



MHTTC

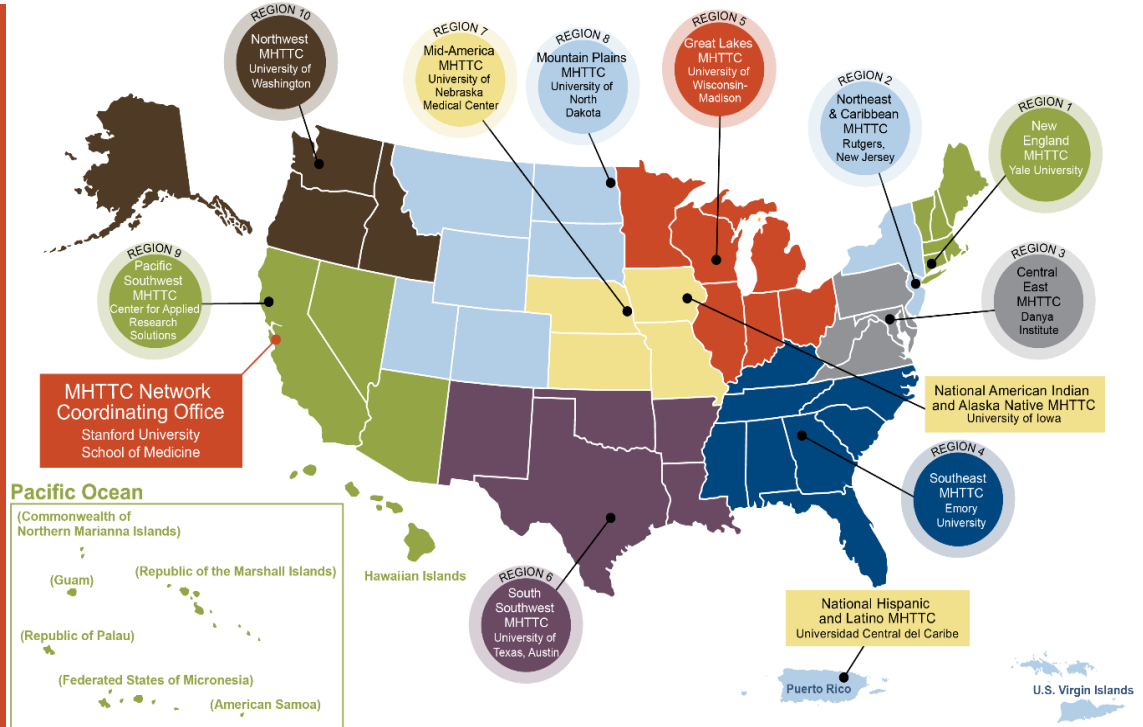
Mental Health Technology Transfer Center Network
Funded by Substance Abuse and Mental Health Services Administration

Reach of the MHTTC Network 2018-2019

The Mental Health Technology Transfer Center (MHTTC) Network's purpose is technology transfer – accelerating adoption and implementation of evidence-based practices for mental health prevention, treatment, and recovery supports.

Established in 2018, the MHTTC Network is comprised of 10 Regional Centers, a National American Indian & Alaska Native Center, a National Hispanic & Latino Center, and a Network Coordinating Office.

We provide training and technical assistance, develop products and resources, and foster regional and national alliances.



201

PRODUCTS & RESOURCES DEVELOPED



495

TRAINING & TECHNICAL ASSISTANCE SERVICES PROVIDED



19,297

PARTICIPANTS REACHED



339

COLLABORATIONS WITH NATIONAL, STATE, AND LOCAL ORGANIZATIONS

AREAS OF FOCUS

Each Center provides training and technical assistance on multiple topics; the Area of Focus is a topic for which Centers have specific expertise, curate specialized webpages, develop national products, and serve as consultants to the Network.

[NEW ENGLAND MHTTC](#) | Recovery-oriented practices, including recovery support services

[NORTHEAST & CARIBBEAN MHTTC](#) | EBPs for serious mental illness (SMI): supported employment, illness management and recovery, supported housing, and supported education

[CENTRAL EAST MHTTC](#) | Suicide prevention in the context of race, ethnicity, age, and sexual orientation

[SOUTHEAST MHTTC](#) | Population-based approaches to managing SMI

[GREAT LAKES MHTTC](#) | Process improvement for the mental health care delivery systems

[SOUTH SOUTHWEST MHTTC](#) | Early childhood mental health

[MID-AMERICA MHTTC](#) | Integration of primary and mental health care

[MOUNTAIN PLAINS MHTTC](#) | Rural mental health

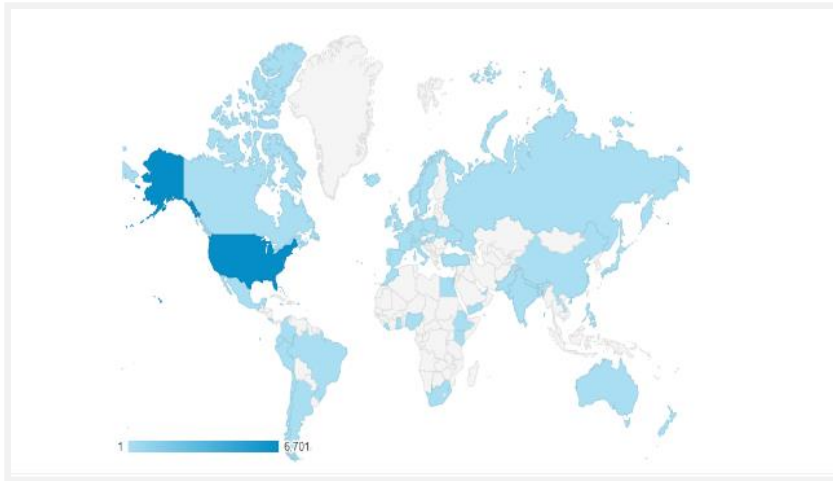
[PACIFIC SOUTHWEST MHTTC](#) | Youth and young adults of transitional age with or at risk for SMI

[NORTHWEST MHTTC](#) | EBPs for psychosis, including CBT for psychosis and assertive community treatment (ACT)

[NATIONAL AMERICAN INDIAN AND ALASKA NATIVE MHTTC](#) | Culturally informed, EBPs in treatment and assessment of mental health disorders in Native populations

[NATIONAL HISPANIC AND LATINO MHTTC](#) | Mental health promotion, prevention, intervention, and recovery support services for Hispanic and Latino populations

WEBSITE ANALYTICS



197,289

VIEWS ON WEBSITE

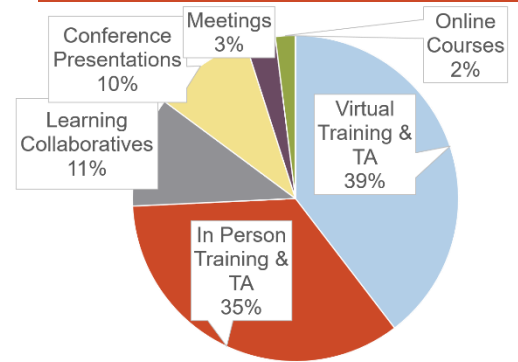
WWW.MHTTCNETWORK.ORG



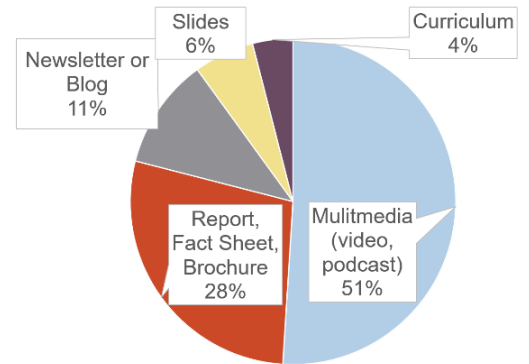
70

COUNTRIES
REPRESENTED IN WEBSITE
USERS

TYPES OF SERVICES



FORMAT OF PRODUCTS



FEEDBACK AND PARTICIPANT DATA

“

“The MHTTC is an incredible resource for finding subject matter experts to help us develop and deliver various training initiatives.”

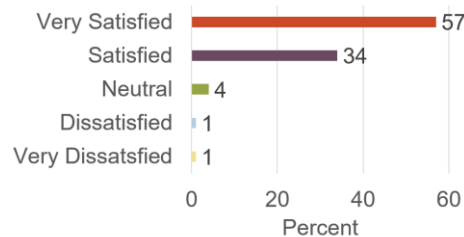
“The depth and breadth of their expertise and access to training resources has been great.”

“The MHTTC staff have a long-term approach and think big picture. You can tell that this group really cares about the process.”

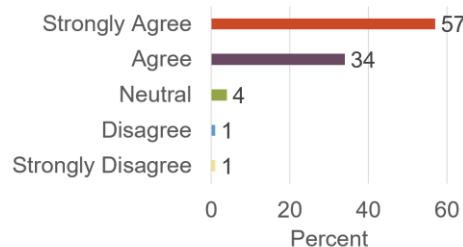
”

— PARTICIPANTS & STAKEHOLDERS

HOW SATISFIED ARE YOU WITH THE QUALITY OF THIS EVENT?



I WOULD RECOMMEND THIS EVENT TO A COLLEAGUE



ONLINE COURSE DEVELOPMENT

HealthKnowledge

In our first year, the MHTTC Network launched 4 courses on the TTCs' online course platform, www.HealthKnowledge.org. All courses are free for certificate of completion or \$5 per continuing education hour.

- Building Capacity of School Personnel to Promote Positive Mental Health in Children and Youth
- Violence Risk Assessment and Management
- The Psychiatrist's Guide to Population Management of Diabetes
- CBT for Psychosis

More courses coming soon!

Questions?

Contact your Regional Center or National Focus Area Center
www.MHTTCnetwork.org – click on 'Your MHTTC'
or contact the MHTTC Network Coordinating Office
networkoffice@mhttcnetwork.org (650) 721-8692

SAMHSA
Substance Abuse and Mental Health
Services Administration