



Northwest (HHS Region 10)

MHTTC

Mental Health Technology Transfer Center Network

Funded by Substance Abuse and Mental Health Services Administration

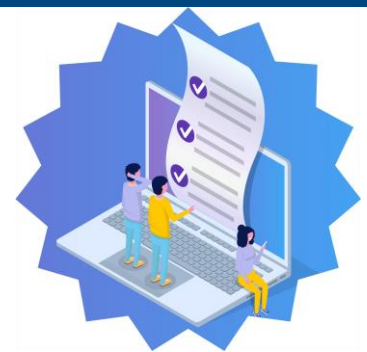
## The Psychiatrist's Guide to Population Management of Diabetes

This 3-hour self-paced eCourse is designed for psychiatric prescribers who treat patients with serious mental illness. The course aims to increase prescriber knowledge of and confidence in identification and management of diabetes and other cardiovascular risk factors. Based on a Population Management approach, this course will provide strategies to:

- Identify care gaps and stratify risks related to diabetes in a population with serious mental illness;
- Address prevention of diabetes through strategies to support health behavior change that are feasible in specialty mental health settings; and
- Describe treatment options for Type 2 diabetes, including goals of diabetes care for patients with serious mental illness.
- 3.0 hours of CME or CNE credits are available for physicians, physician assistants, medical assistants, nurses, nurse practitioners, and clinicians. This activity is provided by the University of Missouri-Kansas City, School of Nursing and Health Studies and Co-Provided by the Substance Abuse and Mental Health Services Administration (SAMHSA). Cost is \$15 for the course (\$5/credit hour).
- Visit <http://bit.ly/ThePsychiatristGuidePopulationManagementDiabetes> to learn more and register.

### Trainers:

- **Lydia Chwastiak MD, MPH**, a psychiatrist and internal medicine physician and professor in the Department of Psychiatry and Behavioral Sciences at the University of Washington School of Medicine. Dr. Chwastiak is also co-director of the Northwest MHTTC.
- **Martha Ward MD**, a psychiatrist and internal medicine physician, and Associate Professor in the Departments of Medicine and Psychiatry and Behavioral Sciences at Emory University School of Medicine.
- **Alyson Myers MD**, a psychiatrist and endocrinologist and Associate Professor at the David and Barbara Zucker School of Medicine. Dr. Myers is also the Medical Director of the Inpatient Diabetes Unit at North Shore University Hospital.



Each self-paced training module of this eCourse includes:

- Real case vignettes
- A 3-item assessment to guide your learning
- Interactive practical exercises with feedback

**SAMHSA**

Substance Abuse and Mental Health  
Services Administration

**UW Medicine**

DEPARTMENT OF PSYCHIATRY  
AND BEHAVIORAL SCIENCES

**UMKC** School of Nursing  
and Health Studies



[mhttcnetwork.org/northwest](http://mhttcnetwork.org/northwest)



[northwest@mhttcnetwork.org](mailto:northwest@mhttcnetwork.org)



[bit.ly/nwmhttcnews](http://bit.ly/nwmhttcnews)



@NorthwestMHTTC



@Northwestmhttc

