



Activity Highlights

Activity	Events	Attendees	Post Received
Trainings	45	1265	834
Technical Assistance	41	2608	1729
Meetings	7	73	33
Exhibiting	15	13	
Conferences	1		
Online Courses			57
Totals	109	4077	2653

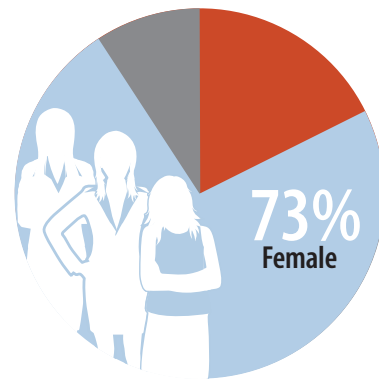
Summary of GPRA Evaluation Data* (n=2,600)



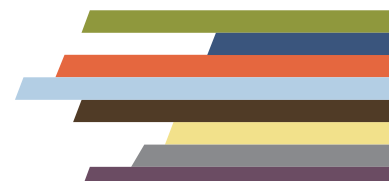
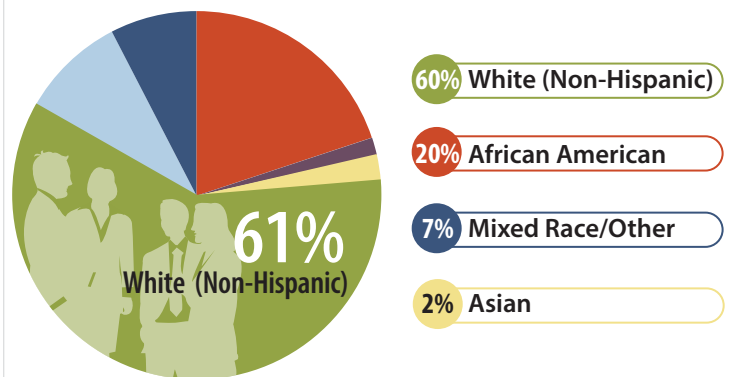
- Were very satisfied or satisfied with overall quality of the event. **92**
- Strongly agreed or agreed that this event would benefit their professional. **89**
- Strongly agreed or agreed that they will use the information gained. **80**
- Would recommend this event to a colleague. **92**

*Events using the new GPRA. 5 events occurred in FY20 that used the old GPRA and were not included. Includes all events types.

Central East MHTTC Reach FY20: Gender of Event Registrants (n=4,935)



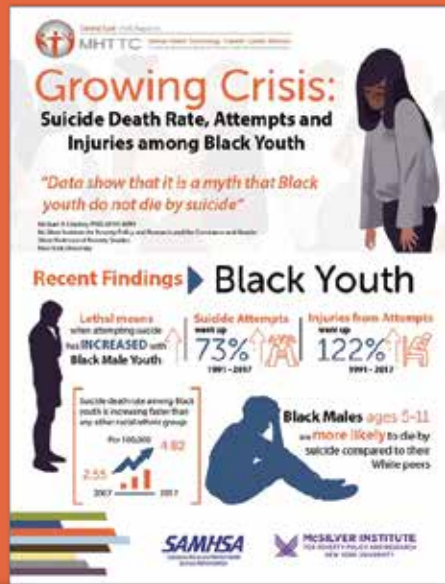
Central East MHTTC Reach FY20: Race/Ethnicity of Event Participants (n=2,653)





Produced:

- “Tip Sheet: Teletherapy for Individual Services”
- “COVID-19 Effect on Child Mental Health”
- “Growing Crisis: Suicide Death Rate, Attempts and Injuries among Black Youth”



Additional FY20 Activities:

Created “Addressing Behavioral Health Inequities” Parts 1 & 2, resources on Population Health Management and Value-Based Reimbursement as they align with mental health.

