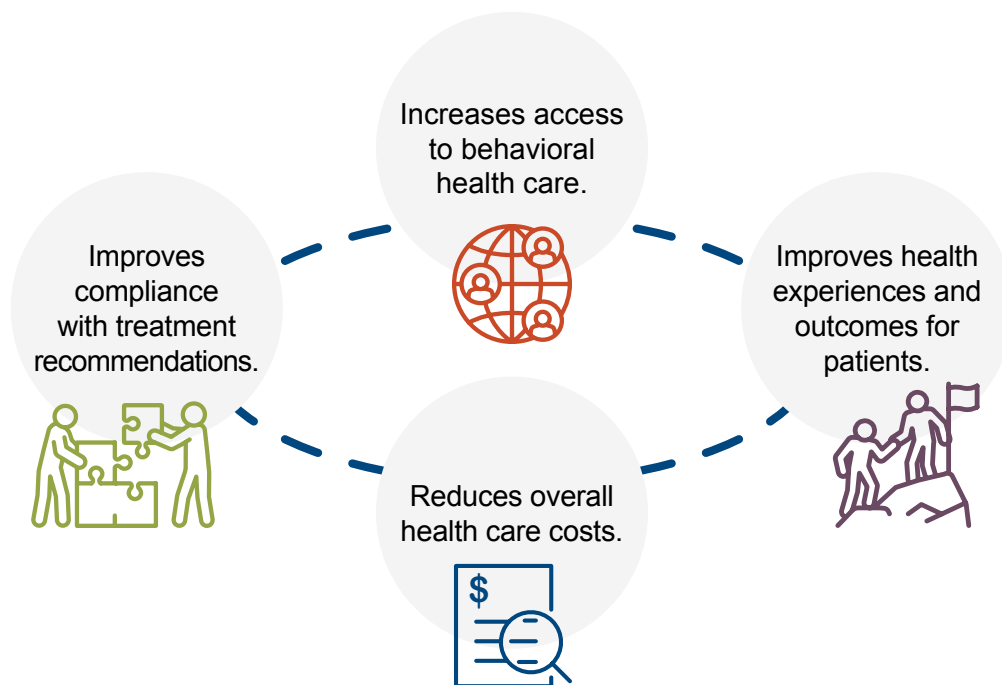


# Why integrated care?

## At a Glance

Integrated care includes many advantages, including increasing access to care for rural and underserved communities, improving health outcomes, and reducing costs for patients and providers.



When a behavioral health concern arises in a primary care visit, the time it takes to address the concern nearly triples. This creates a domino effect impacting patient cost, physician reimbursement, and outcomes. Learn more on the back of this handout.



Mid-America (HHS Region 7)

**MHTTC**

Mental Health Technology Transfer Center Network  
Funded by Substance Abuse and Mental Health Services Administration



**MUNROE-MEYER  
INSTITUTE**

# Patient Commitment

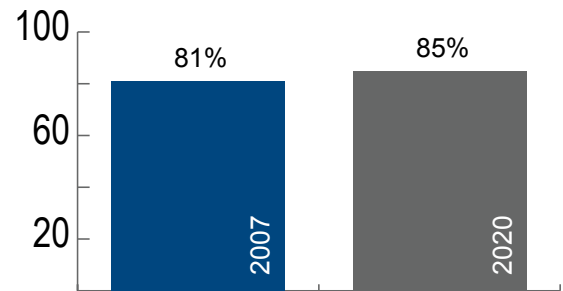
## Pre-Integration<sup>1,2</sup>:

30 to 50 percent of behavioral health referrals from a primary care clinic don't make it to their first appointment if the behavioral health provider is located off-site

However, when referred to an on-site appointment, show rates substantially improve.

## Post-Integration:

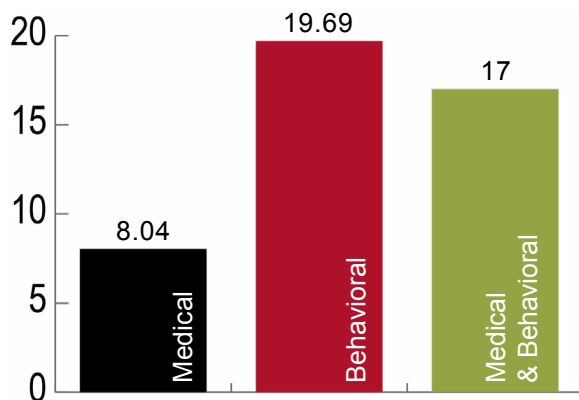
Show Rates from PCP Referrals



Percentage of patients who attended first appointment

# Time is Money

Physician Time Spent in Minutes<sup>3</sup>



Average time spent

## Physician Satisfaction<sup>4</sup>

Physicians who have adopted an integrated model of care report **strong agreement** that the model helps improve:

- **Quality and continuity of care** for their patients
- **Time** that allows them to focus on treating medical issues
- **Confidence** with identification/management of problems

Physician Reimbursement Per Minute:

**\$4.34**

Visits only pertaining to behavioral health reasons

**\$7.35**

Visits pertaining to both medical and BH reasons

**\$18.12**

Visits pertaining to only medical reasons

<sup>1</sup>Valleley, R.J., Kosse, S., Schemm, A., Foster, N., Evans, J., & Polaha, J. (2007). Integrated Care for Children in Rural Communities: An Examination of Patient Attendance to Behavioral Health Services. *Families, Systems, & Health*, 25, 323-332.

<sup>2</sup>Valleley, Meadows, Burt, Menousek, Hembree, Evans, Gathje, Kupzyk, Sevecke, Lancaster (2020). Demonstrating the impact of collocated behavioral health in pediatric primary care. *Clinical Practice in Pediatric Psychology*, 8(1), 13-24.

<sup>3</sup>Valleley, Polaha, Begeny & Evans (2006). Running out of time: Physician management of behavioral health concerns in rural pediatric primary care. *Pediatrics Electronic Pages*, 118, e132-e138.

<sup>4</sup>Lieske, Valleley, and Evans (2009)

Contact us at [midamerica@mhttcnetwork.org](mailto:midamerica@mhttcnetwork.org) for training and technical assistance.

## Handout Authors

Holly Roberts, PhD, LP  
Faculty Trainer  
Mid-America MHTTC

Rachel Valleley, PhD, LP  
Integrated Care Program Director  
Mid-America MHTTC

Joe Evans, PhD  
Project Consultant  
Mid-America MHTTC

Brandy Clarke, PhD, LP  
Project Director  
Mid-America MHTTC