

WELCOME!



# Evidence-Based Resource Guide Series

**Expanding Access to  
and Use of Behavioral  
Health Services for  
People Experiencing  
Homelessness**



BOLD  
THINKERS  
DRIVING  
REAL-WORLD  
IMPACT



MHTTC

**SAMHSA**  
Substance Abuse and Mental Health  
Services Administration

# Housekeeping Items

- We have made every attempt to make today's presentation secure. If we need to end the presentation unexpectedly, we will follow-up using your registration information.
- If you need tech help, please enter "tech help" into the chat.
- At the end of today's webinar, please complete a **brief** survey.
- Following the session, you will receive an email on how to access a certificate of attendance; must attend at least 30 minutes.
- This event is closed captioned!



- Follow us on social media:

@MHTTCNetwork



## **Please Note:**

**This session is recorded and all materials will be posted to our website within 2 weeks.**

# Disclaimer

This presentation was prepared for the MHTTC Network under a cooperative agreement from the Substance Abuse and Mental Health Services Administration (SAMHSA). All material appearing in this presentation, except that taken directly from copyrighted sources, is in the public domain and may be reproduced or copied without permission from SAMHSA or the authors. Citation of the source is appreciated. Do not reproduce or distribute this presentation for a fee without specific, written authorization from the MHTTC Network Coordinating Office. This presentation will be recorded and posted on our website.

At the time of this presentation, Dr. Miriam E. Delphin-Rittmon served as Assistant Secretary for Mental Health and Substance Use in the U.S. Department of Health and Human Services (DHHS) and the Administrator of SAMHSA. The opinions expressed herein are the views of the speakers, and do not reflect the official position of DHHS or SAMHSA. No official support or endorsement of DHHS, SAMHSA, for the opinions described in this presentation is intended or should be inferred.

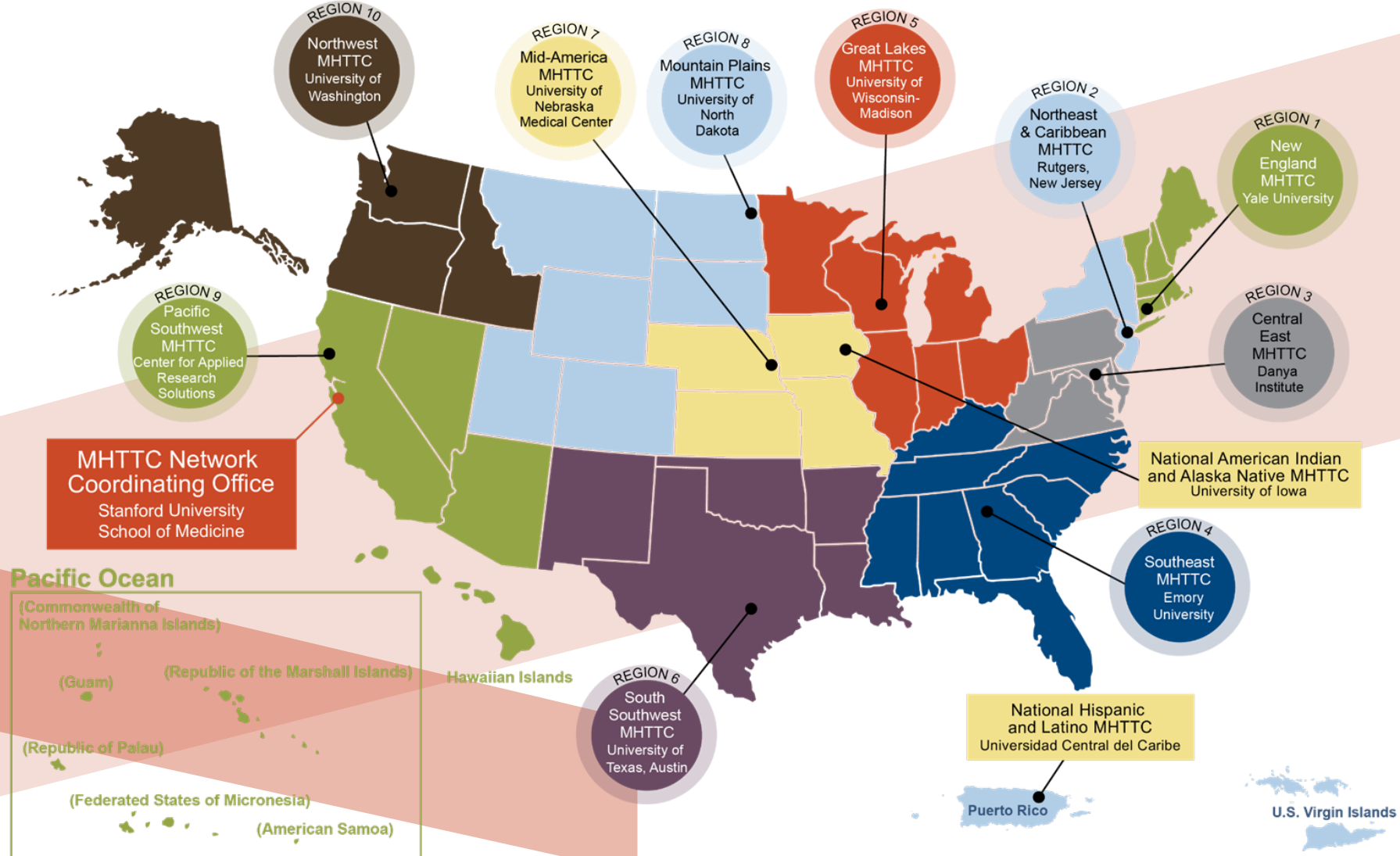
# Connect with Your MHTTC at [www.mhttcnetwork.org](http://www.mhttcnetwork.org)



**MHTTC**

Mental Health Technology Transfer Center Network  
Funded by Substance Abuse and Mental Health Services Administration

**MHTTC Network**



**The MHTTC Network uses affirming, respectful and recovery-oriented language in all activities. That language is:**

**STRENGTHS-BASED AND HOPEFUL**

**INCLUSIVE AND ACCEPTING OF DIVERSE CULTURES, GENDERS, PERSPECTIVES, AND EXPERIENCES**

**HEALING-CENTERED AND TRAUMA-RESPONSIVE**

**INVITING TO INDIVIDUALS PARTICIPATING IN THEIR OWN JOURNEYS**

**PERSON-FIRST AND FREE OF LABELS**

**NON-JUDGMENTAL AND AVOIDING ASSUMPTIONS**

**RESPECTFUL, CLEAR AND UNDERSTANDABLE**

**CONSISTENT WITH OUR ACTIONS, POLICIES, AND PRODUCTS**

# National Mental Health and Substance Use Policy Laboratory

## Expanding Access to and Use of Behavioral Health Services for People Experiencing Homelessness

February 2, 2023

# Welcome



**Dr. Joseph Bullock**  
Senior Public Health Advisor  
SAMHSA

EVIDENCE-BASED RESOURCE GUIDE SERIES

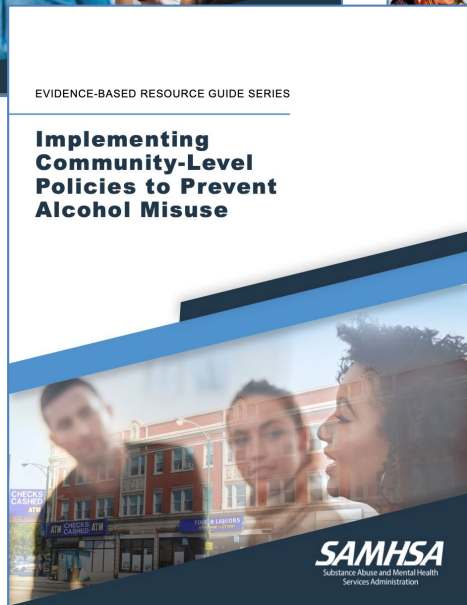
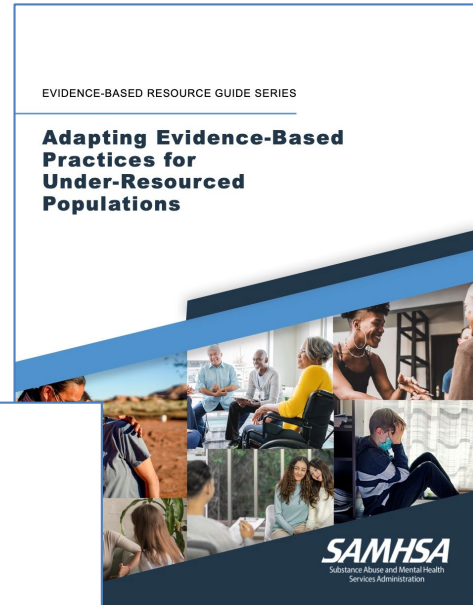
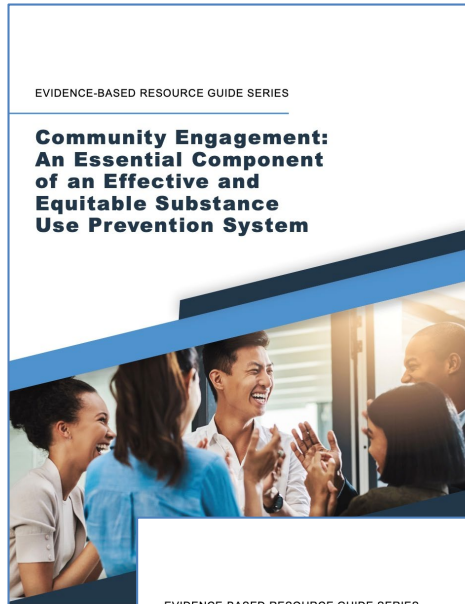
## **Expanding Access to and Use of Behavioral Health Services for People Experiencing Homelessness**



**SAMHSA**  
Substance Abuse and Mental Health  
Services Administration

**SAMHSA**  
Substance Abuse and Mental Health  
Services Administration

# Evidence-Based Resource Center Guides



SAMHSA’s vision for the guides – and the underlying foundation – is to:

- Reflect scientific rigor and make recommendations from the evidence base.
- Provide expert consensus.
- Be comprehensive and modular for use by practitioners, administrators, and other stakeholders.
- Be accessible to the field.



# Overview of the Issue

**Governor Hochul Announces \$38.2 Million Initiative to Address Street Homelessness**

Hawaii's Governor Vowed To Cut Homelessness  
Go Along?

**City begins meetings to address housing, homelessness and mental health in Tulsa**

Portland

mayor suggests easing process

**California's Homelessness Crisis**

involuntarily commit people with mental health struggles

**Gov. Kotek's Priorities: Homelessness, mental health, public schools**

**Texas homeless groups increasingly provide mental health care**

**Will San Antonio strategy to hospitalize more homeless people struggling with mental illness?**

A mother's quest to save her homeless son from mental illness is met with a system in crisis

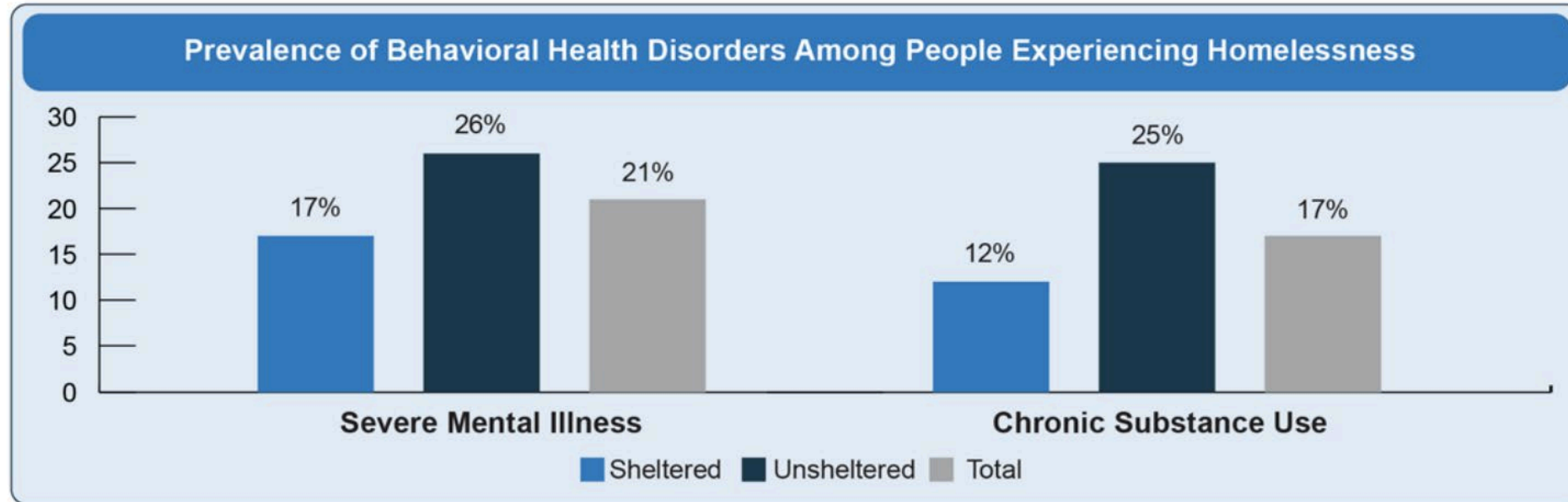
'Gimme Shelter': Will Newsom's new mental health plan reduce homelessness?

**What we keep getting wrong about homelessness and mental illness in the US**

State Funding to Establish Eight Teams of Behavioral Health Professionals to Address the Immediate Needs of Unhoused New Yorkers

# Overview of the Issue

- Over 20 percent of people experiencing homelessness have a serious mental illness
- 17 – 33 percent have received treatment for substance use



Source:

U.S. Department of Housing and Urban Development. (2020). *CoC Homeless Assistance Programs, Homeless Populations and Subpopulation Data*.

- Wait times for placement into housing can be lengthy
- Longer periods of homelessness are associated with lower rates of recovery and higher rates of psychiatric distress.

# Overview of the Guide

## Purpose of the Guide

- To provide information and implementation guidance on five programs and practices that may be useful in working with individuals experiencing homelessness prior to housing placement.
- To provide resources related to evaluation.

## Structure

- Issue Brief
- What Research Tells Us
- Guidance for Selecting and Implementing Evidence-Based Interventions
- Examples of Organizations Implementing Evidence-Based Interventions
- Resources for Evaluation

Developed in collaboration with national experts

Systematic review of the evidence

Features case examples

# The Role of Expert Input



**Richard Cho, PhD**

Senior Advisor

Housing and Services in the Office of the  
Secretary

U.S. Department of Housing and Urban  
Development

*Technical Expert Panel Member*

# The Role of Expert Input



**Melissa Canaday, MEd**  
Director  
Focused Outreach Richmond



**Marcella Maguire, PhD**  
Director, Health Systems Integration  
at Corporation for Supportive Housing



**Avik Chatterjee, MD, MPH**  
Assistant Professor  
Boston University



**Courtney Pladsen, DNP, FNP-BC, RN**  
Clinical Director, National Healthcare  
for the Homeless Council



**Richard Cho, PhD**  
Senior Advisor, Dept. of Housing  
and Urban Development



**Christy Respress, MSW**  
Executive Director, Pathways to  
Housing DC



**Erika Jones-Haskin, MSW**  
Policy Director, U.S. Interagency  
Council on Homelessness



**Emily Rosenoff, MPA**  
Director, Division of Long-Term  
Services and Supports, ASPE



**Margot Kushel, MD**  
Professor and Division Chief,  
UCSF Department of Medicine



**Bryan Samuels, MPP**  
Executive Director, Chapin Hall  
at the University of Chicago

# Evidence-Based Approaches to Behavioral Health Services

Reviewed systematic reviews of peer-reviewed literature on populations experiencing homelessness and behavioral health topics (e.g., substance use, mental illness, co-occurring, harm reduction)

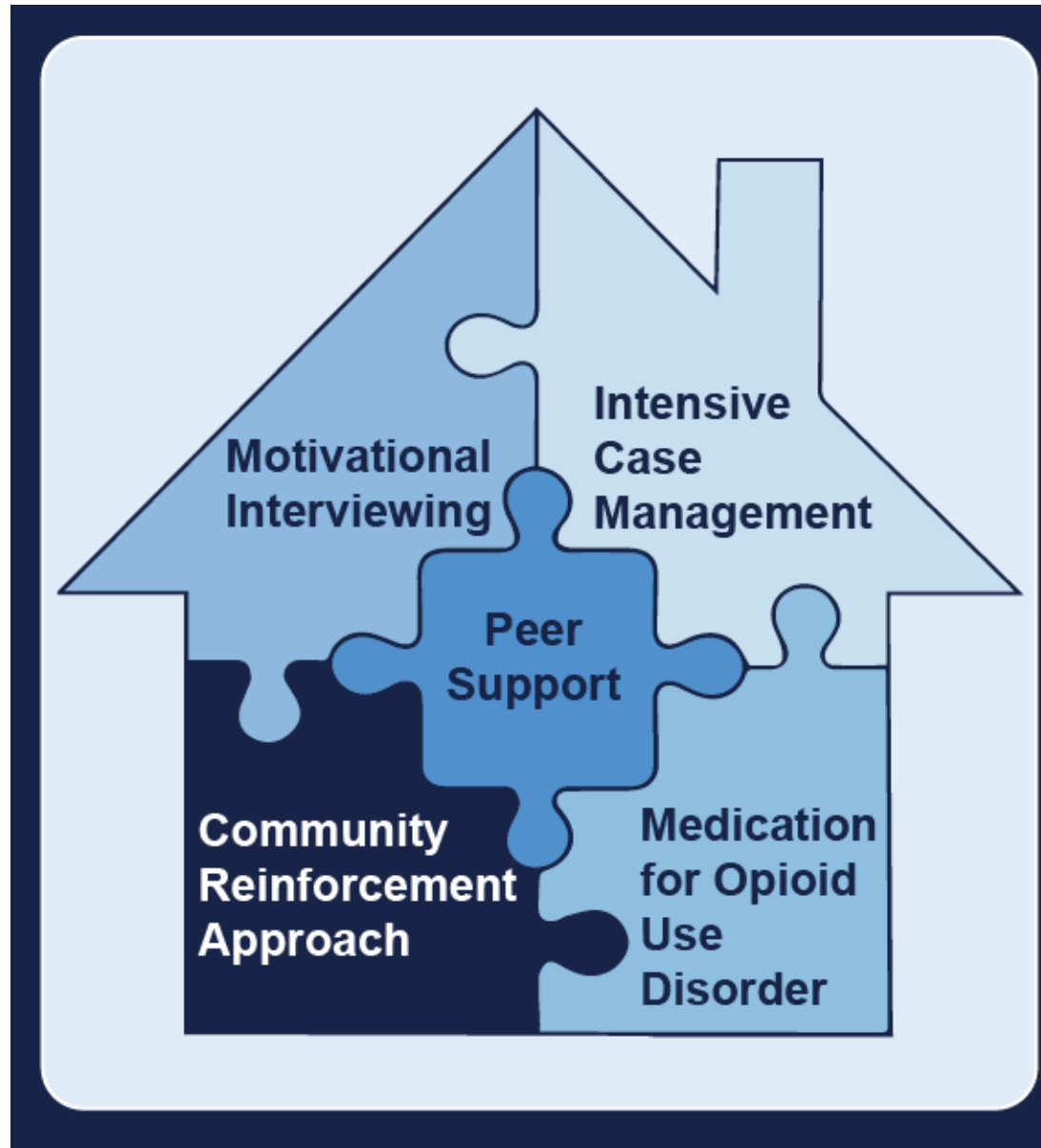
Identified potential interventions and discussed with SAMHSA, subject matter experts, and TEP

Identified five behavioral health interventions/approaches for inclusion

Screened abstracts for each intervention/approach (1,057 total)

Extracted information and synthesized findings

# Evidence-Based Approaches to Behavioral Health Services



# Implementation Examples





# Colorado Coalition for the Homeless



**Kevin Raleigh**

Program Manager

Colorado Coalition for the Homeless

[kraleigh@coloradocoalition.org](mailto:kraleigh@coloradocoalition.org)



# Resources for Human Development

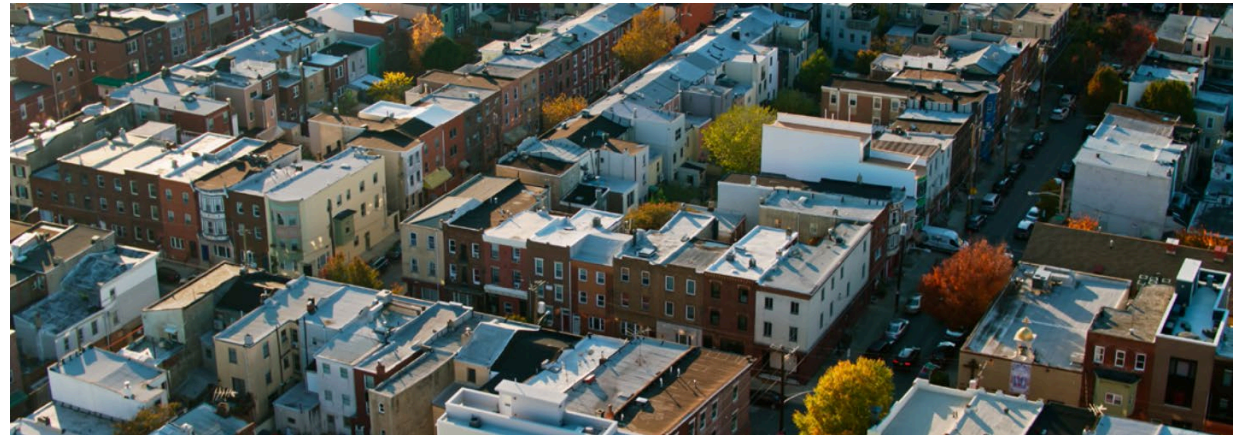


**Ann Ryan**

Program Director, “FaSST/Connections”  
Resources for Human Development

[AnnR@RHD.org](mailto:AnnR@RHD.org)

**In collaboration with the City of Philadelphia  
Department of Behavioral Health and Intellectual  
disAbilities, Housing and Homeless Services**



# Park Center



**Ashley Blum**

Director of Philanthropy

(Former) Director of Homeless Outreach Services

Park Center

[Ashley.Blum@parkcenternashville.org](mailto:Ashley.Blum@parkcenternashville.org)



# Horizon Behavioral Health



**Jennifer Smith Ramey**

Program Manager

Substance Use/Co-Occurring Program

Horizon Behavioral Health

[Jennifer.Smith.Ramey@horizonbh.org](mailto:Jennifer.Smith.Ramey@horizonbh.org)



# Guidance for Selecting and Implementing Interventions

## Implementation considerations and strategies

- For organizations
- For clinicians and other staff members

## Implementation resources

- MOUD, MI, Intensive case management, Peer support, CRA
- Behavioral health and homelessness

## Sample Key Resources

- The **Homeless and Housing Resource Center (HHRC)**  
<https://hhrctraining.org/>
- **SAMHSA's Advisory, [Behavioral Health Services for People Who Are Homeless](#)**
- **National Health Care for the Homeless [outreach resources](#)**
- **National Clearinghouse on Homeless Youth & Families** issue brief on [Runaway and Homeless Youth, Mental Health, and Trauma-Informed Care](#)

# Resources for Evaluation



**FORMATIVE EVALUATIONS**



**FIDELITY EVALUATIONS**



**PROCESS EVALUATIONS**



**OUTCOME EVALUATIONS**



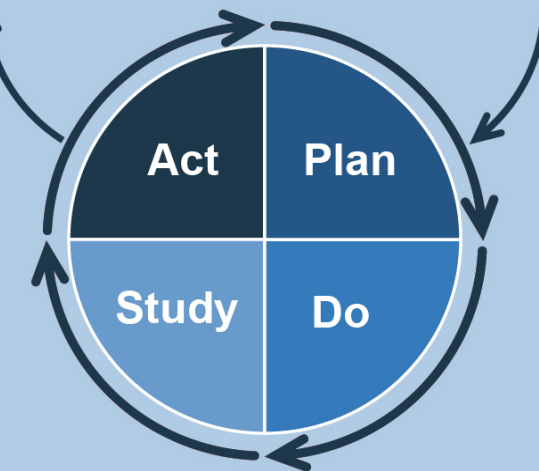
**IMPACT EVALUATIONS**

## CONTINUOUS QUALITY IMPROVEMENT Model for Improvement

What are we trying to accomplish?

How will we know that a change is an improvement?

What change can we make that will result in improvement?



# Conclusions



The guide is now available on the SAMHSA Store:

<https://www.samhsa.gov/resource/ebp/expanding-access-behavioral-health-services-people-experiencing-homelessness>

For more information, contact [ebprc@samhsa.hhs.gov](mailto:ebprc@samhsa.hhs.gov)

# Next Steps

The MHTTC Network is funded through SAMHSA to provide this training. As part of receiving this funding we are required to submit data related to the quality of this event.

Please take a moment to complete a **brief** survey about today's training.

**Survey:** <https://ttc-gpra.org/P?s=661658>

## **Within a week:**

- The recording of today's session will be available on [mhttcnetwork.org](http://mhttcnetwork.org).
- Attendees will receive a follow-up email with instructions for downloading a certificate of completion.







THANK  
YOU