



Mid-America (HHS Region 7)

MHTTC

Mental Health Technology Transfer Center Network

Funded by Substance Abuse and Mental Health Services Administration

# A Permanent Supportive Housing Webinar Series

## Session 1

# “The Dynamics of Homelessness and U.S. Policy Responses”

Dr. Dennis Culhane  
Dana and Andrew Stone Professor of Social Policy  
University of Pennsylvania

**SAMHSA**  
Substance Abuse and Mental Health  
Services Administration

# Disclaimer

*This resource was prepared for the Mid-America Mental Health Technology Transfer Center (MHTTC) under a cooperative agreement from the Substance Abuse and Mental Health Services Administration (SAMHSA). All information appearing in this resource, except that taken directly from copyrighted sources, is in the public domain and may be referenced and shared without permission from SAMHSA or the authors. Citation of the source is appreciated. Do not reproduce or distribute this resource without specific, written authorization from the Mid-America MHTTC. For more information contact [midamerica@mhttcnetwork.org](mailto:midamerica@mhttcnetwork.org)*

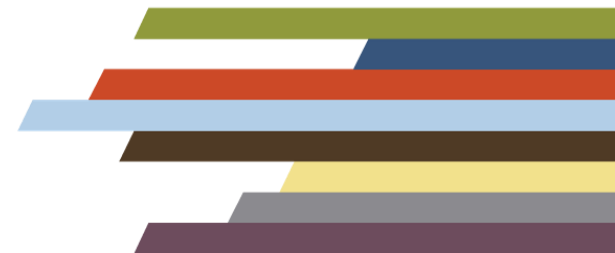
*The opinions expressed herein are the view of **Dr. Dennis Culhane** – and do not reflect the official position of the Department of Health and Human Services (DHHS), SAMHSA. No official support or endorsement of DHHS, SAMHSA, for the opinions described in this resource is intended or should be inferred. Additionally, **Dr. Culhane** have no financial, personal, or professional conflicts of interest in this training.*



Mid-America (HHS Region 7)

MHTTC

Mental Health Technology Transfer Center Network  
Funded by Substance Abuse and Mental Health Services Administration



The MHTTC Network uses affirming, respectful and recovery-oriented language in all activities. That language is:

STRENGTHS-BASED  
AND HOPEFUL

INCLUSIVE AND  
ACCEPTING OF  
DIVERSE CULTURES,  
GENDERS,  
PERSPECTIVES,  
AND EXPERIENCES

HEALING-CENTERED/  
TRAUMA-RESPONSIVE

INVITING TO INDIVIDUALS  
PARTICIPATING IN THEIR  
OWN JOURNEYS

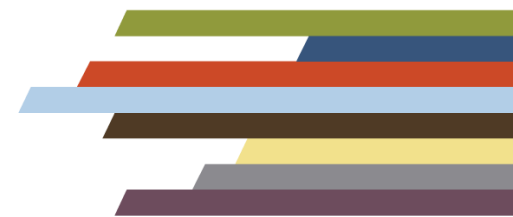
PERSON-FIRST AND  
FREE OF LABELS

NON-JUDGMENTAL AND  
AVOIDING ASSUMPTIONS

RESPECTFUL, CLEAR  
AND UNDERSTANDABLE

CONSISTENT WITH  
OUR ACTIONS,  
POLICIES, AND PRODUCTS

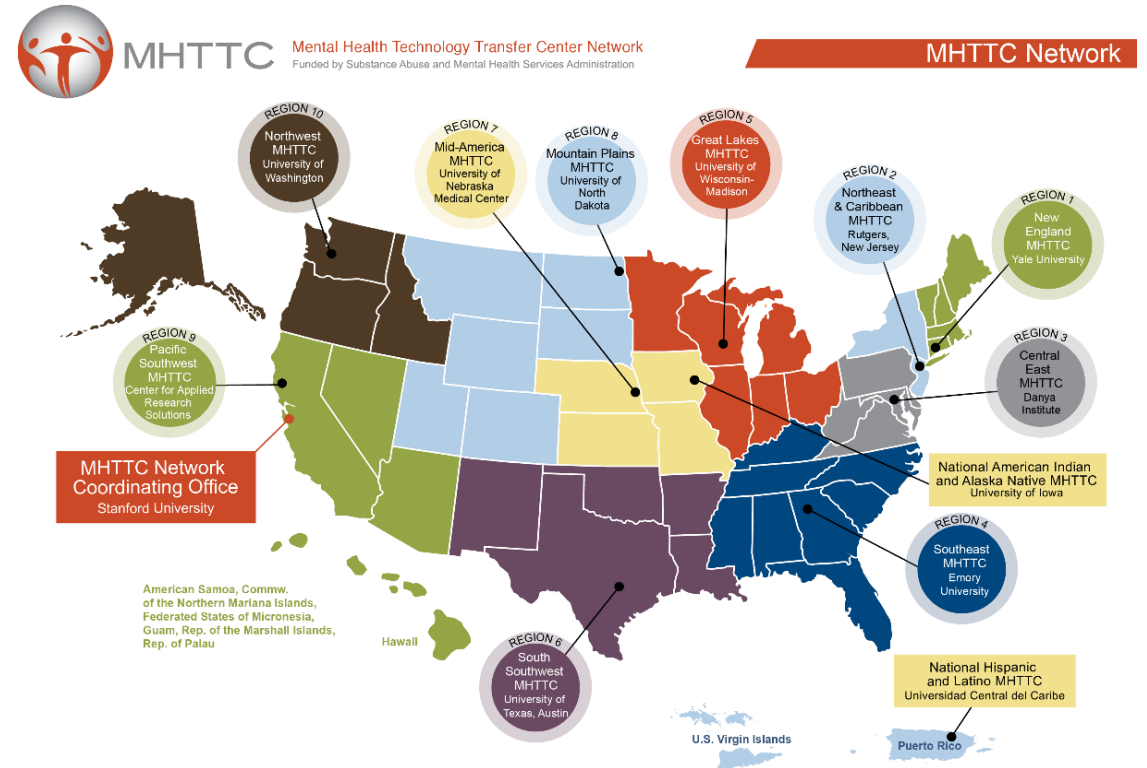
Adapted from: [https://mhcc.org.au/wp-content/uploads/2019/08/Recovery-Oriented-Language-Guide\\_2019ed\\_v1\\_20190809-Web.pdf](https://mhcc.org.au/wp-content/uploads/2019/08/Recovery-Oriented-Language-Guide_2019ed_v1_20190809-Web.pdf)



# Mid-America Mental Health Technology Transfer Center

Established to increase utilization of evidence-based mental health practices.

- Missouri, Iowa, Nebraska, and Kansas.
- Free training and technical assistance.
- SAMHSA grant awarded to the Behavioral Health Education Center of Nebraska at University of Nebraska Medical Center. (5 years, \$3.7 million, grant number: H79SM081769)



Mid-America (HHS Region 7)

MHTTC

Mental Health Technology Transfer Center Network  
Funded by Substance Abuse and Mental Health Services Administration



Mid-America (HHS Region 7)

MHTTC

Mental Health Technology Transfer Center Network

Funded by Substance Abuse and Mental Health Services Administration

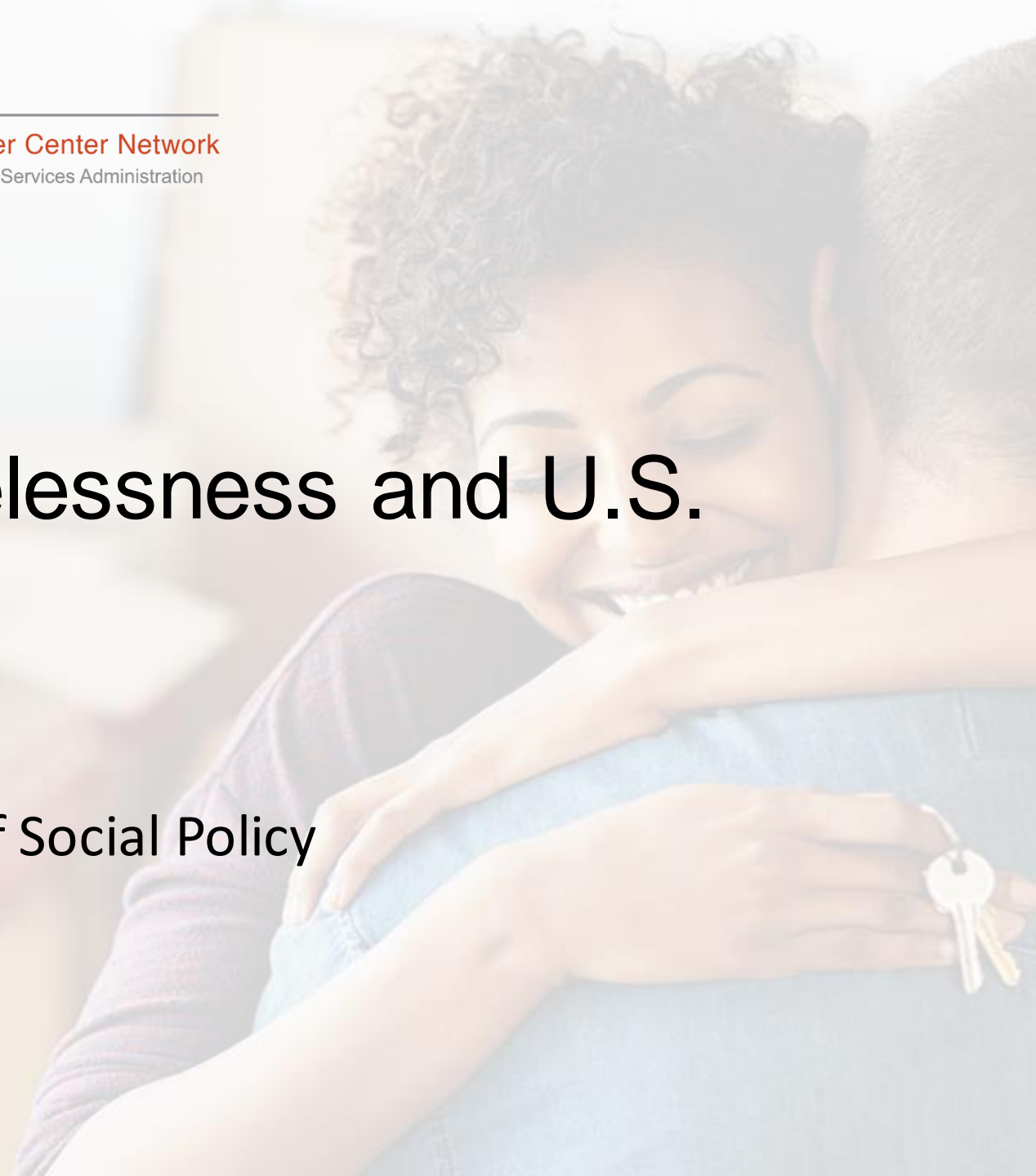
# The Dynamics of Homelessness and U.S. Policy Responses

Dr. Culhane

Dana and Andrew Stone Professor of Social Policy

University of Pennsylvania

**SAMHSA**  
Substance Abuse and Mental Health  
Services Administration

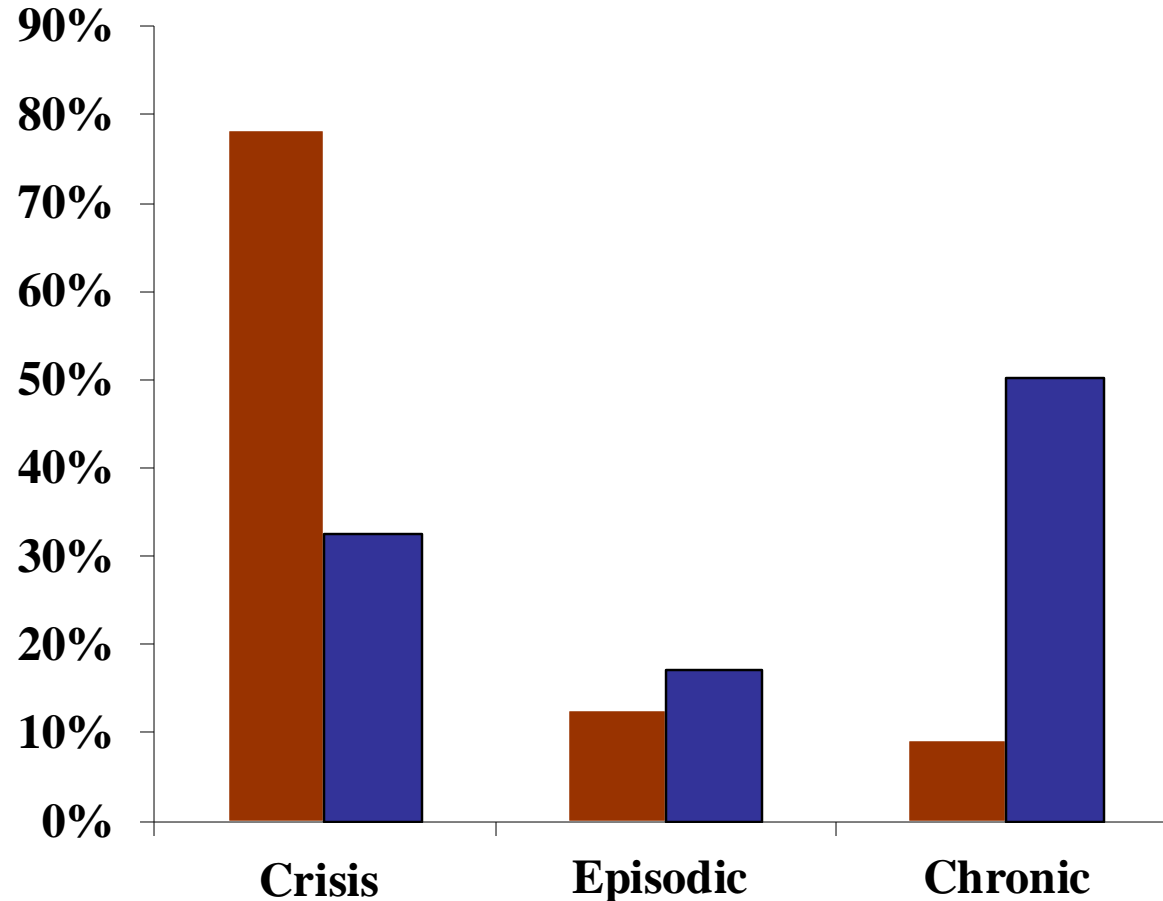


# **The Dynamics of Homelessness in the United States and Related Policy Interventions**

Dennis P. Culhane  
University of Pennsylvania

---

# Cluster Distributions: Persons and Shelter Days (Single Adults in Philadelphia)

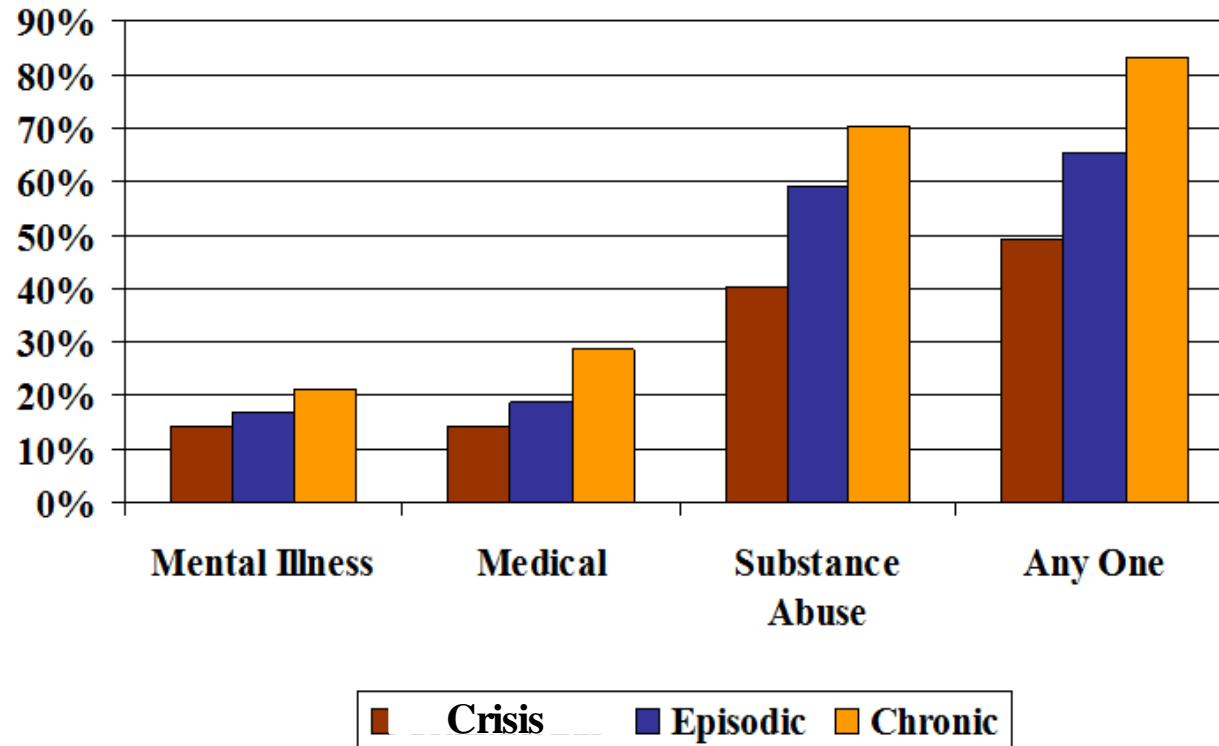


- Crisis:
  - 1.19 stays
  - 20.4 days
- Episodic:
  - 3.84 stays
  - 72.8 days
- Chronic:
  - 1.53 stays
  - 252.4 days

■ % of Persons ■ % Days Used

# Characteristics by Cluster: Dated Data (Philadelphia)

Nearly all chronically homeless people have a disability:





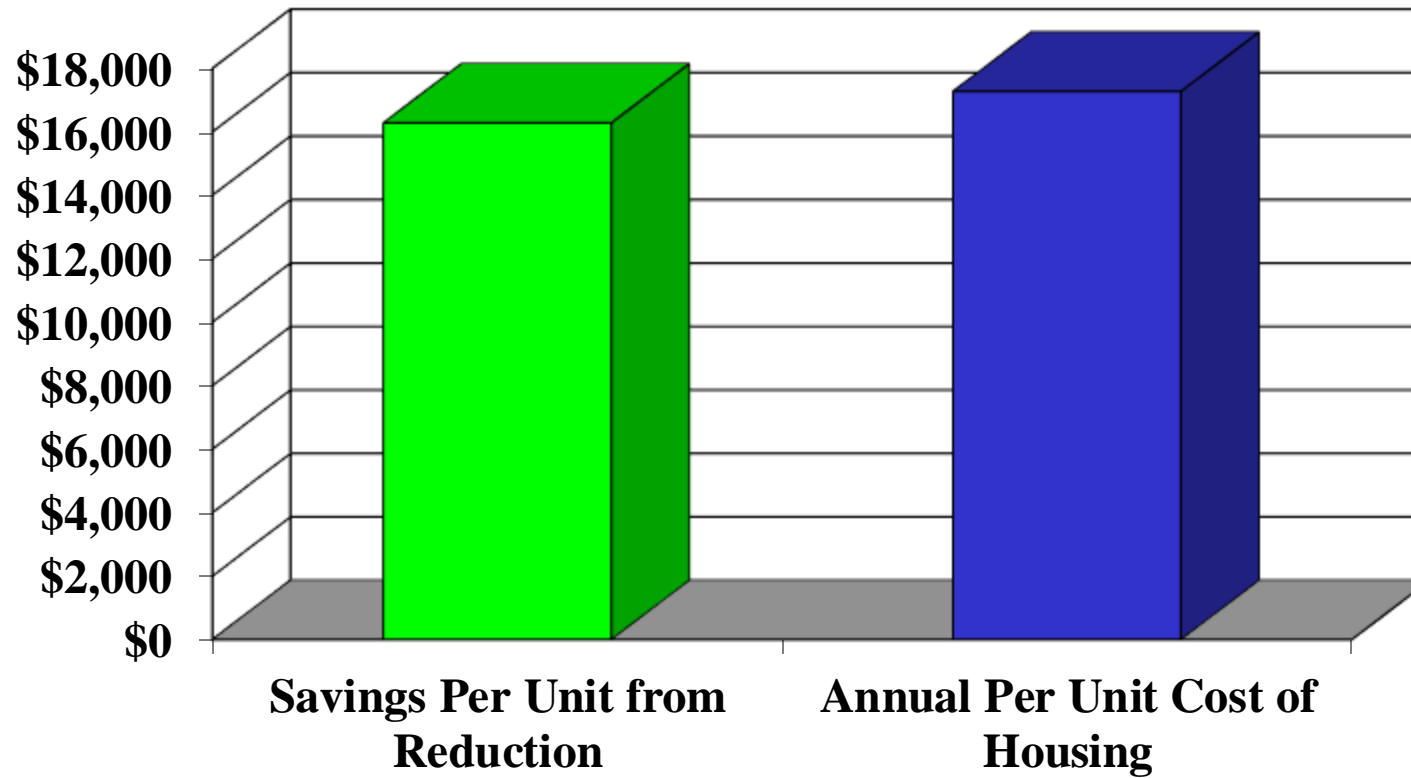
# The Cost of Chronic Homelessness: NY/NY

Service Provider	Mean Days Used (2-year pre-NY/NY)	Per Diem Cost	Annualized Cost
NYC DHS – Shelter	137	\$68	\$4,658
NYS OMH – Hospital	57.3	\$437	\$12,520
NYC HHC – Hospital	16.5	\$755	\$6,229
Medicaid – Hospital	35.3	\$657	\$11,596
Medicaid – Outpatient	62.2 (visits)	\$84	\$2,612
VA – Hospital	7.8	\$467	\$1,821
NYS DCJS – Prison	9.3	\$79	\$367
NYC DOC – Jail	10	\$129	\$645
Total			\$40,449

# NY/NY Savings: Per Housing Unit Per Year

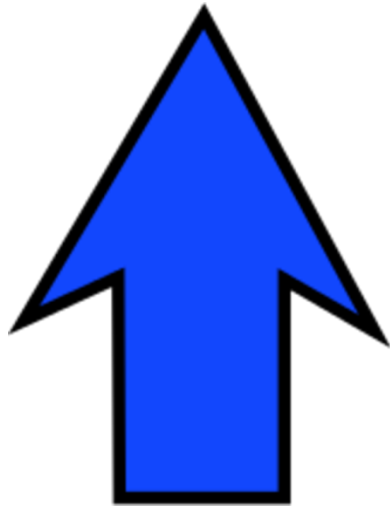
Service	Annualized Savings per NY/NY Unit
DHS Shelter	\$3,779
OMH Hospital	\$8,260
HHC Hospital	\$1,771
Medicaid – Inpatient	\$3,787
Medicaid - Outpatient	(\$2,657)
VA Hospital	\$595
NYS Prison	\$418
NYC Jail	\$328
<b>Total</b>	<b>\$16,282</b>

# NY/NY Housing - Costs and Savings

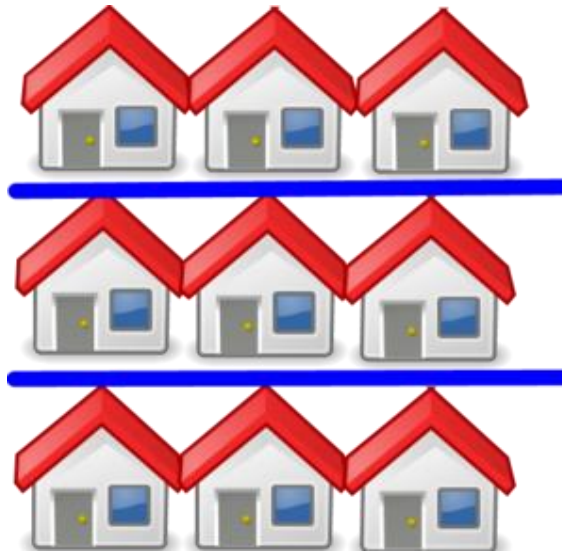


■ Savings Per Unit from Reduction    ■ Annual Per Unit Cost of Housing

# Bush Administration Chronic Homelessness Initiative Resulted In....



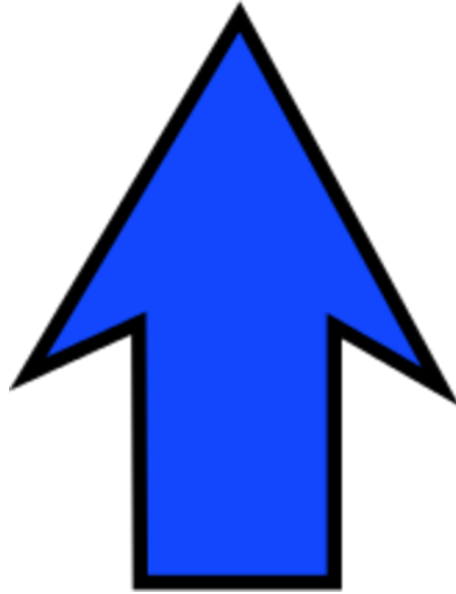
\$500 M Increase  
Annually by 2008



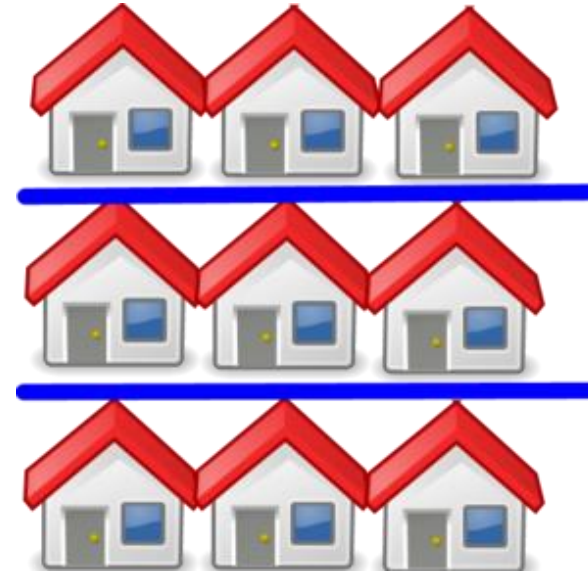
Approx. 50,000-60,000  
Housing Placements

---

# Obama Administration Initiative: *Ending Veteran Homelessness*



\$1.2 Billion  
Increase in Annual  
Funds by 2016

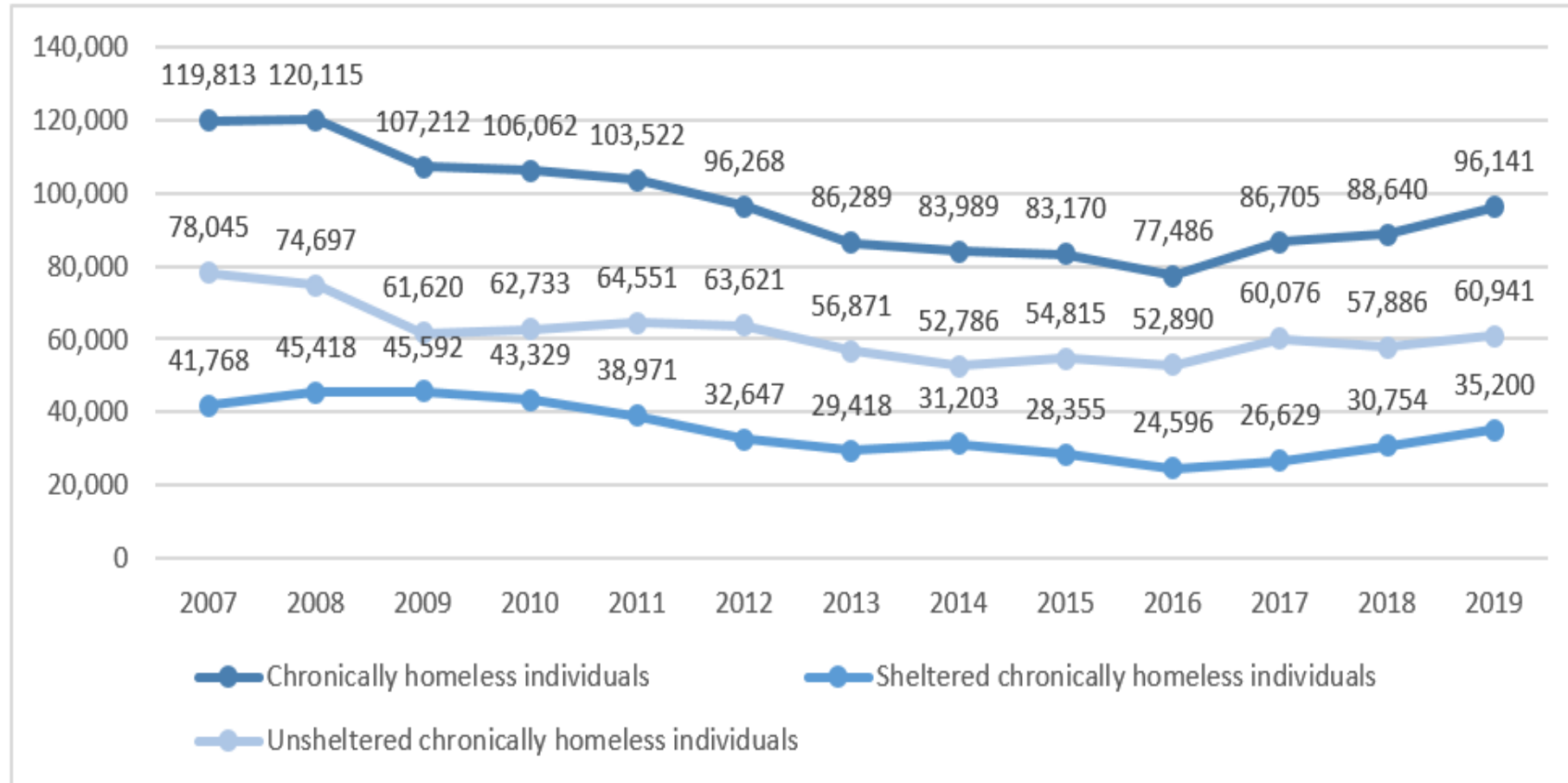


90,000 Permanent  
Supportive Housing  
Units

---

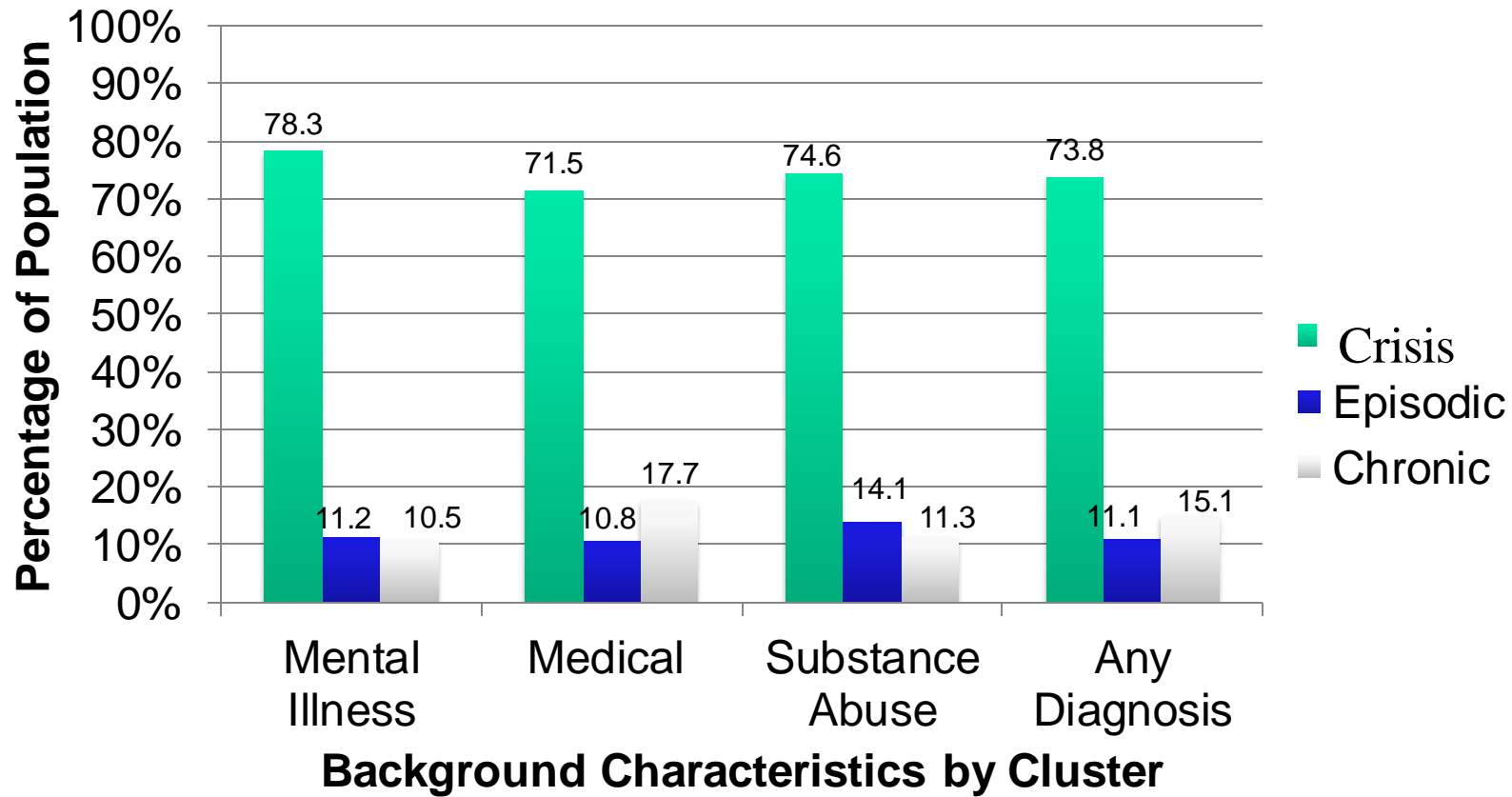
## 6.1 Estimates of Chronic Homelessness in the United States, 2019

Exhibit 6-1: PIT Estimates of Chronically Homeless Individuals by Sheltered Status, 2007-2019



# Clusters by Characteristics

Most homeless people with a disability experience *Crisis* Homeless

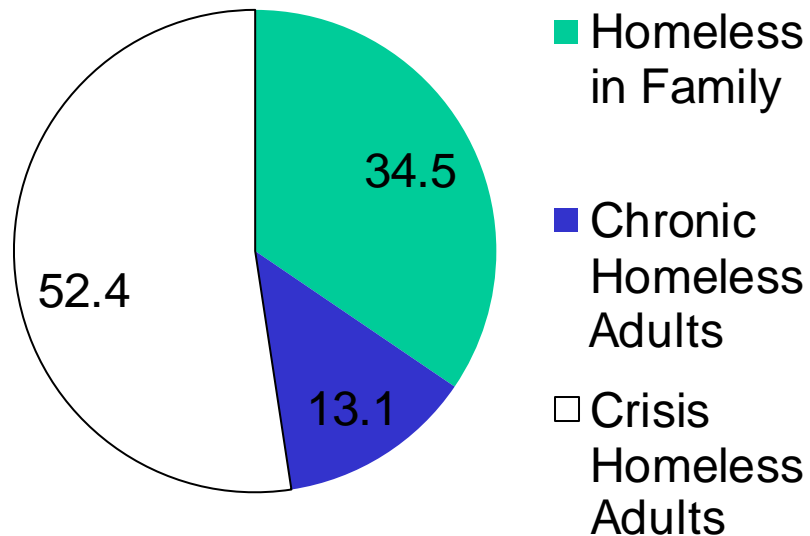


# Crisis Homelessness in the US in 2014:

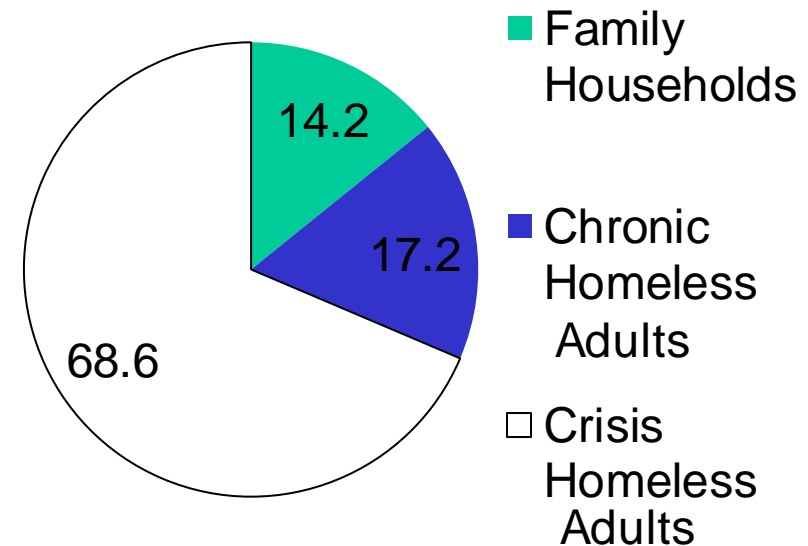
**Scope: PIT: 278,713**

**Annual: 754,400**

Annual Number of Persons

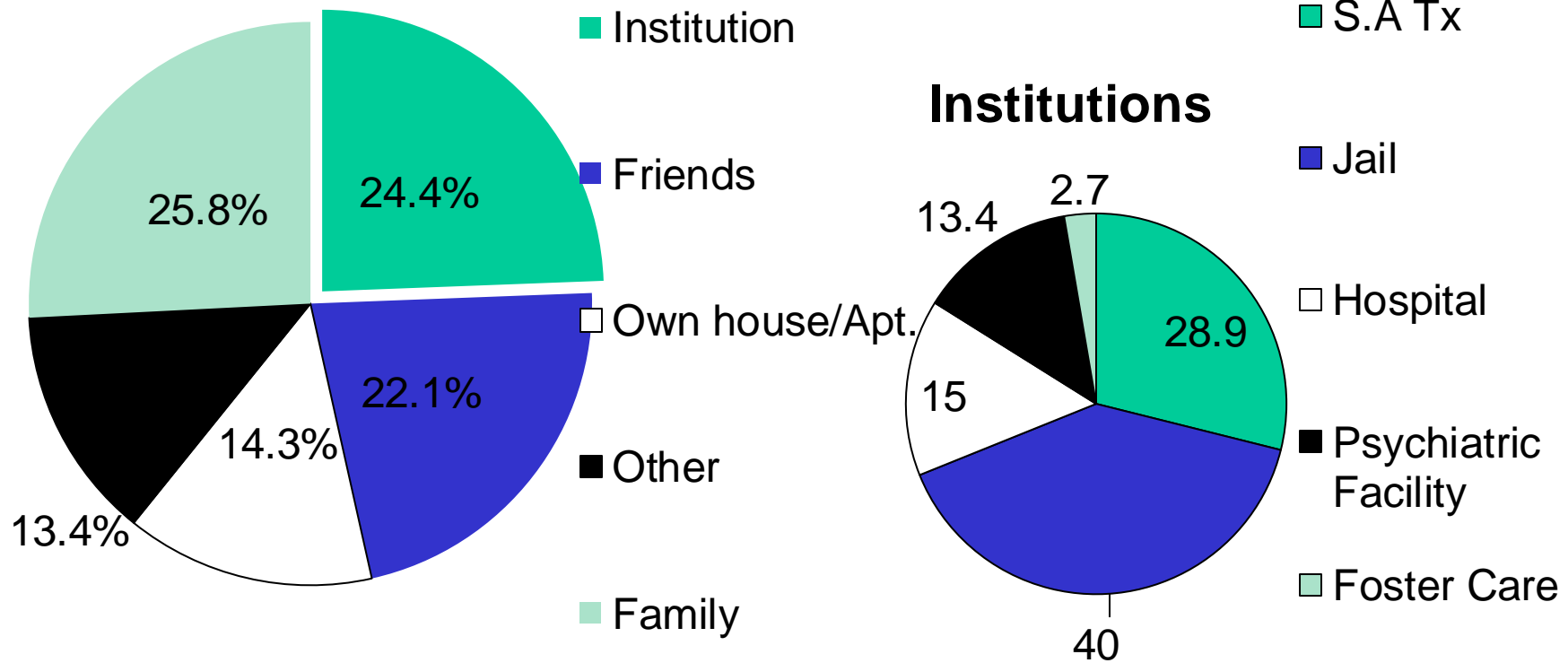


Annual Number of Households

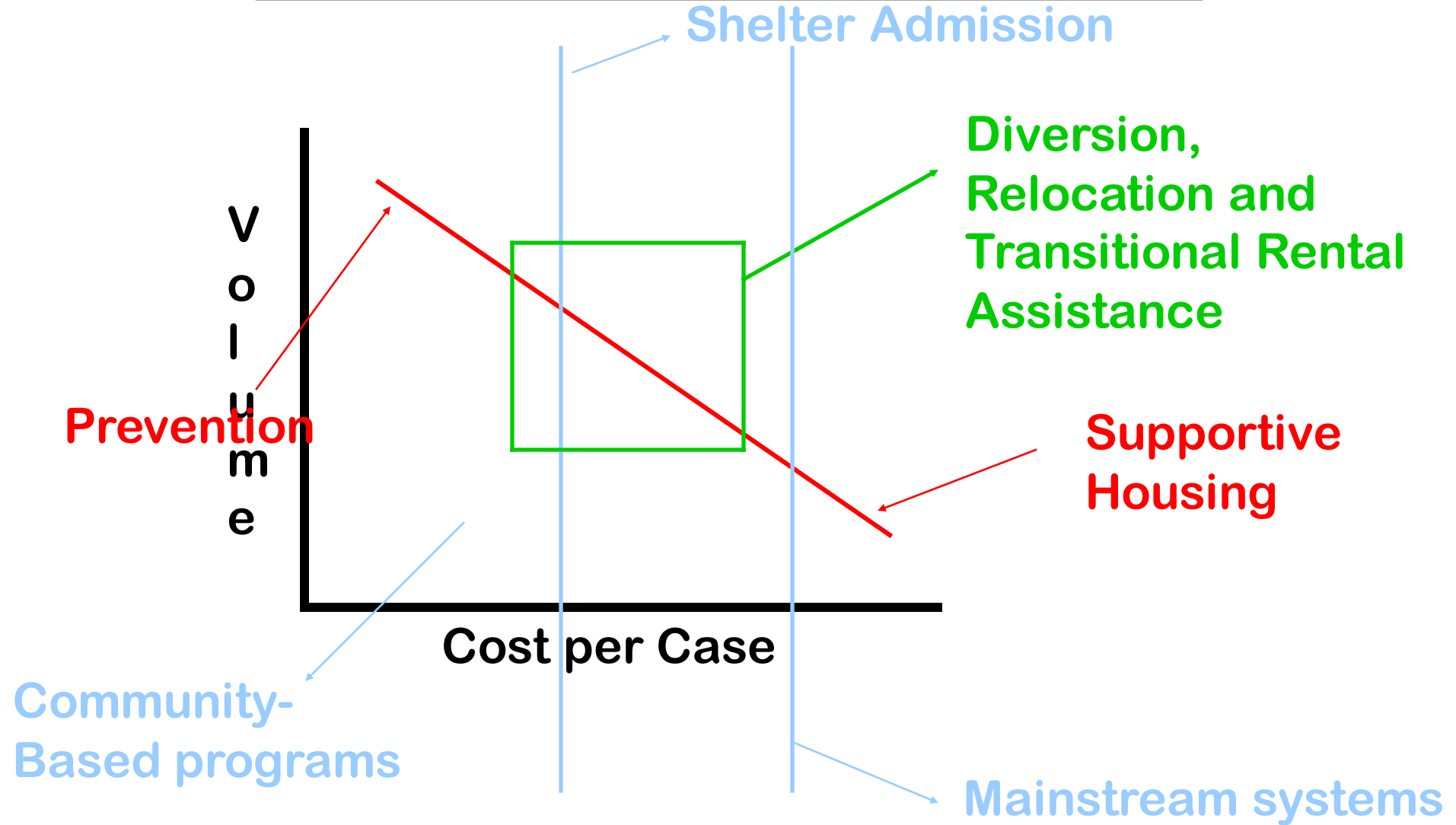




# Where do they Come From?

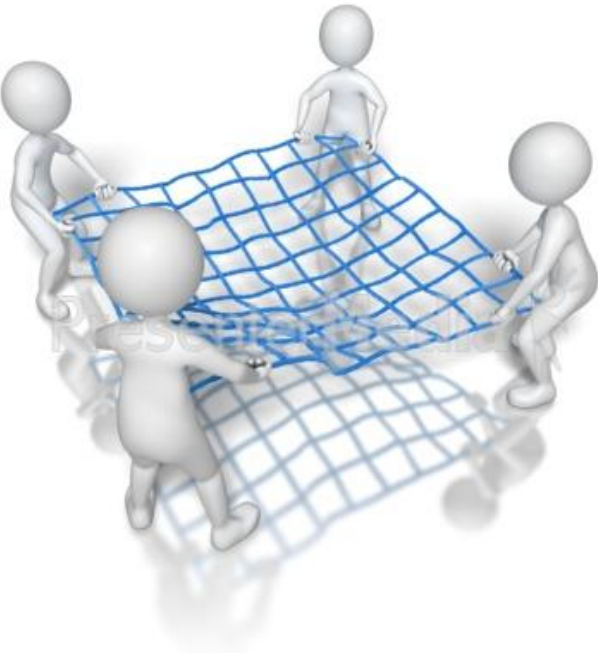


# Model Cost by Volume Service System for Addressing Housing Emergencies



# Crisis Homelessness Intervention Model

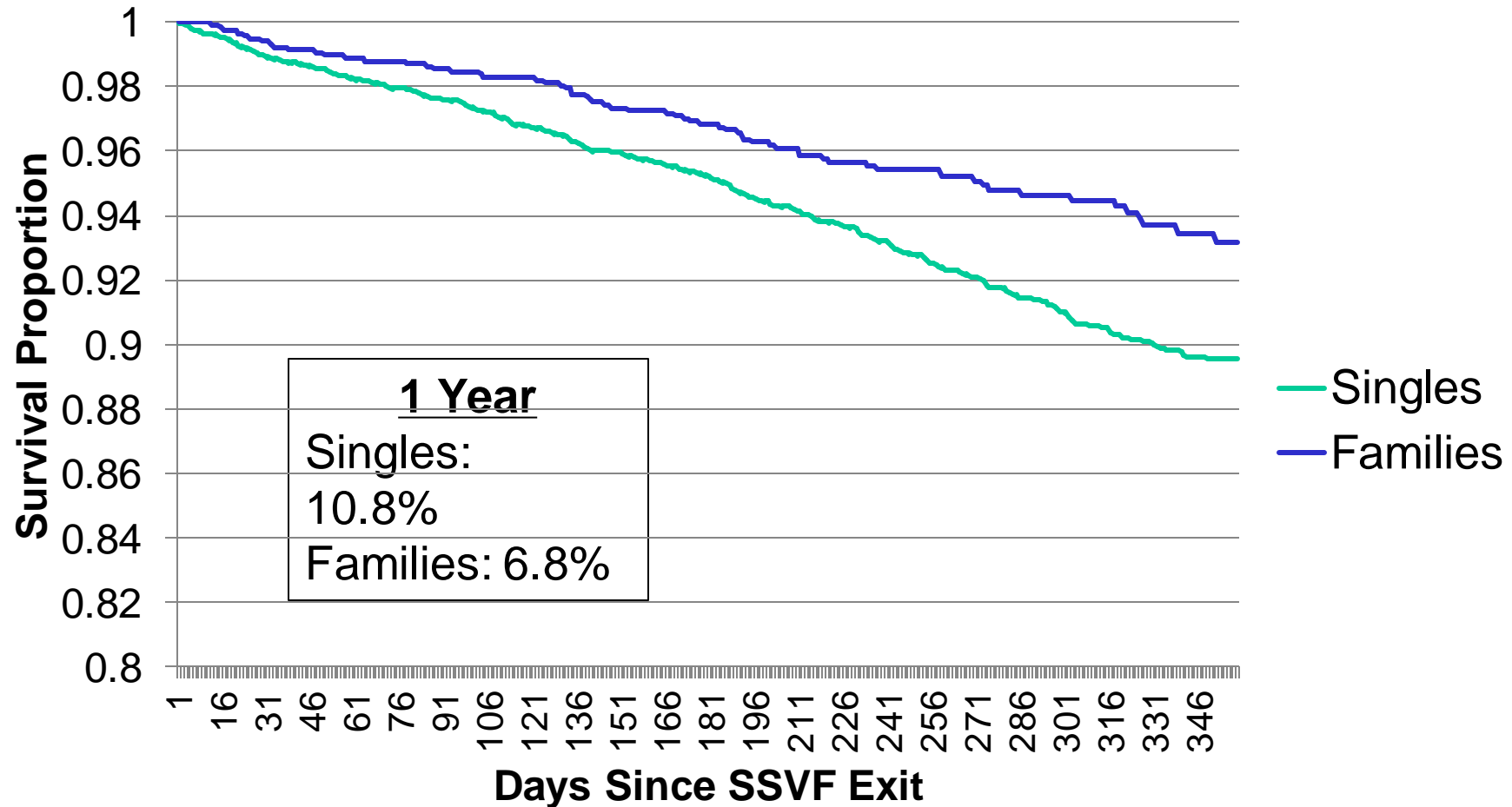
Prevention



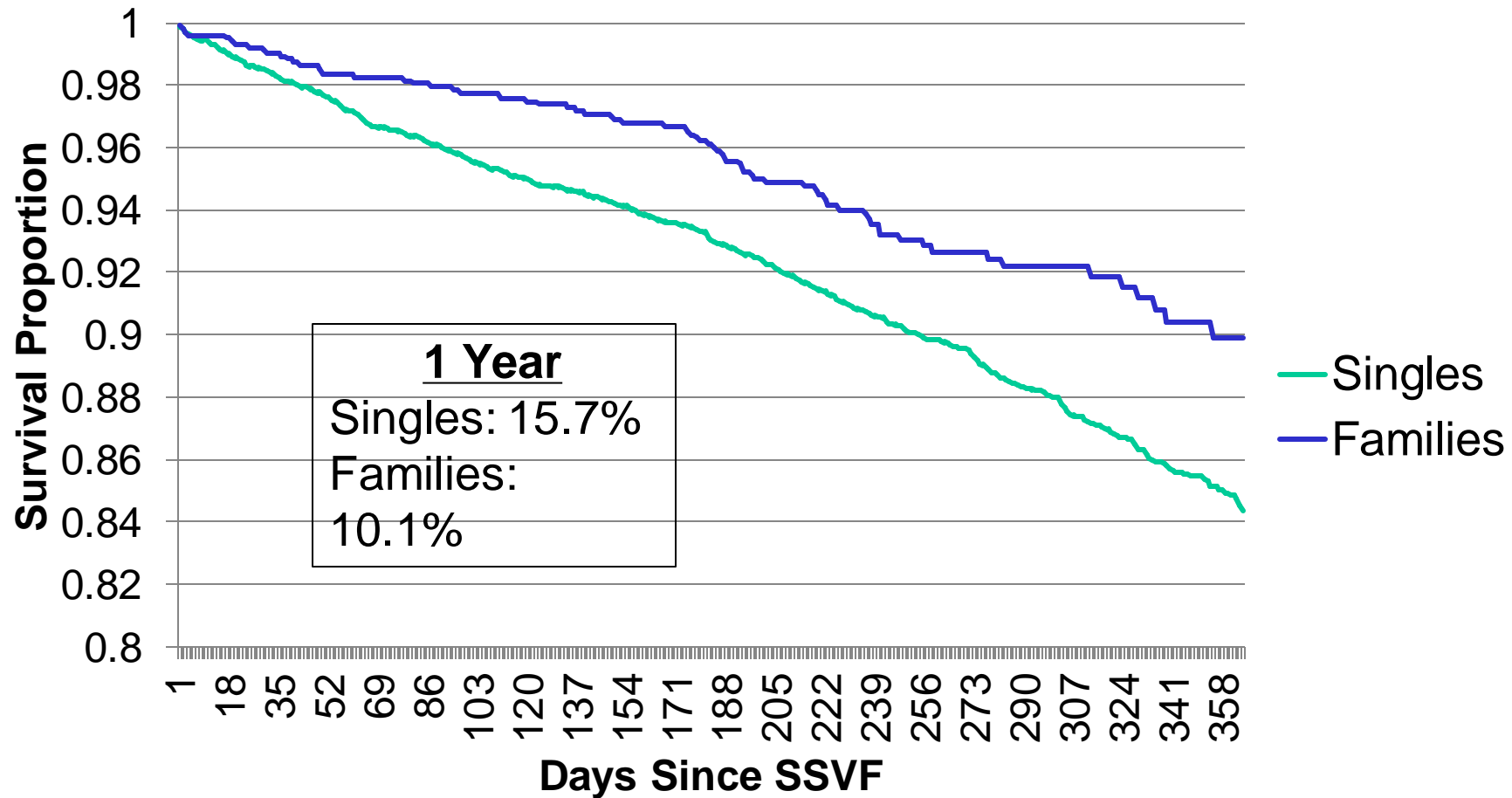
Rapid Rehousing



# SSVF Prevention: Housing Retention



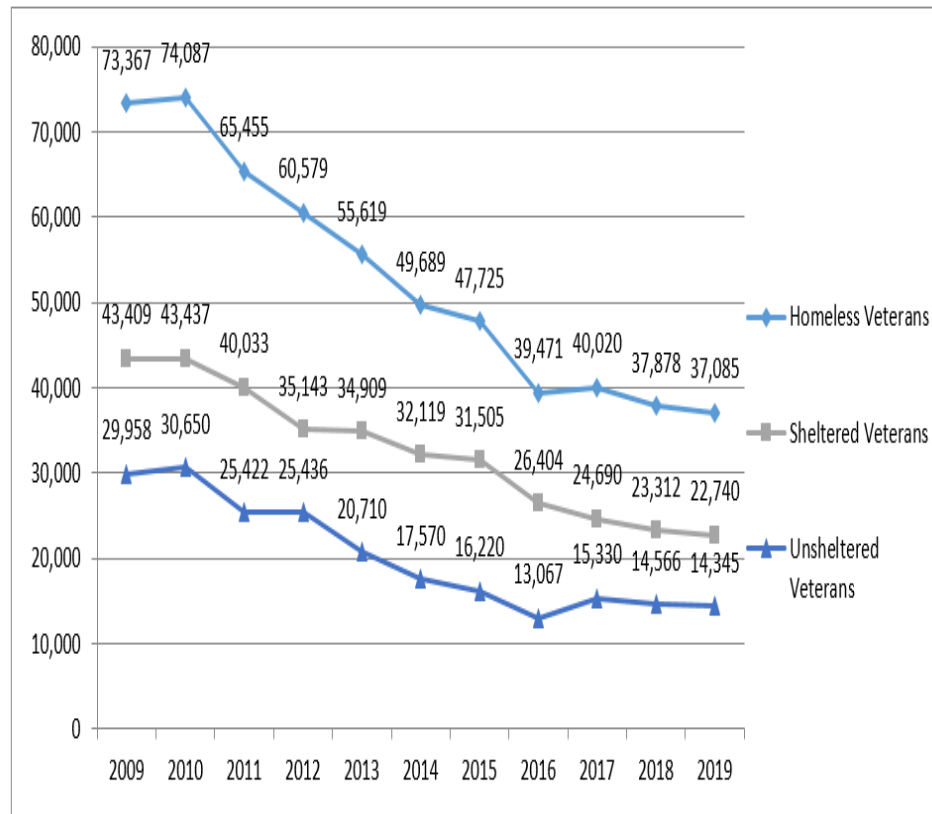
# SSVF Rapid Rehousing: Housing Retention



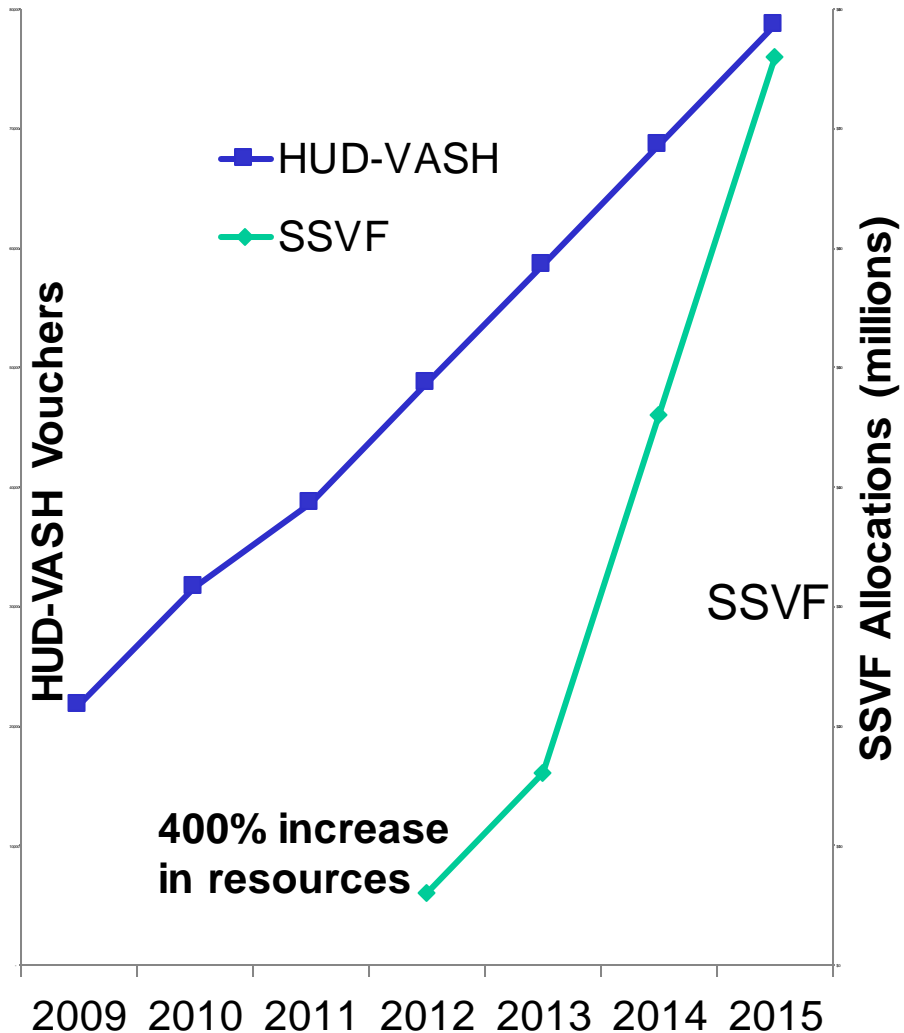
# PIT Counts

## 5.1 National Estimates of Veteran Homelessness, 2019

Exhibit 5-1: PIT Estimates of Veterans Experiencing Homelessness by Sheltered Status, 2009-2019

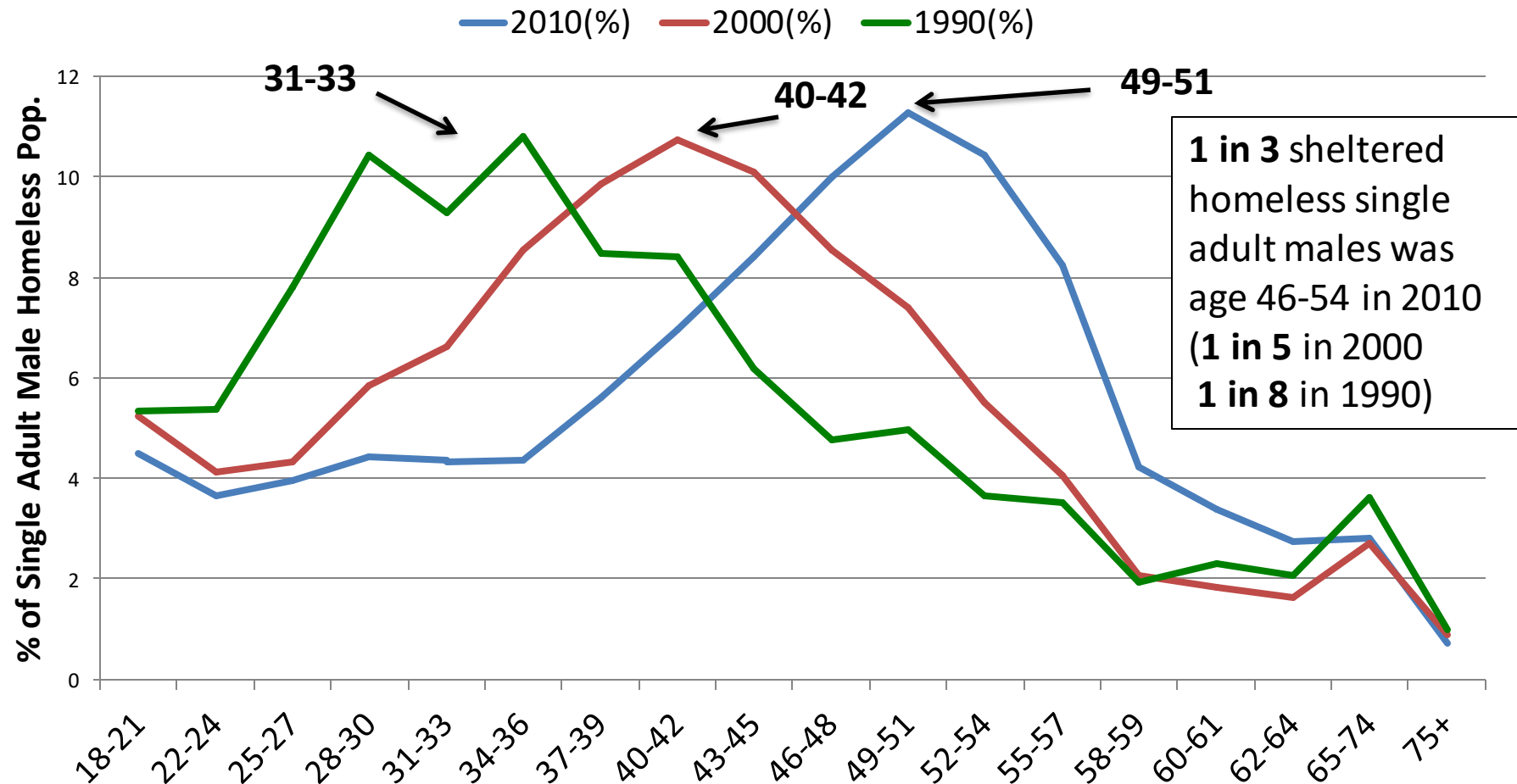


# Federal Resources

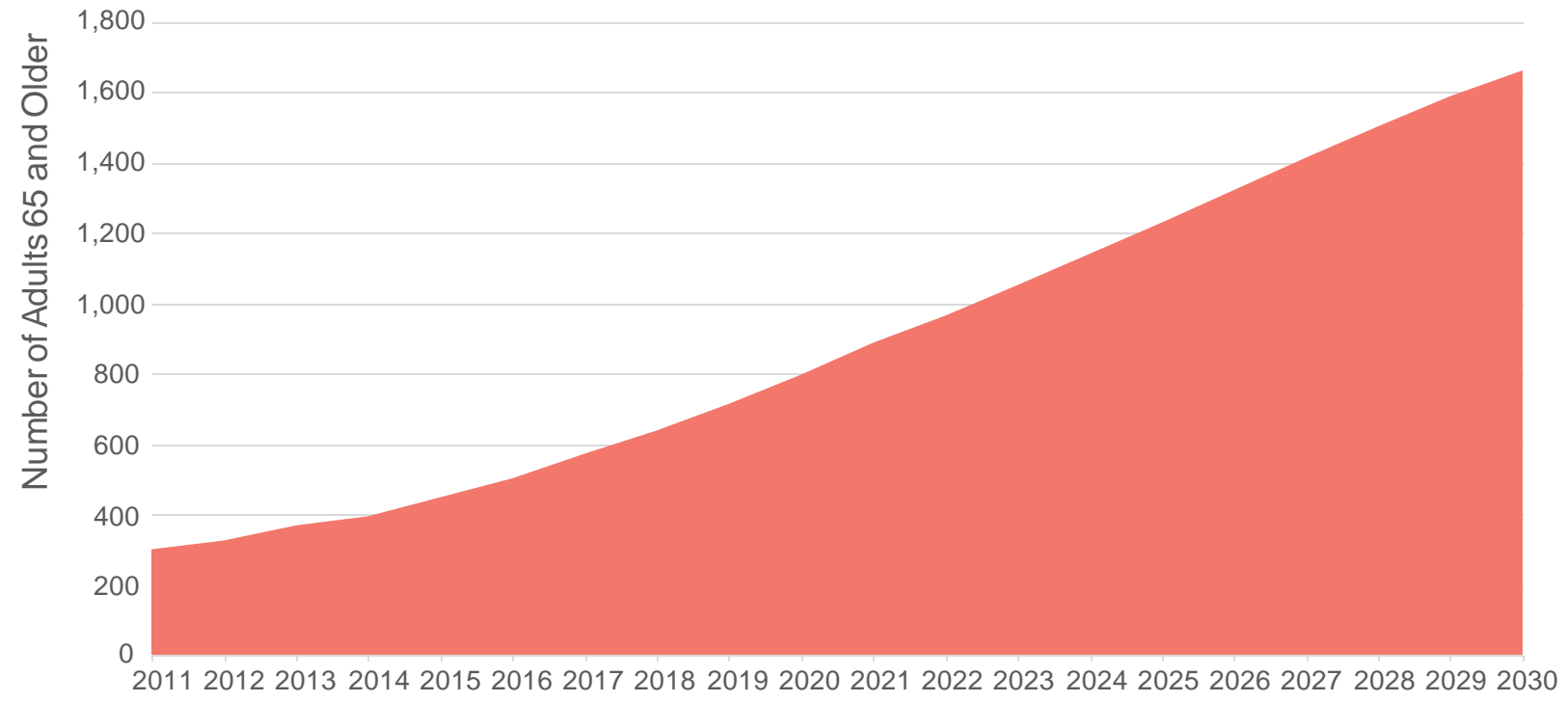


# A Birth Cohort Phenomenon: Persons Born 1955-1965

Age Distribution, Male Shelter Users, US Census



# Projecting the 65+ Homeless Adult Population: Boston, MA

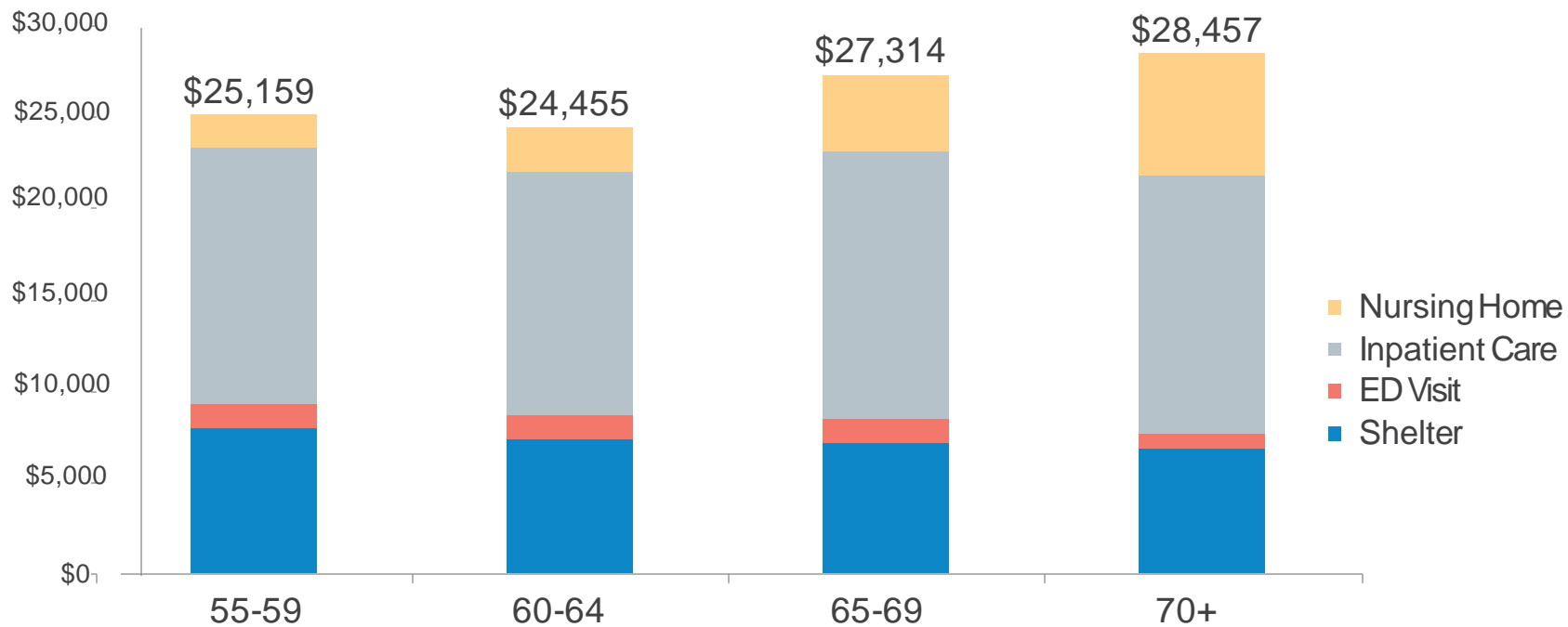




2

5

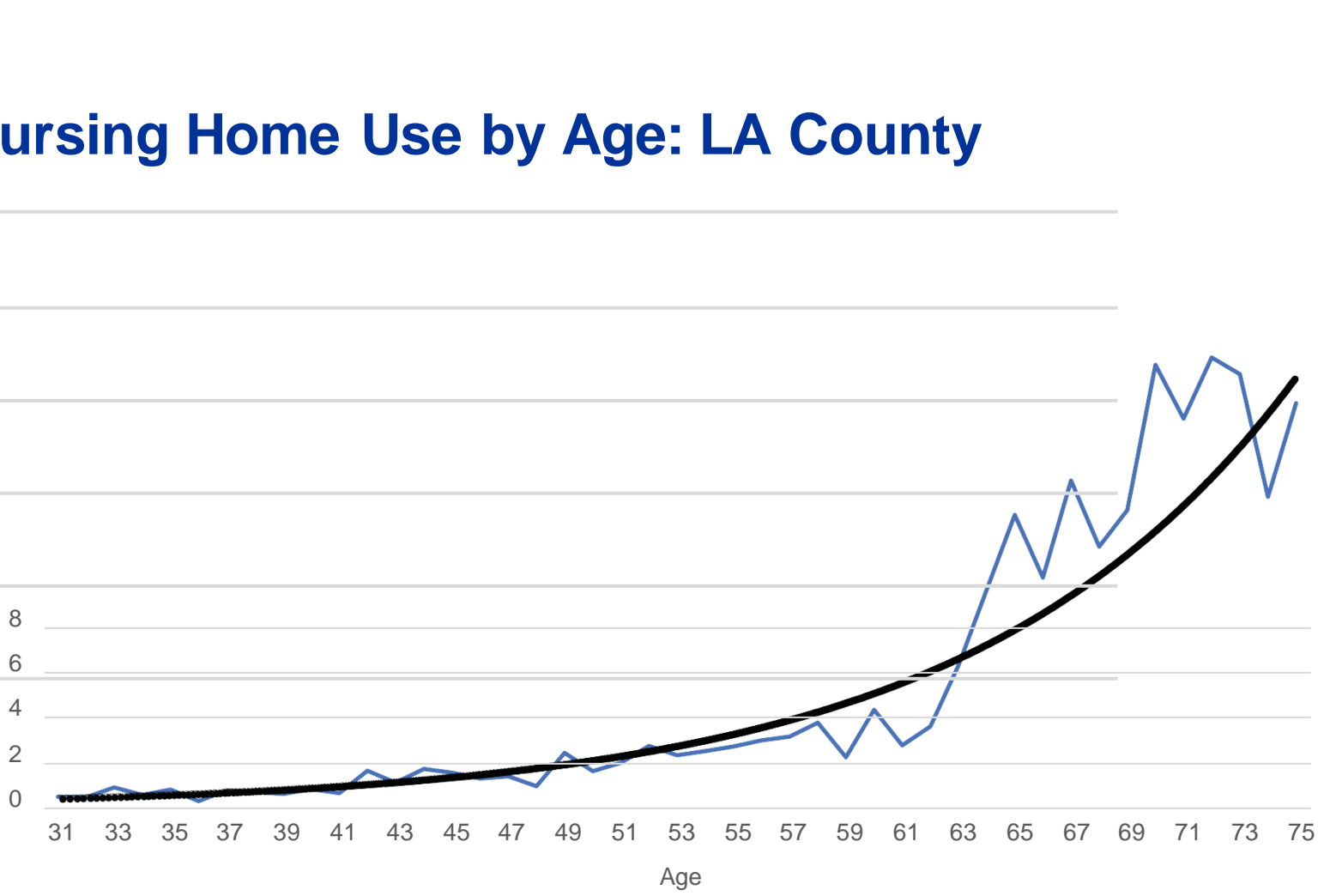
## Average Annual Per Person Costs by Age: New York City



# Nursing Home Use by Age: LA County

- 20
- 18
- 16
- 14
- 12
- 10

# of Days in Nursing Homes

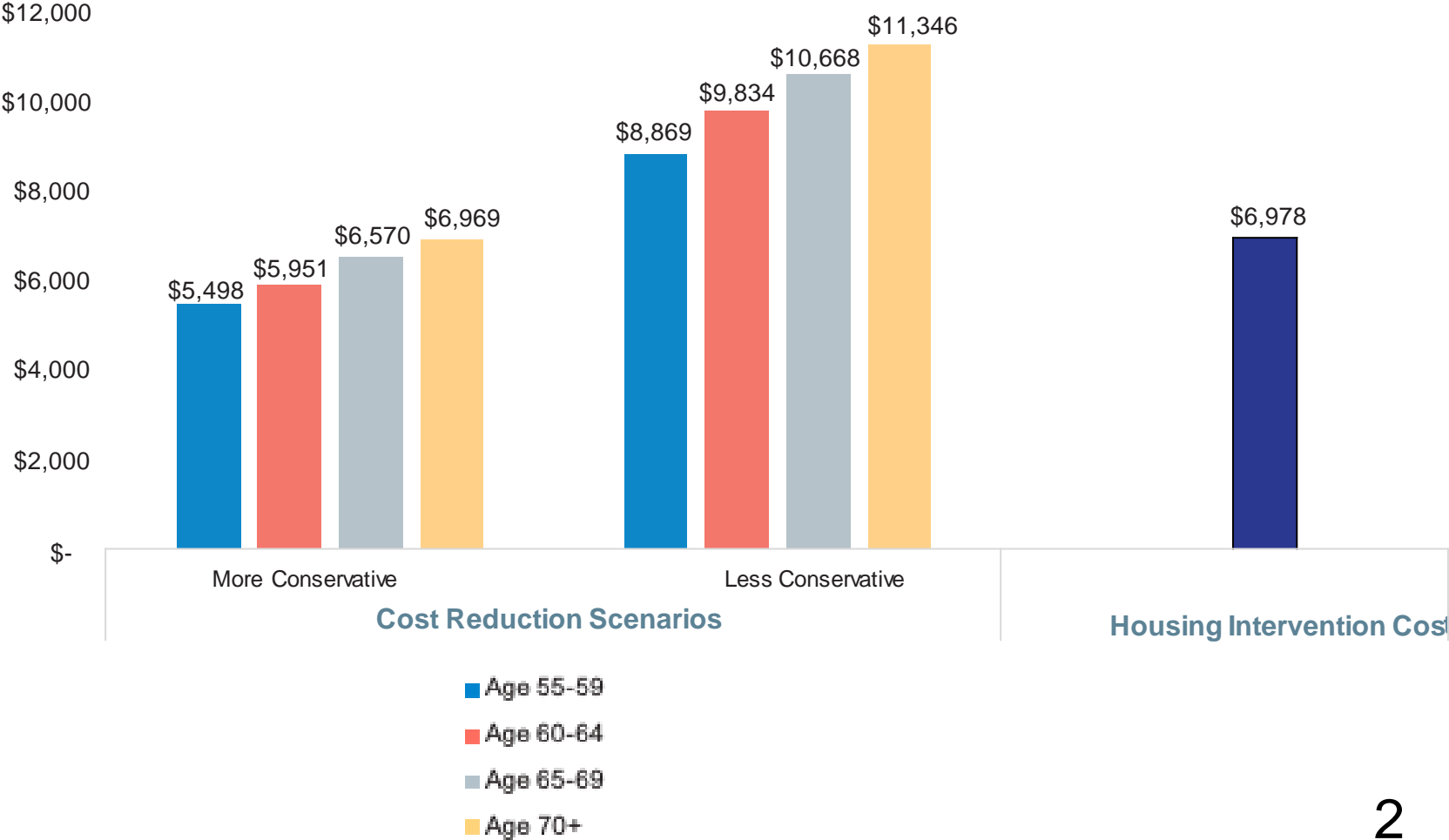


## Estimating Costs for Each Intervention

	Intervention	Annual Housing Cost	Annual Service Cost	Total Annual Cost
<b>Cluster 1</b>	Subsidy + Services	\$4,795	\$1,650	\$6,444
<b>Cluster 2</b>	PSH	\$15,468	\$11,500	\$26,968
<b>Cluster 3</b>	PSH	\$15,468	\$11,500	\$26,968
<b>Cluster 4</b>	PSH + Additional Supports	\$15,468	\$23,000	\$38,468

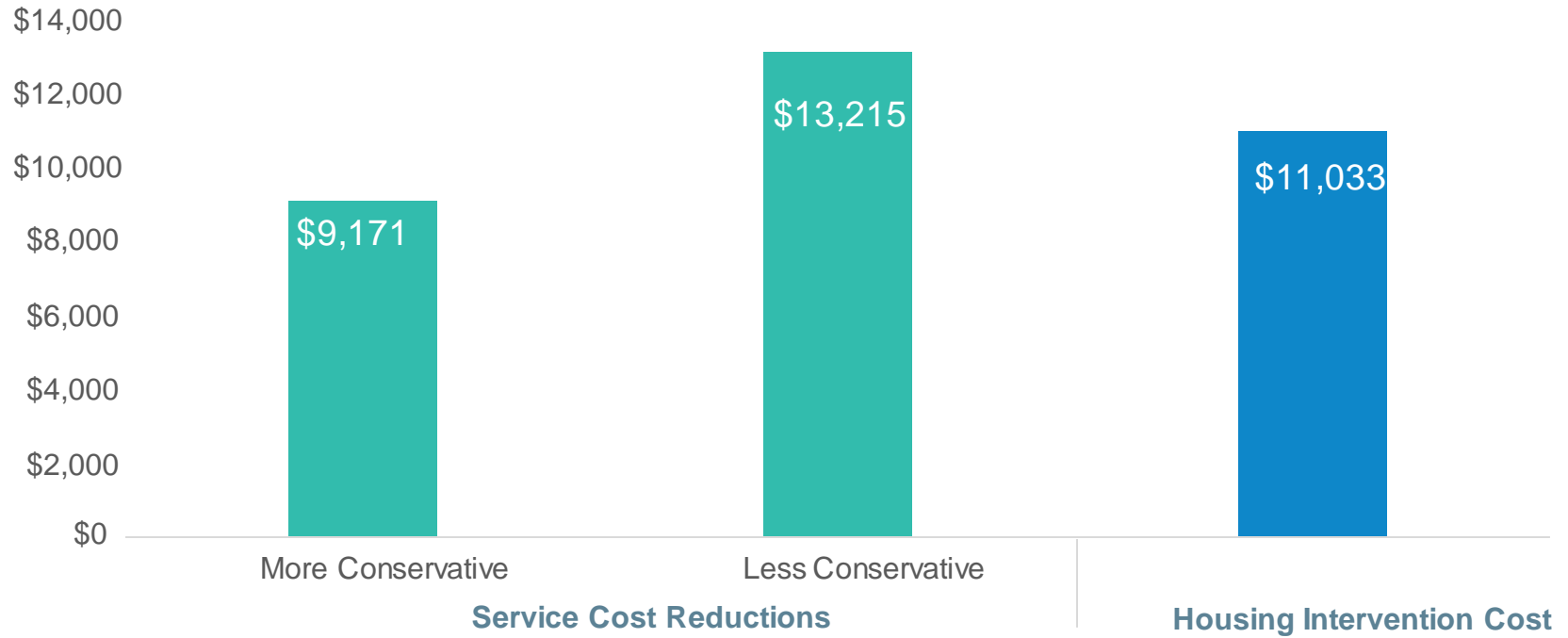
Medical Need	4			
	1	2	3	
Shelter Use				

# Cost Reduction Possibilities by Age Group: LA County Average per Person Per Year



2  
9

# Cost Reduction Possibilities in NYC Average Per Person Per Year



3

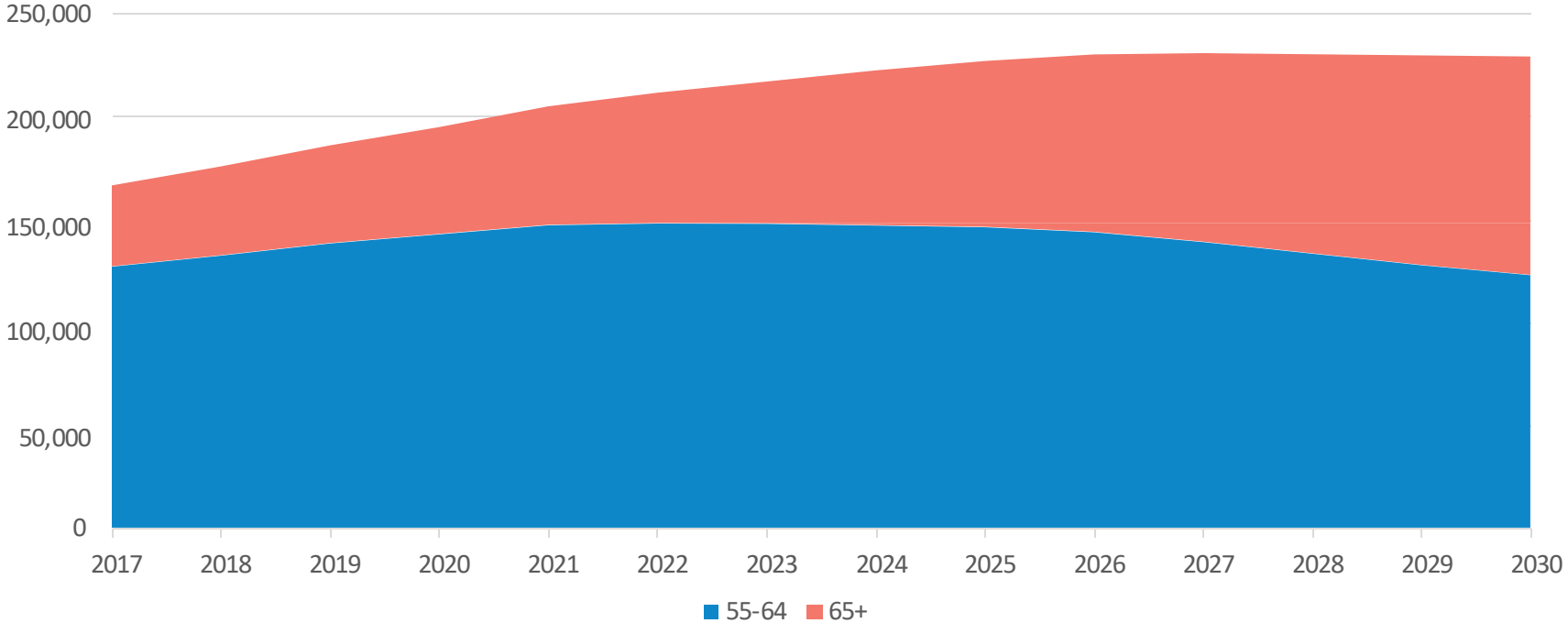
0

## Annualized Average Projected Costs & Potential Cost Reductions (in millions of \$)

	<b>Service Costs (w/out intervention)</b>	<b>Intervention Costs</b>	<b>Net Offsets: Average Service Cost Reductions</b>	<b>Service Cost Reductions - Intervention Costs</b>	<b>Return Per Dollar Spent</b>
★ New York City	\$408	\$157	\$177	\$20	1.13
Boston	\$67	\$39	\$30	(\$9)	0.77
LA County	\$621	\$241	\$274	\$33	1.14

★ Boston service costs and cost reductions exclude Medicare-reimbursed services. A forthcoming analysis estimating Medicare costs suggests that an intervention would be break-even or provide net savings

# National Projections (with cautions)



# Policy Considerations

- How to advance fund the housing “investment”?
  - MCOs as rapid rehousing funder under a critical time intervention model?
  - Start now targeting hospital and ER discharges and nursing home diversion?
  - Ramp up over time, starting with 65+ or 62+ to gain momentum and develop policies and procedures?
  - Federal challenge grant program to states for pilots?
  - Local/state pay for shallow subsidies as alternative to shelter, and sunseting over time?
  - Hospitals as key local leaders and conveners? Dissuade from “medical respite” push?
-



Questions?



# Thank you very much

Please do not hesitate to contact us regarding Permanent Supportive Housing

Mogens Bill Baerentzen, PhD., CRC, LMHP

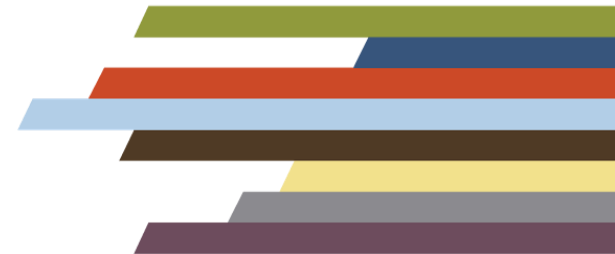
[Mogens.Baerentzen@unmc.edu](mailto:Mogens.Baerentzen@unmc.edu)



Mid-America (HHS Region 7)

**MHTTC**

Mental Health Technology Transfer Center Network  
Funded by Substance Abuse and Mental Health Services Administration



# Permanent Supportive Housing

Register for upcoming events:

<https://mhttcnetwork.org/centers/mid-america-mhttc/permanent-supportive-housing-monthly-webinar-series>



Mid-America (HHS Region 7)

**MHTTC**

Mental Health Technology Transfer Center Network  
Funded by Substance Abuse and Mental Health Services Administration

