



Mid-America (HHS Region 7)

MHTTC

Mental Health Technology Transfer Center Network

Funded by Substance Abuse and Mental Health Services Administration

Context Clues: Using Social Determinants of Health (SDOH) to Enhance Treatment: Homelessness Housing Instability

Brittany Liebsack, PhD, LP

Faculty Trainer

Mid-America MHTTC



MUNROE-MEYER
INSTITUTE

SAMHSA

Substance Abuse and Mental Health
Services Administration

Health Outcomes

Mortality, Morbidity, Life Expectancy, Health Care Expenditures, Health Status, Functional Limitations

Economic Stability

- Employment
- Food Insecurity
- **Housing Instability**
- Poverty

Education Access and Quality

- Early Childhood Education and Development
- Enrollment in Higher Education
- High School Graduation
- Language and Literacy

Social and Community Context

- Civic Participation
- Discrimination
- Incarceration
- Social Cohesion

Health Care Access and Quality

- Access to Health Care
- Access to Primary Care
- Health Literacy

Neighborhood and Built Environment

- Access to Foods that Support Healthy Eating Patterns
- Crime and Violence
- Environmental Conditions
- Quality of Housing

Four pathways connecting housing and health



SOURCE: Adapted by the author from Gibson et al. 2011, Sandel et al. 2018, Maqbool et al. 2015, and Braveman et al. 2011.

Housing Instability

- Cost burdened
- Overcrowding
- Forced moves
- Multiple moves
- Homelessness

Other Related Concerns

- Substandard housing
- Neighborhood factors
- Unsafe air or water
- Other health and safety risks

Housing Instability

- Cost burdened
- Overcrowding
- Forced moves
- Multiple moves
- Homeless

Other Related Concerns

- Substandard housing
- Neighborhood factors
- Unsafe air or water
- Other health and safety risks

Housing Instability

- Cost burdened
- Overcrowding
- Forced moves
- Multiple moves
- Homeless

Other Related Concerns

- Substandard housing
- Neighborhood factors
- Unsafe air or water
- Other health and safety risks

Who experiences housing instability in the United States?

Homelessness

- 500,000+ million Americans
- Nearly 2.5 million children

Cost burdened

- 21.3 million households

Rental home shortage

- 7.4 million

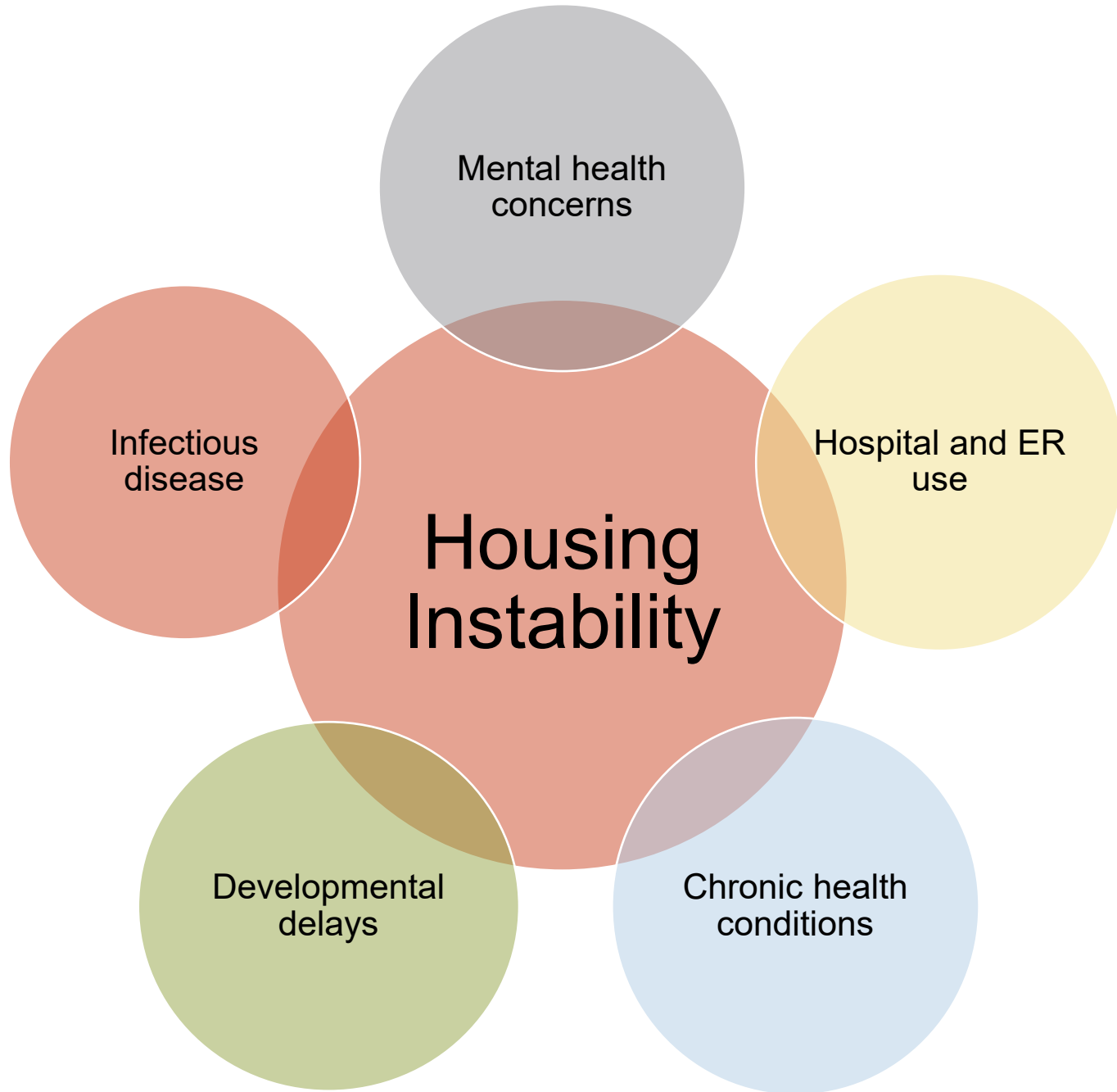
Who experiences housing instability in the Kansas?

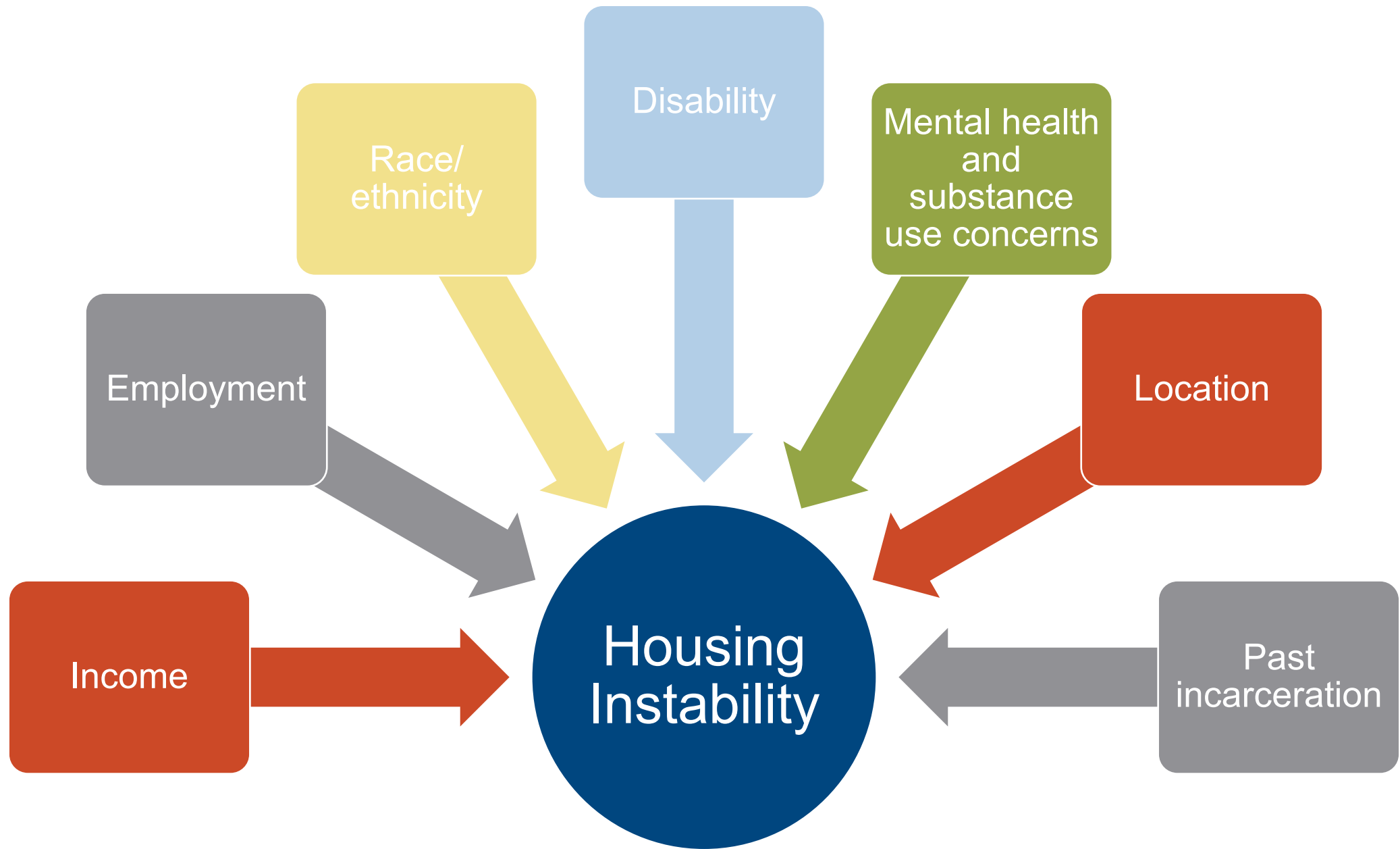
Department of Housing and Urban Development

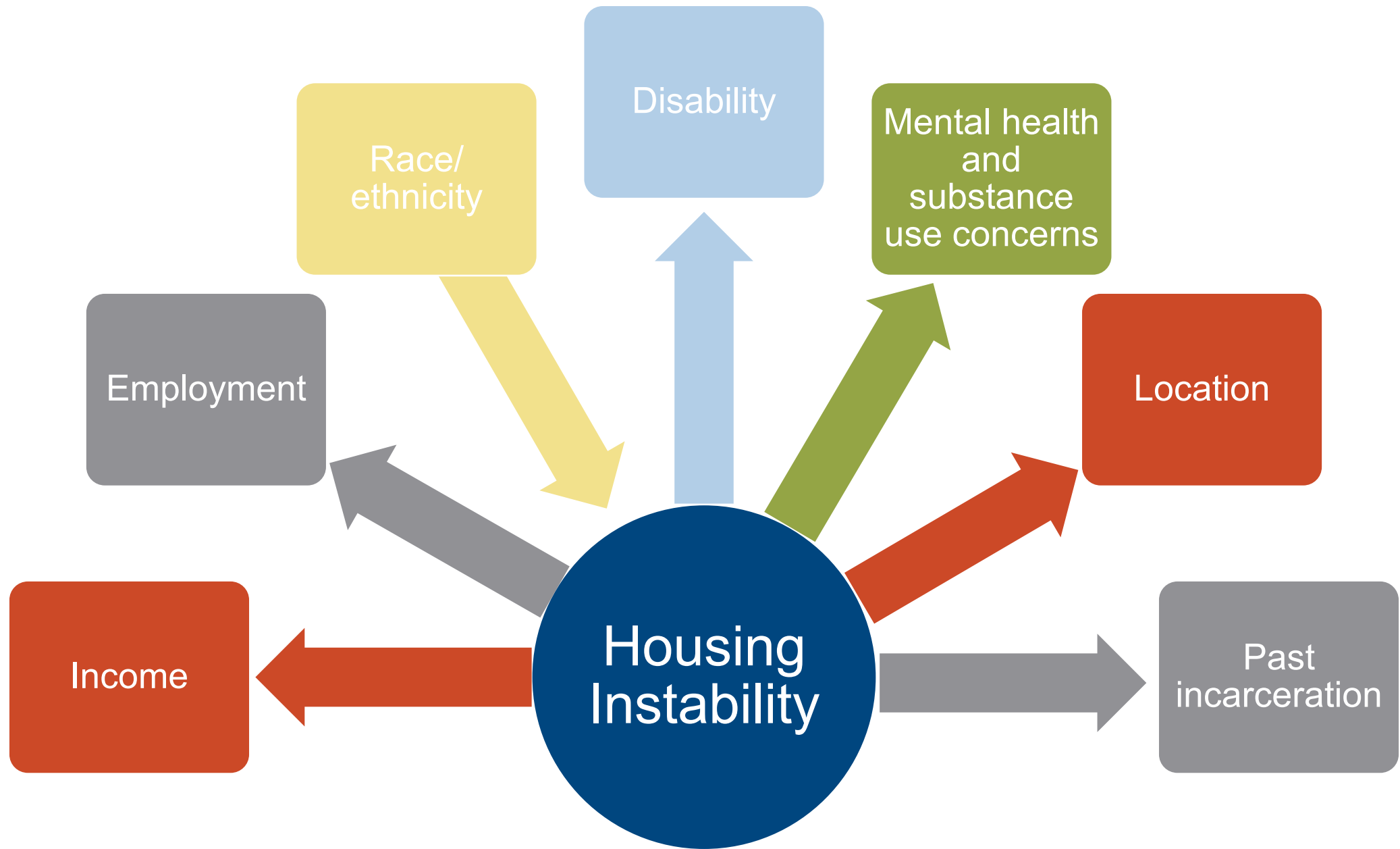
- 2,449 on any given day
 - 223 family households
 - 203 veterans
 - 153 unaccompanied young adults
 - 380 individuals experiencing chronic homelessness

Department of Education

- 8,369 public school students over the course of the year
 - 125 unsheltered
 - 772 in shelters
 - 507 in hotels/motels
 - 6,965 doubled up







Assessment & Intervention



AAFP's Framework to Address SDOH

ASK

- About SDOH

IDENTIFY

- Resources in patients' communities that can help address SDOH

ACT

- To help connect patients with resources to address patients' SDOH

Screening

PRAPARE

Housing
Stability Vital
Sign screening
tool

Universal VA
screening

PRAPARE: Protocol for Responding to and Assessing Patient Assets, Risks, and Experiences

14. In the past year, have you or any family members you live with been **unable** to get any of the following when it was **really needed**? Check all that apply.

Yes	No	Food	Yes	No	Clothing
Yes	No	Utilities	Yes	No	Child Care
Yes	No	Medicine or Any Health Care (Medical, Dental, Mental Health, Vision)			
Yes	No	Phone	Yes	No	Other (please write):
I choose not to answer this question					



Housing Stability Vital Sign screening tool

Was there a time
when you were not
able to pay the
mortgage or rent on
time?

How many places
have you lived?

At any time were
you homeless or
living in shelter
(including now)?

VA Screening Questions

In the past two months, have you been living in stable housing that you own, rent, or stay in as part of a household?

Are you worried or concerned that in the next two months you may NOT have stable housing that you own, rent, or stay in as part of a household?

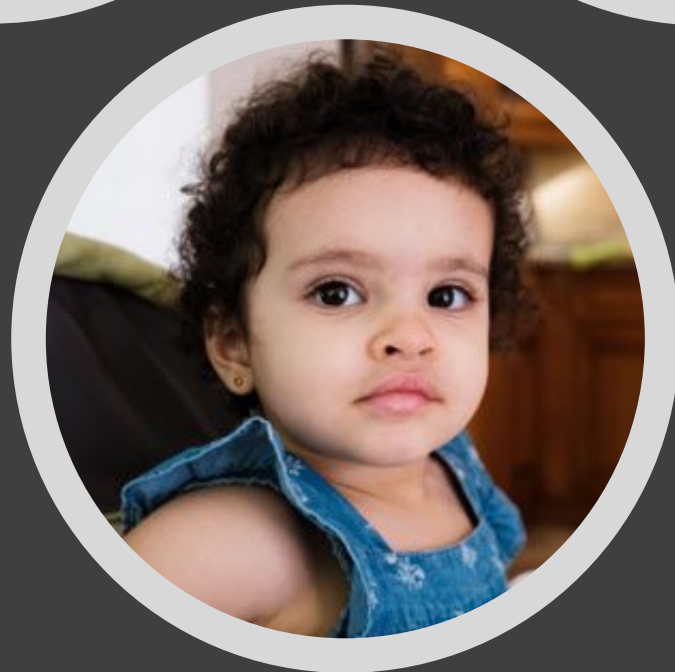
Z-codes

Z58	Problems related to physical environment	Z59	Problems related to housing and economic circumstances
	Z58.0 Exposure to noise		Z59.0 Homelessness
	Z58.1 Exposure to air pollution		Z59.1 Inadequate housing
	Z58.2 Exposure to water pollution		Z59.4 Lack of adequate food and safe drinking water
	Z58.3 Exposure to soil pollution		Z59. 5 Extreme poverty
	Z58.4 Exposure to radiation		Z59.6 Low income
	Z58.5 Exposure to other pollution		Z59.7 Insufficient social insurance and welfare support
	Z58.6 Inadequate drinking-water supply		Z59.8 Other problems related to housing and economic circumstances
	Z58.7 Exposure to environmental tobacco smoke		Z59.9 Problem related to housing and economic circumstances, unspecified
	Z58.81 Exposure to lead		Z59.8 Other problems related to housing and economic circumstances
	Z58.82 Exposure to asbestos	Z77	Other contact with and (suspected) exposures hazardous to health
	Z58.89 Other problems related to physical environment		
	Z58.9 Problem related to physical environment, unspecified		



Case Study

- Mother – Claudia
- Father – Patrick
- Grandmother – Ivonne
- Daughter – Tyler (age 16)
- Son – Elliot (age 13)
- Daughter – Edith (age 2)



Find **food assistance, help paying bills**, and other free or reduced cost programs, including new programs for the COVID-19 pandemic:

ZIP [Search](#)

6,924,399 people use it (and growing daily)

By continuing, you agree to the [Terms & Privacy](#)

findhelp.org is a service provided by



Enter your zip code

ZIP or keyword or program name



Find food assistance, help paying bills, and other free or reduced cost programs in Wichita, KS 67202 , including new programs for the COVID-19 pandemic:

Select Language



FOOD



HOUSING



GOODS



TRANSIT



HEALTH



MONEY



CARE



EDUCATION



1,743 programs

serve people in Wichita, KS 67202

Type a search term, or pick a category

This curated database of resources is provided by **Aunt Bertha, a Public Benefit Corporation.**

How to use Aunt Bertha

ZIP or keyword or program name



Find food assistance, help paying bills, and other free or reduced cost programs in Wichita, KS 67202 , including new programs for the COVID-19 pandemic:

Select Language



FOOD



HOUSING



GOODS



TRANSIT



HEALTH



MONEY



CARE



EDUCATION



WORK



LEGAL

Help Find Housing

Help Find Housing - All (14)

Help Pay For Housing



Housing Advice



Maintenance & Repairs



Residential Housing



Temporary Shelter

Type a search term, or pick a category

This curated database of resources is provided by Aunt Bertha, a Public Benefit Corporation.

Choose the category of assistance

I chose Housing

Support Sign Up Log In

FOOD
 HOUSING
 GOODS
 TRANSIT
 HEALTH
 MONEY
 CARE
 EDUCATION
 WORK
 LEGAL

Wichita, KS (67202) / housing / help find housing 1 - 10 of 14

Sort by RELEVANCE CLOSEST

Personal Filters
 Program Filters
 Income Eligibility

Due to the ongoing COVID-19 outbreak, some of this information may change. Call ahead before visiting.

Notice something out of date? Let us know, click [Suggest](#) to recommend a change.

Social Work Services

by Department Of Veterans Affairs (VA) - Veterans Health Administration (VHA)

The VA's Social Work Services provide support to service members, veterans, and their families in need of assistance. Our trained staff are here to help you and your family with a wide variety of...

Main Services: help find housing, counseling, mental health evaluation, financial assistance, navigating the system, help fill out forms, case management

Serving: adults 18+, veterans, all disabilities, individuals, families, spouses, dependents, all mental health, substance dependency

Next Steps:
Go to the [program's website](#).
3.31 miles (serves nationwide)
5500 East Kellogg Avenue, Wichita, KS 67218
Open Now : Open 24 Hours

MORE INFO SAVE SHARE NOTES SUGGEST SEE NEXT STEPS

Breakthrough Clubhouse

by Breakthrough

The Breakthrough Clubhouse is a social and vocational program that reduces isolation for those living with severe and persistent mental illness and provides support for their recovery....

Main Services: help find housing, health education, mental health care, community support services, navigating the system, case management, support network, peer support, help find school, help find work, job placement, supported employment

Serving: adults 18+, unemployed, individuals, homeless, all mental health

Next Steps:
Apply on their [website](#), call 316-269-2534 or email heather.snapp@breakthroughwichita.org to get more info.
1.01 miles (serves your local area)
1010 North Main Street, Wichita, KS 67201

Help Pay For Housing

- Help pay for internet or phone
- Help pay for utilities
- Housing vouchers

Housing Advice

- Foreclosure counseling
- Homebuyer education

Maintenance & Repairs

- Efficiency upgrades
- Health & safety

Residential Housing

- Long-term housing
 - Assisted living
 - Independent living
 - Public housing
- Safe housing
- Short-term housing
 - Sober living

Temporary Shelter

National/State Programs

Public Housing

Housing Choice
Voucher Program
(Formerly
Section 8)

COVID-19 Rental
Assistance

Permanent
Supportive
Housing

Coronavirus Housing and Homelessness Resources

Federal Eviction
Moratorium

Emergency Rental
Assistance

American Rescue
Plan Act

FEMA Resources

SBA Loans and
Nonprofit
Affordable
Housing Providers

Local Resources



Service Tree

The Service Tree lists all services in "branched" groups, starting with the very general and moving to the very specific. Click on the name of any group name to see the sub-groups available within it. Click on a service code to see its details and the providers who offer that service.

Search the Tree

Start Over

7

Viewing 1-10 of 46 services.

Transitional Housing/Shelter

Programs that provide extended shelter and supportive services primarily for homeless individuals and/or families with the goal of helping them live independently and transition into permanent housing. Some programs require that the individual/family...

Service code: BH-8600 | View providers »

At Risk/Homeless Housing Related Assistance Programs

Programs authorized under federal or state legislation or local government initiatives that provide financial assistance and supportive services for individuals and/or families who are homeless or at risk for homelessness. Included are prevention...

Service code: BH-0500 | View providers »

Housing Authorities

City, county, or state housing offices that provide information about eligibility for and vacancies in the subsidized housing properties that are under their jurisdiction. Housing authorities accept Section 8 applications, provide Section 8 vouchers,...

Service code: BH-8300.3000 | View providers »

Homeless Permanent Supportive Housing

Programs that provide affordable, community-based housing for individuals and families who have experienced long-term or chronic homelessness and have been diagnosed as having a physical or developmental disability, a severe mental illness, substance...

U.S. Department of Housing and Urban Development

[Home](#) / [Kansas](#)

KANSAS

Buying a Home?

View resources and programs available to help you buy and maintain your home.

[LEARN MORE](#)

FEATURED LOCAL NEWS

HUD Charges Kansas Homeowners

HUD Awards Over \$4K to Public Housing

HUD Announces Over \$39 Million to Increase

Currently 14,844 Homeless Shelters and Social Services.

[Home](#) [About](#) [Resources](#) [Homeless News](#)

HOMELESSSHELTERS DIRECTORY

Helping The Needy of America

[Home](#) [About](#) [Resources](#) [Contact](#)

[Homeless Shelters](#) [Homeless Shelters](#) [Homeless Shelters](#) [Get in Touch](#)

[Home](#) > [Kansas](#)

Kansas

The most complete list of shelters in Kansas. The shelters listed below are emergency shelters but many are general homeless shelters or transitional housing opportunities. Please note that many of these facilities have waiting lists (some are very long). Please call ahead to check availability first.

Kansas Homeless Statistics

Year	Homeless Individuals	Number of Beds
2015	~3,000	~4,500
2016	~2,500	~3,500
2017	~2,800	~4,200
2018	~2,800	~4,500
2019	~2,800	~4,800

City	In City	Nearby	County	Last Update
Abbeville		1	Reno	Sep 2, 2021
Abilene		3	Dickinson	Sep 2, 2021
Admire		2	Lyon	Sep 2, 2021
Afton Township		1	Lincoln	Sep 2, 2021
Agenda		3	Republic	Sep 2, 2021
Agra		2	Phillips	Sep 2, 2021
Albert		1	Barton	Sep 2, 2021
Alden		1	Rice	Sep 2, 2021

RESOURCES

Kansas Food Banks

We list thousands of soup kitchens and food banks all across the nation.

Free Dental Care Clinics

Search for public housing and affordable housing options now.

Free Treatment Centers

Find free and low cost drug rehab and alcohol detox treatment centers

TOP SHELTER SEARCHES

Homeless Shelters in Chicago

1

Homeless Shelters in Michigan

2

Homeless Shelters in California

3

Homeless Shelters in Orlando

4

NYC Homeless Shelters

5

Take aways



Highly
prevalent



Assess
regularly



Use the
Ask–ID–Act
framework



Be familiar
with
resources



References

America's Health Insurance Plans. (2018). *Safe & affordable housing: Social determinants of health*. <https://www.ahip.org/wp-content/uploads/2018/09/SDOH-Housing-IB-FINAL.pdf>

Centers for Disease Control and Prevention (n.d.) *Social determinants of health: Know what affects health*. <https://www.cdc.gov/socialdeterminants/index.htm>

HealthyPeople.gov. (n.d.) *Housing Instability*. <https://www.healthypeople.gov/2020/topics-objectives/topic/social-determinants-health/interventions-resources/housing-instability>

Sheward, R., Bovell-Ammon, A., Ahmad, N., Preer, G., Ettinger de Cuba, S., & Sandel, M. (n.d.) *Promoting caregiver and child health through housing stability screening in clinical settings*. Zero to Three. <https://www.zerotothree.org/resources/3199-promoting-caregiver-and-child-health-through-housing-stability-screening-in-clinical-settings>

Taylor, L. A. (2018). *Housing and health: An overview of the literature*. Health Affairs Health Policy Brief. https://www.healthaffairs.org/doi/10.1377/hpb20180313.396577/full/HPB_2018_RWJF_01_W.pdf

Upcoming Webinars

October 21st:

- Education
- Child Trauma

November 18th:

- Addiction:
Gambling,
Alcohol, Drugs
- Work Stress
and Burnout

December 16th:

- Internet Access
- Transportation,
Social Isolation

Please join us!



Mid-America (HHS Region 7)

MHTTC

Mental Health Technology Transfer Center Network

Funded by Substance Abuse and Mental Health Services Administration

Connect With Us

JOIN OUR MAILING LIST:



FOLLOW US ON SOCIAL MEDIA:



/MidAmericaMHTTC



@MidAmericaMHTTC



/company/MidAmericaMHTTC

EMAIL: midamerica@mhttcnetwork.org

WEBSITE: mhttcnetwork.org/midamerica



MUNROE-MEYER
INSTITUTE

SAMHSA

Substance Abuse and Mental Health
Services Administration