



Mid-America (HHS Region 7)

**MHTTC**

Mental Health Technology Transfer Center Network

Funded by Substance Abuse and Mental Health Services Administration

# Context Clues: Using Social Determinants of Health (SDOH) to Enhance Treatment: Domestic Violence

Marla Smith, MS, LMHP, LMHC

Trainer

Mid-America MHTTC



MUNROE-MEYER  
INSTITUTE

***SAMHSA***

Substance Abuse and Mental Health  
Services Administration

# Disclaimer

This presentation was prepared for the MHTTC Network under a cooperative agreement from the Substance Abuse and Mental Health Services Administration (SAMHSA). All material appearing in this presentation, except that taken directly from copyrighted sources, is in the public domain and may be reproduced or copied without permission from SAMHSA or the authors. Citation of the source is appreciated. Do not reproduce or distribute this presentation for a fee without specific, written authorization from the MHTTC Network Coordinating Office. This presentation will be recorded and posted on our website.

At the time of this publication, Miriam Delphin-Rittmon served as Assistant Secretary for Mental Health and Substance Use and Administrator of SAMHSA. The opinions expressed herein are the views of the speakers and do not reflect the official position of the Department of Health and Human Services (DHHS), or SAMHSA. No official support or endorsement of DHHS, SAMHSA, for the opinions described in this presentation is intended or should be inferred.

This work is supported by grants under Funding Opportunity Announcement (FOA) No. SM-18-015 from the DHHS, SAMHSA.

The MHTTC Network uses affirming, respectful and recovery-oriented language in all activities. That language is:

STRENGTHS-BASED  
AND HOPEFUL

INCLUSIVE AND  
ACCEPTING OF  
DIVERSE CULTURES,  
GENDERS,  
PERSPECTIVES,  
AND EXPERIENCES

HEALING-CENTERED/  
TRAUMA-RESPONSIVE

INVITING TO INDIVIDUALS  
PARTICIPATING IN THEIR  
OWN JOURNEYS

PERSON-FIRST AND  
FREE OF LABELS

NON-JUDGMENTAL AND  
AVOIDING ASSUMPTIONS

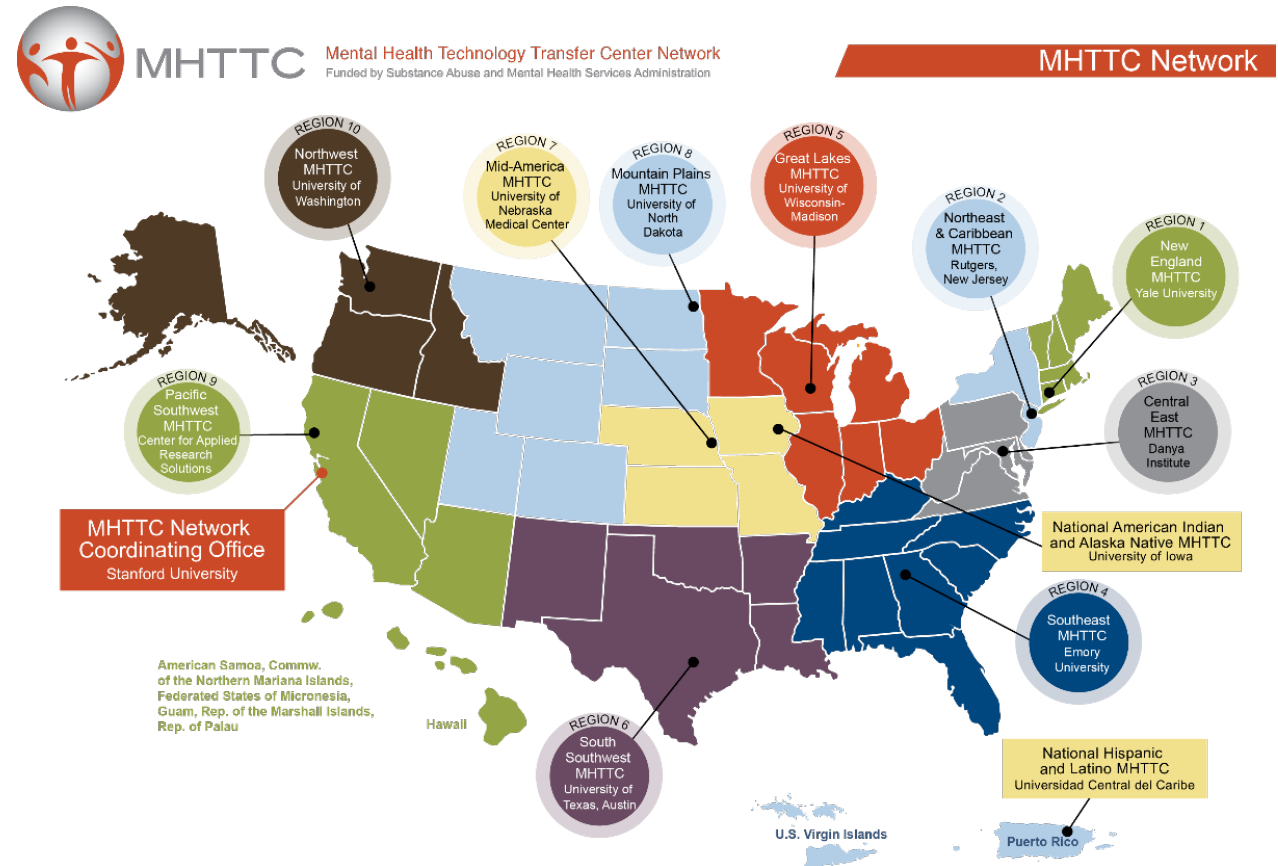
RESPECTFUL, CLEAR  
AND UNDERSTANDABLE

CONSISTENT WITH  
OUR ACTIONS,  
POLICIES, AND PRODUCTS

# Mid-America Mental Health Technology Transfer Center

Established to increase utilization of evidence-based mental health practices.

- Missouri, Iowa, Nebraska, and Kansas.
- Free training and technical assistance.
- SAMHSA grant awarded to the Behavioral Health Education Center of Nebraska at University of Nebraska Medical Center.  
(5 years, \$3.7 million, grant number: H79SM081769)





# Learning Objectives

This presentation provides an orientation to Domestic Violence as a Social Determinant of Health. You will:

- Learn the effect of domestic violence has on health and health care utilization
- Learn how to assess for domestic violence and how to address problems related to domestic violence
- Learn how to make referrals for appropriate services for additional support

# Health Outcomes

Mortality, Morbidity, Life Expectancy, Health Care Expenditures, Health Status, Functional Limitations

## Economic Stability

- Employment
- Food Insecurity
- Housing Instability
- Poverty

## Education Access and Quality

- Early Childhood Education and Development
- Enrollment in Higher Education
- High School Graduation
- Language and Literacy

## Social and Community Context

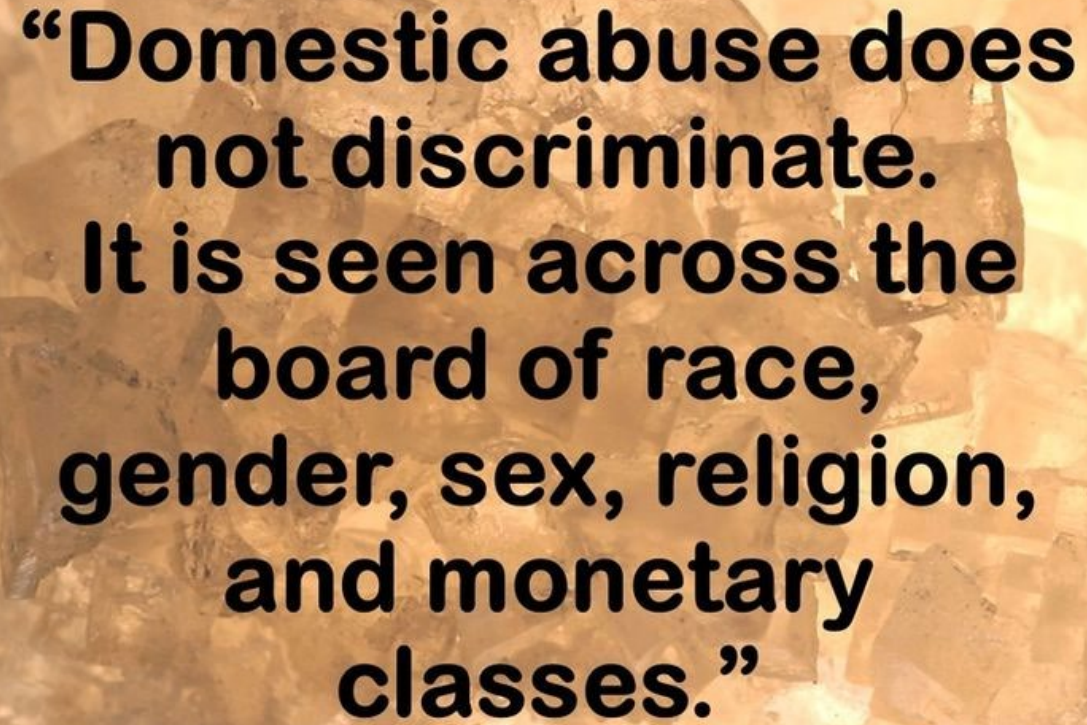

- Civic Participation
- Discrimination
- Incarceration
- Social Cohesion

## Health Care Access and Quality

- Access to Health Care
- Access to Primary Care
- Health Literacy

## Neighborhood and Built Environment

- Access to Foods that Support Healthy Eating Patterns
- Crime and Violence
- Environmental Conditions
- Quality of Housing



**“Domestic abuse does  
not discriminate.  
It is seen across the  
board of race,  
gender, sex, religion,  
and monetary  
classes.”**

*~ Domestic Violence Survivor*

[www.seethetriumph.org](http://www.seethetriumph.org)

# Domestic violence includes...

Economic

Physical

Sexual

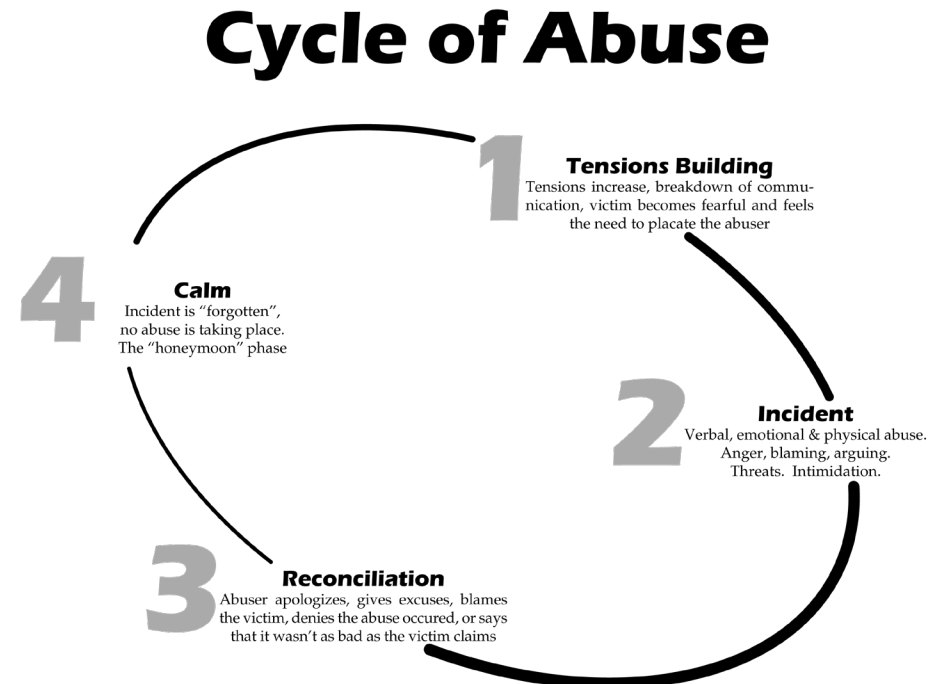
Emotional

Psychological



# Cycle of violence

- Can start in early childhood and continue throughout the life span and throughout generations



This Photo by Unknown Author is licensed under [CC BY-SA](#)

---

# Risk Factors

---

Lower education levels

---

Childhood abuse

---

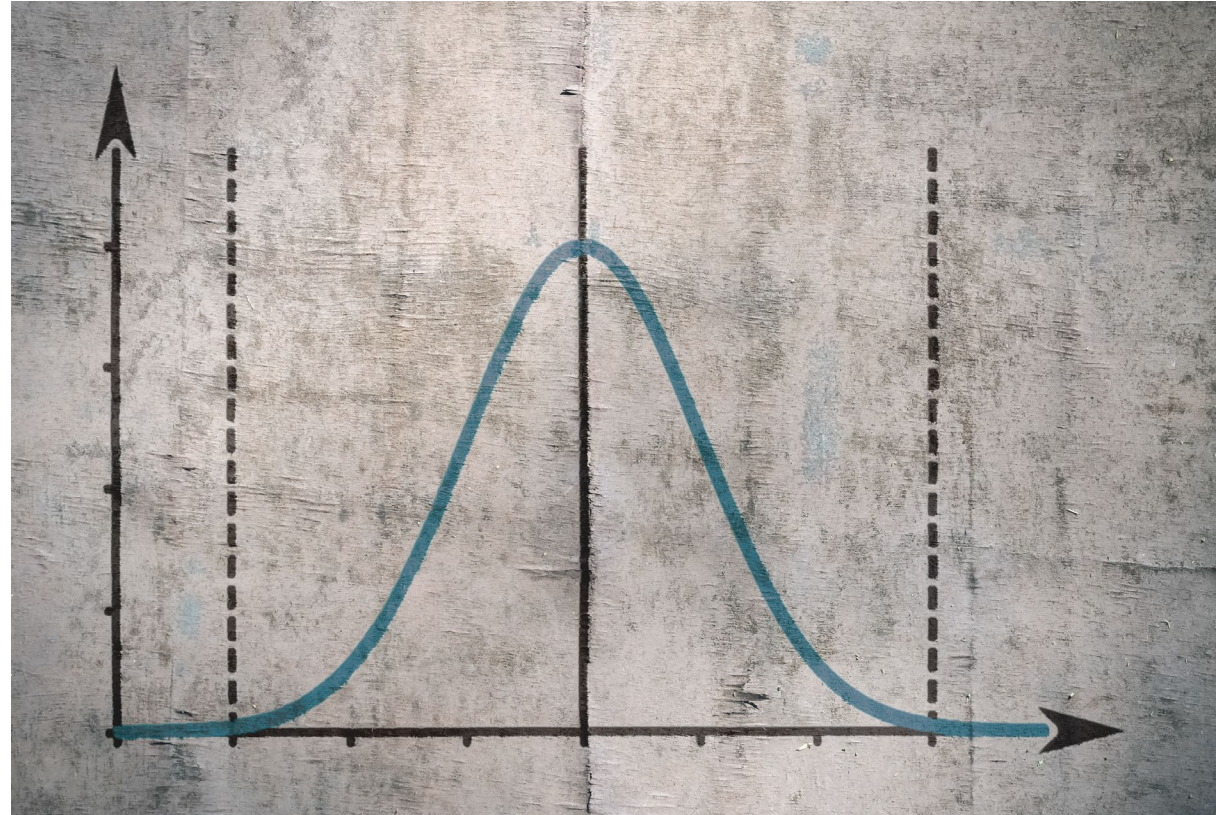
Drug and alcohol abuse

---

Financial hardship

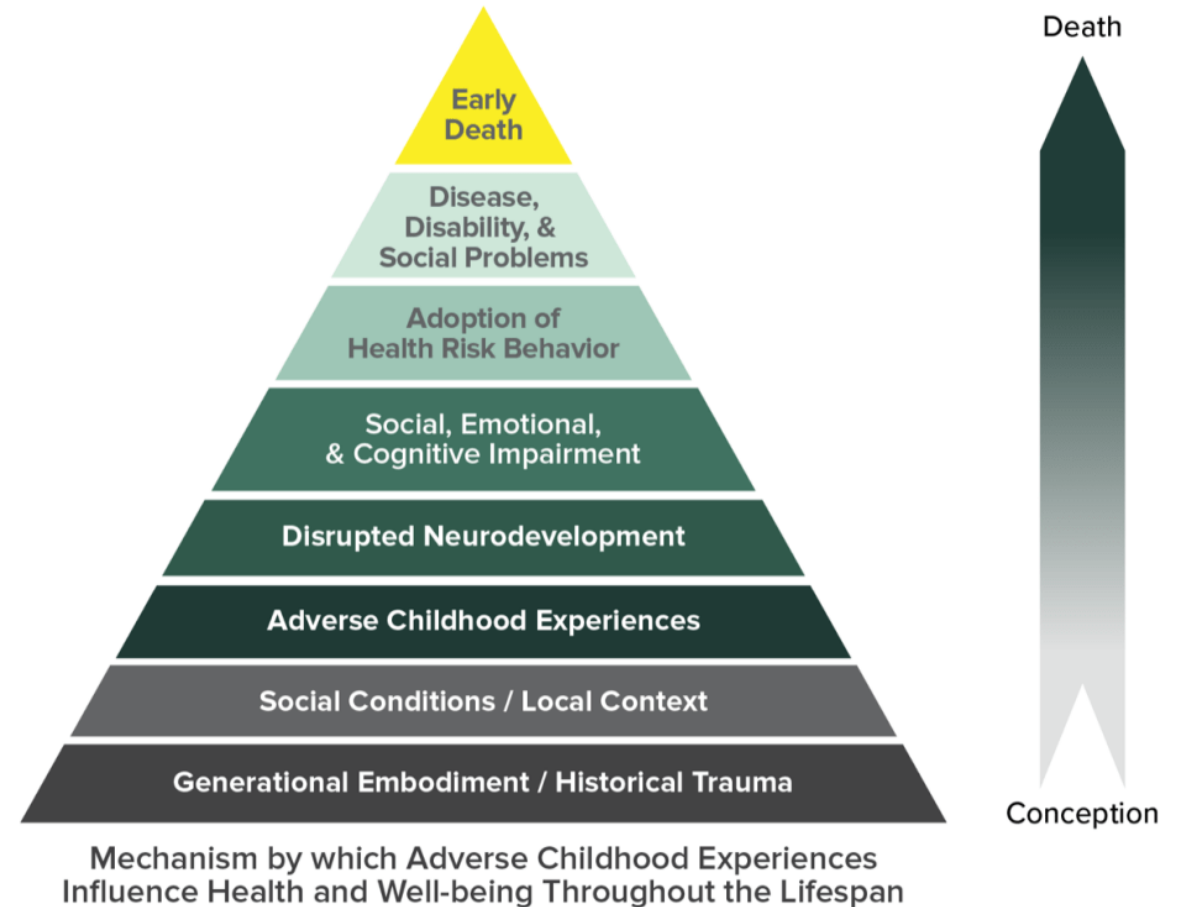
---

Unemployment



# Childhood Abuse

- 1 in 15 of children are exposed to intimate partner violence this year
- 90% of these children are eyewitnesses to these events





---

# Intimate Partner Violence

---

Intimate partner violence

Sexual violence

Stalking

---

# Elder abuse

---

- Often mistreated by spouses, children or relatives
- May be financial or physical but can be sexual, emotional or neglect



# Gay, Lesbian, Bisexual and Transgender Population



- Rates are thought to be like those of a heterosexual female, approx. 25%
- Transgender individuals have a higher risk of domestic violence. They are twice as likely to experience physical violence

---

# Men

---

- Represent as much as 15% of domestic partner violence cases
- Less likely to seek medical care so underreported
- May have a history of child abuse



# List of Z-code classification

---

Z91.410	Personal history of adult physical and sexual abuse
Z91.411	Personal history of adult psychological abuse
Z91.412	Personal history of adult neglect
Z91.419	Personal history of unspecified adult abuse
Z91.42	Personal history of forced labor or sexual exploitation
Z91.49	Other personal history of psychological trauma, not elsewhere classified
Z63.0	Problems in relationship with spouse or partner
Z63.1	Problems in relationship with in-laws



# Screening and Assessments

PRAPARE

Health Related  
Social Needs  
Assessment  
(HRSN)

# PRAPARE

20. Do you feel physically and emotionally safe where you currently live?

<input type="checkbox"/>	Yes	<input type="checkbox"/>	No	<input type="checkbox"/>	Unsure
<input type="checkbox"/>	I choose not to answer this question				

21. In the past year, have you been afraid of your partner or ex-partner?

<input type="checkbox"/>	Yes	<input type="checkbox"/>	No	<input type="checkbox"/>	Unsure
<input type="checkbox"/>	I have not had a partner in the past year				
<input type="checkbox"/>	I choose not to answer this question				

# Accountable Health Communities (AHC) Health Related Social Needs Assessment (HRSN)

## Safety

Because violence and abuse happens to a lot of people and affects their health we are asking the following questions.<sup>8</sup>

7. How often does anyone, including family and friends, physically hurt you?

- Never (1)
- Rarely (2)
- Sometimes (3)
- Fairly often (4)
- Frequently (5)

8. How often does anyone, including family and friends, insult or talk down to you?

- Never (1)
- Rarely (2)
- Sometimes (3)
- Fairly often (4)
- Frequently (5)

9. How often does anyone, including family and friends, threaten you with harm?

- Never (1)
- Rarely (2)
- Sometimes (3)
- Fairly often (4)
- Frequently (5)

10. How often does anyone, including family and friends, scream or curse at you?

- Never (1)
- Rarely (2)
- Sometimes (3)
- Fairly often (4)
- Frequently (5)

# AAFP's Framework to Address SDOH

## ASK

- Directly or indirectly
- Can be oral or written as different patients respond to different approaches
- Make sure to ask in a private setting and do not use family or friends as interpreters
- Patients highly value compassion and being nonjudgmental

## IDENTIFY

- Resources in patients' communities that can help address- Aunt Bertha

## ACT

- To help connect patients with resources to address patients' SDOH

# Barriers

- Lack of reporting
  - Evasion/Downplaying/assuming blame
  - Denial
  - Shame/Embarrassment
- Fear
  - Losing custody of children
  - Retribution
  - Bodily harm or worse
  - Resources
- Cultural and Religious Reasons

# National Resources

## The National Domestic Violence Hotline (800) 799-SAFE (7233)

- Available 24 hours a day, 7 days a week
- Connect via chat on the website  
<https://thehotline.org>
- Text START to 88788

## The National Dating Abuse Hotline 866-331-9474

- Available 24 hours a day, 7 days a week
- Connect via chat on the website  
<https://loveisrespect.org>
- Text LOVEIS to 22522

## The National Sexual Assault Hotline (800) 656-HOPE (4673)

- Available 24 hours a day, 7 days a week
- Connect via chat on the website  
[www.rainn.org/gethelp](http://www.rainn.org/gethelp)

# Local Resources

**Kansas Crisis Hotline  
1-888-363-2287**

- 24-hour statewide hotline

**Kansas Coalition  
against sexual and  
domestic violence**

- <https://www.kcsdv.org>

# Aunt Bertha - <https://aetna-ks.auntbertha.com>

Search and connect to support. Financial assistance, food pantries, medical care, and other free or reduced-cost **help starts here:**

ZIP

67601

Q Search



Aetna Better Health® of Kansas

By continuing, you agree to the [Terms & Privacy](#)



# Aunt Bertha - <https://aetna-ks.auntbertha.com>

The screenshot shows the navigation menu of the Aunt Bertha website. At the top, there is a 'Select Language' dropdown. Below it is a horizontal bar with icons and labels for various services: FOOD (apple icon), HOUSING (house icon), GOODS (lamp icon), TRANSIT (bus icon), HEALTH (heart with pulse icon), MONEY (wallet icon), and CARE (person icon). The 'CARE' button is circled in red. Below this bar is a list of categories, each with a right-pointing chevron. The 'Physical Safety' category is circled in red. To the right of the 'Physical Safety' category, a list of sub-items is displayed, with 'help find missing persons (9)', 'immediate safety (7)', and 'help escape violence (5)' circled in red.

Select Language

FOOD HOUSING GOODS TRANSIT HEALTH MONEY CARE

Adoption & Foster Care >

Animal Welfare

Community Support Services >

Daytime Care >

End-Of-Life Care >

Navigating The System >

**Physical Safety** >

Residential Care >

Support Network >

**Physical Safety - All (54)**

- disaster response (26)
- emergency food (7)
- help find missing persons (9)
- immediate safety (7)
- help escape violence (5)
- safety education (4)
- temporary shelter (8)

# Aunt Bertha - <https://aetna-ks.auntbertha.com>

The screenshot displays the Aunt Bertha website interface. At the top, there is a teal header with a language selection dropdown. Below this is a navigation bar with icons and labels for various categories: FOOD (apple icon), HOUSING (house icon), GOODS (lamp icon), TRANSIT (bus icon), HEALTH (heart icon), MONEY (wallet icon), CARE (person icon, circled in red), and EDUCATION (book icon). A dropdown menu is open under the 'CARE' category, listing several resource categories with their respective counts. The 'Support Network - All (639)' item is circled in red. At the bottom of the page, a footer states: 'This curated database of resources is provided by Aetna Better Health of Kansas'.

Select Language ▾

FOOD HOUSING GOODS TRANSIT HEALTH MONEY **CARE** EDUCATION

- Adoption & Foster Care >
- Animal Welfare
- Community Support Services >
- Daytime Care >
- End-Of-Life Care >
- Navigating The System >
- Physical Safety >
- Residential Care >
- Support Network** >

**Support Network - All (639)**

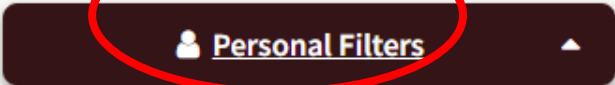
- counseling (64)
- help hotlines (148)
- home visiting (5)
- in-home support (12)
- mentoring (25)
- one-on-one support (162)
- peer recovery coaching (1)
- peer support (153)
- spiritual support (14)
- support groups (163)
- 12-step (17)
- bereavement (35)
- parenting education (36)
- virtual support (278)

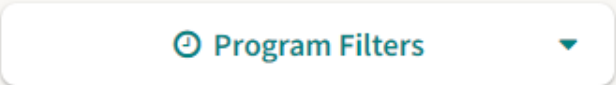
This curated database of resources is provided by **Aetna Better Health of Kansas**

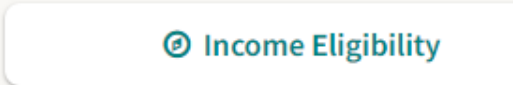
# Aunt Bertha - <https://aetna-ks.auntbertha.com>

Hays, KS (67601) / care / support network < 1 - 25 of 639 >

Sort by RELEVANCE CL

 Personal Filters ▲

 Program Filters ▼

 Income Eligibility

### Age Group

- infants: 0 months - 1 year
- children: 2 - 12 years
- teens: 13 - 19 years
- young adults: 20 - 30 years
- adults: 31 - 54 years
- seniors: 55 years+

### Armed Forces

- active duty
- national guard
- veterans

### Citizenship

- immigrants

### Health

- alzheimers
- autism
- cancer**
  - all cancer types
  - brain stem glioma
  - brain tumor
  - breast cancer
  - cervical cancer
  - chronic myelogenous leukemia (cml)
  - colon cancer
  - colorectal cancer
  - ductal carcinoma in situ

### Housing

- home owners
- home renters
- homeless
- near homeless
- runaways

### Income

- benefit recipients
- low-income

### Insurance

- underinsured
- uninsured

### Survivors

- abuse or neglect survivors
- adult cancer survivors
- all cancer survivors
- burn survivors
- childhood cancer survivors
- domestic violence survivors
- human trafficking survivors
- natural disaster survivors
- sexual assault survivors
- trauma survivors
- young adult cancer survivors

### Urgency

# What can we learn from our case study?

Claudia



Mother  
Age: 38  
Race: Latina  
Employment: Waitress  
Insurance: through employer

Patrick



Father  
Age: 41  
Race: White/Thai  
Employment: Auto detailer  
Insurance: marketplace plan

Ivonne



Grandmother  
Age: 63  
Race: Latina  
Employment: N/A  
Insurance: none

# What can we learn from our case study?

Tyler



Eldest daughter  
Age: 16  
Race: biracial  
Employment: student  
Insurance: Medicaid

Elliot



Son  
Age: 13  
Race: Latino  
Employment: student  
Insurance: Medicaid

Edith



Youngest daughter  
Age: 2  
Race: biracial  
Employment: N/A  
Insurance: Medicaid

# References

- Huecker MR, King KC, Jordan GA, et al. Domestic Violence. [Updated 2021 Aug 26]. In: StatPearls [Internet]. Treasure Island (FL): StatPearls Publishing; 2022 Jan-. Available from: <https://www.ncbi.nlm.nih.gov/books/NBK499891>
- National Coalition Against Domestic Violence (2020). Domestic violence. Retrieved from [https://assets.speakcdn.com/assets/2497/domestic\\_violence-2020080709350855.pdf?1596811079991](https://assets.speakcdn.com/assets/2497/domestic_violence-2020080709350855.pdf?1596811079991).
- Kansas Coalition Against Sexual & Domestic Violence (KCSDV) (2021). Kansas Sexual and Domestic Violence Service Providers Retrieved from Kansas [Sexual and Domestic Violence Organizations – Find on Map | Kansas Coalition Against Sexual and Domestic Violence \(KCSDV\)](#) .
- Smith M, Segal J HelpGuide (2021). Domestic violence and abuse. Retrieved from [Domestic Violence and Abuse - HelpGuide.org](#) .
- U.S. Department of Health and Human Services (2018). Get help | Office on Women's Health. womenshealth.gov. <https://www.womenshealth.gov/relationships-and-safety/get-help>.
- Get Help | RAINN" rainn.org, undefined. NaN <https://www.rainn.org/get-help>
- Get relationship help 24/7/365: text, call or chat now | love is respect.loveisrespect.org. <https://www.loveisrespect.org/get-relationship-help/> .
- 06\_105344\_IPV\_SVBooklet\_knuth.indd.cdc.gov. <https://www.cdc.gov/violenceprevention/pdf/ipv/ipvandsvscreening.pdf> .
- Social Services for 67601 (Hays, KS) | Aetna Better Health of Kansas.aetna-ks.auntbertha.com.[https://aetna-ks.auntbertha.com/search\\_results/67601](https://aetna-ks.auntbertha.com/search_results/67601).