



Mid-America (HHS Region 7)

MHTTC

Mental Health Technology Transfer Center Network
Funded by Substance Abuse and Mental Health Services Administration

Context Clues: Using Social Determinants of Health (SDOH) to Enhance Treatment: Transportation and Social Support

Christian Klepper, PsyD, LP

Faculty Trainer

Mid-America MHTTC



MUNROE-MEYER
INSTITUTE

SAMHSA

Substance Abuse and Mental Health
Services Administration



Transportation

Social Support

Health Outcomes

Mortality, Morbidity, Life Expectancy, Health Care Expenditures, Health Status, Functional Limitations

Economic Stability

- Employment
- Food Insecurity
- Housing Instability
- Poverty

Education Access and Quality

- Early Childhood Education and Development
- Enrollment in Higher Education
- High School Graduation
- Language and Literacy

Social and Community Context

- Civic Participation
- Discrimination
- Incarceration
- Social Cohesion

Health Care Access and Quality

- Access to Health Care
- Access to Primary Care
- Health Literacy

Neighborhood and Built Environment

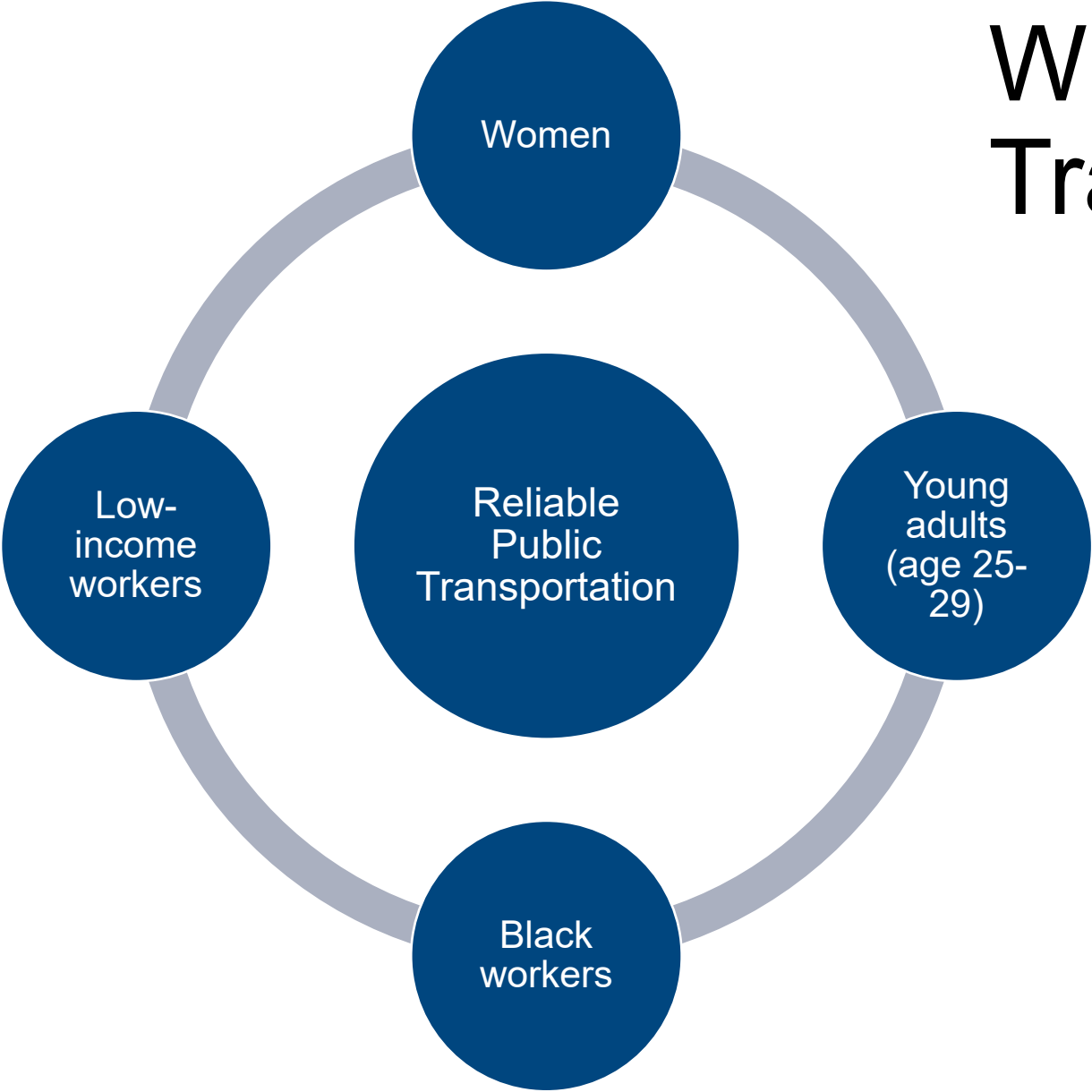
- Access to Foods that Support Healthy Eating Patterns
- Crime and Violence
- Environmental Conditions
- Quality of Housing

Transportation

Impacts a person's ability to access community resources

Affects individual, community, and environmental health

Who Uses Public Transportation?





25.5 million

People in the U.S. who have travel-limiting disabilities (U.S. Department of Transportation)

3.6 million

People who do not seek medical care due to transportation issues (American Hospital Association)

8.4 million

Seniors who rely on others for transportation (National Caregivers Library)

2.29 times

More health care visits for chronic care by individuals with a driver's license than those without in a rural setting (Arcury et al., 2005)

45 percent

Americans who have no access to public transportation (American Public Transportation Association)

Lack of reliable transportation impacts...

Access

- Healthcare
- Food
- Childcare
- Recreational activities
- Social support

Opportunities

- Employment
- Education
- Social connections
- Physical activity

Security

Transportation and Health Care

Up to 50% of patients indicate that transportation is a barrier to accessing care

White patients have more access than ethnic minorities, even after controlling for SES

Impact of telehealth?

Impact of COVID?

Barriers to Accessing Transportation

Lack of Access

Transportation Infrastructure	Transportation Costs	Vehicle Access	Distance and Time Burden	Policy
<ul style="list-style-type: none">• Availability, routes• Overcrowding• Maintenance• Safety	<ul style="list-style-type: none">• Cost of fares• Personal vehicle expenses such as insurance & maintenance• Credit card or bank account requirements	<ul style="list-style-type: none">• Personal vehicle• Access via social network	<ul style="list-style-type: none">• Long travel distances and wait times• Incorrect or inconvenient schedules	<ul style="list-style-type: none">• Budget cuts – shortages, route removal/changes, and strikes• Driver's license barriers• Underserved areas

Barriers to Accessing Transportation

Lack of Access

Transportation Infrastructure

- Availability, routes
- Overcrowding
- Maintenance
- Safety

Transportation Costs

- Cost of fares
- Personal vehicle expenses such as insurance & maintenance
- Credit card or bank account requirements

Vehicle Access

- Personal vehicle
- Access via social network

Distance and Time

- Long distances
- Limited service
- Limited service

Policy

- Budget cuts –
- Mortgages, route changes, routes
- License
- Reserved

Knowing the “WHY” is just as important as knowing the “WHAT”

Effects of Transportation

Most federal funding is for roads and highways

Negative effects on health (Robert Wood Johnson Foundation, 2012)

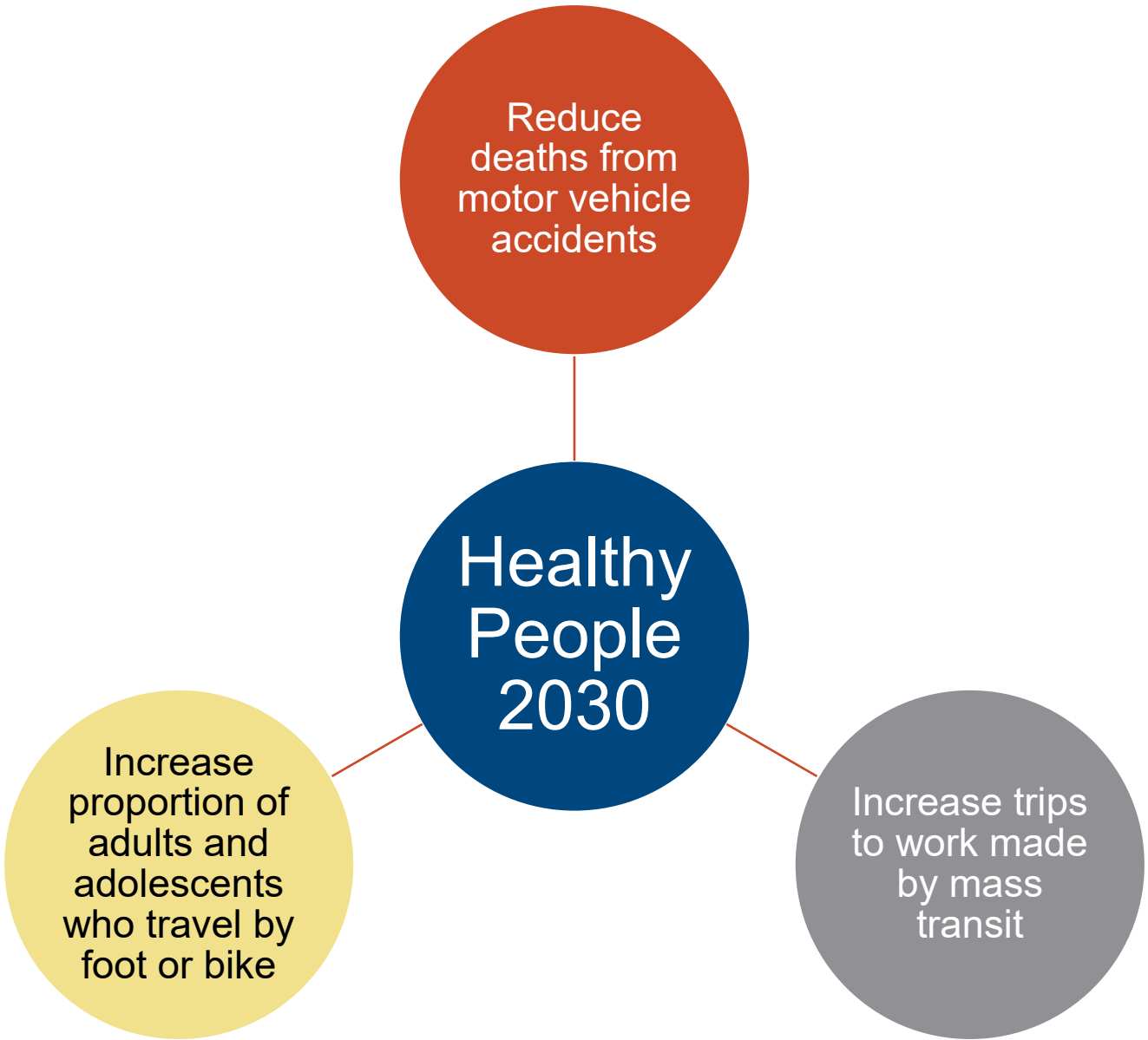
- Vehicle accidents
- Air pollution
- Physical inactivity

Segregation and disproportionate harm (O'Neill et al., 2003) – older people, people with disabilities, people of color, lower-income communities

Minimal funding for public transportation

For every \$1 invested in public transportation, approximately \$4-5 are generated in economic returns (American Public Transportation Association, 2020)

Fixing America's Surface Transportation (FAST) Act of 2015



Social Support – Relationships

Social cohesion

- Strength of relationship, sense of solidarity
- One indicator is social capital

Social capital

- Shared group resources
- Accessed through social networks

Social Networks

- Sources of multiple forms of social support

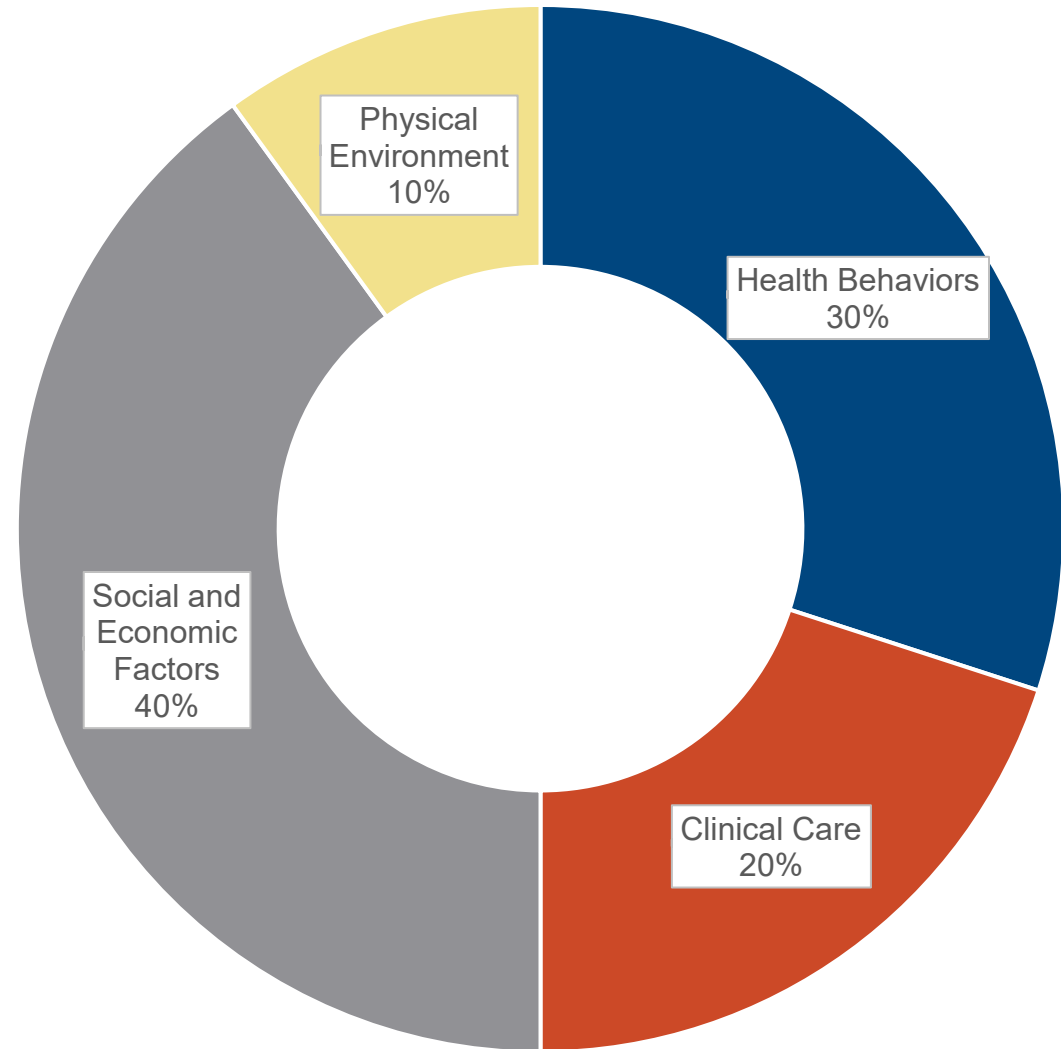
Social support

- Emotional support
- Esteem support
- Tangible/instrumental support

Social Support

- Limited social support is associated with mortality (Healthy People 2020)
 - Plays a role in the relationship between income inequality and mortality
- **Perceived social support** has a greater impact on health than actual social support (Helgeson, 1993)
 - Support may not be the right type or at the right time; may not be recognized by the recipient

Contributing Factors of Health



Assessment & Intervention



AAFP's Framework to Address SDOH

ASK

- About SDOH

IDENTIFY

- Resources in patients' communities that can help address SDOH

ACT

- To help connect patients with resources to address patients' SDOH

Screening

PRAPARE

Health-Related
Social Needs
(HRSN)
Screening Tool



Protocol for Responding to and Assessing Patient Assets, Risks, and Experiences

Protocol for Responding to and Assessing Patient Assets, Risks, and Experiences

14. In the past year, have you or any family members you live with been **unable** to get any of the following when it was **really needed**? Check all that apply.

Yes	No	Food	Yes	No	Clothing
Yes	No	Utilities	Yes	No	Child Care
Yes	No	Medicine or Any Health Care (Medical, Dental, Mental Health, Vision)			
Yes	No	Phone	Yes	No	Other (please write):
I choose not to answer this question					

15. Has lack of transportation kept you from medical appointments, meetings, work, or from getting things needed for daily living? Check all that apply.

<input type="checkbox"/>	Yes, it has kept me from medical appointments or
<input type="checkbox"/>	Yes, it has kept me from non-medical meetings, appointments, work, or from getting things that I need
<input type="checkbox"/>	No
<input type="checkbox"/>	I choose not to answer this question

Social and Emotional Health

16. How often do you see or talk to people that you care about and feel close to? (For example: talking to friends on the phone, visiting friends or family, going to church or club meetings)

<input type="checkbox"/>	Less than once a	<input type="checkbox"/>	1 or 2 times a week
<input type="checkbox"/>	3 to 5 times a week	<input type="checkbox"/>	5 or more times a
<input type="checkbox"/>	I choose not to answer this question		

Accountable Health Communities (AHC) Health-Related Social Needs (HRSN) Screening Tool

Developed by the Centers for Medicare
and Medicaid Services (CMS)

5 Core Domains

1. Housing instability
2. Food insecurity
3. **Transportation problems**
4. Utility help needs
5. **Interpersonal safety**

8 Supplemental Domains

1. Financial strain
2. Employment
3. **Family and community support**
4. Education
5. Physical activity
6. Substance use
7. Mental health
8. Disabilities

Transportation

5. In the past 12 months, has lack of reliable transportation kept you from medical appointments, meetings, work or from getting things needed for daily living?⁶
- Yes
 - No



Accountable Health Communities (AHC) Health-Related Social Needs (HRSN) Screening Tool

Family and Community Support

13. If for any reason you need help with day-to-day activities such as bathing, preparing meals, shopping, managing finances, etc., do you get the help you need?¹¹

- I don't need any help
- I get all the help I need
- I could use a little more help
- I need a lot more help

14. How often do you feel lonely or isolated from those around you?¹²

- Never
- Rarely
- Sometimes
- Often
- Always

Safety

Because violence and abuse happens to a lot of people and affects their health we are asking the following questions.⁸

7. How often does anyone, including family and friends, physically hurt you?

- Never (1)
- Rarely (2)
- Sometimes (3)
- Fairly often (4)
- Frequently (5)

8. How often does anyone, including family and friends, insult or talk down to you?

- Never (1)
- Rarely (2)
- Sometimes (3)
- Fairly often (4)
- Frequently (5)

9. How often does anyone, including family and friends, threaten you with harm?

- Never (1)
- Rarely (2)
- Sometimes (3)
- Fairly often (4)
- Frequently (5)

10. How often does anyone, including family and friends, scream or curse at you?

- Never (1)
- Rarely (2)
- Sometimes (3)
- Fairly often (4)
- Frequently (5)

[AAFP Social Needs Screening Tool](#)

Do you put off or neglect going to the doctor because of distance or transportation?

Yes/No

[Accountable Health Communities Health-Related Social Needs Screening Tool](#)

In the past 12 months, has lack of reliable transportation kept you from medical appointments, meetings, work or from getting things needed for daily living?

Yes/ No

[Arlington Screening Tool](#)

Within the past 12 months, has lack of transportation kept you from medical appointments, getting your medicines, non-medical meetings or appointments, work, or from getting things that you need?

Yes/ No

[Boston Medical Center-Thrive Screening Tool](#)

Do you have trouble getting transportation to medical appointments?

Yes/ No

[HealthBegins Upstream Risk Screening Tool](#)

How often is it difficult to get transportation to or from your medical or follow-up appointments?

Does not apply

Never

Sometimes

Often

Always

[Health Leads Social Needs Screening Toolkit](#)

In the last 12 months, have you ever had to go without health care because you didn't have a way to get there?

Yes/No

[North Carolina Medicaid Screening Tool](#)

Within the past 12 months, has a lack of transportation kept you from medical appointments or from doing things needed for daily living?

Yes/ No

[PRAPARE](#)

Has lack of transportation kept you from medical appointments, meetings, work, or from getting things needed for daily living? Check all that apply.

Yes, it has kept me from medical appointments or from getting my medications

Yes, it has kept me from non-medical meetings, appointments, work, or from getting things that I need

No

I choose not to answer this question

[WellRx Toolkit](#)

Do you have trouble finding or paying for a ride?

[Kaiser Permanente's Your Current Life Situation Survey](#)

In the past 3 months, did you have trouble paying for any of the following? (Select ALL that apply)

Transportation

Has lack of transportation kept you from medical appointments or from doing things needed for daily living? (Select ALL that apply)

Kept me from medical appointments or from getting medications

Kept me from doing things needed for daily living

Not a problem for me

ICD-10 Z-Codes

	Other Problems Related to Primary Support Group, Including Family Circumstances (Z63)
	Z63.0-1 Problems in relationship with spouse or partner/in-laws
	Z63.3-4 Absence/Disappearance and death of family member
Problems Related to Employment and Unemployment (Z56)	Z63.5 Disruption of family by separation and divorce
Z56.6 Other physical and mental strain related to work	Z63.7X Other stressful life events affecting family and household
Z56.8-9 Other/unspecified problems related to employment	Z63.8-9 Other/unspecified problem related to primary support group
Problems related to Housing and Economic Circumstances (Z59)	Problems Related to Other Psychosocial Circumstances (Z65)
Z59.4 Lack of adequate food and safe drinking water	Z65.0 Conviction in civil and criminal proceedings without imprisonment
Z59.5 Extreme poverty	Z65.2 Problems related to release from prison
Z59.6 Low income	Z54.3 Problems related to other legal circumstances
Z59.7 Insufficient social insurance and welfare support	Problems Related to Life Management Difficulty (Z73)
Z59.8-9 Other/unspecified problems related to housing and economic circumstances	Z73.2 Lack of relaxation and leisure
Problems Related to Social Environment (Z60)	Z73.3 Stress, not elsewhere classified
Z60.2 Problems related to living alone	Z73.4 Inadequate social skills, not elsewhere classified
Z60.4 Social exclusion and rejection	Z73.5 Social role conflict, not elsewhere classified
Problems Related to Upbringing (Z62)	Family History of Mental and Behavioral Disorders (Z81.X)
Z62.0 Inadequate parental supervision and control	Personal History of Certain Other Diseases (Z86)
Z62.2X Upbringing away from parents	Z86.5X Personal history of mental and behavioral disorders
	Personal Risk Factors, Not Elsewhere Classified (Z91)
	Z91.1X Patient's noncompliance with medical treatment and regimen

ICD-10 Z-Codes

Problems Related to Employment and Unemployment (Z56)

Z56.6 Other physical and mental strain related to work

Z56.8-9 Other/unspecified problems related to employment

Problems related to Housing and Economic Circumstances (Z59)

Z59.4 Lack of adequate food and safe drinking water

Z59.5 Extreme poverty

Z59.6 Low income

Z59.7 Insufficient social insurance and welfare support

Z59.8-9 Other/unspecified problems related to housing and economic circumstances

Problems Related to Social Environment (Z60)

Z60.2 Problems related to living alone

Z60.4 Social exclusion and rejection

Problems Related to Upbringing (Z62)

Z62.0 Inadequate parental supervision and control

Z62.2X Upbringing away from parents

Support from parent/
guardian for
adult children

Cues to ask
about
transportation

Why?

Other Problems Related to Primary Support Group, Including Family Circumstances (Z63)

Z63.0-1 Problems in relationship with spouse or partner/in-laws

Z63.3-4 Absence/Disappearance and death of family member

Z63.5 Disruption of family by separation and divorce

Z63.7X Other stressful life events affecting family and household

Z63.8-9 Other/unspecified problem related to primary support group

Problems Related to Other Psychosocial Circumstances (Z65)

Z65.0 Conviction in civil and criminal proceedings without imprisonment

Z65.2 Problems related to release from prison

Z54.3 Problems related to other legal circumstances

How does this
affect their
relationships
& mobility?

Problems Related to Life Management Difficulty (Z73)

Z73.2 Lack of relaxation and leisure

Due to limited
transportation
or lack of
social
support?

Z73.3 Stress, not elsewhere classified

Z73.4 Inadequate social skills, not elsewhere classified

Z73.5 Social role conflict, not elsewhere classified

Family History of Mental and Behavioral Disorders (Z81.X)

Personal History of Certain Other Diseases (Z86)

Z86.5X Personal history of mental and behavioral disorders

Personal Risk Factors, Not Elsewhere Classified (Z91)

Z91.1X Patient's noncompliance with medical treatment and regimen

ICD-10 Z-Codes

Problems Related to Employment and Unemployment (Z56)

Z56.6 Other physical and mental strain related to work

Z56.8-9 Other/unspecified problems related to employment

Problems related to Housing and Economic Circumstances

Z59.4 Lack of adequate food and safe drinking water

Z59.5 Extreme poverty

Z59.6 Low income

Z59.7 Insufficient social insurance and welfare support

Z59.8-9 Other/unspecified problems related to housing and economic circumstances

Problems Related to Social Environment (Z60)

Z60.2 Problems related to living alone

Z60.4 Social exclusion and rejection

Problems Related to Upbringing (Z62)

Z62.0 Inadequate parental supervision and control

Z62.2X Upbringing away from parents

Support from parent/guardian for adult children

Other Problems Related to Primary Support Group, Including Family Circumstances (Z63)

Z63.0-1 Problems in relationship with spouse or partner/in-laws

Z63.3-4 Absence, disappearance and death of family member

Z63.5 Disruption of family by separation and divorce

Z63.6-7 Other stressful life events affecting family and household

Z63.8-9 Unspecified problem related to primary support group

Problems Related to Other Psychosocial Circumstances (Z65)

Z65.0-1 Legal proceedings without imprisonment

Z65.2-3 Release from prison

Z65.4-5 Other legal circumstances

Problems Related to Management Difficulty (Z73)

Z73.0-1 Work and leisure

Z73.2-3 Not elsewhere classified

Z73.4-5 Inadequate social skills, not elsewhere classified

Z73.6-7 Social role conflict, not elsewhere classified

Family History of Mental and Behavioral Disorders (Z81.X)

Personal History of Certain Other Diseases (Z86)

Z86.5X Personal history of mental and behavioral disorders

Personal Risk Factors, Not Elsewhere Classified (Z91)

Z91.1X Patient's noncompliance with medical treatment and regimen

Importance of tracking Z-codes to identify patterns among patient populations

How does this affect their relationships & mobility?

Due to limited transportation or lack of social support?



Case Study

- Mother – Claudia
- Father – Patrick
- Grandmother – Ivonne
- Daughter – Tyler (age 16)
- Son – Elliot (age 13)
- Daughter – Edith (age 2)



Risk Factors Related to Transportation Access

Income

Two employed adults and four unemployed household members; have not applied for SSI for son

Legal

Father on diversion with suspended license due to DUI

Ethnicity

Latinx, Biracial (White/Thai)

Seniors

Grandmother (age 63)

Adults with disabilities

Grandma has disability due to a stroke, requires assistance for ADLs; mom had a mild TBI

Issues Related to Transportation Access

Access to healthcare

Access to education

Personal
transportation

Access to
social
connections

Son has
regular out-
of-state
medical
appointments

Mother is the
only adult
who drives

Daughter is
preparing for
college;
wants to live
independently

Father is in
auto
mechanics
program

Have a
functioning
van (minor
mechanical
issues), but 2
adults are
unable to use
it

Grandmother
recently
moved in with
family –
change in
social
supports

Issues Related to Transportation Access

Access to healthcare

Access to education

Personal transportation

Access to social connections

How does the family get to these appointments?
Can we help?

Son has regular out-of-state medical appointments

Mother is the only adult who drives

Daughter is preparing for collage; wants to live independently

Father is in auto mechanics program

Have a functioning van (minor mechanical issues), but 2 adults are unable to use it

Grandmother recently moved in with family – change in social supports

Issues Related to Transportation Access

Access to healthcare

Access to education

Personal transportation

Access to social connections

How does the family get to these appointments?
Can we help?

Son has regular out-of-state medical appointments

Mother is the only adult who drives

Daughter is preparing for college; lives independently

Father is in auto mechanics program

Have a functioning van (minor mechanical issues), but 2 adults are unable to use it

Grandmother recently moved in with family – change in social supports

Added responsibilities for mother. Impact on ability to maintain employment, personal social connections?

Issues Related to Transportation Access

Access to healthcare

Access to education

Personal transportation

Access to social connections

How does the family get to these appointments?
Can we help?

Tangible support vs. emotional support

Son has regular out-of-state medical appointments

Mother is the only adult who drives

Daughter is preparing for college; lives independently

Father is in auto mechanics program

Have a functioning van (minor mechanical issues), but 2 adults are unable to use it

Grandmother recently moved in with family – change in social supports

Added responsibilities for mother. Impact on ability to maintain employment, personal social connections?

Issues Related to Transportation Access

Access to healthcare

Can they consistently get to classes?

Access to education

Personal transportation

Access to social connections

Tangible support vs. emotional support

How does the family get to these appointments? Can we help?

Son has regular out-of-state medical appointments

Mother is the only adult who drives

Added responsibilities for mother. Impact on ability to maintain employment, personal social connections?

Daughter is preparing for college; lives independently

Father is in auto mechanics program

Have a functioning van (minor mechanical issues), but 2 adults are unable to use it

Grandmother recently moved in with family – change in social supports

Unknowns Related to Transportation Access

Access to public transportation

Urban vs. Rural

Accessibility of transportation

Grandmother has limited mobility – how accessible is family's van?

Unknowns Related to Transportation Access

Access to public transportation

Urban vs. Rural

Accessibility of transportation

Grandmother has limited mobility – how accessible is family's van?

Do they need an accessible vehicle? Can we help them get one (if needed)?

Risk Factors Related to Social Support

Family

Religious
community

LGBTQ+

Seniors

Adults with
disabilities

Two-parent,
multi-
generational
family home

Grandmother
attends church

Eldest child
(Tyler)
identifies as
bisexual and
uses
they/them
pronouns

Grandmother
(age 63)

Grandma has
disability due
to a stroke,
requires
assistance for
ADLs; mom
had a mild TBI

Issues Related to Social Support

Family

Religious
community

LGBTQ+

Mental
health
history

Seniors

Adults with
disabilities

Two-parent,
multi-
generational
family home

Grandmother
attends
church

Eldest child
(Tyler)
identifies as
bisexual and
uses
they/them
pronouns

Mother and
Tyler have
had MH
concerns

Grandmother
(age 63)

Grandma has
disability due
to a stroke,
requires
assistance
for ADLs;
mom had a
mild TBI

Issues Related to Social Support

Family

Religious community

LGBTQ+

Mental health history

Seniors

Adults with disabilities

Two-parent, multi-generational family home

Grandmother

Are they out? If so, to whom?
Does the family accept them?
Use their correct pronouns?

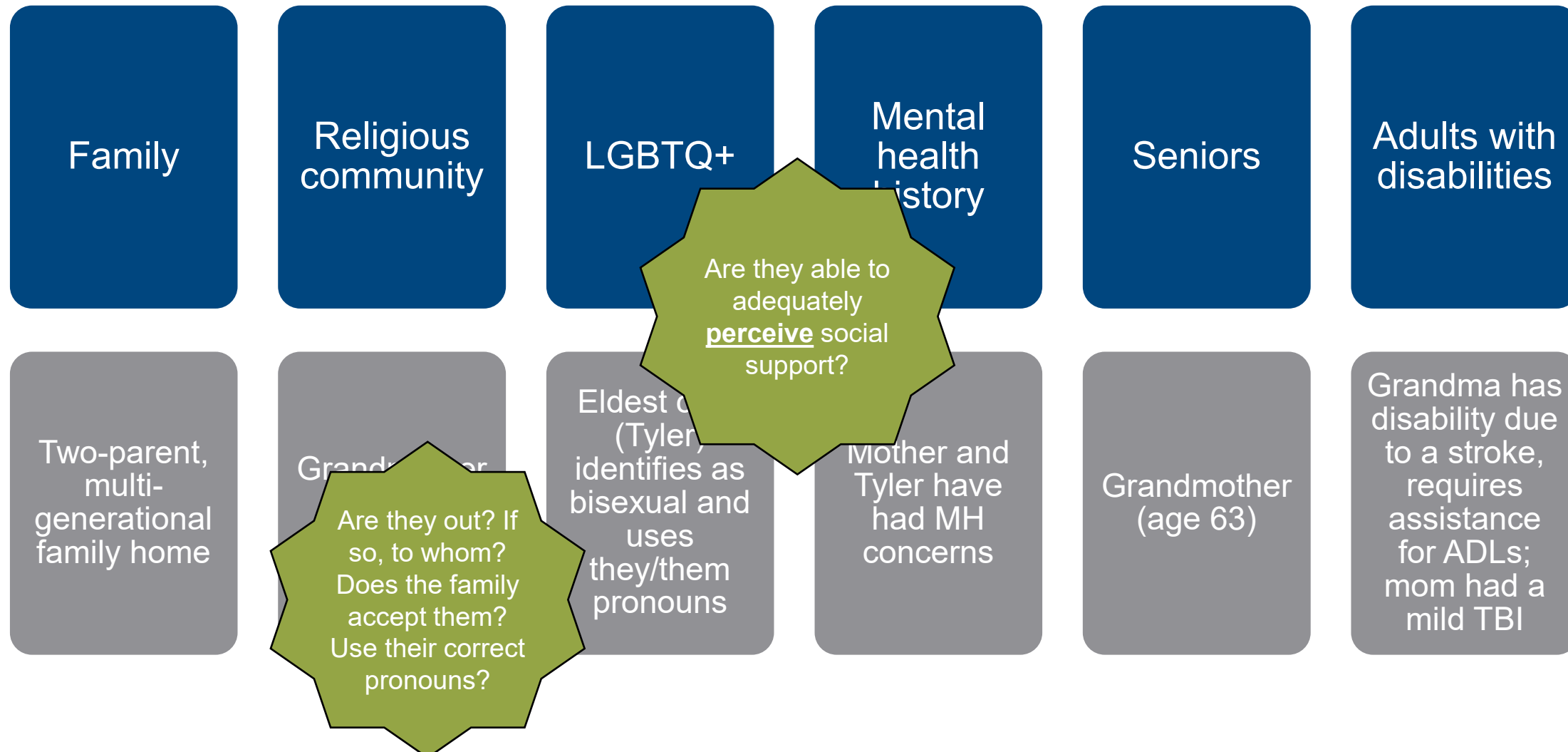
Eldest child (Tyler) identifies as bisexual and uses they/them pronouns

Mother and Tyler have had MH concerns

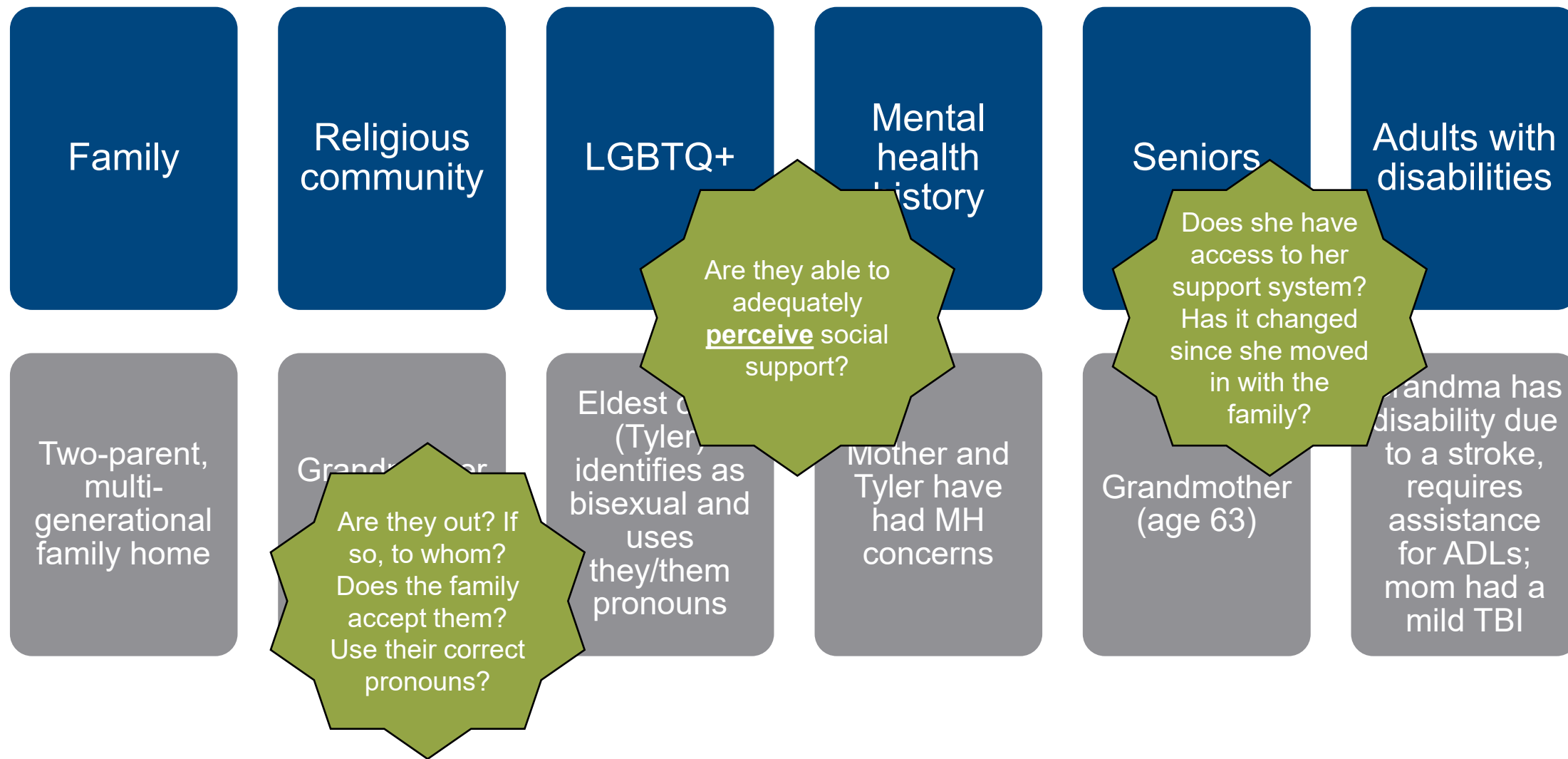
Grandmother (age 63)

Grandma has disability due to a stroke, requires assistance for ADLs; mom had a mild TBI

Issues Related to Social Support



Issues Related to Social Support



Unknowns Related to Social Support

Family

Child with
medical condition

Extended family

Support for caregiver(s)
and child in managing a
chronic condition

Using Aunt Bertha



Find **food assistance, help paying bills,** and other free or reduced cost programs, including new programs for the COVID-19 pandemic:

Enter your zip code

ZIP

6,924,399 people use it (and growing daily)

findhelp.org

ZIP or keyword or program name Find food assistance, help paying bills, and other free or reduced cost programs in the Wichita, KS 67202 area , including COVID-19 pandemic:

Select Language ▼

- FOOD
- HOUSING
- GOODS
- TRANSIT
- HEALTH
- MONEY
- CARE
- EDUCATION

↑

1,826 programs
in the Wichita, KS 67202 area

Choose from the categories above and browse local programs, or search for any service. Select Language ▼ to translate the site.

This curated database of resources is provided by findhelp, a Public Benefit Corporation.



How to use Aunt Bertha

ZIP or keyword or program name



Find food assistance, help paying bills, and other free or reduced cost programs in the Wichita, KS 67202 area , including new programs for the COVID pandemic:

Select Language



FOOD



HOUSING



GOODS



TRANSIT



HEALTH



MONEY



CARE



EDUCATION



WORK



LEGAL

Help Pay For Transit



Transportation - All (33)

Transportation



[transportation for healthcare \(21\)](#)



Choose the category of assistance

I chose Transit & Transportation

for program name



FOOD



HOUSING



GOODS



TRANSIT



HEALTH



MONEY



CARE



EDUCATION



WORK



LEGAL

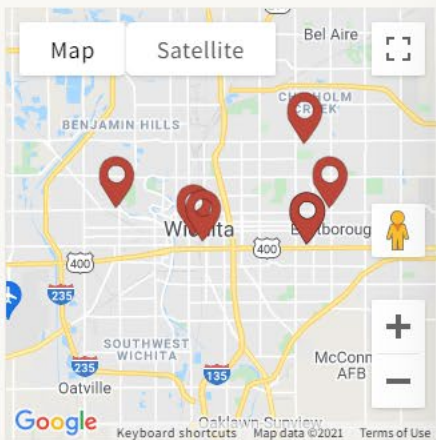
Wichita, KS (67202) / transit / transportation < 1 - 10 of 33 >

Sort by RELEVANCE CLOSEST

Personal Filters

Program Filters

Income Eligibility



Notice out-of-date information or see a program you work for? Click Suggest to share an update or claim your program listing to get access to free tools and data.

Supported Employment

by Mental Health Association of South Central Kansas (MHASCK)

Supported Employment Specialists work closely with clients and employers to ensure employment is a positive and successful experience. There is a strong focus on job matching and securing long...

Main Services: clothes for work, transportation, counseling, help find work, support network, supported employment, skills & training, interview training, resume development, skills assessment, job placement

Serving: adults 18+, all mental health

Next Steps:

Call 316-685-1821 ext.285.

3.98 miles (serves your local area)

555 N Woodlawn St, Wichita, KS 67208

Open Now : 8:00 AM - 5:00 PM

MORE INFO



SAVE



SHARE



NOTES



SUGGEST

SEE NEXT STEPS

ADA Paratransit Services

by Wichita Transit

ADA Paratransit Services is a door-to-door bus service provided by Wichita Transit for customers with disabilities or health conditions that prevent them from using the fixed route bus service for...

Main Services: transportation

Serving: all ages, all disabilities, developmental disability, physical disability, intellectual disability, limited mobility, visual impairment

Next Steps:

Contact or go to the nearest location, call 316-352-4828 or apply on their website.

0.13 miles (serves your local area)

National Resources



<https://www.nadtc.org/>



Social Determinants of Health GUIDE TO SOCIAL NEEDS SCREENING

https://www.aafp.org/dam/AAFP/documents/patient_care/everyone_project/hops19-physician-guide-sdoh.pdf



<https://nationalcenterformobilitymanagement.org/>



Questions and Information to Share with Providers When Considering Transportation Options

When preparing to choose a public or private transportation option for yourself, a family member, or a client, you'll want to select an option that is reliable and best-suited for the trip.

Be prepared to ask and answer the following questions.

1. **Service Area and Trip Type:** Many transportation options have a defined service area and set hours of operation and days of the week that should be considered when planning your trip. A transportation service may limit services by type of trip. For example, some services may only provide rides to doctor appointments.

<http://www.nadtc.org/wp-content/uploads/NADTC-Preparing-to-Talk-to-a-Transportation-Provider-Information-Sheet-FINAL.pdf>

National Resources

Patients' medical insurance

May provide non-emergency medical and/or non-medical transportation
Call insurance company to inquire about benefits.

211 Helpline Center

Community information and referrals to social services for everyday needs (including transportation)
www.211.org
Dial 211 from any phone

Connect2Affect

Online directory (created by AARP) to connect patients with resources (including transportation)
connect2affect.org

Eldercare and Area Agencies on Aging

Locating trustworthy, local support resources (including transportation)
www.eldercare.acl.gov
1-800-677-1116 (TTY 711), Monday-Friday, 8am-7pm, Central time

Local Resources



Transportation

If you need transportation



Aetna Better Health® of Kansas

Emergencies

Non-Emergency Medical Transportation (NEMT)

You can receive other transportation services through Aetna Better Health of Kansas. Some services like mileage reimbursement, lodging and meals may also be reimbursed with authorization. To find out more about getting a ride to your doctor visits, mileage reimbursement, or if you have any problems with the service you receive, you can call [Access2Care](#) at **1-866-252-5634, (TTY 711)**. If there is a need for an overnight stay or meals, please call Aetna Better Health of Kansas at **1-855-221-5656, (TTY 711)** and ask speak with your assigned service coordinator.

Transportation appointments must be scheduled three (3) days in advance. Please have the following information when calling to schedule your transportation:

- Name of the doctor
- Address
- Telephone number
- Time of appointment
- Type of transportation needed (e.g., regular car, wheelchair-accessible van)

If you have an urgent need for transportation (you need a ride sooner than three (3) days), contact Member Services at **1-855-221-5656, (TTY: 711)** to request assistance with the urgent request.

RideshareKC is dedicated to helping individuals and employers find the commute solutions that make the most sense for them.

Take aways



Connected
to other
factors



Assess
regularly



Use the Ask,
Identify, Act
framework



Be familiar
with
resources



References

American Public Transportation Association. (2020). Economic impact of public transportation invest: 2020 Update. Access at <https://www.apta.com/wp-content/uploads/APTA-Economic-Impact-Public-Transit-2020.pdf>

Arcury, T.A., Preisser, J.S., Gesler, W.M., & Powers, J.M. (2005). Access to transportation and health care utilization in a rural region. *Journal of Rural Health, 21*(1), 31-38.

Health Research & Educational Trust. (2017, November). Social determinants of health series: Transportation and the role of hospitals. Health Research & Educational Trust. Accessed at www.aha.org/transportation

Helgeson, V.S. (1993). Two important distinctions in social support: Kind of support and perceived versus received. *Journal of Applied Social Psychology, 23*(10), 825-845.

Hood, C.M., Gennuso, K.P., Swain, G.R., & Catlin, B.B. (2016). Country health rankings: Relationships between determinant factors and health outcomes. *American Journal of Prevention Medicine, 50*(2), 129-135.

National Caregivers Library, Transportation and the Elderly, <http://www.caregiverslibrary.org/caregivers-resources/grp-transportation/transportation-and-the-elderly-article.aspx>

O'Neill, M.S., Jerrett, M., Kawachi, I., Levy, J.I., Cohen, A.J., Gouveia, N., Wilkinson, P., Fletcher, T., Cifuentes, L., Schwartz, J., & Workgroup of Air Pollution and Socioeconomic Conditions. Health, wealth, and air pollution: Advancing theory and methods. *Environmental Health Perspectives, 111*(16), 1861-1870.

"Public Transportation In The US: A Driver Of Health And Equity, " Health Affairs Health Policy Brief, July 29, 2021. DOI: 10.1377/hpb20210630.810356

Robert Wood Johnson Foundation (2012, October). How does transportation affect health? Health Policy Snapshot Series. <https://www.rwjf.org/en/library/research/2012/10/how-does-transportation-impact-health-.html>

Syed, S.T., Gerber, B.S., & Sharp, L.K. (2013). Traveling towards disease: Transportation barriers to health care access. *Journal of Community Health, 38*(5), 976-993.

U.S. Department of Transportation. (2020, July 29). Accessibility. Accessed at <https://www.transportation.gov/accessibility>



Mid-America (HHS Region 7)

MHTTC

Mental Health Technology Transfer Center Network
Funded by Substance Abuse and Mental Health Services Administration

Connect With Us

JOIN OUR MAILING LIST:



FOLLOW US ON SOCIAL MEDIA:



/MidAmericaMHTTC



@MidAmericaMHTTC



/company/MidAmericaMHTTC

EMAIL: midamerica@mhttcnetwork.org

WEBSITE: mhttcnetwork.org/midamerica



MUNROE-MEYER
INSTITUTE

SAMHSA

Substance Abuse and Mental Health
Services Administration