



# Leadership Institute Community of Practice

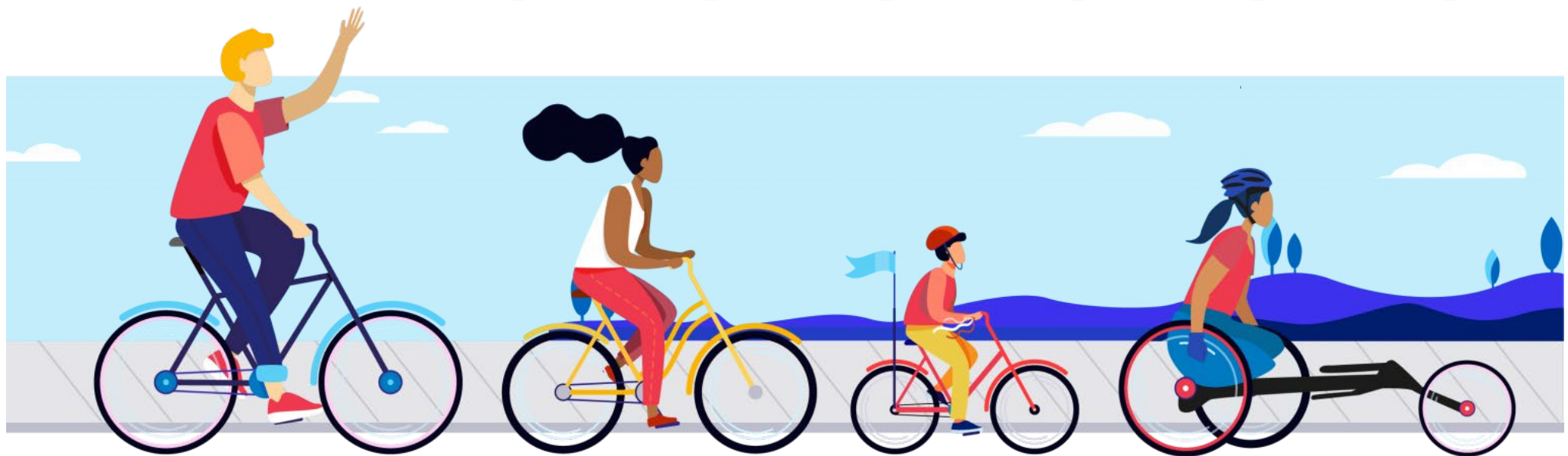
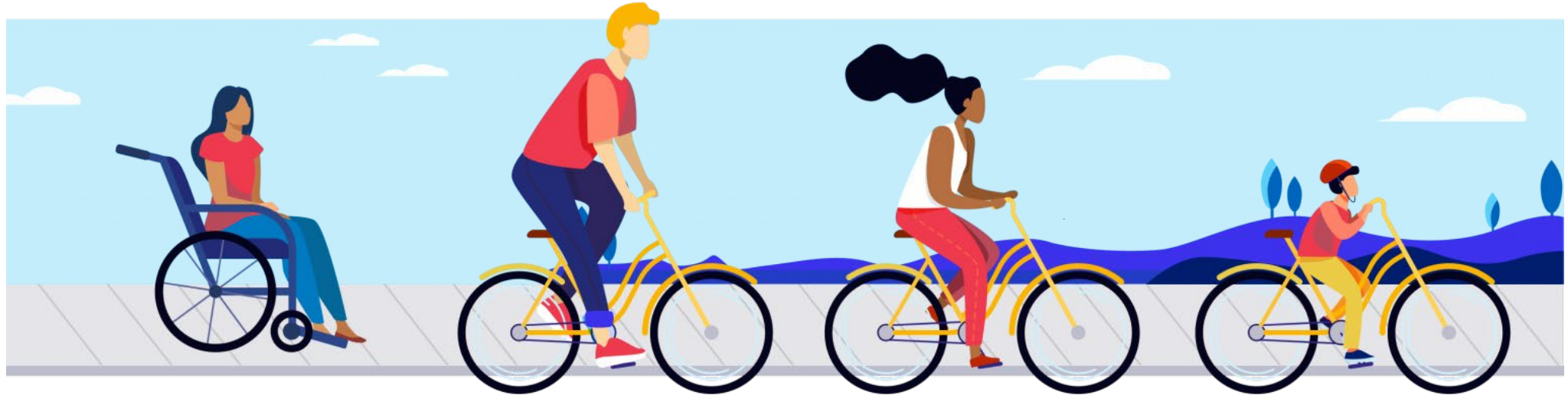
---

Session Topic: Community of Practice: Equity and Inclusion in Behavioral Health Work



**Shawn Sorrell**  
Hennepin County Minnesota  
Manager Diversity, Equity and Inclusion

# Equality vs Equity



# Treatment Courts





—

# Advocacy for those harmed

---





A word cloud containing various terms related to forgiveness and restorative justice. The most prominent words are **Forgiveness** (in large blue font), **process** (in large orange font), **feelings** (in large grey font), and **attitude** (in large grey font). Other visible words include "forgive", "action", "apology", "relationship", "intentional", "emotions", "forgiveness", "ability", "willingness", "restorative", "practical", "change", "excusing", "different", "just", "dead", "undergoes", "pardonable", "lets", "regarding", "psychological", "offer", "acknowledgment", "justice", "believe", "loan", "concept", "religious", "person", "reconciliation", "ask", "obligation", "forgiver", "social", "debts", "awareness", "forgiven", "wishes", "negative", "need", "giving up", "including", "necessary", "removing", "expectations", "conscience", "relationship", "emotions", "form", "wishes", "negative", "need", "giving up", "including", "necessary", "removing", "expectations", "conscience", "relationship", "emotions", "form", "wishes", "negative", "need", "giving up", "including", "necessary", "removing", "expectations", "conscience", "relationship", "emotions", "form".

# Restorative Justice





# Leadership Institute Community of Practice

---

## Session Topic: Community of Practice: Equity and Inclusion in Behavioral Health Work



**Shawn Sorrell**  
Hennepin County Minnesota  
Manager Diversity, Equity and Inclusion