



WELCOME!
WE WILL BEGIN MOMENTARILY

**BEST PRACTICES FOR SUCCESSFUL REENTRY
FROM CRIMINAL JUSTICE SETTINGS FOR PEOPLE
LIVING WITH MENTAL HEALTH CONDITIONS
AND/OR SUBSTANCE USE DISORDERS**



**BOLD
THINKERS
DRIVING
REAL-WORLD
IMPACT**



MHTTC

SAMHSA

Substance Abuse and Mental Health
Services Administration

Housekeeping Items

- All participants are muted upon entry and this session is being recorded.
 - If you have a question for the presenters, please enter it into the Q&A box.
 - If you need tech help, please enter “tech help” into the chat box.
- To follow along with the slides, please access them [here](#).
- At the end of today’s webinar, please complete a **brief** survey.
- Following the session, you will receive a follow-up email with the slides, recording, and information on how to access your certificate of attendance; must attend at least 30 minutes.

- This event is closed captioned!



- Follow us on social media:

@MHTTCNetwork



Disclaimer

This presentation was prepared for the MHTTC Network under a cooperative agreement from the Substance Abuse and Mental Health Services Administration (SAMHSA). All material appearing in this presentation, except that taken directly from copyrighted sources, is in the public domain and may be reproduced or copied without permission from SAMHSA or the authors. Citation of the source is appreciated. Do not reproduce or distribute this presentation for a fee without specific, written authorization from the MHTTC Network Coordinating Office. This presentation will be recorded and posted on our website.

At the time of this presentation, Dr. Miriam E. Delphin-Rittmon served as Assistant Secretary for Mental Health and Substance Use in the U.S. Department of Health and Human Services (DHHS) and the Administrator of SAMHSA. The opinions expressed herein are the views of the speakers, and do not reflect the official position of DHHS or SAMHSA. No official support or endorsement of DHHS, SAMHSA, for the opinions described in this presentation is intended or should be inferred.

The MHTTC Network uses affirming, respectful and recovery-oriented language in all activities. That language is:

STRENGTHS-BASED AND HOPEFUL

INCLUSIVE AND ACCEPTING OF DIVERSE CULTURES, GENDERS, PERSPECTIVES, AND EXPERIENCES

HEALING-CENTERED AND TRAUMA-RESPONSIVE

INVITING TO INDIVIDUALS PARTICIPATING IN THEIR OWN JOURNEYS

PERSON-FIRST AND FREE OF LABELS

NON-JUDGMENTAL AND AVOIDING ASSUMPTIONS

RESPECTFUL, CLEAR AND UNDERSTANDABLE

CONSISTENT WITH OUR ACTIONS, POLICIES, AND PRODUCTS

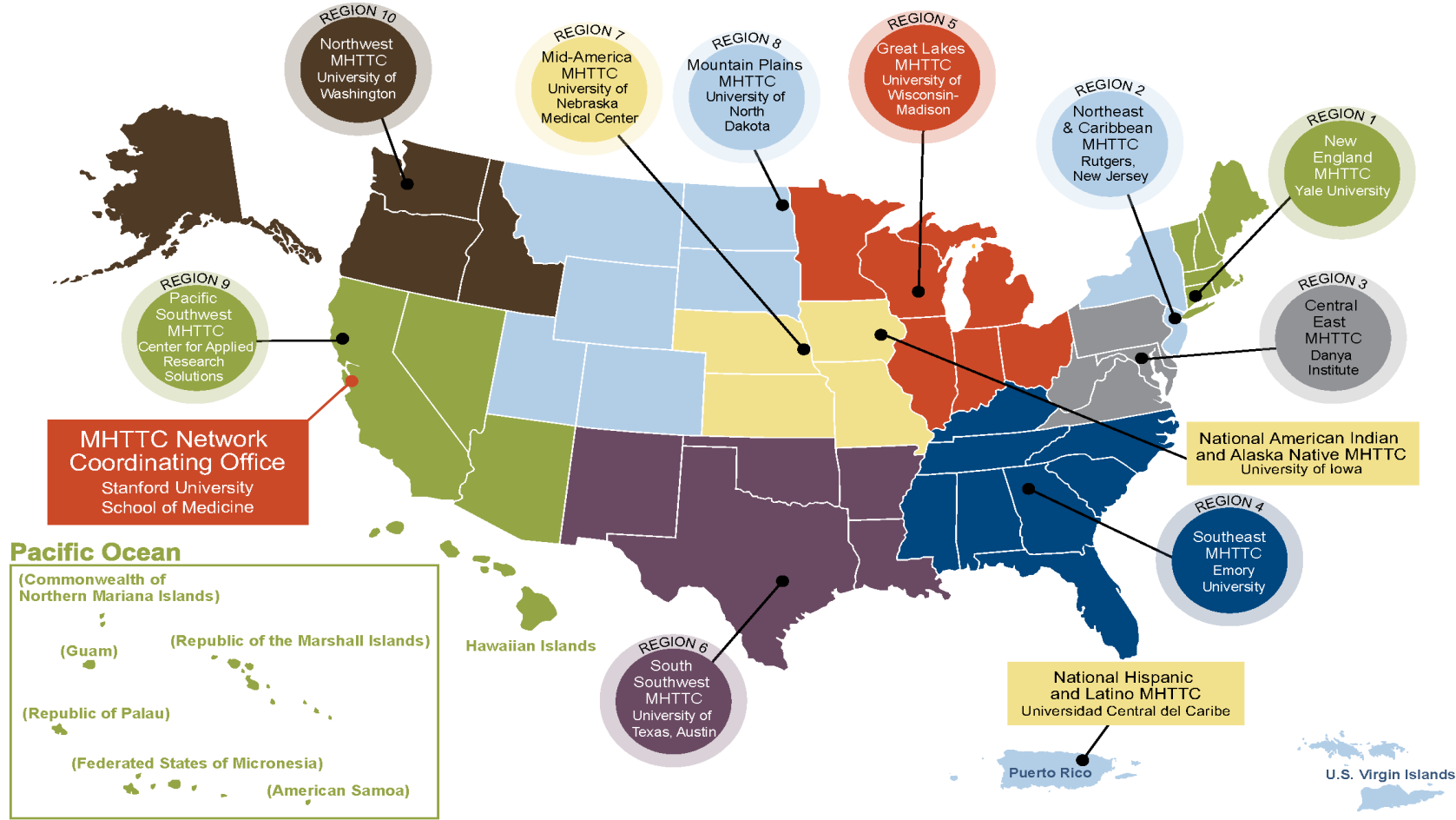
Connect with Your MHTTC at www.mhttcnetwork.org



MHTTC

Mental Health Technology Transfer Center Network
Funded by Substance Abuse and Mental Health Services Administration

MHTTC Network



National Mental Health and Substance Use Policy Laboratory

Best Practices for Successful Reentry From Criminal Justice Settings for People Living With Mental Health Conditions and/or Substance Use Disorders

September 7, 2023

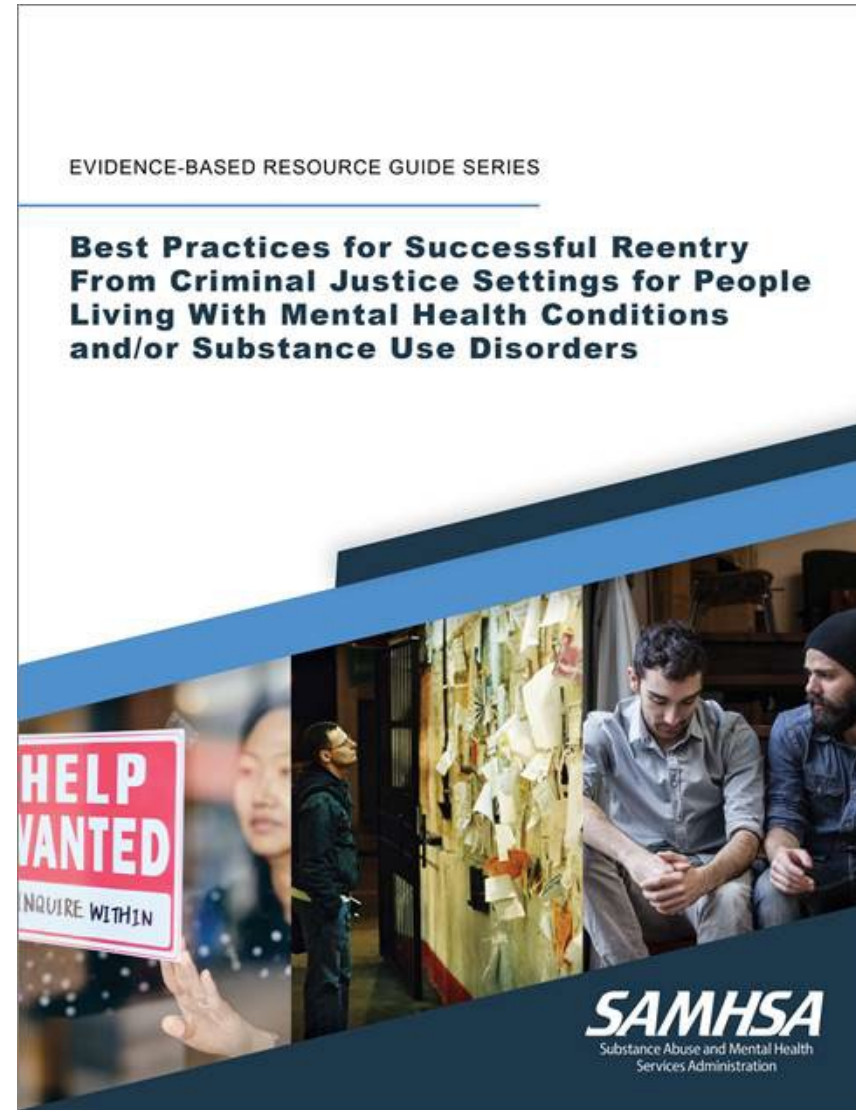


SAMHSA
Substance Abuse and Mental Health
Services Administration

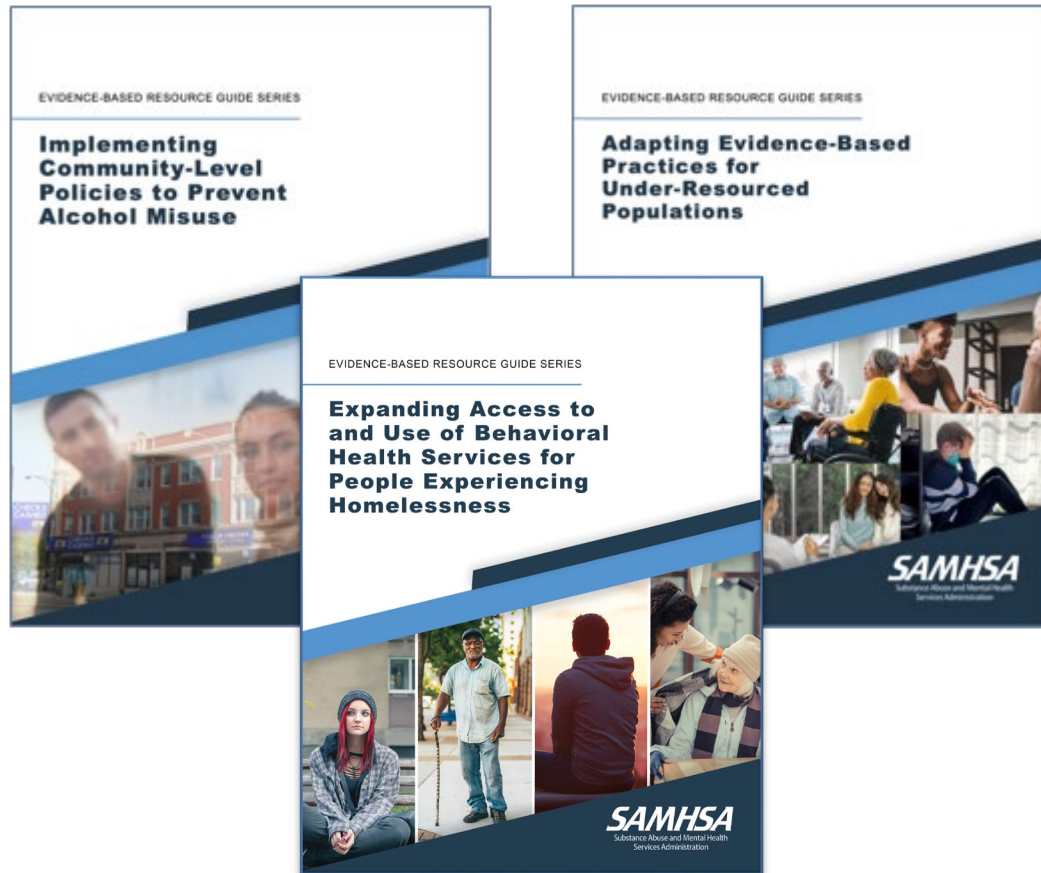
Welcome



Dr. Joseph Bullock
Senior Public Health Advisor
SAMHSA



Evidence-Based Resource Center Guides

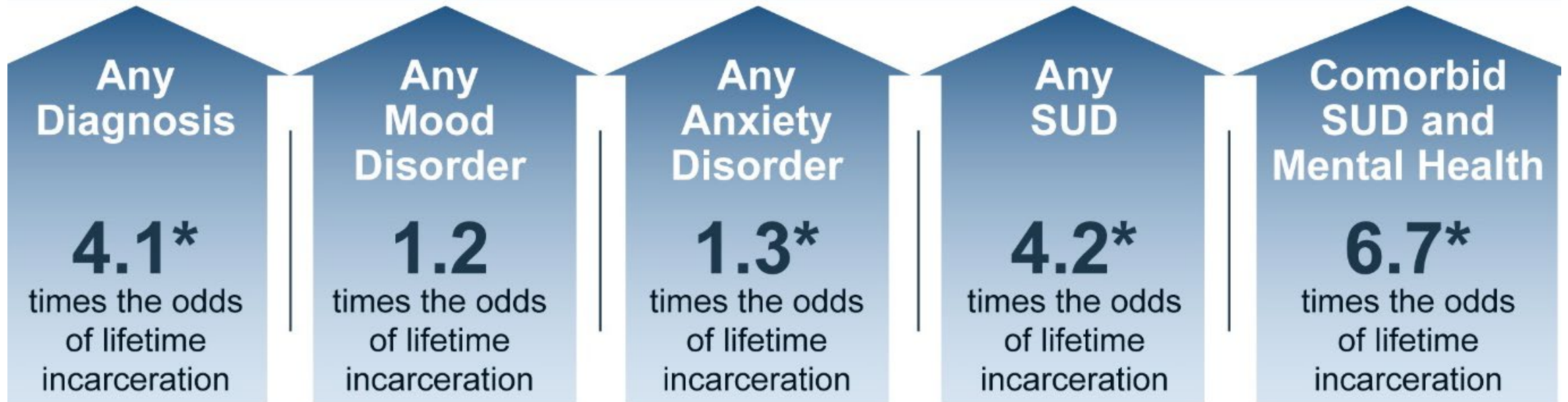


SAMHSA’s vision for the guides – and the underlying foundation – is to:

- Reflect scientific rigor and make recommendations from the evidence base.
- Provide expert consensus.
- Be comprehensive and modular for use by practitioners, administrators, and other stakeholders.
- Be accessible to the field.

Overview of the Issue

Association of Lifetime Mental Health Conditions and SUDs With Lifetime Incarceration; Odds Ratios Adjusted for Sociodemographic and Other Disorders



* $p \leq .001$

Source:

Moore, K. E., Oberleitner, L. M., Zonana, H. V., Buchanan, A. W., Pittman, B. P., Verplaetse, T. L., Angarita, G.A., Roberts, W., McKee, S. A. (2019). Psychiatric disorders and crime in the US population: Results from the National Epidemiologic Survey on Alcohol and Related Conditions Wave III. *The Journal of Clinical Psychiatry*, 80(2), 15899. <https://doi.org/10.4088/JCP.18m12317>

Overview of the Issue

Key Elements of Reentry

- Reentry planning (Collaborative Comprehensive Case Plans) across systems
- Warm hand-off to community providers to increase engagement
- Continuity of care; access to continuum of behavioral health services including harm reduction services
- Access to government identification (e.g., photo ID to obtain post-release treatment and government benefits)
- Medication, including Naloxone, and prescription access upon release
- Timely access to benefits, including Medicaid, Medicare, private health insurance, Supplemental Security Income/Social Security Disability Insurance (SSI/SSDI), Supplemental Nutrition Assistance Program (SNAP), Temporary Assistance for Needy Families (TANF), veteran's benefits, etc.
- Peer support services
- Gainful employment; employment services
- Safe, secure, affordable, stable housing
- Other support services including transportation, childcare, legal services

Adapted from: SAMHSA, *Criminal Justice System Intercept 4 - Transitioning back into the Community*, 2022

- Encounter barriers to mental health and substance use treatment, stable and safe housing, meaningful employment, and other recovery support services
- Reentry planning and support should begin during a term of incarceration and continue post-release to address the needs of each individual and promote strong linkages to care or continuity of care.

Overview of the Guide

Purpose of the Guide

- To provide information and implementation guidance on three interventions and practices that may be useful in working with people living with mental health conditions and/or substance use disorders reentering the community from jail or prison.
- To provide resources related to evaluation.

Structure

- Issue Brief
- What Research Tells Us
- Guidance for Selecting and Implementing Evidence-Based Interventions
- Examples of Organizations Implementing Evidence-Based Interventions
- Resources for Evaluation

Developed in collaboration with national experts

Systematic review of the evidence

Features case examples

The Role of Expert Input



Angel Sanchez, JD

Second Chance Fellow

Bureau of Justice Assistance

U.S. Department of Justice

Technical Expert Panel Member

The Role of Expert Input



Elizabeth Adelman

Communicable Disease Supervisor,
Southern Nevada Health District



Caitlin Bouchard, MA

Clinical Director/Psychologist, Rhode Island
Department of Corrections



Tony Cantillo

Warden, Maine Department of Corrections



Sean Clark, JD

National Director, Veterans Justice Programs,
Department of Veterans Affairs



Marie Garcia, PhD

Senior Social Scientist Analyst, Corrections
Portfolio Lead, National Institute of Justice



Cathy Thompson, PhD

National Chief, Drug Treatment Programs,
Federal Bureau of Prisons



Timothy Jefferies, MSW

Senior Policy Advisor, Bureau of Justice
Assistance



Michael Kane, MA

Senior Director, Criminal Justice Reform,
ForHealth Consulting at the University of
Massachusetts Chan Medical School



Eric Martin, MA

Social Science Analyst, Office of Research,
Evaluation & Technology, National Institute of
Justice



Sherry McKee, PhD

Project Director, Yale University Reentry
Program, Yale School of Medicine



Carrie Mulford, PhD

Deputy Chief, Services Research Branch,
National Institute on Drug Abuse



Barry Zack, MPH

The Bridging Group
Principal Consultant

Evidence-Based Approaches for Reentry Populations Living With Mental Health Conditions and/or Substance Use Disorders

Reviewed systematic reviews of peer-reviewed literature on populations experiencing mental health conditions and/or substance use disorders who are reentering the community from criminal justice settings

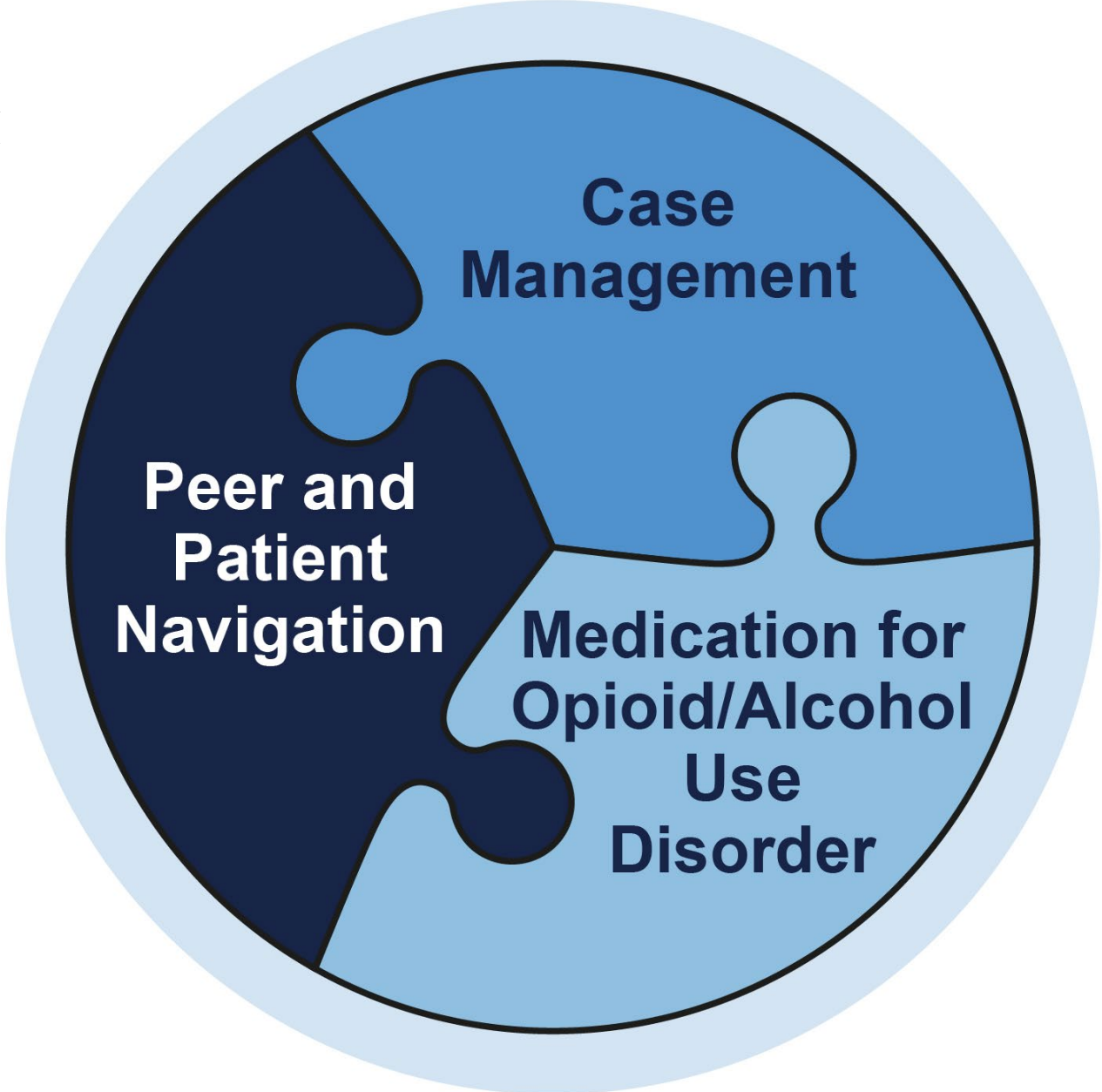
Identified potential interventions and discussed with SAMHSA, subject matter experts, and TEP

Identified three behavioral health interventions/approaches for inclusion

Screened abstracts for each intervention/approach (676 total)

Extracted information and synthesized findings

Evidence-Based Approaches for Reentry Populations Living With Mental Health Conditions and/or Substance Use Disorders



Implementation Examples



Yale University
School of Medicine

Serving Children and Adults in Need



Clarissa Cabello, LMSW LCDC

Program Director

Serving Children and Adults in Need

clarissa.Vazquez@scan-inc.org



Curtis Penn, MPA

Division Director, Justice Services

Felton Institute

cpenn@felton.com



Gandara Mental Health Center

Indira Andrade, LMHC

Program Director

Gandara Mental Health Center

landrade@gandaracenter.com



Forensic Drug Diversion Clinic in New Haven



Sherry McKee, PhD

Professor, Psychiatry

Yale School of Medicine

sherry.mckee@yale.com



Guidance for Selecting and Implementing Interventions

Implementation considerations and strategies

- For organizations, coalitions, communities
- For clinicians and other staff members

Implementation resources

- MOUD/MAUD, case management, peer and patient navigation, reentry supports

Sample Key Resources

- The **National Reentry Resource Center**, [Building Second Chances: Tools for Local Reentry Coalitions](#)
- **SAMHSA's GAINS Center for Behavioral Health and Justice Transformation**, [Sequential intercept Model \(SIM\)](#)
- **SAMHSA's** [Guidelines for Successful Transition of People With Mental or Substance Use Disorders From Jail and Prison: Implementation Guide](#)
- **SAMHSA's** [Use of Medication-Assisted Treatment for Opioid Use Disorder in Criminal Justice Settings](#)

Resources for Evaluation



FORMATIVE EVALUATIONS



FIDELITY EVALUATIONS



PROCESS EVALUATIONS



OUTCOME EVALUATIONS



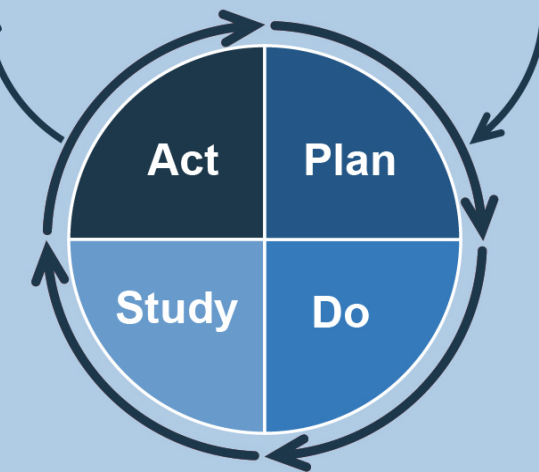
IMPACT EVALUATIONS

CONTINUOUS QUALITY IMPROVEMENT Model for Improvement

What are we trying to accomplish?

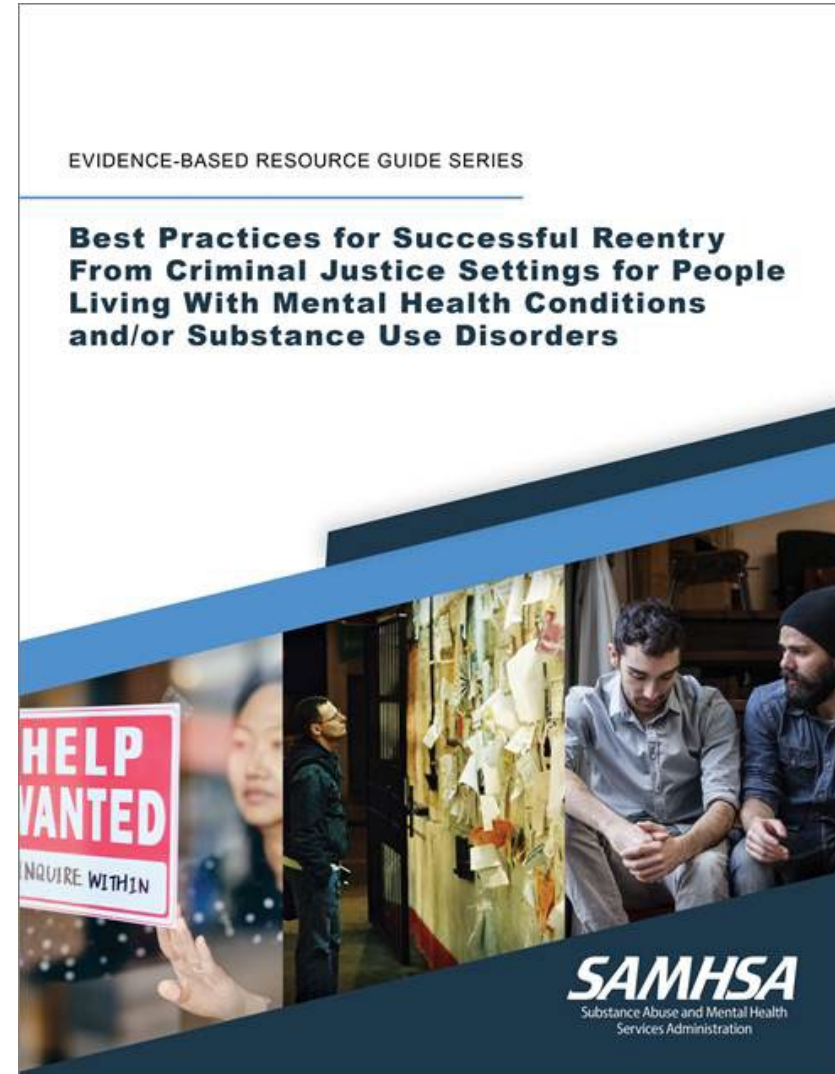
How will we know that a change is an improvement?

What change can we make that will result in improvement?



Conclusions

- The guide is now available on the SAMHSA Store:
<https://www.samhsa.gov/resource/ebp/best-practices-successful-reentry-criminal-justice-settings-people-living-mental-health>
- For more information, contact ebprc@samhsa.hhs.gov



Next Steps

The MHTTC Network is funded through SAMHSA to provide this training. As part of receiving this funding we are required to submit data related to the quality of this event.

Please take a moment to complete a **brief** survey about today's session.

Survey: <https://ttc-gpra.org/P?s=813516>

Within a week:

- The recording of today's session will be available on mhttcnetwork.org.
- Attendees will receive a follow-up email with instructions for downloading a certificate of completion.



The image is a 'THANK YOU' slide. It features a central blue square with a diagonal pattern of lighter and darker blue stripes. The words 'THANK YOU' are centered in the blue square in a bold, black, sans-serif font. The background is white, with several overlapping, semi-transparent orange and peach-colored geometric shapes, including triangles and trapezoids, creating a modern, abstract design. A dark blue horizontal bar is at the top. On the left side, there is a vertical line with a red segment at the top, a grey segment in the middle, and a dark purple segment at the bottom.

**THANK
YOU**