

TIC and Care for Individuals with Substance Use Disorders: Open Office Hours

A Collaboration Between:



Presenters



Aimee Rachel, LMSW
TIC Clinical Coordinator
Texas Association of Community Health Centers



Aniela Brown, MSW
TIC Clinical Coordinator
Texas Association of Community Health Centers

Objectives



- 1. Define trauma, its impact on the brain, and the potential behavioral and physical health outcomes.**
- 2. Discuss the relationship between traumatic experiences, SUDs, Special Populations, Stigma, and Harm Reduction.**
- 3. Explore the utilization of Trauma Informed Care (TIC) and screening for SUD as a prevention framework and strategy towards healing.**

Self-Care



At times, the materials presented in this session can be difficult to **view** or **hear**.

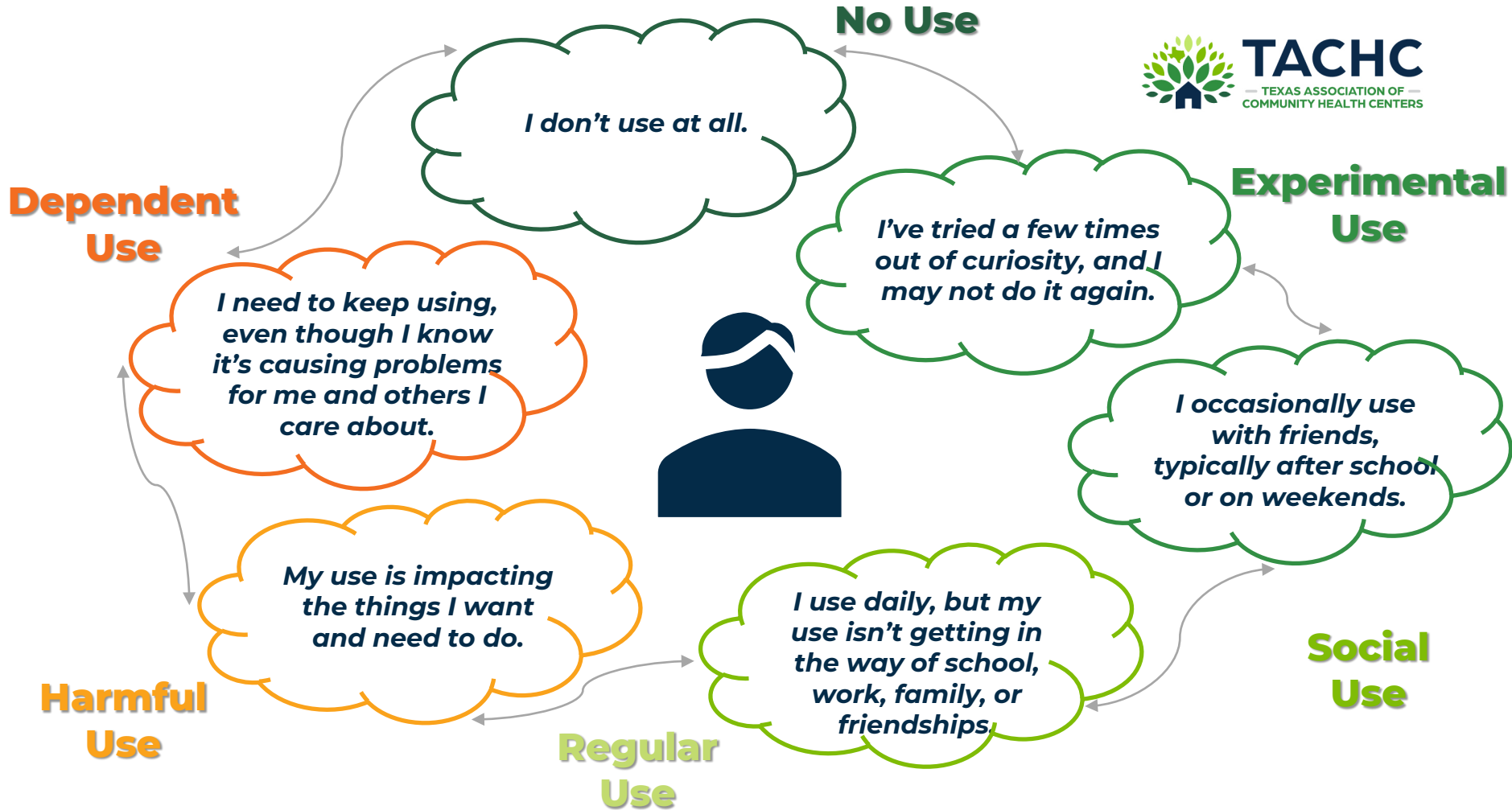
Please take a **break** at any time and seek decompression support if needed
(breathing exercise, turning camera off, taking a pause, etc.).

Let's Review

Substance Use Disorders

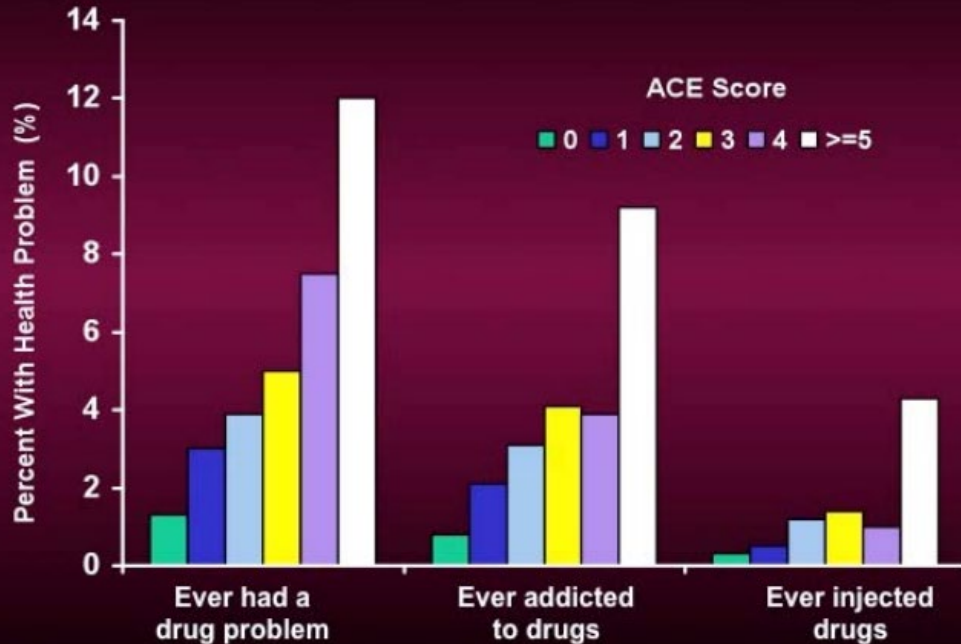
- Treatable, chronic diseases
- Problematic pattern of use
- Use despite harmful consequences





Information from the original ACE Study

ACE Score and Drug Abuse

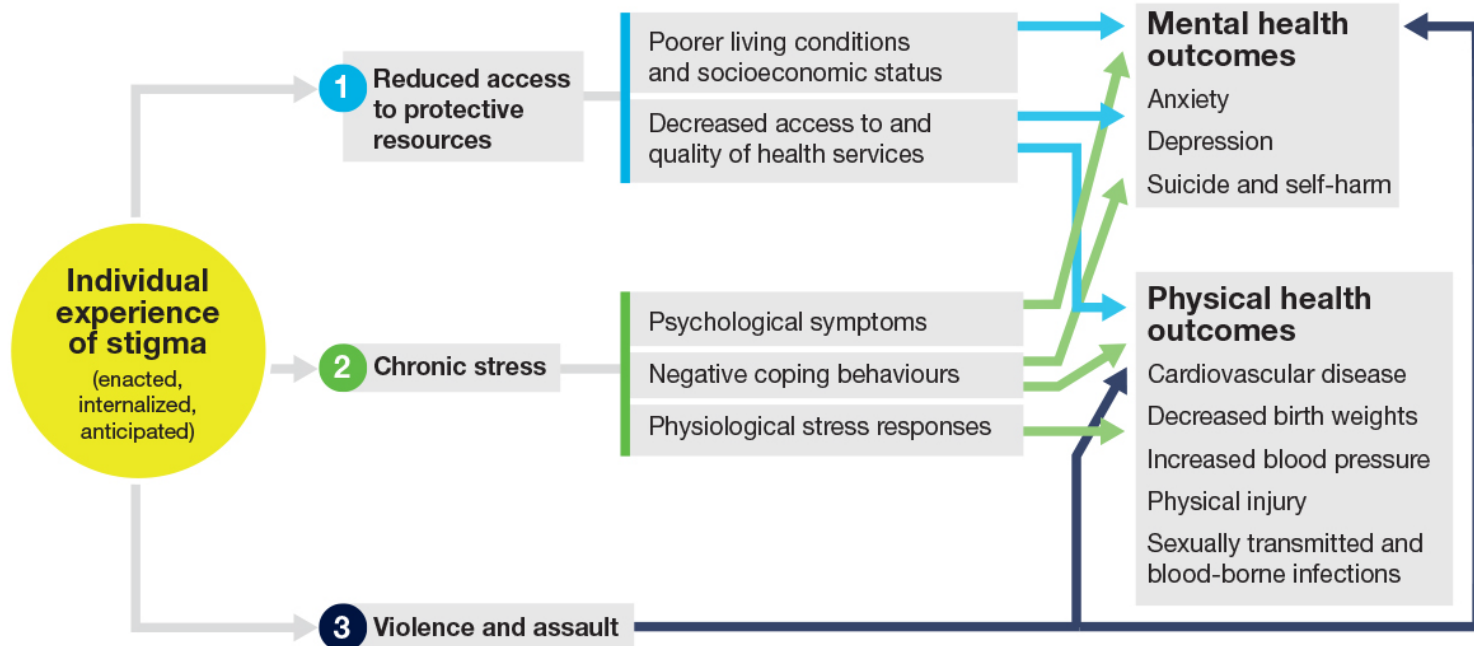


Slide courtesy of Robert Anda and Vincent Felitti



- ACEs are strongly associated, in a **dose-response fashion**, with substance use.
- Individuals with 6 or more ACEs have a **400% increased chance** of IV drug use.

Trauma and Stigma



SOURCE: Addressing Stigma: Towards a More Inclusive Health System, Government of Canada 2019

Trauma Reminders

- Difficult to identify
- Biological reactions
- Social impacts
- Health consequences







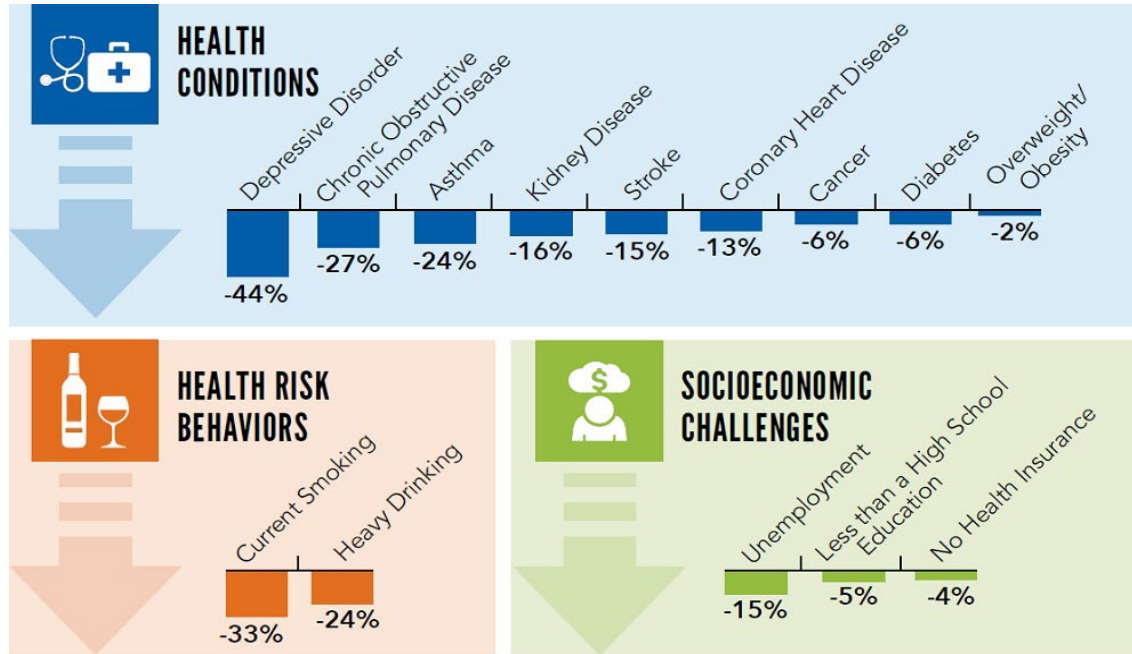
Adapted from Raja (2014)

Patient-Centered Language



Instead of...	Use...
Patient (outside of a healthcare encounter)	Person, individual, member, consumer
Not-adherent, non-compliant	Has barriers, “often chooses not to do...because”
Resistant, refuses	Prefers not to, Isn’t ready for
Victim, vulnerable	Survivor
High-risk population	People who are at increased risk for...
You alone make decisions	We’re in this together, We’re a team
Male & Female, Gendered pronouns	Partners, Folks, People
Underserved, the Uninsured	People who are medically underserved
What’s wrong with you?	What happened to you?

Get Upstream



SOURCE: BRFSS 2015-2017, 25 states, CDC Vital Signs, November 2019.

Preventable if We Act

- **Engage People** as change agents in their communities
- **Increase Understanding** of the shared root causes
- **Ensure Equity** in policies, programs, and services
- **Invest in Research** to better understand what works



SOURCE: <https://www.cdc.gov/injury/priority/index.html>.

Meet Olivia Martin



- **DOB: 6/5/87**
- **Occupation: Cashier**
- **Significant Illnesses: Pre-Diabetes**
- **Smoking: None**
- **Alcohol Use: 3 glasses of wine per night**

Questions

Open Office Hours Survey

Thank you!



Aimee Rachel, LMSW
TIC Clinical Coordinator
arachel@tachc.org

Aniela Brown, MSW
TIC Clinical Coordinator
abrown@tachc.org