

# Social Determinants of Health and the Interconnected Landscape of Holistic Health

Jean E. Balestrery Ph.D., LICSW, MAC  
Integrated Care Counsel, LLC

April 25, 2024

10:00 a.m., Central Time Zone



Great Lakes (HHS Region 5)

MHTTC

Mental Health Technology Transfer Center Network  
Funded by Substance Abuse and Mental Health Services Administration

# About the Presenter

- Presenter has multiple affiliations:  
Founder and CEO of Integrated Care Counsel, LLC, Hampton Faculty Fellow with Spirit of Eagles, SAMHSA Grant Reviewer, NASW National LGBTQ+ Committee member and employment as a licensed independent behavioral health clinician.
- Presenter has no conflicts of interest from funding or affiliation-related activities.



MHTTC

Mental Health Technology Transfer Center Network  
Funded by Substance Abuse and Mental Health Services Administration

# Description

## **Determinants, or drivers, of health**

are varied and many, encompassing biological, social, structural, environmental, legal and political determinants. These determinants combined bridge downstream and upstream sites from the medical clinic to the school classroom to state-specific legislation. This session will cover the many determinants of health, their definitions, related impacts and outcomes, interconnections and current intervention case examples. We will discuss the range of competence and importance of advocacy through a trauma-informed lens to advance holistic health for collective benefit.



Great Lakes (HHS Region 5)

**MHTTC**

Mental Health Technology Transfer Center Network  
Funded by Substance Abuse and Mental Health Services Administration

# SDOH



- “Social determinants of health (SDOH) are the conditions in the environments where people are born, live, learn, work, play, worship, and age that affect a wide range of health, functioning, and quality-of-life outcomes and risks.”

Photo Courtesy of Scott Gatzke

Reference: Healthy People 2030, U.S. Department of Health and Human Services, Office of Disease Prevention and Health Promotion. Retrieved [date graphic was accessed], from <https://health.gov/healthypeople/objectives-and-data/social-determinants-health>



Great Lakes (HHS Region 5)

**MHTTC**

Mental Health Technology Transfer Center Network  
Funded by Substance Abuse and Mental Health Services Administration

# Our Collective Conditions



- “A nation recovering from collective trauma”
- Widespread trauma
- “Our society is experiencing the psychological impacts of a collective trauma”

Reference: “Stress in America 2023” (Nov 2023), American Psychological Association-APA



Great Lakes (HHS Region 5)

MHTTC

Mental Health Technology Transfer Center Network  
Funded by Substance Abuse and Mental Health Services Administration

# Our Collective Context



- “We cannot ignore the fact that we have been significantly changed by the loss of more than one million Americans, as well as the shift in our workplaces, school systems, and culture at large. To move toward posttraumatic growth, we must first identify and understand the psychological wounds that remain”

– Arthur C. Evans Jr., PhD,  
APA’s chief executive officer

Reference: “Stress in America 2023” (Nov 2023), American Psychological Association-APA



Great Lakes (HHS Region 5)

MHTTC

Mental Health Technology Transfer Center Network  
Funded by Substance Abuse and Mental Health Services Administration

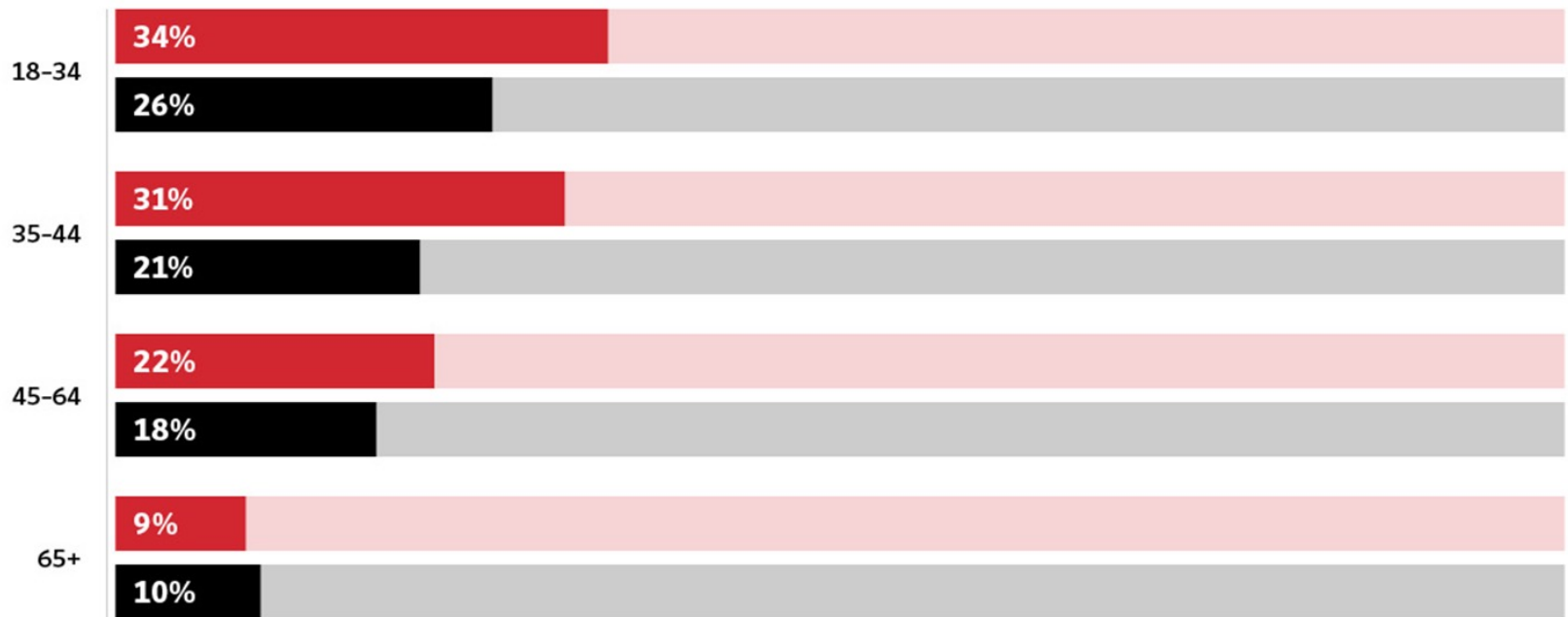
# Our Collective Context

## PRE- AND POST-PANDEMIC STRESS LEVEL COMPARISON BY AGE

% OF ADULTS WHO RATE THEIR AVERAGE STRESS BETWEEN EIGHT AND TEN\*



■ 2023 ■ 2019



\*Respondents were asked to rate their average level of stress during the past month on a scale of 1 to 10, where 1 means "little or no stress" and 10 means "a great deal of stress"

STRESS IN AMERICA™ 2023

© 2023 American Psychological Association



Great Lakes (HHS Region 5)

MHTTC

Mental Health Technology Transfer Center Network  
Funded by Substance Abuse and Mental Health Services Administration

# Grace: Gift of Kindness


There's a German word for how you might be feeling right now



## Weltschmerz

(n.) lit. Translates to "world weariness" or "world pain" (welt meaning world, schmerz meaning pain).

## I'm feeling...

 Calm	 Happy	 Silly	 Relaxed
 Nervous	 Annoyed	 Sad	 Shy
 Surprised	 Hungry	 Angry	 Confused
 Sleepy	 Sick	 Hurt	 Hot



Great Lakes (HHS Region 5)

MHTTC

Mental Health Technology Transfer Center Network  
Funded by Substance Abuse and Mental Health Services Administration



# Reflection

*What Gifts of Kindness have you given or received?*



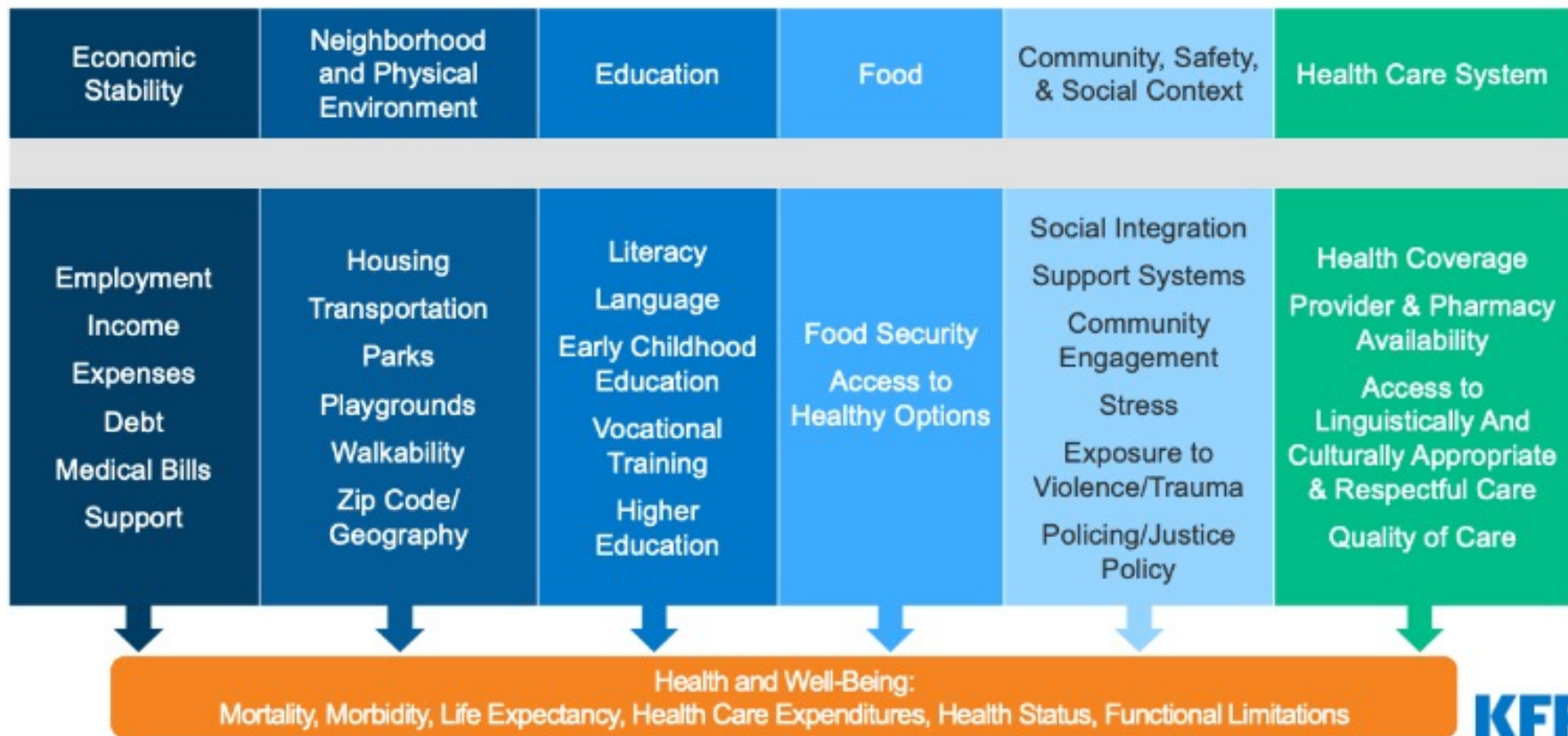
Great Lakes (HHS Region 5)

MHTTC

Mental Health Technology Transfer Center Network  
Funded by Substance Abuse and Mental Health Services Administration

# SDOH - Language

## Social Determinants of Health



- “Social determinants of health (SDOH) are the conditions in the environments where people are born, live, learn, work, play, worship, and age that affect a wide range of health, functioning, and quality-of-life outcomes and risks.”

Reference: KFF [Tracking Social Determinants of Health During the COVID-19 Pandemic | KFF](#)

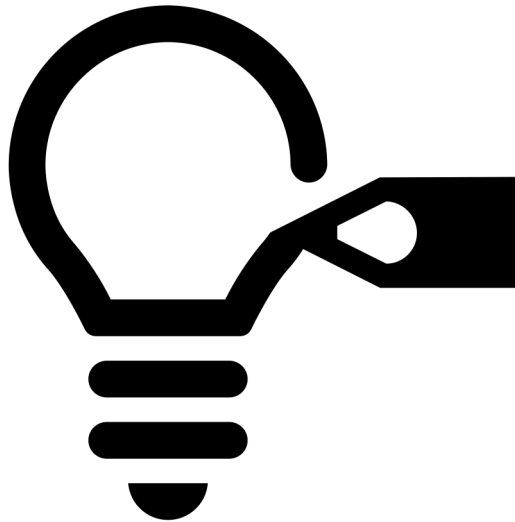


Great Lakes (HHS Region 5)

**MHTTC**

Mental Health Technology Transfer Center Network  
 Funded by Substance Abuse and Mental Health Services Administration

# Elevating Awareness



- Social “determinants”

VS

- Social “drivers”

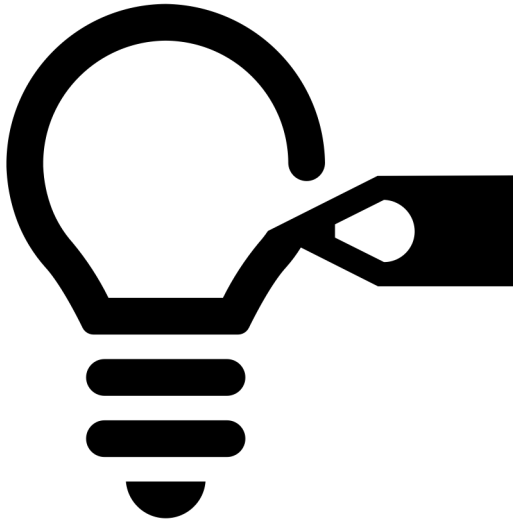


Great Lakes (HHS Region 5)

**MHTTC**

Mental Health Technology Transfer Center Network  
Funded by Substance Abuse and Mental Health Services Administration

# Elevating Awareness



- SDO - “health”
- “There is no health without mental health” - WHO
- “And there is no health or mental health unless we also attend to their social determinants.”

- Sederer (2016)

References: World Health Organization; Sederer, L. I. (2016). “The Social Determinants of Mental Health,” *Psychiatric services* 67:2.



Great Lakes (HHS Region 5)

**MHTTC**

Mental Health Technology Transfer Center Network  
Funded by Substance Abuse and Mental Health Services Administration

# Elevating Awareness



80% of health is driven by what happens outside the doctor's office.



Physical and behavioral health are deeply linked: 68% of adults with mental health disorders also have medical conditions.

- Advancing whole-person health requires a broader and holistic view
- Advancing whole-person health requires developing an extra-clinical language of structure

References: Elevance Health Report “Driving our Health: A study exploring health perceptions in America.” Retrieved from [What's Driving Our Health Study | Elevance Health](#)

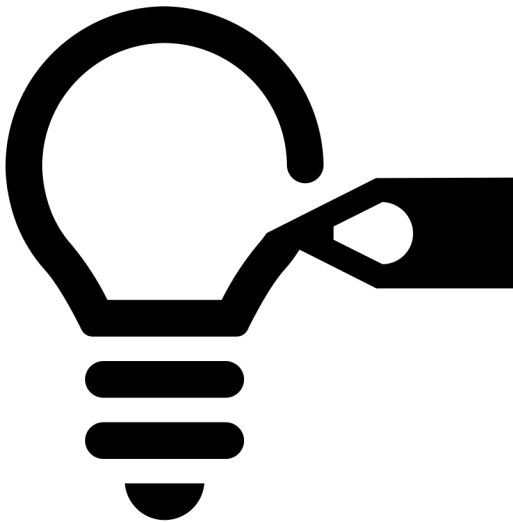


Great Lakes (HHS Region 5)

MHTTC

Mental Health Technology Transfer Center Network  
Funded by Substance Abuse and Mental Health Services Administration

# Elevating Awareness



- SDOH

to...

- SDOW =

Social Drivers of Wellbeing



Great Lakes (HHS Region 5)

**MHTTC**

Mental Health Technology Transfer Center Network  
Funded by Substance Abuse and Mental Health Services Administration

# Elevating Awareness

## Education Can Help People Connect the Dots on Whole Health



Nearly half of Americans (46%) are unaware of the concept of social drivers of health (SDH).



Once given the definition of SDH, **60%** of Americans agree that their local community is facing at least some health issues related to SDH.

- “We can do more to connect the dots on whole health and its drivers.”
- “While many people in the U.S. are aware that drivers like financial stability, mental health, and access to nutritious food can significantly impact our health, we need to expand our understanding to include all the drivers that shape health.”

Reference: Elevance Health Report “Driving our Health: A study exploring health perceptions in America.” Retrieved from [What's Driving Our Health Study | Elevance Health](#)



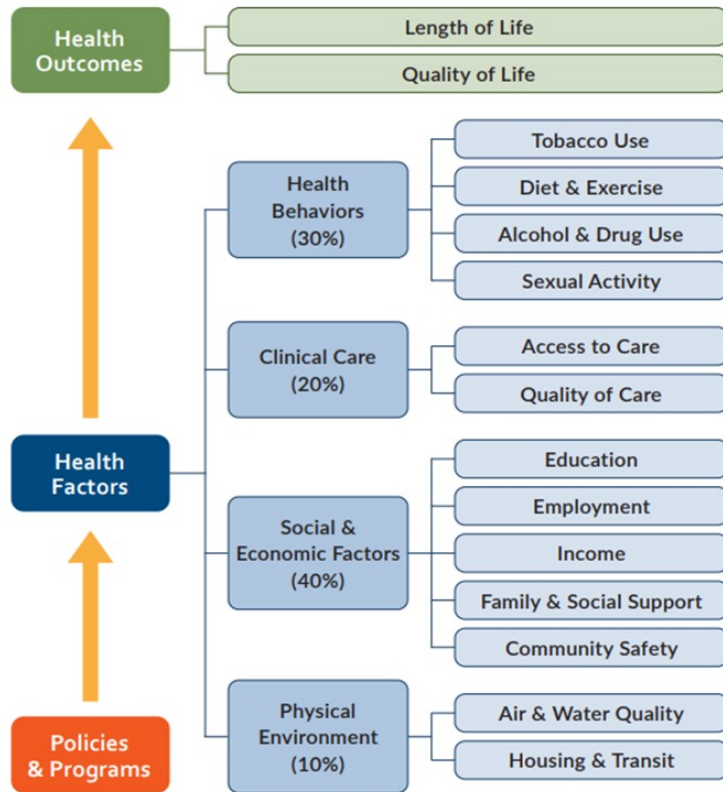
Great Lakes (HHS Region 5)

MHTTC

Mental Health Technology Transfer Center Network  
Funded by Substance Abuse and Mental Health Services Administration

# SD Impacts & Outcomes

County Health Rankings Model



County Health Rankings model © 2014 UWPHI

- SD impact up to 80% of health outcomes
- VS
- Clinical care up to 20%



Great Lakes (HHS Region 5)

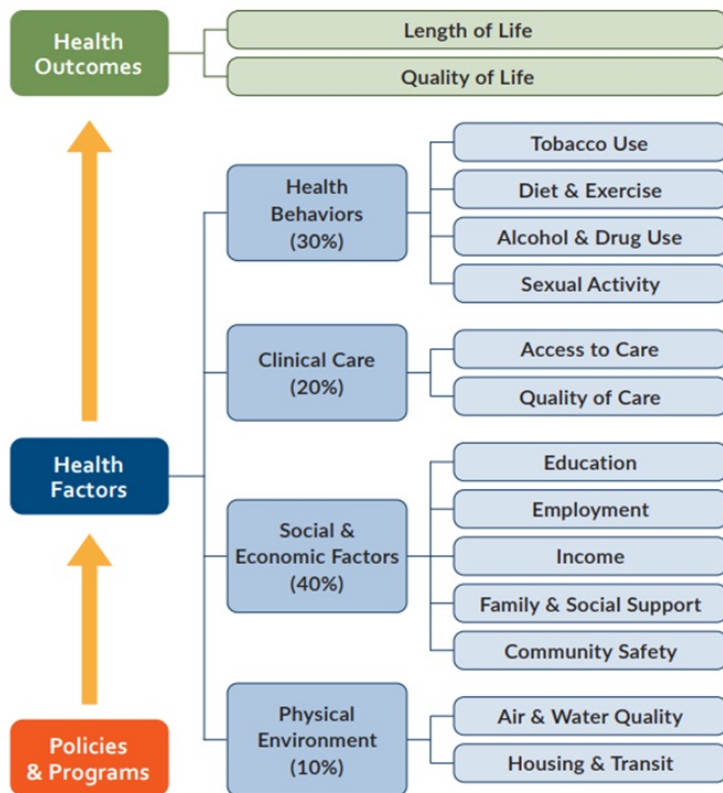
MHTTC

Mental Health Technology Transfer Center Network  
Funded by Substance Abuse and Mental Health Services Administration



# Embodiment

County Health Rankings Model



County Health Rankings model © 2014 UWPHI

- “bodies tell stories about—and cannot be studied divorced from—the conditions of our existence”
- “a multilevel phenomenon, as it necessarily entails the interplay between bodies, components of bodies, and the world(s) in which the bodies live”
- “As clue to life histories, hidden and revealed”
- “As reminder of entangled consequences of diverse forms of social inequality”

Reference: Krieger, N. “Embodiment: a conceptual glossary for epidemiology,” *J Epidemiol Community Health* 2005



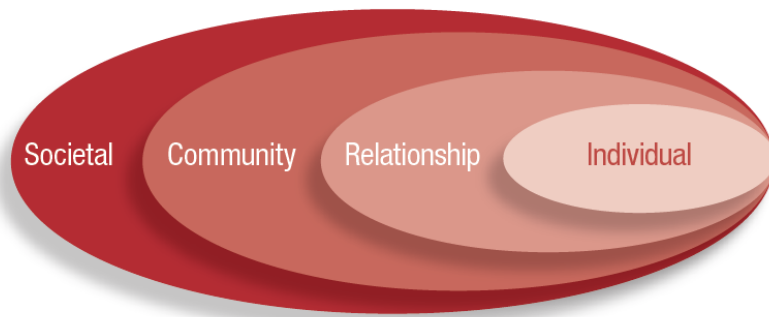
Great Lakes (HHS Region 5)

MHTTC

Mental Health Technology Transfer Center Network  
Funded by Substance Abuse and Mental Health Services Administration

# Weathering

## The EXTRAORDINARY STRESS of ORDINARY LIFE in an UNJUST SOCIETY (2023)



- Social-Ecological Model

- “a stress-related biological process that leaves identifiable groups of Americans vulnerable to dying or suffering chronic disease and disability long before they are chronologically old.”
- The challenges and insults that society levies on human bodies which “ravages their health”
- marginalized communities disproportionately experience weathering effects -

Reference: Arline T. Geronimus, Weathering, The Extraordinary Stress of Ordinary Life in an Unjust Society (2023)



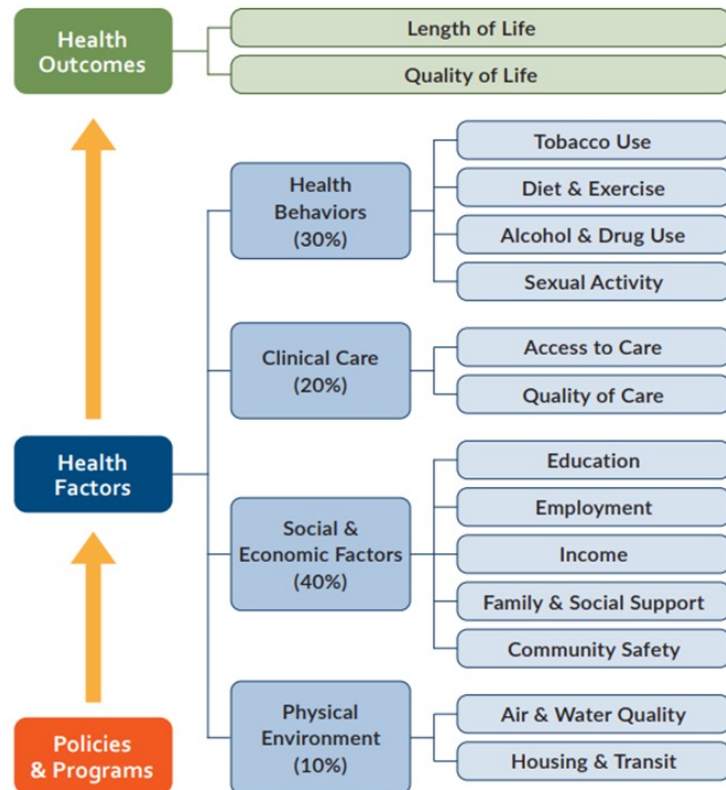
Great Lakes (HHS Region 5)

MHTTC

Mental Health Technology Transfer Center Network  
Funded by Substance Abuse and Mental Health Services Administration

# Explanatory Models

County Health Rankings Model



County Health Rankings model © 2014 UWPHI

- “Explanatory models of illness – the way people perceive, interpret and respond to it – are mediated not only by the illness itself, but also by cultural and social contexts.”

## • Disease vs Illness

- “The physician may view depression as a chemical imbalance, whereas for the patient, depending on the cultural and social context, it can be a consequence of isolation, or from thinking too much, or spirit possession.”

Reference: [Assessing explanatory models and health beliefs: An essential but overlooked competency for clinicians | BJPsych Advances | Cambridge Core](#)

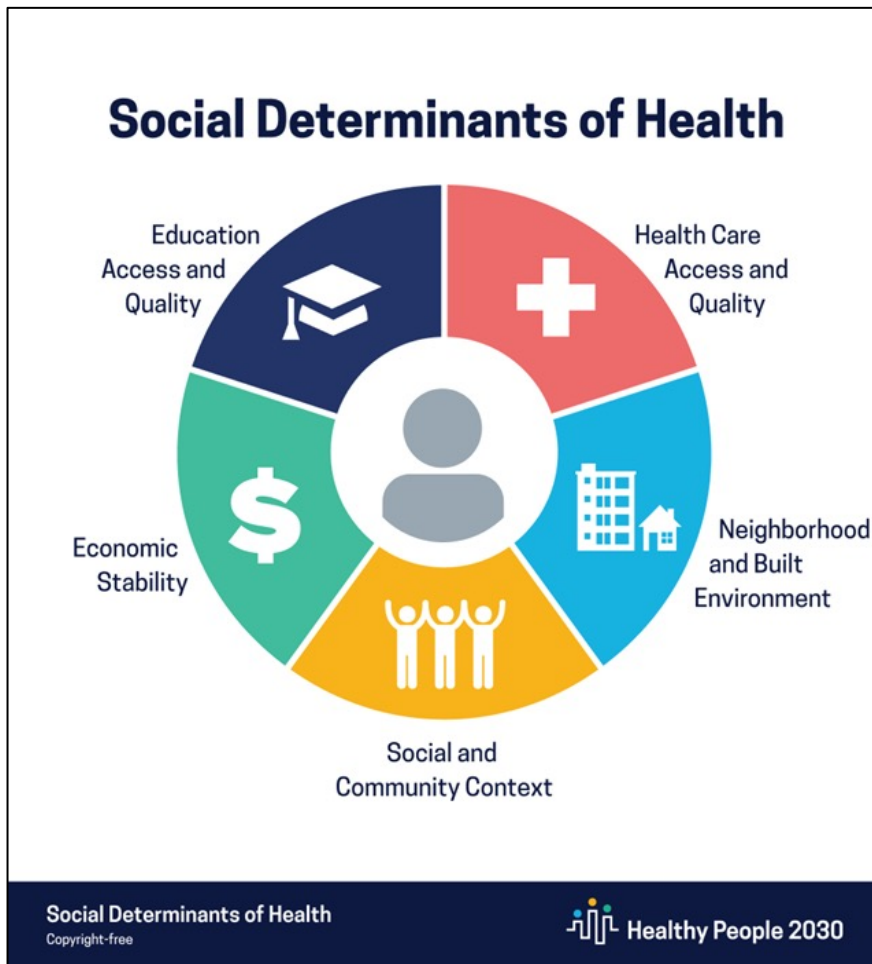


Great Lakes (HHS Region 5)

MHTTC

Mental Health Technology Transfer Center Network  
Funded by Substance Abuse and Mental Health Services Administration

# SD Impacts & Outcomes



## COSTS

- Unaddressed social determinants of health not only worsen medical outcomes, but also increase total cost of care:
  - Today, U.S. health systems spend approximately \$155 billion on healthcare costs associated with food insecurity.
  - Nearly 80% of ED visits by homeless patients are preventable with reliable access to primary care.
  - And patients exposed to violence during childhood are five times more likely to develop a mental health condition, which costs the health system more than \$147 billion annually.

Photo Courtesy of Scott Gatzke

Reference: Healthy People 2030, U.S. Department of Health and Human Services, Office of Disease Prevention and Health Promotion. Retrieved from <https://health.gov/healthypeople/objectives-and-data/social-determinants-health>



Great Lakes (HHS Region 5)

MHTTC

Mental Health Technology Transfer Center Network  
Funded by Substance Abuse and Mental Health Services Administration

# SD Impacts & Outcomes

## Many Americans Face Unmet Social, Economic, and Health Needs



**1 in 2** say it's hard to find affordable, healthy food in their local community



**1 in 3** Americans has altered their eating habits due to financial concerns



**1 in 5** say lack of transportation has kept them from medical appointments, work, or getting the things they need

- “Backgrounds and circumstances can greatly influence our ability to meet our basic needs and access services.”
- “Improving the health of our nation starts with broadening our view of what health means.”

Reference: Elevance Health Report “Driving our Health: A study exploring health perceptions in America.” Retrieved from [What's Driving Our Health Study | Elevance Health](#)



Great Lakes (HHS Region 5)

**MHTTC**

Mental Health Technology Transfer Center Network  
Funded by Substance Abuse and Mental Health Services Administration

# Reflection

*What does health, or wellbeing, mean to you?*



Great Lakes (HHS Region 5)

MHTTC

Mental Health Technology Transfer Center Network  
Funded by Substance Abuse and Mental Health Services Administration

# SD Impacts & Outcomes

## Americans of Color Are Disproportionately Affected by the Consequences of SDH

Percentage reporting that their local community is facing at least some health issues related to SDH:



- “Inequities among demographic groups shape an individual’s view of whole health and the ability to advance equity.”

Reference: Elevance Health Report “Driving our Health: A study exploring health perceptions in America.” Retrieved from [What's Driving Our Health Study | Elevance Health](#)



Great Lakes (HHS Region 5)

MHTTC

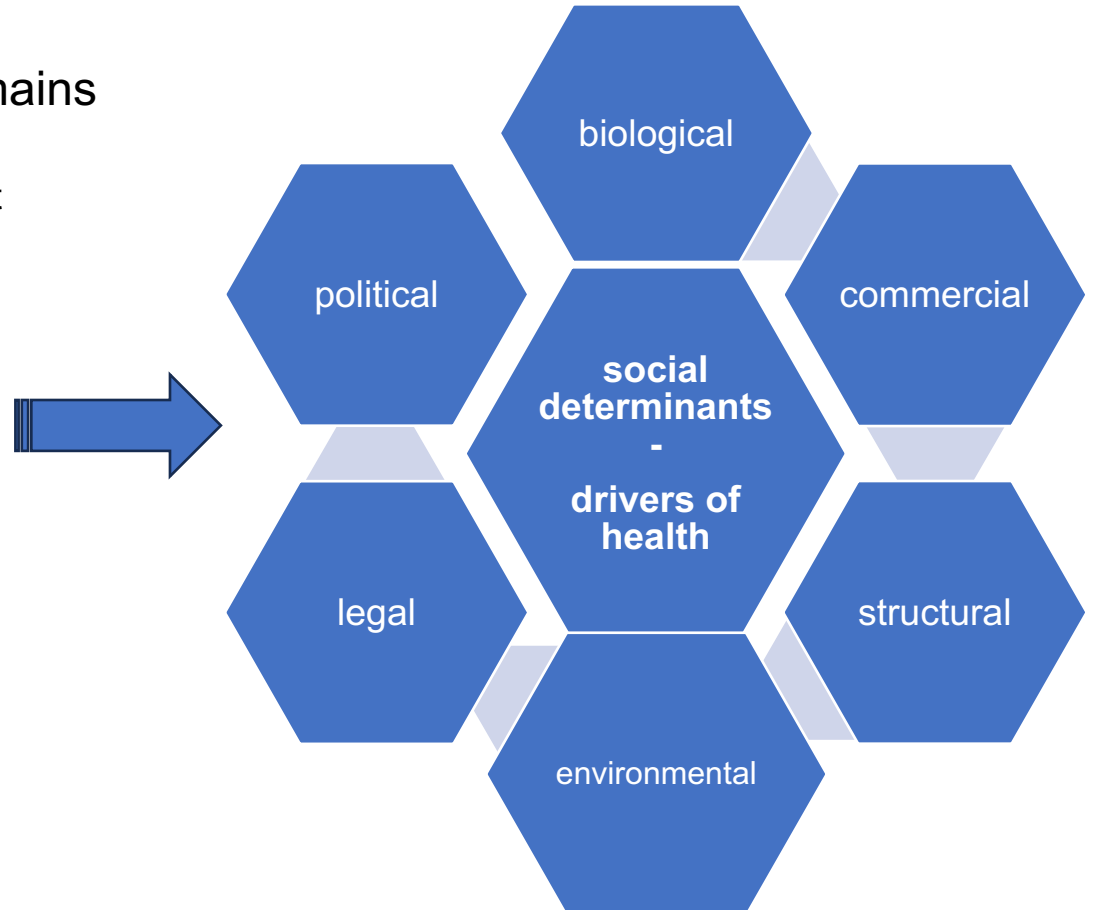
Mental Health Technology Transfer Center Network  
Funded by Substance Abuse and Mental Health Services Administration

# Connecting the Dots

- Advancing whole-person health requires a broad and holistic view

## Healthy People 2030 – 5 Domains

- 1-Neighborhood and Build Environment
- 2-Social and Community Context
- 3-Economic Stability
- 4-Education & Access and Quality
- 5-HealthCare Access & Quality



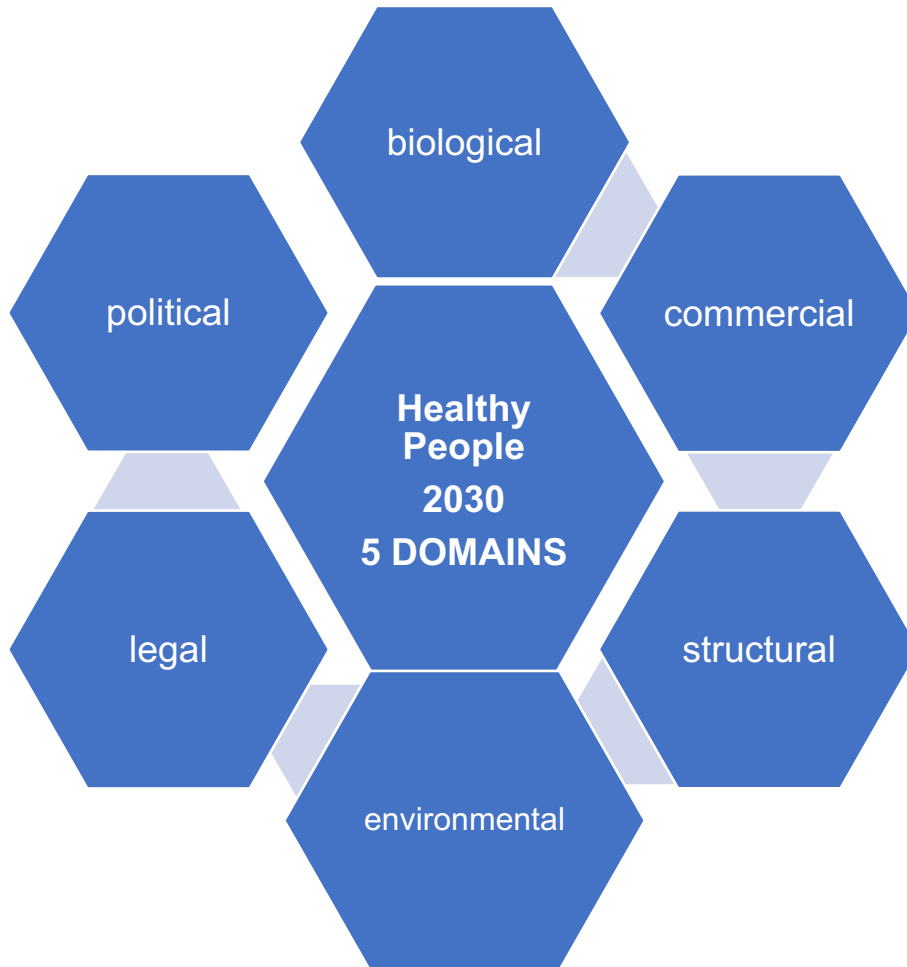
Great Lakes (HHS Region 5)

MHTTC

Mental Health Technology Transfer Center Network  
Funded by Substance Abuse and Mental Health Services Administration



# Connecting the Dots



- “To meaningfully improve health, we need to reimagine the health system to support this broader view and continue to strengthen the communities”

Reference: Elevance Health Report “Driving our Health: A study exploring health perceptions in America.” Retrieved from [What's Driving Our Health Study | Elevance Health](#)



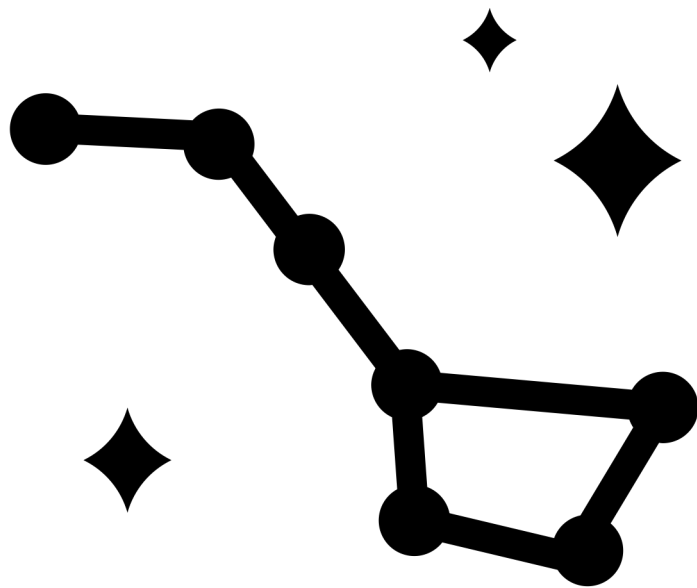
Great Lakes (HHS Region 5)

MHTTC

Mental Health Technology Transfer Center Network  
Funded by Substance Abuse and Mental Health Services Administration

# Environment

(neighborhood and built environment... “taken-for-granted” environment)



- **Light pollution:**

“the excessive or inappropriate use of outdoor artificial light”

- “Artificial light can wreak havoc on natural body rhythms in both humans and animals. Nocturnal light interrupts sleep and confuses the circadian rhythm—the internal, twenty-four-hour clock that guides day and night activities and affects physiological processes in nearly all living organisms.”
- “An increased amount of light at night lowers melatonin production, which results in sleep deprivation, fatigue, headaches, stress, anxiety, and other health problems. Recent studies also show a connection between reduced melatonin levels and cancer.”
  - Blue light (cell phones, computers etc.)

Reference: National Geographic [Light Pollution \(nationalgeographic.org\)](http://nationalgeographic.org)



Great Lakes (HHS Region 5)

MHTTC

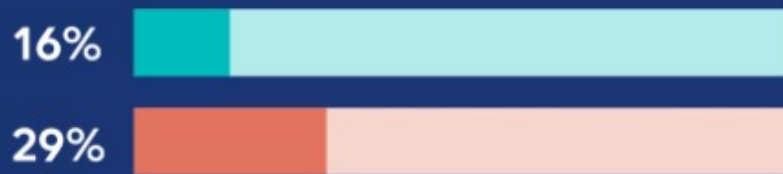
Mental Health Technology Transfer Center Network  
Funded by Substance Abuse and Mental Health Services Administration

# Environment

(neighborhood and built environment... “taken-for-granted” environment)

## We Underestimate the Impact of Some SDH

Only **16%** agree that air pollution is prevalent where they live, but **29%** of Americans live in counties with pollution levels above National Ambient Air Quality Standards.



\*Air Quality National Summary, EPA 2020

- Air pollution:
- Exposure with extreme heat doubles the risk of fatal heart attack
- Short term exposure causes inflammation, oxidative stress, nervous system imbalances
- 12 million deaths annually due to air pollution

References: 1-Advisory Board (2023): “Climate change is affecting heart health. Here’s what you can do”; 2-Albrecht et al. (2007):“The Distress Caused by Environmental Change”; 3-Centers for Disease Control and Prevention; 4-Elevance Health Report “Driving our Health: A study exploring health perceptions in America.” Retrieved from [What's Driving Our Health Study | Elevance Health](#)



Great Lakes (HHS Region 5)






MHTTC

Mental Health Technology Transfer Center Network  
Funded by Substance Abuse and Mental Health Services Administration






# Environment

(neighborhood and built environment.... outdoor earth environment)

## CHANGES IN CLIMATE

-  Increased global temperature
-  Extreme weather and disasters
-  Precipitation extremes
-  Sea level rise
-  Changes in land use and growing seasons

## EFFECTS OF CLIMATE CHANGE

-  Extreme heat
-  Air and water pollution
-  Reduced food and water quality
-  Changes in infectious diseases and vector transmissions
-  Increasing allergens

## • Climate Change

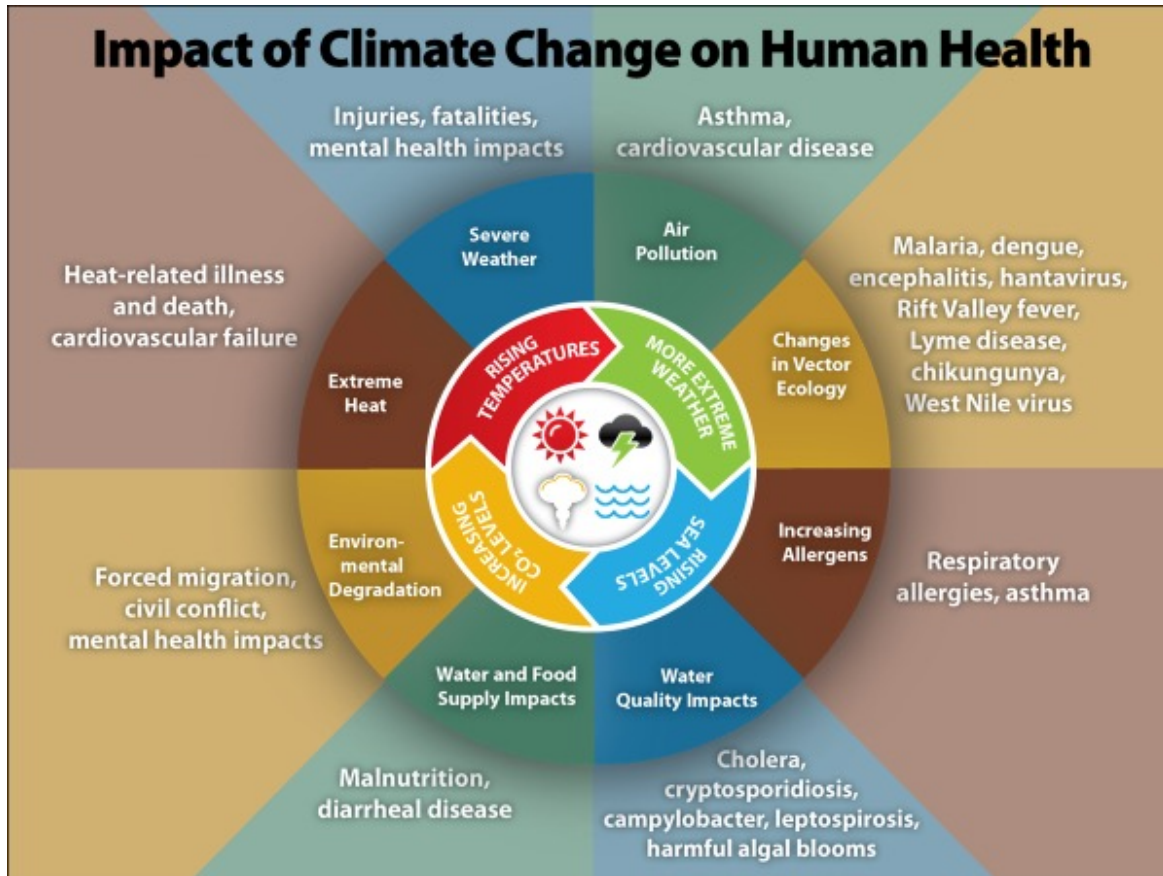
Higher surface temperatures have led to changes in the climate of every region of the planet:

- altered precipitation patterns
- rising sea levels
- melting polar ice
- increases in severe storms
- flooding
- heat waves
- drought
- wildfires

Reference: National Institutes of Health, Impacts of Climate Change on Human Health and Associated Research Needs

# Environment

(neighborhood and built environment...outdoor earth environment)



## • Climate Change

- Climate change is associated with adverse impacts on mental health and wellbeing, including trauma.
- The health impacts of climate change are unevenly distributed, with people living in more vulnerable contexts (e.g., lower resource settings, low income countries or neighborhoods) with fewer supports generally experiencing the worst outcomes

## • Costs of Care

- Direct and Indirect costs
- Health costs -heat, wildfire smoke, air pollution, ozone exposure combined-**estimated \$844.2 Billion per year**

Reference: Centers for Disease Control and Prevention, [Climate Effects on Health | CDC](https://www.cdc.gov/climateandhealth/)



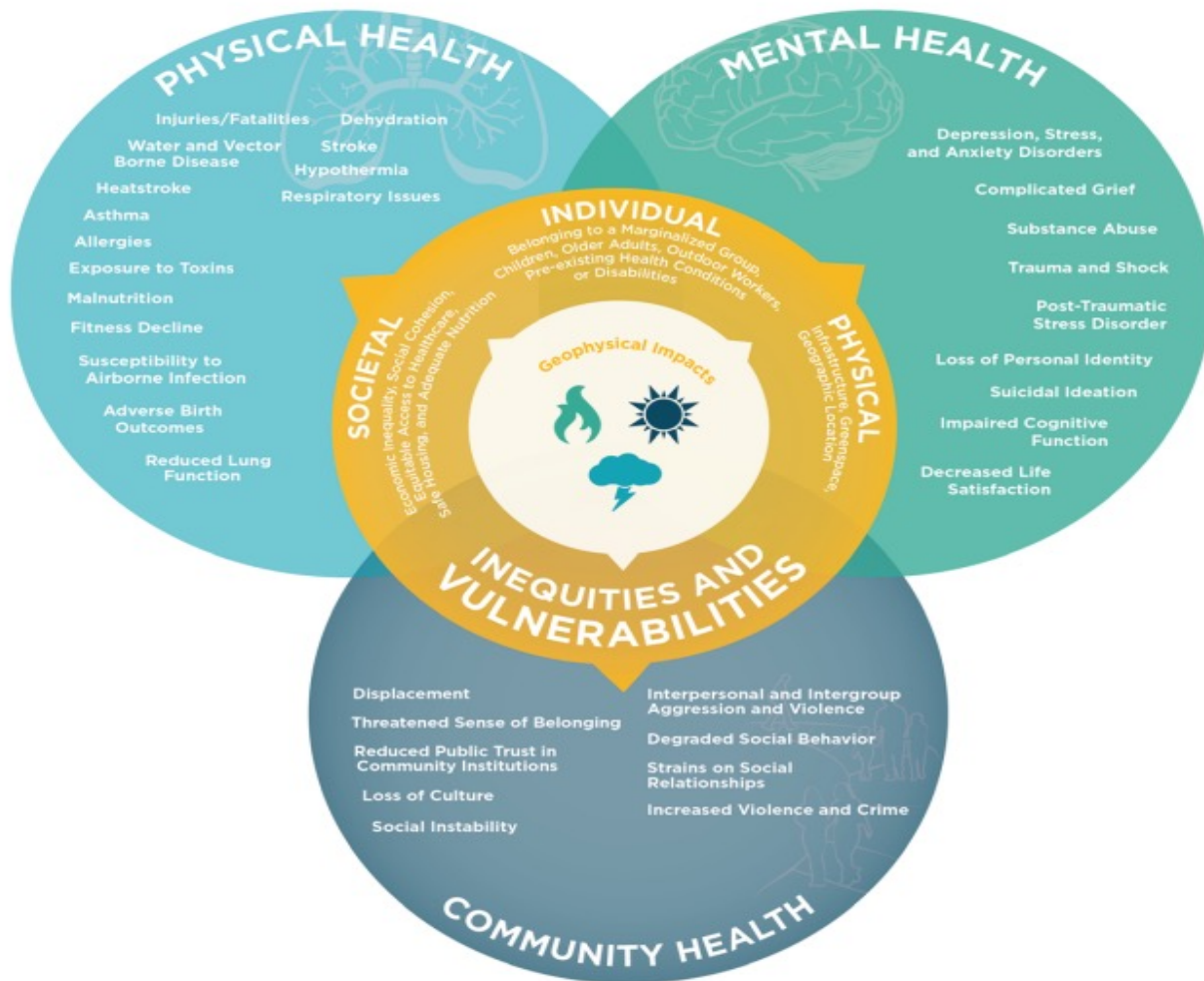
Great Lakes (HHS Region 5)

MHTTC

Mental Health Technology Transfer Center Network  
Funded by Substance Abuse and Mental Health Services Administration

# Environment

(neighborhood and built environment...outdoor earth environment)



- **Global Warming Impacts on Mental Health:**  
25-50% of people exposed to an extreme weather disaster are at risk of adverse mental health effects – including “Trauma and Shock” and “Post-Traumatic Stress Disorder”

Reference: American Psychological Association, “Mental Health and our Changing Climate: Impacts, Inequities, Responses, 2021



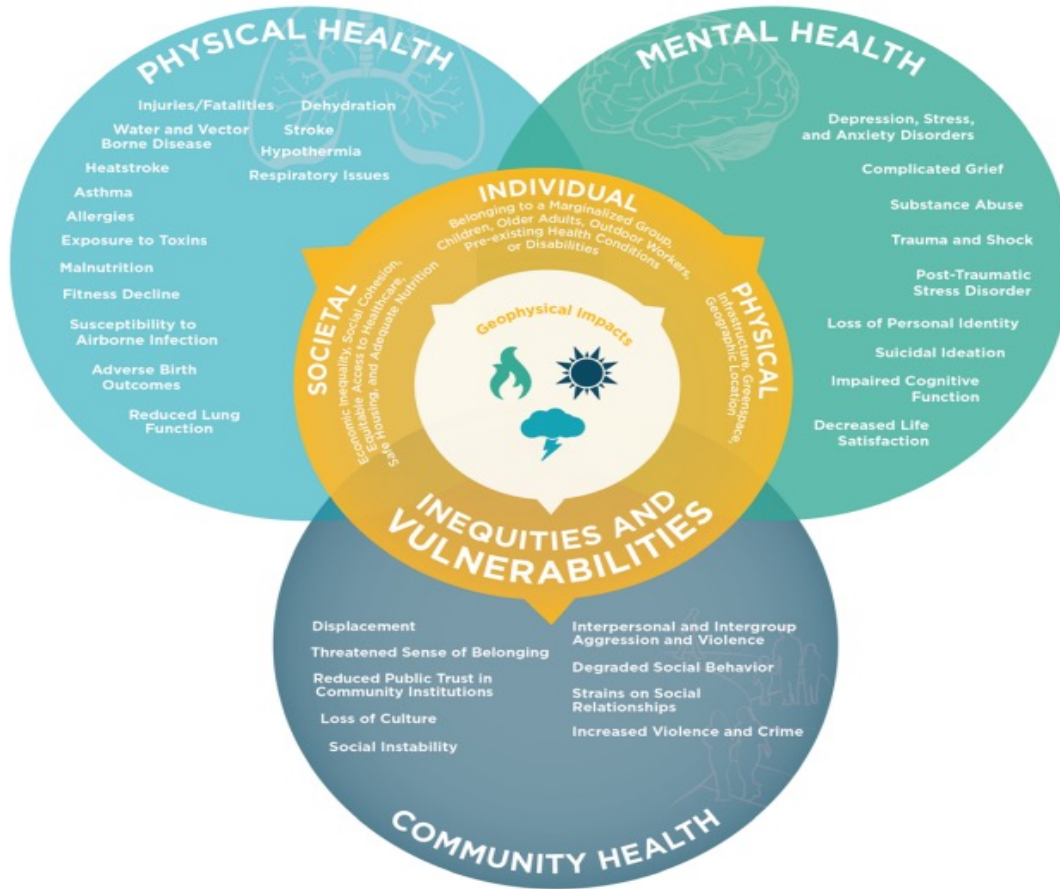
Great Lakes (HHS Region 5)

MHTTC

Mental Health Technology Transfer Center Network  
Funded by Substance Abuse and Mental Health Services Administration

# Environment

(neighborhood and built environment...outdoor earth environment)



## • ENTER:

- Eco-Anxiety: “chronic fear of environmental doom”
- Solastalgia: “a form of homesickness one gets when one is still at ‘home’”
- Eco-anger
- Eco-grief
- Existential offness
- Eco-phobia
- Eco-PTSD
- Eco-burnout
- Climate trauma
- Climate equity

Reference: American Psychological Association, “Mental Health and our Changing Climate: Impacts, Inequities, Responses, 2021



Great Lakes (HHS Region 5)

MHTTC

Mental Health Technology Transfer Center Network  
Funded by Substance Abuse and Mental Health Services Administration

# Reflection

*What climate changes, if any, have you –or someone you know- experienced?*

*What impacts have you –or someone you know- experienced as a result of climate change?*

*Solastalgia?*

**“the sense of isolation connected to the present state of one’s home and territory”**



Great Lakes (HHS Region 5)

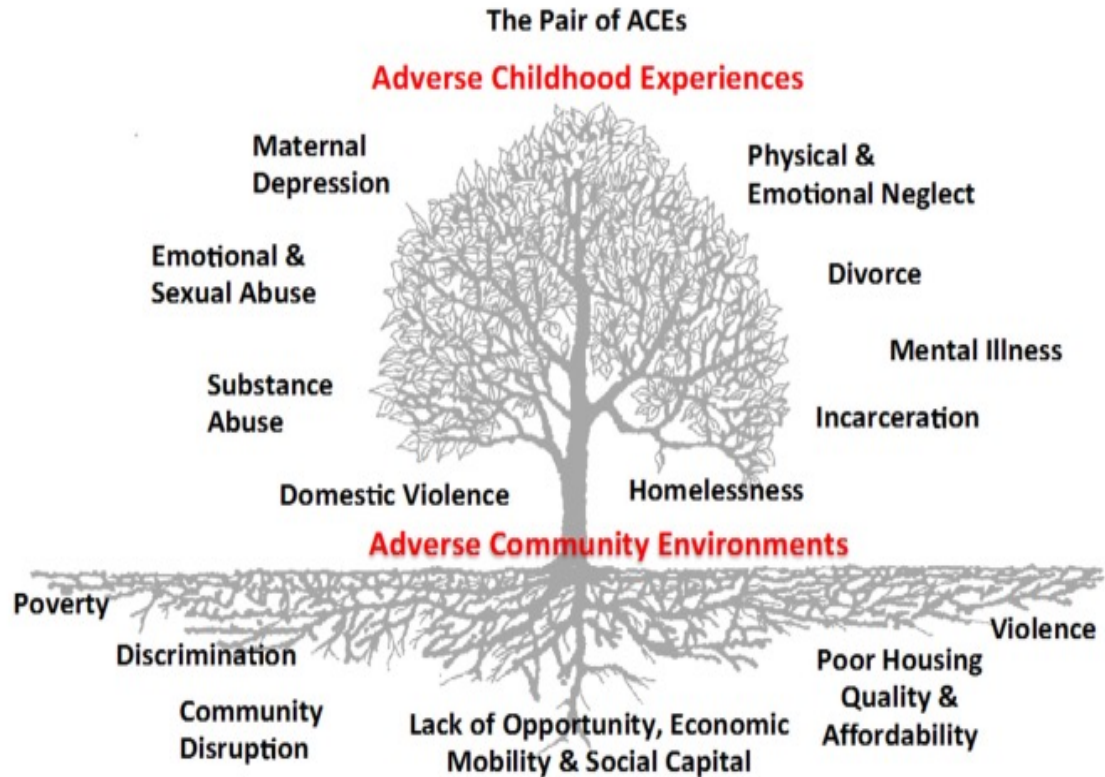
**MHTTC**

Mental Health Technology Transfer Center Network  
Funded by Substance Abuse and Mental Health Services Administration



# Community

(social and community context...pair of ACEs)



Ellis, W., Dietz, W.H., Chen, K.D. (2022). Community Resilience: A Dynamic Model for Public Health 3.0. *Journal of Public Health Management and Practice*, (28)1, S18-S26. doi: 10.1097/PHH.0000000000001413



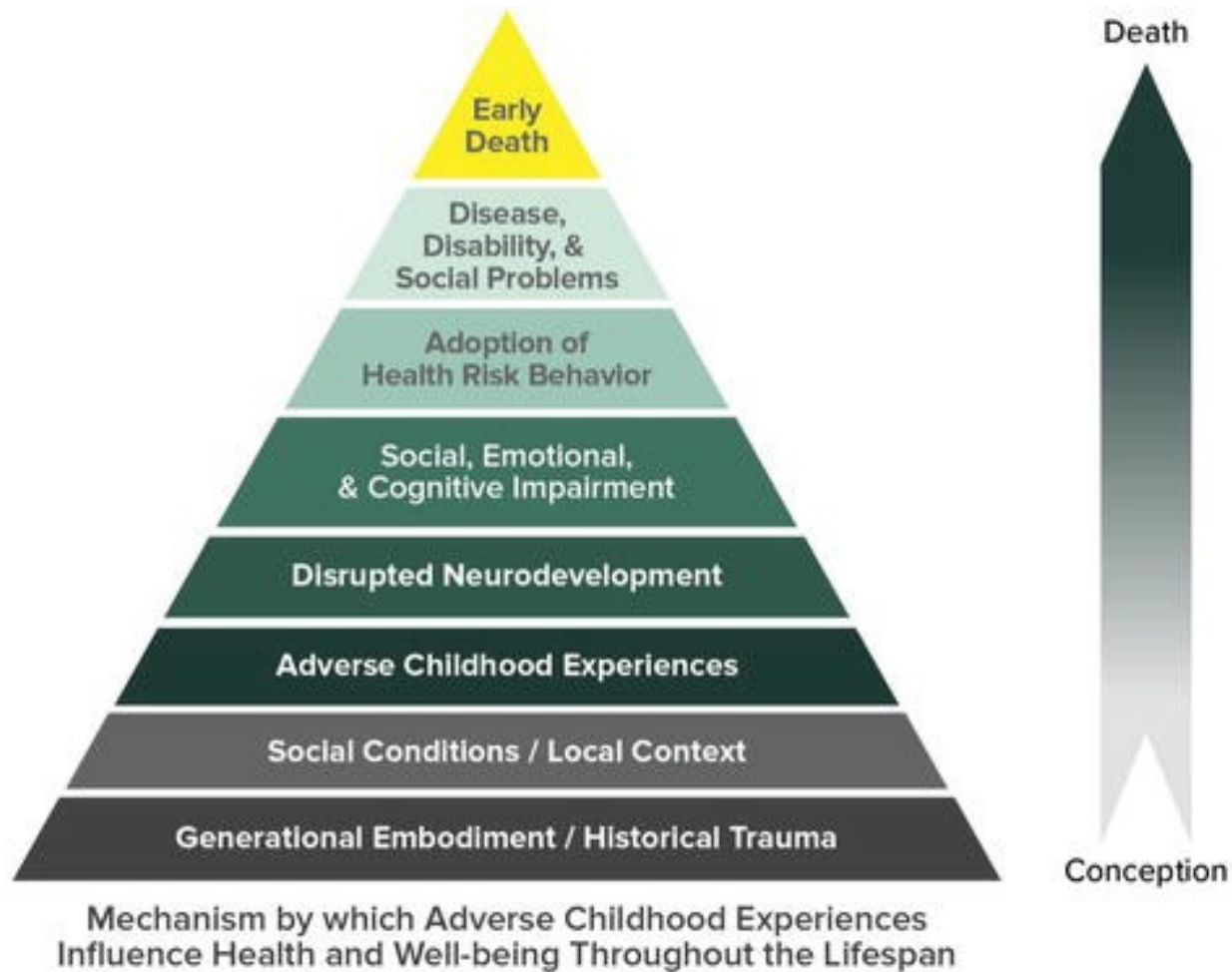
Great Lakes (HHS Region 5)

**MHTTC**

Mental Health Technology Transfer Center Network  
Funded by Substance Abuse and Mental Health Services Administration

# Community

(social and community context...pair of ACEs)



Great Lakes (HHS Region 5)

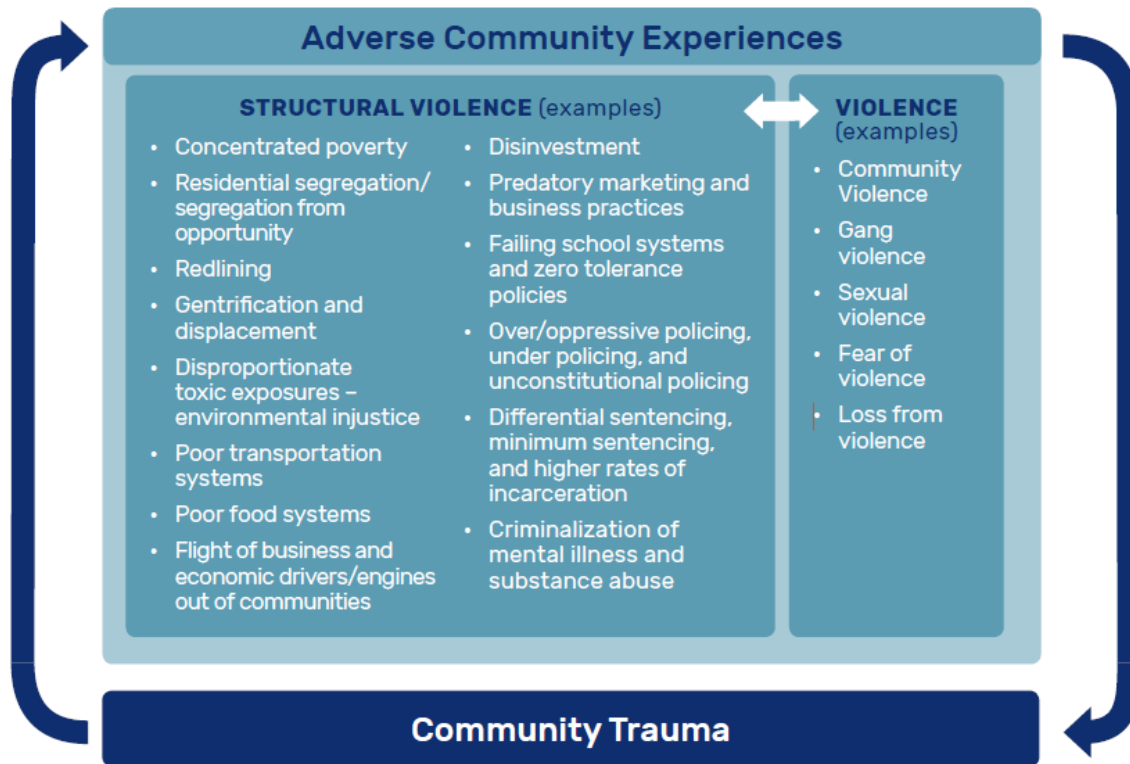
**MHTTC**

Mental Health Technology Transfer Center Network  
Funded by Substance Abuse and Mental Health Services Administration

# Community

(social and community context...pair of ACEs)

Adverse Community Experiences and Community Trauma: Mutually Reinforcing



Adverse Community Experiences: structural violence and violence.

- **Structural violence:** that which inflicts harm on communities.
- **Violence:** the intentional use of physical force or power, threatened or actual, against oneself, another person, or a group or community that either results in or has a high likelihood of resulting in injury, death, psychological or emotional harm, maldevelopment, or deprivation.

Reference: Prevention Institute. *What? Why? How? Answers to Frequently Asked Questions about the Adverse Community Experiences and Resilience Framework*. Prevention Institute. 2017.



Great Lakes (HHS Region 5)

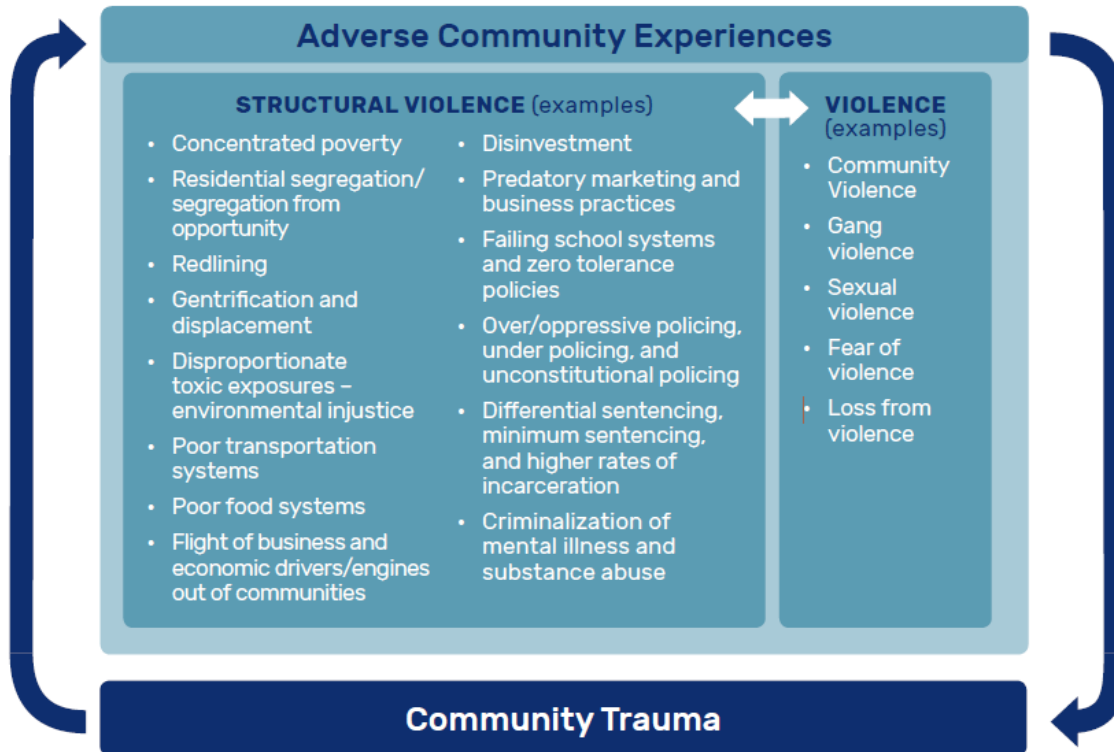
MHTTC

Mental Health Technology Transfer Center Network  
Funded by Substance Abuse and Mental Health Services Administration

# Community

(social and community context...pair of ACEs)

## Adverse Community Experiences and Community Trauma: Mutually Reinforcing



- Adverse Childhood Experiences “have been linked to poor health outcomes and shorter lifespans.
- Community trauma contributes to and exacerbates ACEs, because 1) it increases risk factors that make ACEs more likely to occur, and 2) it reduces resilience factors which are protective against the impact of ACEs.
- It increases risk, for example, because Adverse Community Experiences contribute to trauma across the community, often on top of the trauma that individuals may already be experiencing, creating negative cumulative impact.”

Reference: Prevention Institute. *What? Why? How? Answers to Frequently Asked Questions about the Adverse Community Experiences and Resilience Framework*. Prevention Institute. 2017.



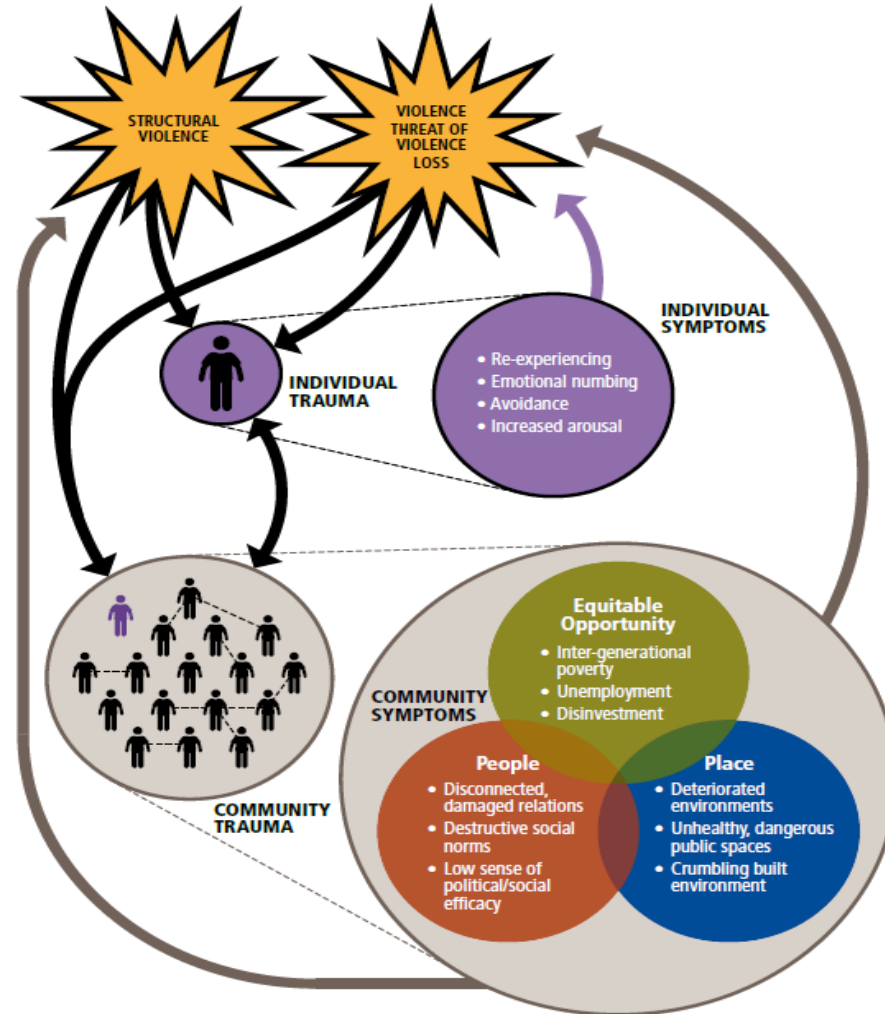
Great Lakes (HHS Region 5)

MHTTC

Mental Health Technology Transfer Center Network  
Funded by Substance Abuse and Mental Health Services Administration

# Community

(social and community context... individual within community context)



Reference: *The Production of Trauma from Violence in Adverse Community Experiences and Resilience, A Framework for Addressing and Preventing Community Trauma*, Prevention Institute, 2015.



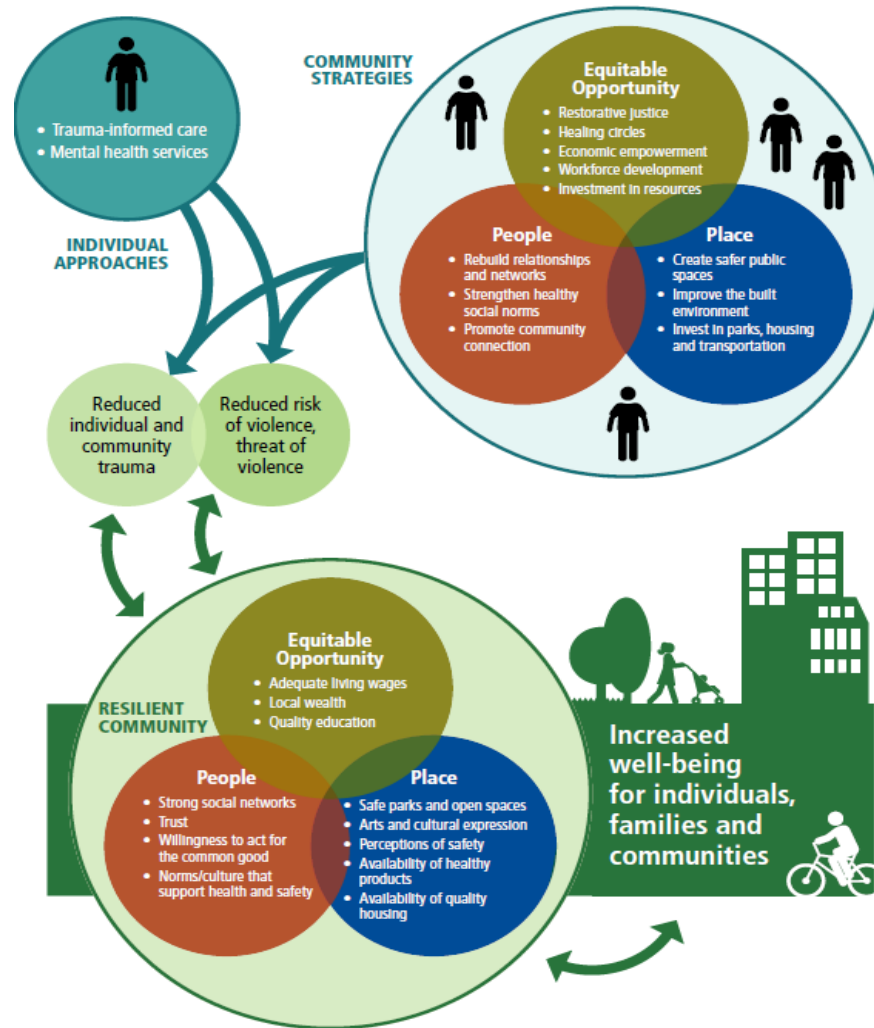
Great Lakes (HHS Region 5)

MHTTC

Mental Health Technology Transfer Center Network  
Funded by Substance Abuse and Mental Health Services Administration

# Community

(social and community context... individual within community context)



Reference: Promoting Community Resilience: From Trauma to Wellbeing in *Adverse Community Experiences and Resilience, A Framework for Addressing and Preventing Community Trauma*, Prevention Institute, 2015.



Great Lakes (HHS Region 5)

MHTTC

Mental Health Technology Transfer Center Network  
Funded by Substance Abuse and Mental Health Services Administration

# Reflection

“Structural Lens”

*What comes to mind?*



Great Lakes (HHS Region 5)

MHTTC

Mental Health Technology Transfer Center Network  
Funded by Substance Abuse and Mental Health Services Administration

# Structural Framework

(social and community context...structural context)



- **Structural drivers:** the distribution of power, money, and resources – which are equitable or not.
- “structural processes, such as political and economic power, the global distribution of wealth, and the oppressions derived from social class, structural racism, and sexism (to name a few)”
- **Structural Stigma**
  - Societal level:** subordinating BH to PH
  - Individual level:** labeling, othering
- “Structural stigma around mental illness disease state refers to the inequitable deprioritisation, devaluation, and othering of mental health and substance misuse health (compared with physical health) within our health-care delivery, governance, knowledge building, and training systems.”

Reference: Prevention Institute. *What? Why? How? Answers to Frequently Asked Questions about the Adverse Community Experiences and Resilience Framework*.  
Prevention Institute. 2017. [Structural stigma in mental illness - The Lancet](#)



Great Lakes (HHS Region 5)

MHTTC

Mental Health Technology Transfer Center Network  
Funded by Substance Abuse and Mental Health Services Administration



# Structural Framework

(social and community context...structural access to opportunity)



- Holistic Approach
- Social-Cultural-Structural Lens
- Structural Competency involves recognizing the structures that shape social drivers and clinical interactions
- Structural Competency involves developing an extra-clinical language of structure

Reference: Pinones-Rivera, C. et al. (2024) "Structural Competency in global perspective," *Global Public Health*; Stonington, S.D. et al., (2018) Case Studies in Social Medicine—Attending to Structural Forces in Clinical Practice, *NEJM*; Weiss, M.G. et al., (2021) Culture and Social Structure in Comprehensive Case Formulation, *The Journal of Nervous and Mental Disease*



Great Lakes (HHS Region 5)

MHTTC

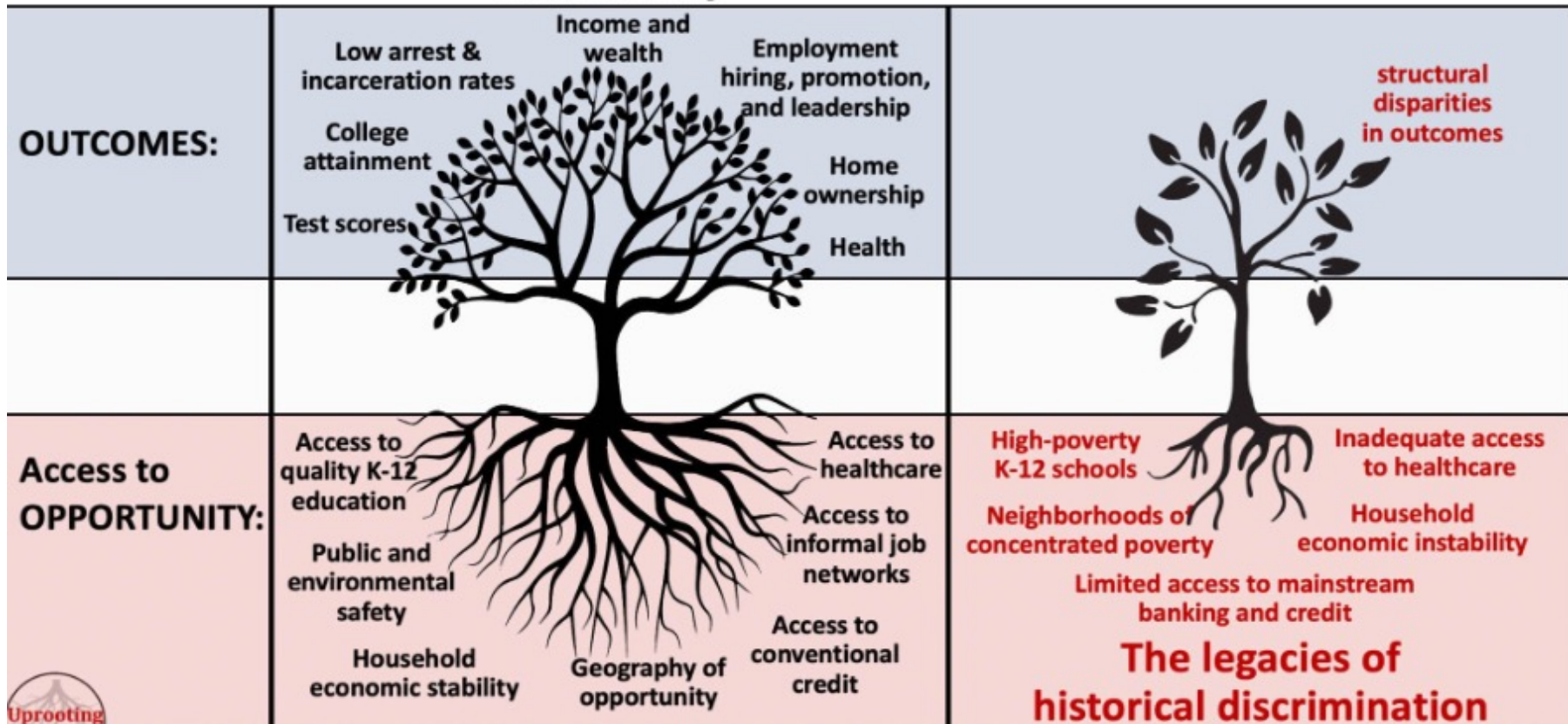
Mental Health Technology Transfer Center Network  
Funded by Substance Abuse and Mental Health Services Administration

# Structural Drivers

(education access and quality...structural context)

**In an equal-opportunity meritocracy**

**With structural inequities**



Source: Ayo Heinegg Magwood of Uprooting Inequity LLC

© 2021 Uprooting Inequity LLC

Reference: [5 Approaches to Teaching About Structural Racism - Institute for Humane Education](#)



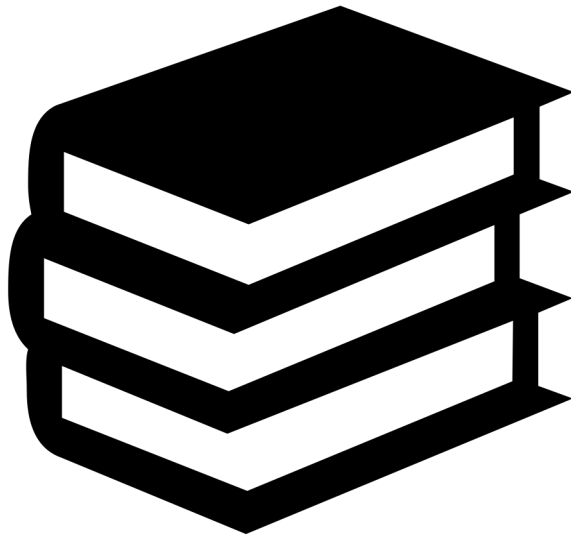
Great Lakes (HHS Region 5)

**MHTTC**

Mental Health Technology Transfer Center Network  
Funded by Substance Abuse and Mental Health Services Administration

# Structural Drivers

(education access and quality & healthcare access and quality...structural context)



- “Last month, North Carolina Republican Rep. Greg Murphy introduced the “Embracing anti-Discrimination, Unbiased Curricula, and Advancing Truth in Education (EDUCATE) Act” would amend the Higher Education Act of 1965 to prohibit medical schools from getting federal funding if they adopt policies or requirements related to DEI, including promoting beliefs that a person’s sex, race, ethnicity or skin color makes them a member of an oppressed group, or that the US is a “systemically” racist country.”

–CNN, April 17, 2024

Reference: [A lawmaker proposed a bill that would ban DEI in medical schools. Doctors say it could roll back progress toward improving Black maternal health. | CNN \(amproject.org\)](#)



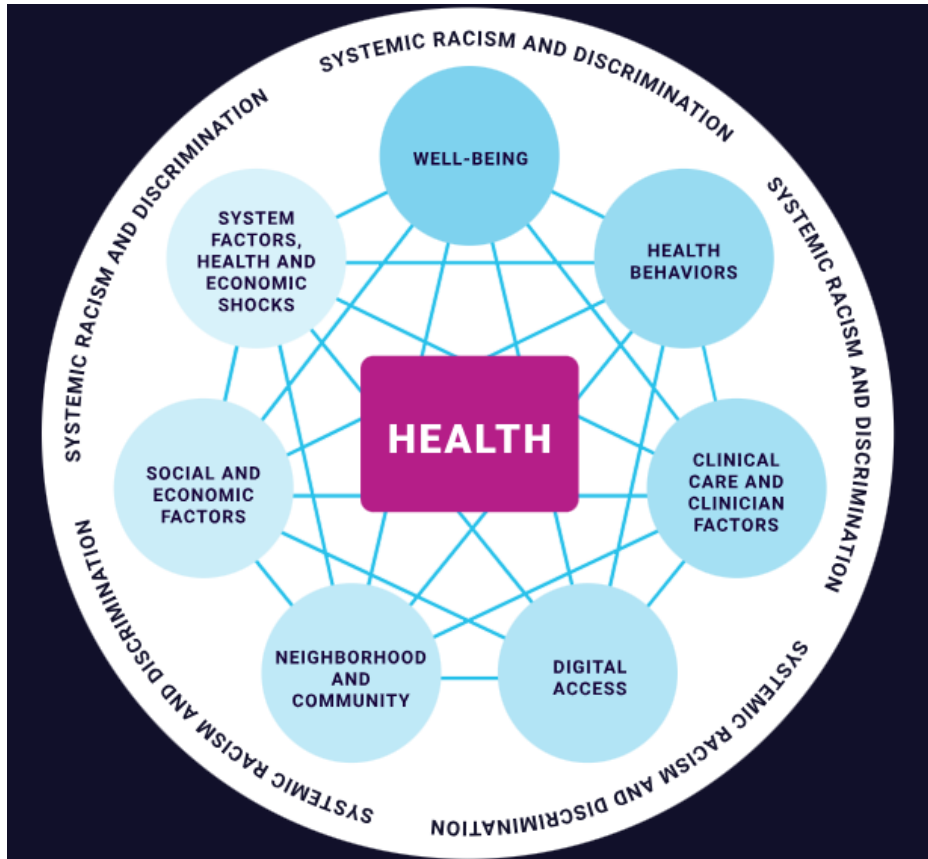
Great Lakes (HHS Region 5)

**MHTTC**

Mental Health Technology Transfer Center Network  
Funded by Substance Abuse and Mental Health Services Administration

# Systemic Discrimination

(education access and quality & healthcare access and quality...structural drivers)



- “Most evaluations of health equity policy have focused on the effects of individual laws. However, multiple laws’ combined effects better reflect the crosscutting nature of structurally racist legal regimes.”
- structural = systemic
- multidimensional ways it functions across institutions and systems (for example, education, housing, criminal legal, and health care)

Reference: [Legislating Inequity: Structural Racism In Groups Of State Laws And Associations With Premature Mortality Rates | Health Affairs](#)  
October 2023



Great Lakes (HHS Region 5)

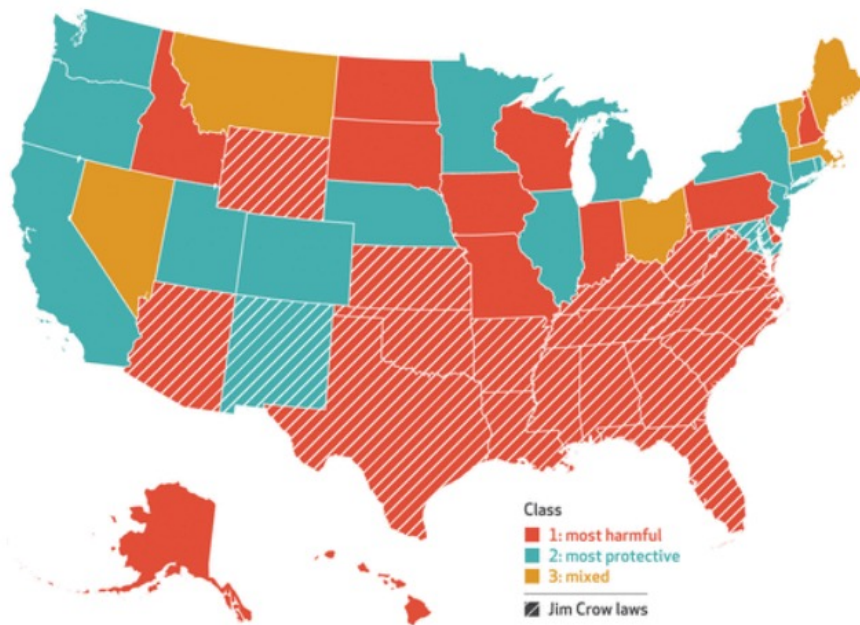
MHTTC

Mental Health Technology Transfer Center Network  
Funded by Substance Abuse and Mental Health Services Administration

# Systemic Discrimination

(education access and quality & healthcare access and quality...structural drivers)

**Exhibit 2** Regional patterning of latent classes of state structural racism-related laws, 2013



- structural = systemic
- multidimensional ways it functions across institutions and systems (for example, education, housing, criminal legal, and health care)
- **“Our findings reflect the persistent aftereffects of Jim Crow on present-day laws and politics.”**

Reference: [Legislating Inequity: Structural Racism In Groups Of State Laws And Associations With Premature Mortality Rates | Health Affairs](#) October 2023; Structural Racism and Health (rwjf.org)



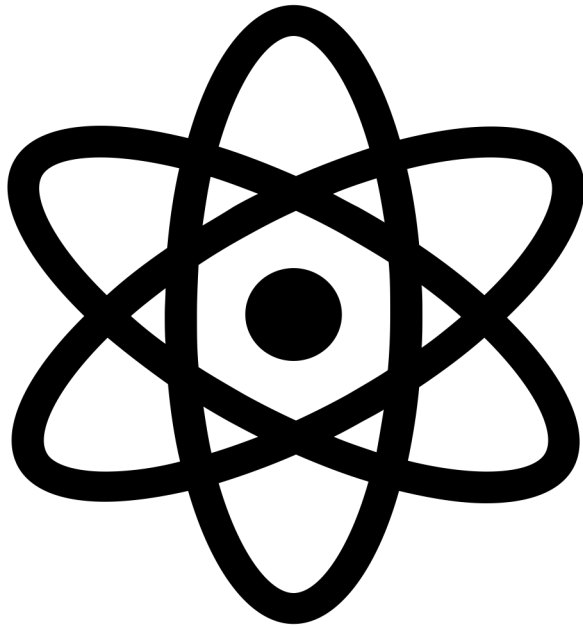
Great Lakes (HHS Region 5)

MHTTC

Mental Health Technology Transfer Center Network  
Funded by Substance Abuse and Mental Health Services Administration

# Political

(economic context...to political drivers)



- “political determinants of health are the policy choices that led to those SDOH in the first place.”
- “The political determinants of health involve the systematic process of structuring relationships, distributing resources, and administering power, operating simultaneously in ways that mutually reinforce or influence one another to shape opportunities that either advance health equity or exacerbate health inequities”
- “Somewhere upstream, decisions were made to divert the river to benefit certain people and harm others, and decisions were made to place certain types of people on specific banks of the river while placing others elsewhere.”

References: Dawes, D.E. “How Does Our Political System Influence Mental Health?” Robert Wood Johnson Foundation  
[How Does Our Political System Influence Mental Health? \(rwjf.org\)](http://rwjf.org); [What Are Political Determinants of Health & Do They Differ from SDOH? \(patientengagementhit.com\)](http://patientengagementhit.com)



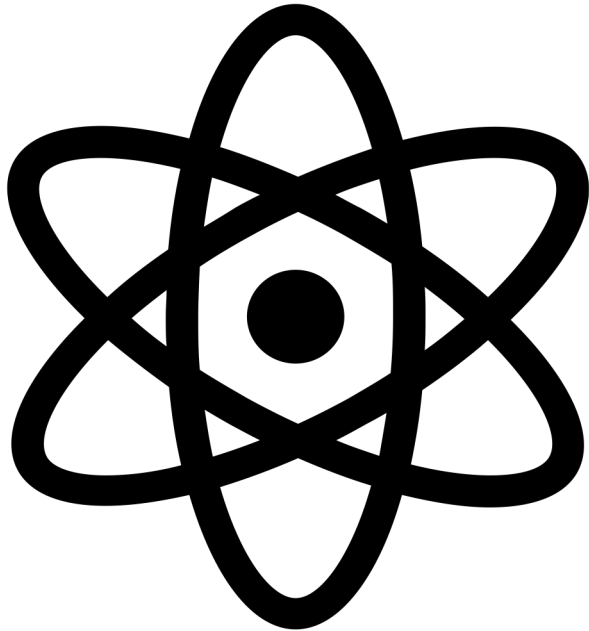
Great Lakes (HHS Region 5)

MHTTC

Mental Health Technology Transfer Center Network  
Funded by Substance Abuse and Mental Health Services Administration

# Political

(economic context...to political drivers)



## 3 Political Drivers of Health

- VOTING
- GOVERNMENT
- POLICY

References: Dawes, D.E. "How Does Our Political System Influence Mental Health?" Robert Wood Johnson Foundation  
[How Does Our Political System Influence Mental Health? \(rwjf.org\)](http://www.rwjf.org)



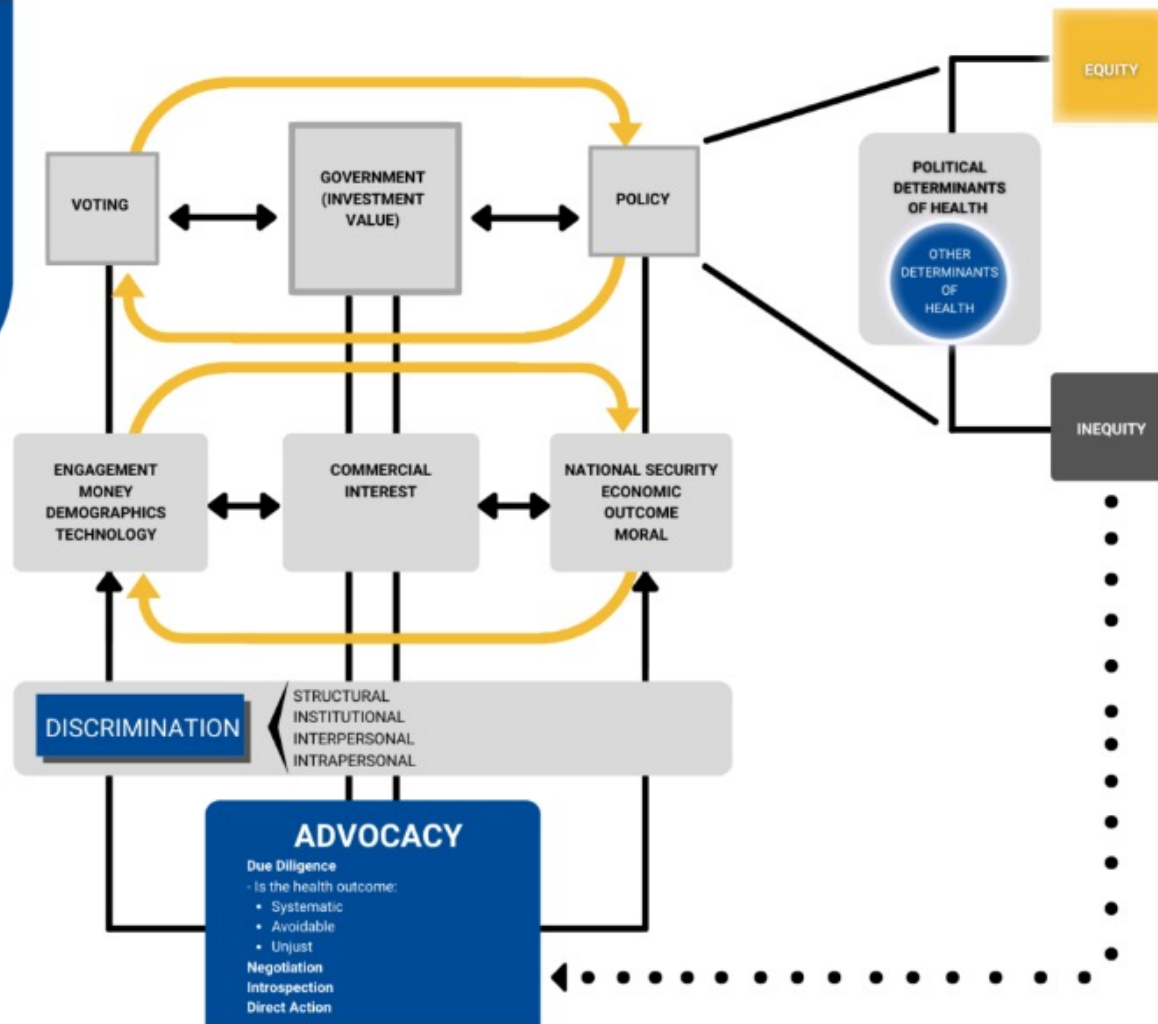
Great Lakes (HHS Region 5)

MHTTC

Mental Health Technology Transfer Center Network  
Funded by Substance Abuse and Mental Health Services Administration

# Political

## POLITICAL DETERMINANTS OF HEALTH MODEL



Reference: [Political Determinants of Health - Satcher Health Leadership Institute \(satcherinstitute.org\)](http://satcherinstitute.org)



Great Lakes (HHS Region 5)

MHTTC

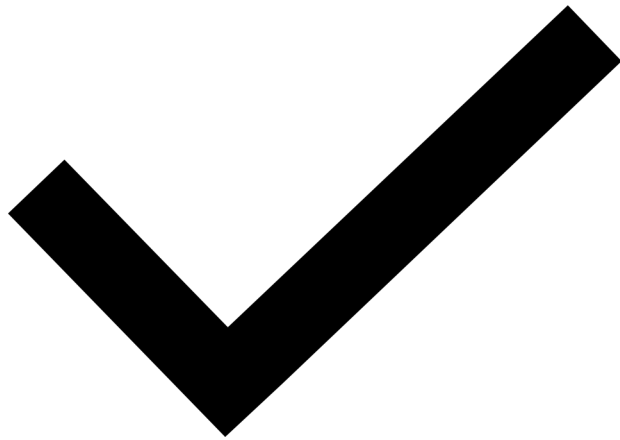
Mental Health Technology Transfer Center Network  
Funded by Substance Abuse and Mental Health Services Administration



# Political

(economic context...to political drivers)

## VOTING:



- “...the connection between voting and health is broken if the people who most urgently need to affect change are targets of voter suppression carried out through voter identification laws, purging voter rolls of irregular voters, minimizing early voting opportunities, and limiting polling places.
- Only when we can all exercise our right to vote do we have the agency and power to improve our access to mental healthcare and, with it, our health.”

Reference: Robert Wood Johnson Foundation, “How Does Our Political System Influence Mental Health?”  
[How Does Our Political System Influence Mental Health? \(rwjf.org\)](http://www.rwjf.org)



Great Lakes (HHS Region 5)

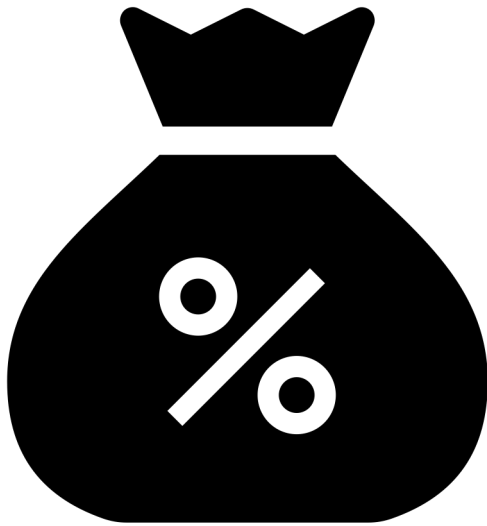
**MHTTC**

Mental Health Technology Transfer Center Network  
Funded by Substance Abuse and Mental Health Services Administration

# Political

(economic context...to political drivers)

## GOVERNMENT:



- “Making an economic case for better access to mental healthcare with both government and commercial interests is key to motivating stakeholders to make change because a health equity-focused policy must usually align with a government investment value.
- Racial mental health disparities cost tax payers **\$278 billion from 2016 to 2020.**
- The U.S. had nearly **117,000** premature mental and behavioral health-related deaths among Indigenous and racial or ethnic minorities during the same time period.”

Reference: Robert Wood Johnson Foundation, “How Does Our Political System Influence Mental Health?”

[How Does Our Political System Influence Mental Health? \(rwjf.org\)](https://www.rwjf.org/en/about-us/our-work/mental-health/how-does-our-political-system-influence-mental-health.html)



Great Lakes (HHS Region 5)

MHTTC

Mental Health Technology Transfer Center Network  
Funded by Substance Abuse and Mental Health Services Administration

# Political

(economic context...to political drivers)



## POLICY:

- “For policy to be passed, we need government and commercial incentives such as economic gain or better national security...
- ...we must once again show that today’s mental health disparities are a workforce issue. Employees with unresolved depression experience a 35 percent reduction in productivity, contributing to a loss to the U.S. economy of \$210.5 billion a year in absenteeism, reduced productivity, and medical costs.”

Reference: Robert Wood Johnson Foundation, “How Does Our Political System Influence Mental Health?”  
[How Does Our Political System Influence Mental Health? \(rwjf.org\)](http://www.rwjf.org)

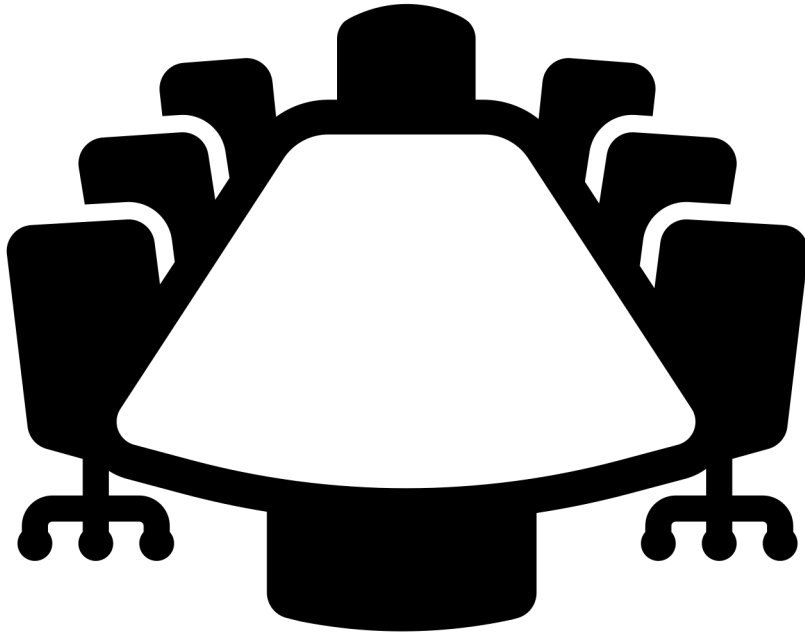


Great Lakes (HHS Region 5)

MHTTC

Mental Health Technology Transfer Center Network  
Funded by Substance Abuse and Mental Health Services Administration

# Commercial



- Commercial determinants or drivers of health {**CDOH**}
- Also: 'corporate determinants of health'
- developed by public health researchers
- looks at the behaviors and strategies of corporate actors, or business actors
- CDOH are under-explored yet have value in explaining how corporate power affects public health

Reference: Mialon, M. (2020) "An overview of the commercial determinants of health," *Globalization and Health*; Ralston, R., Godziewski, C. & Brooks, E. (2023). "Reconceptualising the commercial determinants of health: bringing institutions in. *BMJ Global Health*. [Reconceptualising the commercial determinants of health: bringing institutions in - PMC \(nih.gov\)](#)



Great Lakes (HHS Region 5)

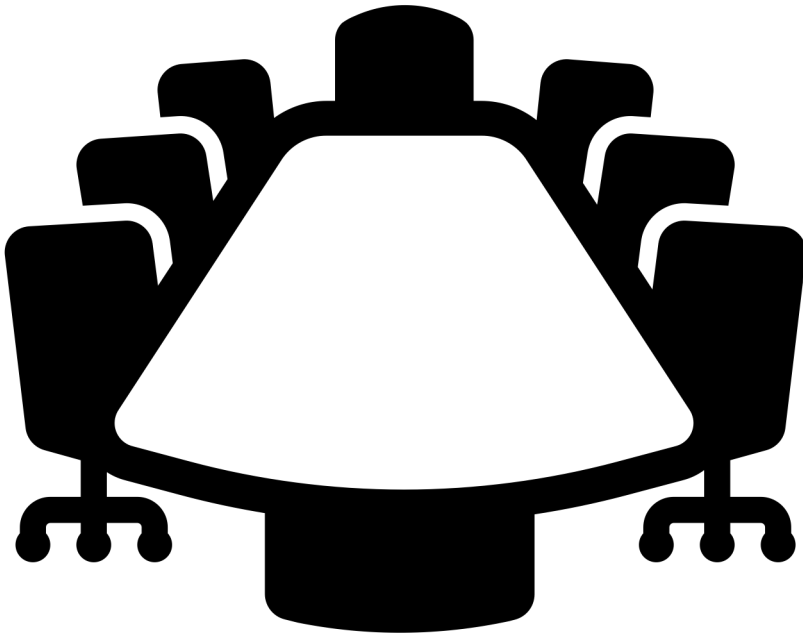
**MHTTC**

Mental Health Technology Transfer Center Network  
Funded by Substance Abuse and Mental Health Services Administration

# Commercial

## KEY FACTS:

- CDOH are the private sector activities that affect people's health, directly or indirectly, positively or negatively
- CDOH affect everyone
- CDOH impact a wide range of risk factors:
  - Smoking
  - air pollution
  - alcohol use
  - obesity and physical inactivity
  - health outcomes, such as noncommunicable diseases, communicable diseases and epidemics
  - injuries on roads and from weapons, violence
  - mental health conditions



Reference: [Commercial determinants of health \(who.int\)](http://www.who.int)



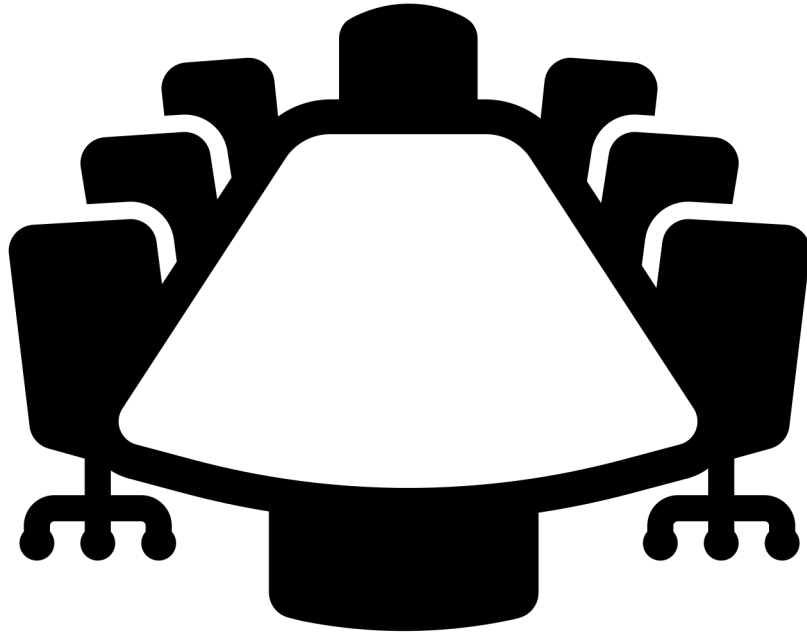
Great Lakes (HHS Region 5)

MHTTC

Mental Health Technology Transfer Center Network  
Funded by Substance Abuse and Mental Health Services Administration

# Commercial

## {CDOH} examples



- tobacco industry = Big Tobacco
- alcohol industry = Big Alcohol
- food industry = Big Food
- pharmaceutical industry = Big Pharma

Reference: Mialon, M. (2020) "An overview of the commercial determinants of health," *Globalization and Health*; Ralston, R., Godziewski, C. & Brooks, E. (2023). "Reconceptualising the commercial determinants of health: bringing institutions in. *BMJ Global Health*. [Reconceptualising the commercial determinants of health: bringing institutions in - PMC \(nih.gov\)](#)



Great Lakes (HHS Region 5)

MHTTC

Mental Health Technology Transfer Center Network  
Funded by Substance Abuse and Mental Health Services Administration

# Legal

(education and healthcare access ad quality...to legal drivers)



## Legal determinants, or drivers, of health {LDOH}

- #1 Law can translate vision into action for Sustainable Development
- #2 Law can strengthen governance of health institutions
- #3 Law can implement fair, evidence-based health interventions
- #4 Law can build and strengthen legal capacities for health

Reference: 1-Gostin, L.O. et al. (2019) "The legal determinants of health: harnessing the power of law for global health and sustainable development," *The Lancet*



Great Lakes (HHS Region 5)

MHTTC

Mental Health Technology Transfer Center Network  
Funded by Substance Abuse and Mental Health Services Administration

# Legal

(education and healthcare access ad quality...to legal drivers)



## Legal determinants, or drivers, of health {LDOH}

- #1 Law can translate vision into action for Sustainable Development
- #2 Law can strengthen governance of health institutions
- #3 Law can implement fair, evidence-based health interventions
- #4 Law can build and strengthen legal capacities for health

Reference: 1-Gostin, L.O. et al. (2019) "The legal determinants of health: harnessing the power of law for global health and sustainable development," *The Lancet*



Great Lakes (HHS Region 5)

MHTTC

Mental Health Technology Transfer Center Network  
Funded by Substance Abuse and Mental Health Services Administration



# Legal

(education and healthcare access ad quality...to legal drivers)



- **“Young environmental activists prevail in first-of-its-kind climate change trial in Montana” - August 14 2023**
  - “a ground-breaking legal victory: a Montana judge said state agencies were violating their constitutional right to a clean and healthful environment by allowing fossil fuel development
  - It marks the first time a U.S. court has ruled against a government for violating a constitutional right based on climate change, said Harvard Law School Professor Richard Lazarus.”
- **“Judge sides with young activists in climate change trial in Montana” –August 15, 2023**
  - “aged 5 to 22. They allege that Montana's energy policies violated their right to a clean and healthful environment, which is guaranteed in their state's constitution. The state judge agreed”

References: [Young Activists Just Won a Landmark Climate Trial in Montana. What to Know & Why It's a Gamechanger. \(globalcitizen.org\)](https://www.globalcitizen.org/en/content/young-activists-just-won-a-landmark-climate-trial-in-montana-what-to-know-why-its-a-gamechanger/); [Judge sides with young activists in climate change trial in Montana : NPR](https://www.npr.org/2023/08/15/11800000000/judge-sides-with-young-activists-in-climate-change-trial-in-montana); [Young Activists Just Won a Landmark Climate Trial in Montana. What to Know & Why It's a Gamechanger. \(globalcitizen.org\)](https://www.globalcitizen.org/en/content/young-activists-just-won-a-landmark-climate-trial-in-montana-what-to-know-why-its-a-gamechanger/)



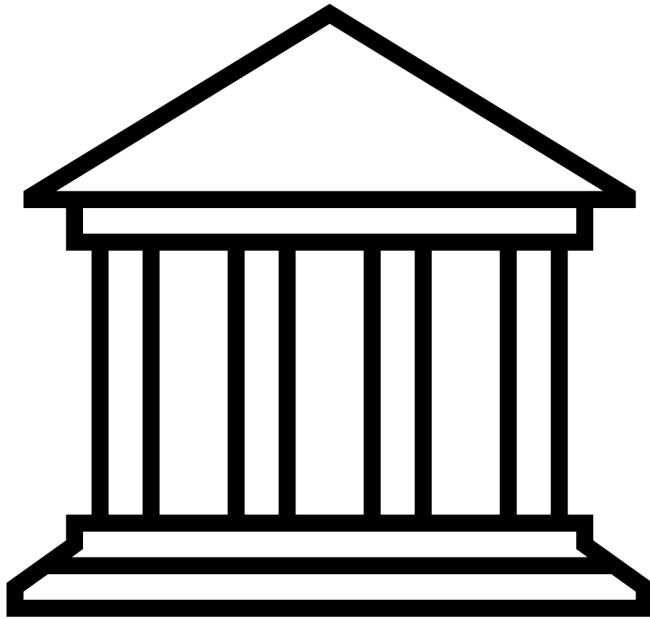
Great Lakes (HHS Region 5)

**MHTTC**

Mental Health Technology Transfer Center Network  
Funded by Substance Abuse and Mental Health Services Administration

# Legal

(education and healthcare access ad quality...to legal drivers)



- A powerful precedent for the role of “green amendments” in climate litigation
- Green Amendments:
  - “Many states are following the lead of Montana and Pennsylvania by placing the language in the Bill of Rights. These amendments, also called Green Amendments, liken rights of religious expression and speech to the right to clean air, and water. They serve to emphasize environmental health and safety as being part of basic civil liberties.”

Reference: [Green Amendment | National Caucus of Environmental Legislators \(ncelenviro.org\)](https://www.ncelenviro.org/green-amendment)



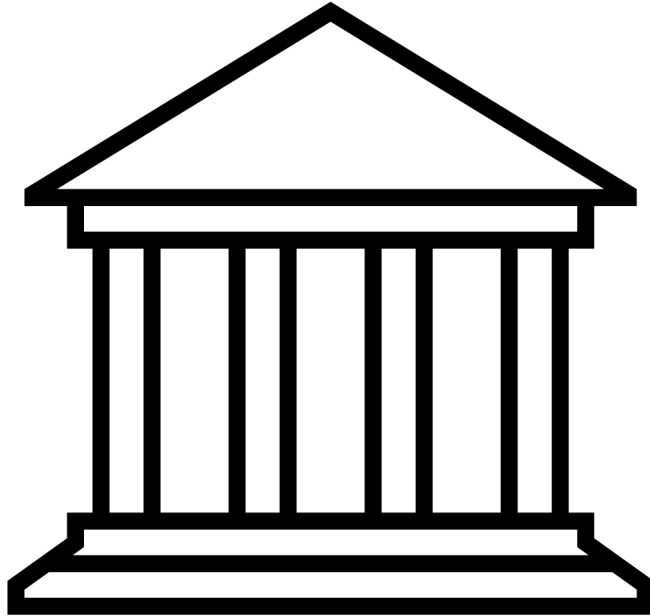
Great Lakes (HHS Region 5)

MHTTC

Mental Health Technology Transfer Center Network  
Funded by Substance Abuse and Mental Health Services Administration

# Legal

(healthcare access ad quality...to legal drivers)



- United States: a country with a national state of emergency for LGBTQ+ Americans
- This national state of emergency follows an unprecedented increase in anti-LGBTQ+ legislative bills being introduced to state legislatures across the country, with many signed into state law.
- 2023: more than 725 bills were introduced to state legislatures with more than 75 signed into law
- many are attacks on transgender health care
- “These Anti-LGBTQ+ laws are structural barriers in healthcare, or health inequities, and a context of “compounded colonization” among American Indian and Alaska Native LGBTQ+ peoples or Two-Spirit peoples.”

Reference: [Mapping the Landscape of LGBTQ+ Hope Spots: An Arctic Equality Map | The Arctic Institute – Center for Circumpolar Security Studies](#)



Great Lakes (HHS Region 5)

MHTTC

Mental Health Technology Transfer Center Network  
Funded by Substance Abuse and Mental Health Services Administration

# Legal



- Holistic Approach
- LDOH shape SDOH or SDOW
- Micro-mezzo-macro are interrelated
- Individual-community-state-nation

Reference: Stonington, S.D. et al., (2018) Case Studies in Social Medicine—Attending to Structural Forces in Clinical Practice, *NEJM*; 5-Weiss, M.G. et al., (2021) Culture and Social Structure in Comprehensive Case Formulation, *The Journal of Nervous and Mental Disease*



Great Lakes (HHS Region 5)

MHTTC

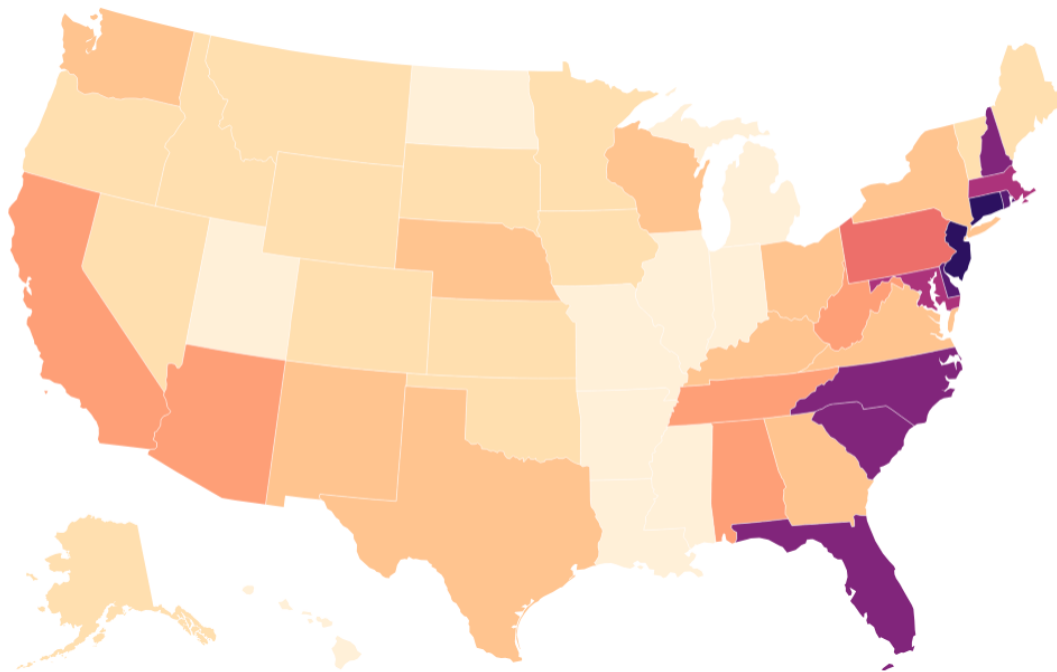
Mental Health Technology Transfer Center Network  
Funded by Substance Abuse and Mental Health Services Administration

# Interventions

## Where high PFAS levels are most common

Early PFAS testing by the EPA found a high percentage of public water systems in several states had levels exceeding new federal standards for at least one type of PFAS. As of early 2024, the EPA's testing had covered 3,764 public drinking water systems out of 154,106.

% systems exceeding standard  
5 10 15 20 25 30 35 40 50



## NEWS RELEASES

April 17, 2024

**“Removing PFAS from public water systems will cost billions and take time – here are ways to filter out some harmful ‘forever chemicals’ at home”**

- Environmental Protection Agency in April 2024 finalized the first enforceable federal limits for six types of PFAS in drinking water systems.

Reference: [Removing PFAS from public water will cost billions and take time – here are ways to filter out some harmful ‘forever chemicals’ at home \(theconversation.com\)](https://theconversation.com/removing-pfas-from-public-water-will-cost-billions-and-take-time-here-are-ways-to-filter-out-some-harmful-forever-chemicals-at-home)



Great Lakes (HHS Region 5)

MHTTC

Mental Health Technology Transfer Center Network  
Funded by Substance Abuse and Mental Health Services Administration

# Interventions



## **Social Prescribing**

- There's no one definition of social prescribing, but it's understood as a process that allows healthcare and social care providers to write prescriptions or referrals to community resources and opportunities that help address SDOH/SDOW
- **'arts on prescription'**
- **Forest bathing**

Reference: [International Arts + Mind Lab: The Center for Applied Neuroaesthetics \(artsandmindlab.org\)](https://artsandmindlab.org)



Great Lakes (HHS Region 5)

**MHTTC**

Mental Health Technology Transfer Center Network  
Funded by Substance Abuse and Mental Health Services Administration

# Interventions

## *NEWS RELEASES*

Tuesday, April 16, 2024

### “Microplastics, algal blooms, seafood safety are public health concerns addressed by new Oceans and Human Health Centers”

- To address plastics and other problems that could affect human health, the NIH and the U.S. National Science Foundation (NSF) are jointly funding four new Centers for Oceans and Human Health and renewing two centers as part of a marine-related health research program.
- nexus of environmental science, climate change, and human health in the ocean or Great Lakes
- Plan is to invest more than \$42 million over five years for the centers program, continuing a two-decade long collaboration.

Reference: [Microplastics, algal blooms, seafood safety are public health concerns addressed by new Oceans and Human Health Centers | National Institutes of Health \(NIH\)](#)



Great Lakes (HHS Region 5)

MHTTC

Mental Health Technology Transfer Center Network  
Funded by Substance Abuse and Mental Health Services Administration

# Interventions

## Rights of Nature



- Rights of Nature is the recognition and honoring that Nature has rights
- the recognition that our ecosystems – including trees, oceans, animals, mountains – have rights just as human beings have rights
- And we – the people – have the legal authority and responsibility to enforce these rights on behalf of ecosystems
- 2008: Ecuador became the first country in the world to recognize the Rights of Nature in its national constitution
- Pittsburgh became the first large U.S. city to enact a local law recognizing the rights of Nature

Reference: [What are the Rights of Nature? - Global Alliance for the Rights of Nature \(garn.org\)](#);  
[Rights of Nature: Timeline - CELDF - Protecting Nature and Communities](#)



Great Lakes (HHS Region 5)

MHTTC

Mental Health Technology Transfer Center Network  
Funded by Substance Abuse and Mental Health Services Administration



# Interventions

## Care Courts

Pathway through the CARE Court



- Paradigm shift
- connects a person in crisis with a court-ordered Care Plan for up to 12 months, with the possibility to extend for an additional 12 months
- CARE Court is an upstream diversion to prevent more restrictive conservatorships or incarceration
- CARE Court engagement begins with a petition to the Court from a wider range of individuals, including care providers, family members, first responders, or counties, among others
- If a participant cannot successfully complete a Care plan, the individual may be referred by the Court for a conservatorship, consistent with current law

Reference: [California homeless: How will CARE Courts work? – CalMatters](#); [Los Angeles County CARE Court \(lacourt.org\)](#)  
[CARE Court Framework](#)



Great Lakes (HHS Region 5)

MHTTC

Mental Health Technology Transfer Center Network  
Funded by Substance Abuse and Mental Health Services Administration

# Interventions

## Care Courts

### Pathway through the CARE Court



### Who can participate?

- 18 years of age or older.
- Diagnosed with a disorder within the "schizophrenia and other psychotic disorders" class of disorders and currently experiencing symptoms.
- Not clinically stabilized in ongoing treatment.
- The individual's mental health is substantially deteriorating, and they are unlikely to survive safely in the community without supervision AND/OR need services and support to prevent relapse and deterioration.
- Participation in a CARE Plan is the least restrictive alternative and the individual is likely to benefit from participation in a CARE Plan.

Reference: [California homeless: How will CARE Courts work? – CalMatters](#); [Los Angeles County CARE Court \(lacourt.org\) CARE Court Framework](#)



Great Lakes (HHS Region 5)

MHTTC

Mental Health Technology Transfer Center Network  
Funded by Substance Abuse and Mental Health Services Administration

# Action is Needed

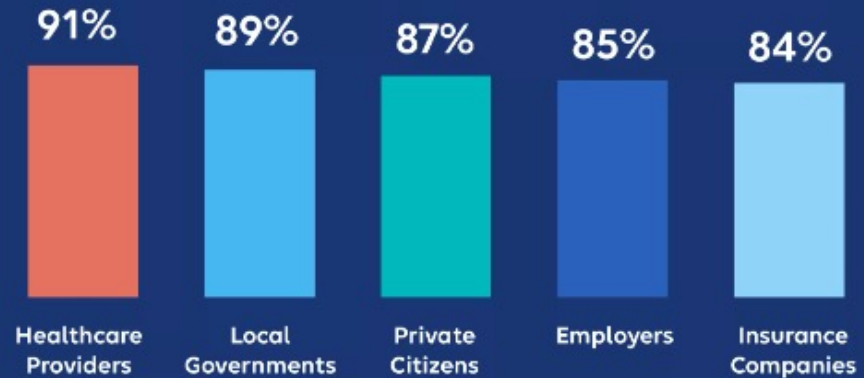


Americans believe that action is needed to address SDH, but no one entity should be held solely responsible for improving health.

- Who is responsible?
- What can we do?

## Who Should Be Responsible for Addressing SDH and Health Disparities?

Percentage of survey respondents who chose:



# U.S. DHHS: Call to Action

- Report: “Addressing Health-Related Social Needs in Communities Across the Nation”  
-November 2023
- *“HHS is issuing this Call to Action to catalyze efforts at the community level to encourage partnerships across sectors.”*
- *“HHS is calling upon individuals working in health care, social services, public and environmental health, government, and health information technology to partner and work together across silos to address health-related social needs<sup>1</sup> (HRSNs) through community partnerships to improve the health and well-being of every American.”*



Great Lakes (HHS Region 5)

MHTTC

Mental Health Technology Transfer Center Network  
Funded by Substance Abuse and Mental Health Services Administration

# U.S. DHHS: Call to Action

## Community Care Hub Conceptual Model\*

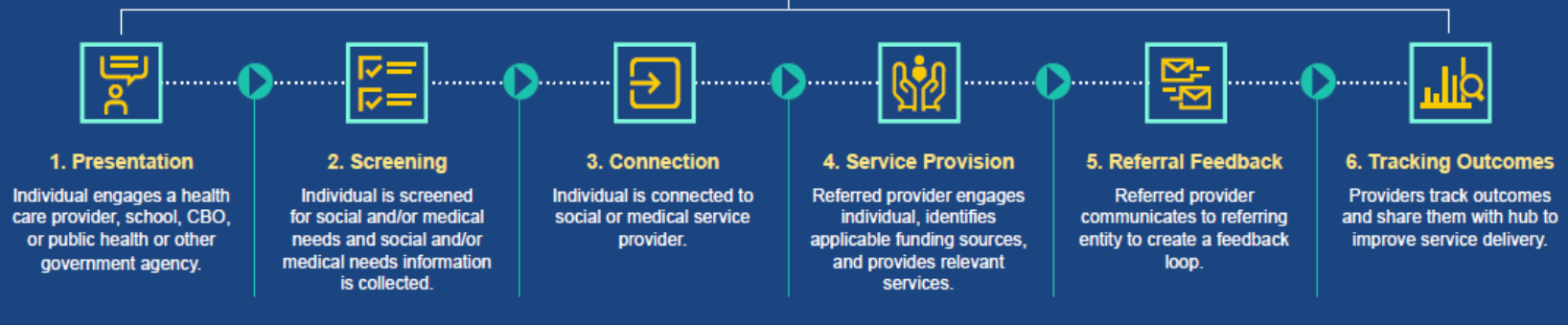
### Funding Sources

Including federal, state, local, philanthropic, and private funds



### Community Care Hub

Community Care Hub coordinates administration functions, funding, and operational infrastructure, including enabling health care contracting on behalf of a wider network of community-based organizations (CBOs) to align care and track outcomes to inform quality improvement and contractual requirements.



\*Conceptual model is evolving and may differ between communities. In practice, individuals may not move through this model in a linear fashion.

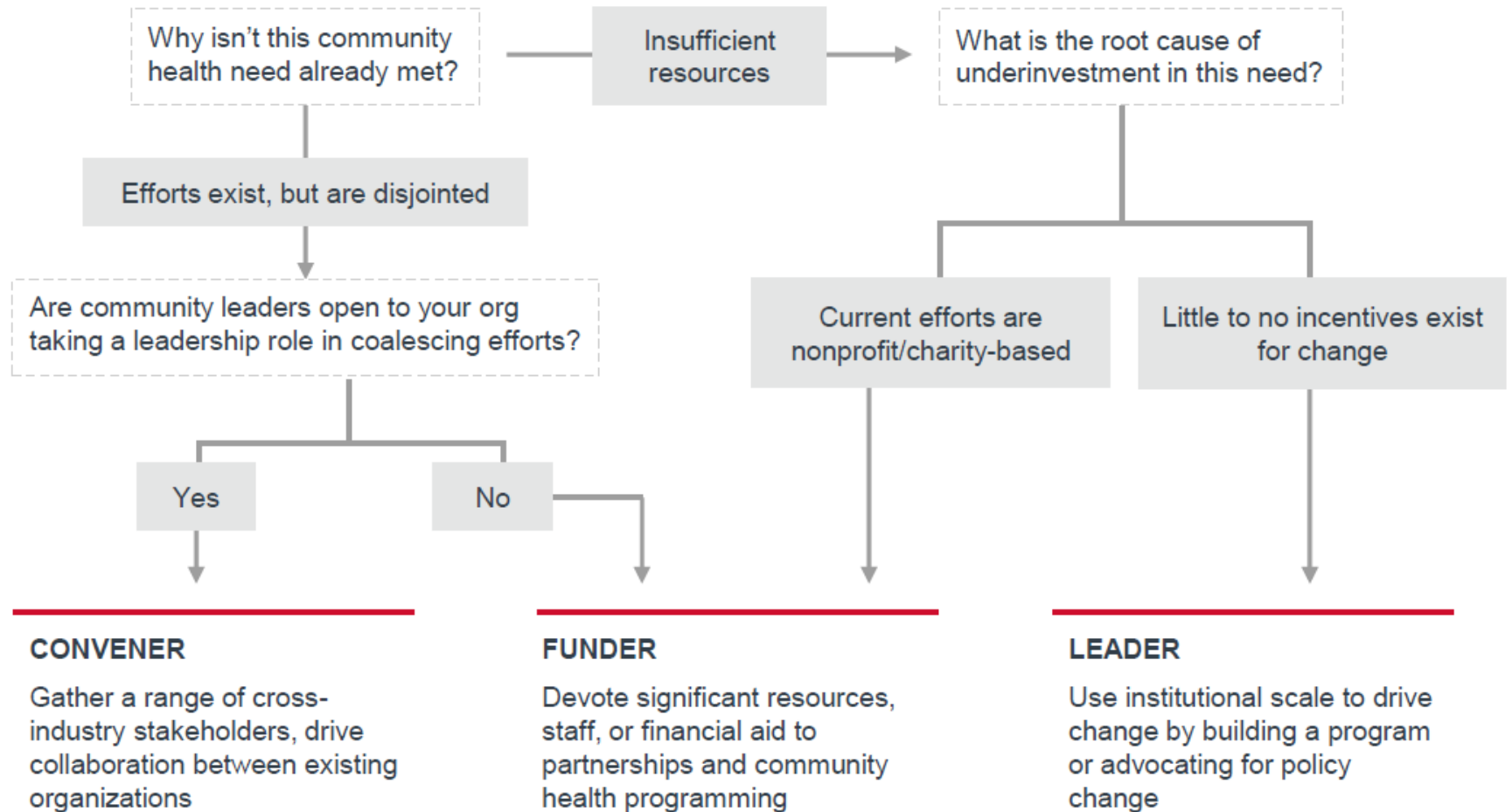


Great Lakes (HHS Region 5)

**MHTTC**

Mental Health Technology Transfer Center Network  
Funded by Substance Abuse and Mental Health Services Administration

# Decision Guide



Reference: Advisory Board, "How to address social determinants of health and improve medical outcomes, Key Takeaways from the 2019 Cross-Industry Value Summit Workshop."



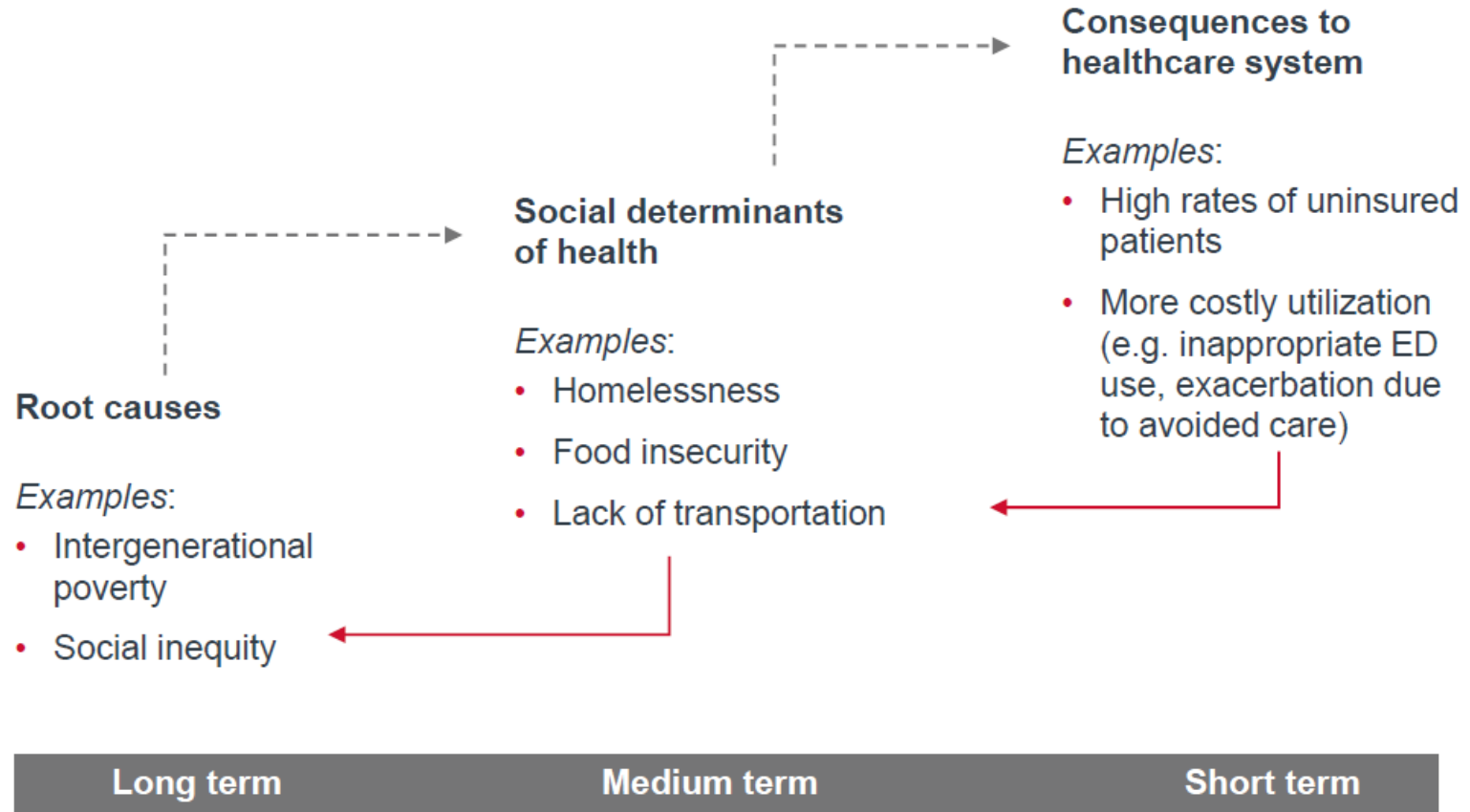
Great Lakes (HHS Region 5)

**MHTTC**

Mental Health Technology Transfer Center Network  
Funded by Substance Abuse and Mental Health Services Administration

# Decision Guide

- Focusing on consequences alone is insufficient



Reference: Advisory Board, "How to address social determinants of health and improve medical outcomes, Key Takeaways from the 2019 Cross-Industry Value Summit Workshop."



Great Lakes (HHS Region 5)

**MHTTC**

Mental Health Technology Transfer Center Network  
Funded by Substance Abuse and Mental Health Services Administration

# Working Together Across Silos

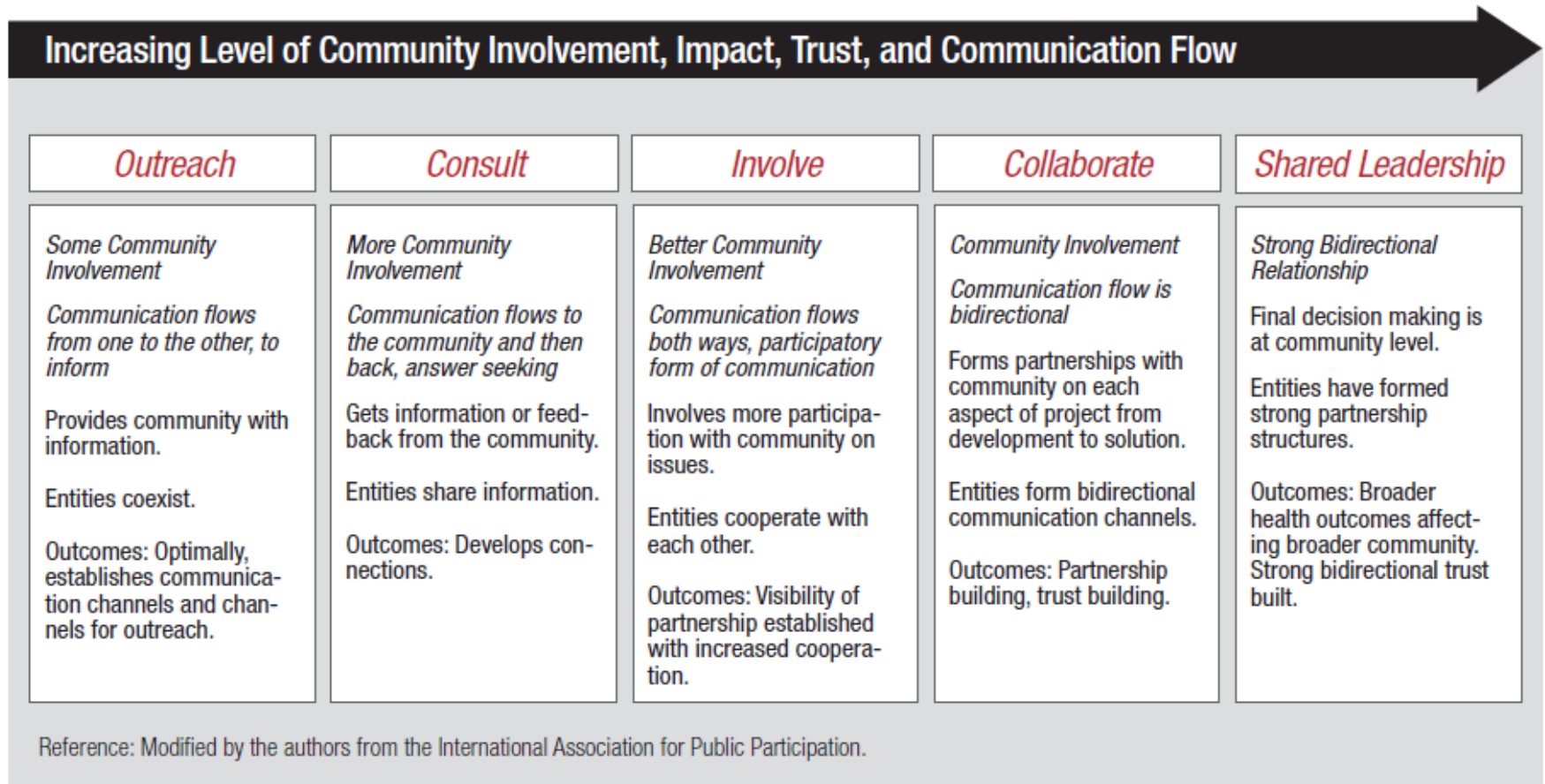


Figure 1.1. Community Engagement Continuum

Reference: McCloskey, D.J. et al. "Community Engagement: Definitions and Organizing Concepts from the Literature" in *Community Engagement: Definitions and Organizing Concepts from the Literature*



Great Lakes (HHS Region 5)

**MHTTC**

Mental Health Technology Transfer Center Network  
Funded by Substance Abuse and Mental Health Services Administration



*Thank You!*



Great Lakes (HHS Region 5)

**MHTTC**

Mental Health Technology Transfer Center Network  
Funded by Substance Abuse and Mental Health Services Administration