



MHTTC

Mental Health Technology Transfer Center Network

Funded by Substance Abuse and Mental Health Services Administration

Healing School Communities in the Context of Faith-Based Bullying

Session 1: What do we know?

Tuesday, July 23, 2024

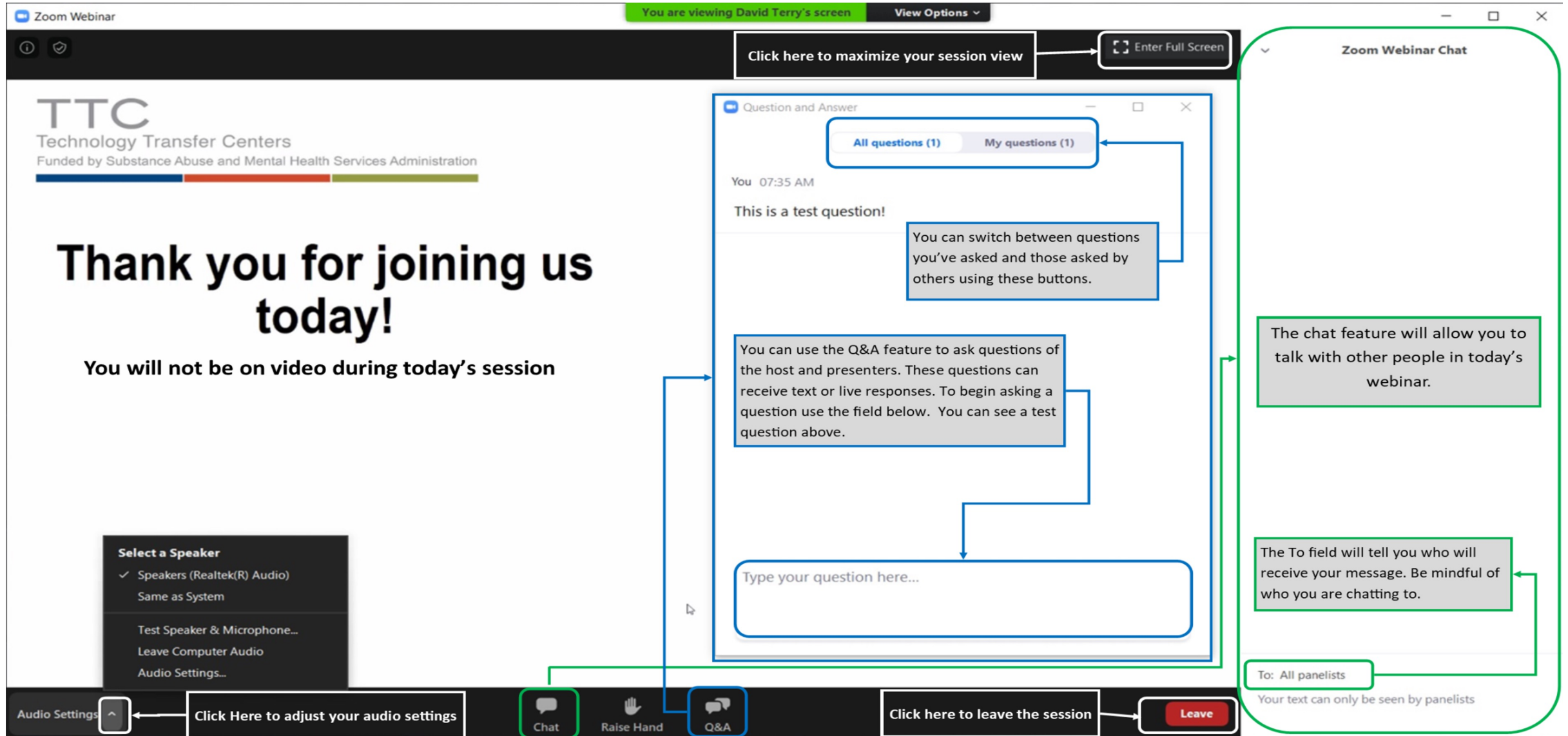
Housekeeping Items

- We have made every attempt to make today's presentation secure. If we need to end the presentation unexpectedly, we will follow-up using your registration information.
- All attendees are muted and cannot share video.
- Have a question for the presenters? Use the Q&A Pod
- The chat box is closed so that only panelists may share resources.
- This event is closed captioned!
- Having technical issues? Let us know in the Q&A Pod; if you get logged out, email us at networkoffice@mhttcnetwork.org
- You will receive an email following the presentation on how to access a certificate of attendance
- Follow us on social media: [X](#) [f](#) [in](#)
@MHTTCNetwork

Please Note:
The session recording will be posted on our website within a few days.

- Please Note**
- All attendees are muted
 - Today's session will be recorded

Get to know the Zoom Webinar interface



The screenshot shows a Zoom Webinar interface with several key elements and annotations:

- Header:** "Zoom Webinar" title bar, "You are viewing David Terry's screen", and "View Options" dropdown.
- Top Bar:** "Click here to maximize your session view" and "Enter Full Screen" button.
- Main Content:**
 - TTC Technology Transfer Centers logo and funding information.
 - Large text: "Thank you for joining us today!"
 - Text: "You will not be on video during today's session"
- Q&A Window:**
 - Buttons: "All questions (1)" and "My questions (1)".
 - Message: "You 07:35 AM: This is a test question!"
 - Text box: "Type your question here..."
 - Annotation: "You can switch between questions you've asked and those asked by others using these buttons."
 - Annotation: "You can use the Q&A feature to ask questions of the host and presenters. These questions can receive text or live responses. To begin asking a question use the field below. You can see a test question above."
- Zoom Webinar Chat:**
 - Text: "The chat feature will allow you to talk with other people in today's webinar."
 - Text: "The To field will tell you who will receive your message. Be mindful of who you are chatting to."
 - To field: "To: All panelists"
 - Text: "Your text can only be seen by panelists"
- Bottom Bar:**
 - Audio Settings dropdown (with "Click Here to adjust your audio settings" annotation).
 - Chat button (with "Click here to leave the session" annotation).
 - Raise Hand button.
 - Q&A button.
 - Leave button.

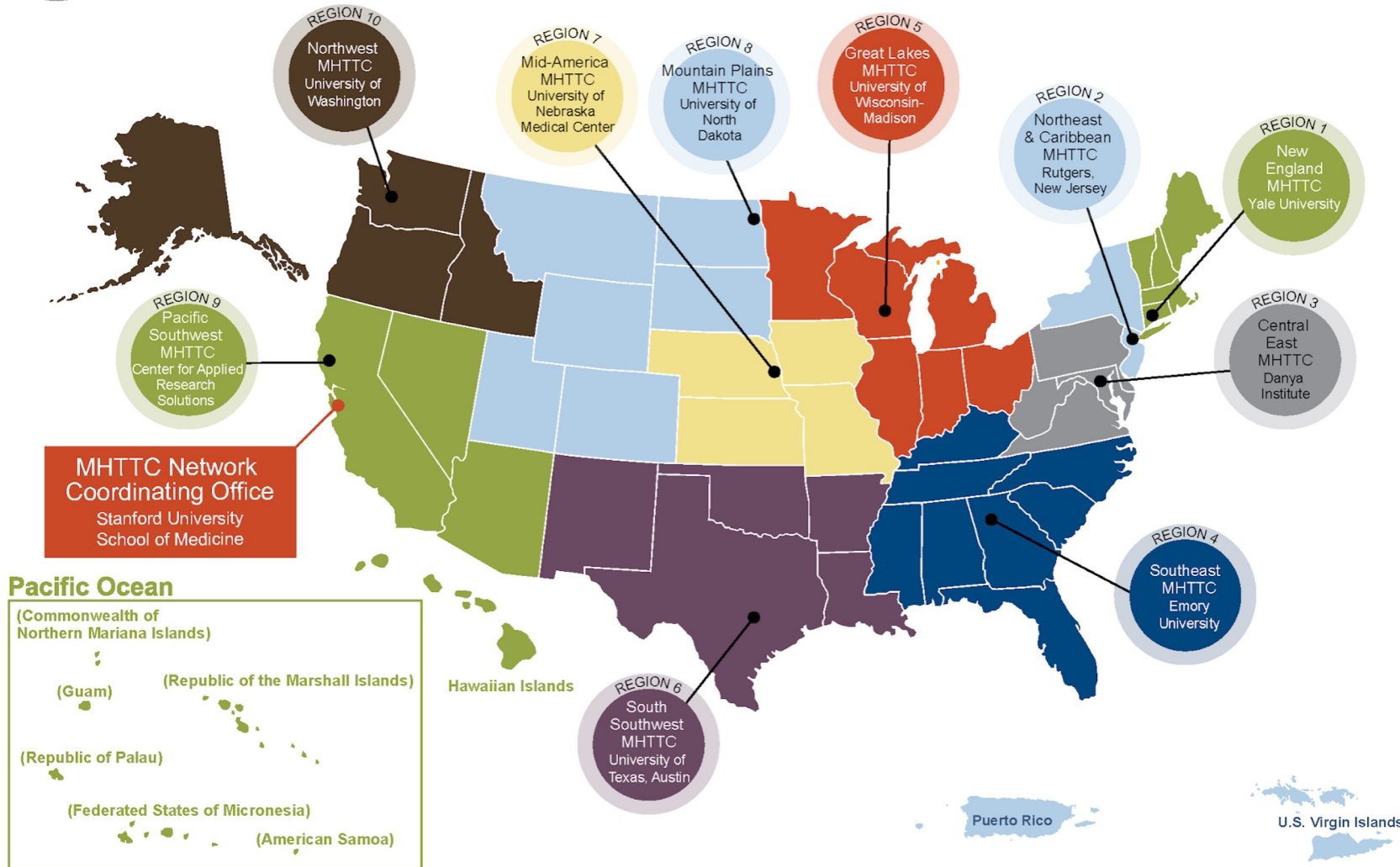
Connect with Your MHTTC at www.mhttcnetwork.org



MHTTC

Mental Health Technology Transfer Center Network
Funded by Substance Abuse and Mental Health Services Administration

MHTTC Network



Disclaimer

This presentation was prepared for the MHTTC Network under a cooperative agreement from the Substance Abuse and Mental Health Services Administration (SAMHSA). All material appearing in this presentation, except that taken directly from copyrighted sources, is in the public domain and may be reproduced or copied without permission from SAMHSA or the authors. Citation of the source is appreciated. Do not reproduce or distribute this presentation for a fee without specific, written authorization from the MHTTC Network Coordinating Office.

At the time of this presentation, Dr. Miriam E. Delphin-Rittmon served as Assistant Secretary for Mental Health and Substance Use in the U.S. Department of Health and Human Services (DHHS) and the Administrator of SAMHSA. The opinions expressed herein are the views of the speakers, and do not reflect the official position of DHHS or SAMHSA. No official support or endorsement of DHHS, SAMHSA, for the opinions described in this presentation is intended or should be inferred.

About the Series

• Purpose

- Today's session focuses on research and data exploring intersections of bullying, anti-Muslim hate, anti-Jewish hate, and more.
- Thursday's session, Part 2, focuses on incorporating bullying prevention strategies into practice and policies.

• Grounding Agreements

- Navigating the impact of faith-based bullying is complicated work.
- This conversation is centered on anti-Muslim and anti-Jewish bullying.
- We will be in listen and reflect mode.
- Expect and accept a lack of closure.

The MHTTC Network uses affirming, respectful and recovery-oriented language in all activities. That language is:

STRENGTHS-BASED AND HOPEFUL

INCLUSIVE AND ACCEPTING OF DIVERSE CULTURES, GENDERS, PERSPECTIVES, AND EXPERIENCES

HEALING-CENTERED AND TRAUMA-RESPONSIVE

INVITING TO INDIVIDUALS PARTICIPATING IN THEIR OWN JOURNEYS

PERSON-FIRST AND FREE OF LABELS

NON-JUDGMENTAL AND AVOIDING ASSUMPTIONS

RESPECTFUL, CLEAR AND UNDERSTANDABLE

CONSISTENT WITH OUR ACTIONS, POLICIES, AND PRODUCTS

La Red de los Centros de Transferencia de Tecnología sobre Salud Mental (MHTTC, por sus siglas en inglés) utiliza un lenguaje afirmativo, respetuoso y orientado a la recuperación de las personas, en todas sus actividades.

Este lenguaje es:

BASADO EN LAS FORTALEZAS Y EN LA ESPERANZA

INCLUSIVO Y DE ACEPTACIÓN A DIVERSAS CULTURAS, GÉNEROS, PERSPECTIVAS Y EXPERIENCIAS

CENTRADO EN LA SANACIÓN Y SENSIBLE AL TRAUMA

MOTIVA A QUE LAS PERSONAS DECIDAN SU CAMINO

CENTRADO EN LA PERSONA Y LIBRE DE ETIQUETAS

LIBRE DE SUPOSICIONES Y JUICIOS

RESPECTUOSO, CLARO Y COMPENSIBLE

CONSISTENTE CON NUESTRAS ACCIONES, POLÍTICAS Y PRODUCTOS

Meet Our Panelists!



Healing School Communities in the Context of Faith-Based Bullying

Session 1 Panelists



Danielle Raghib
Moderator



Dennis Barr



Nadia Ansary



Rania Awaad



Saida Abdi



Samantha Vinokor-
Meinrath



Shereen Naser



THANK
YOU

**Join us for Session 2 on
Thursday, July 25, 2024!**

– 11am-12:30pm PT / 12-
1:30pm MT / 1-2:30pm
CT / 2-3:30pm ET

Learn more from the work
of our speakers from our
[faculty CV!](#)

Access our [priming
resources document](#)

You will receive an email
within a week with access to
today's session recording
and your certificate of
attendance

Evaluation Information

The MHTTC Network is funded through SAMHSA to provide this training. As part of receiving this funding, we are required to submit data related to the quality of this event.

Please take a moment to complete a brief survey about today's training.



Stay in touch with us!

Visit our website!

www.MHTTCnetwork.org


   @MHTTCNetwork



For questions about the MHTTC Network, contact networkoffice@mhttcnetwork.org



Find Your Center

 You are visiting us from Virginia. You are located in HHS Region 3. Your Center is **Central East MHTTC**.



New England MHTTC

The Yale Program for Recovery & Community Health (PRCH)
319 Peck Street
New Haven, CT 06513

 **617.467.6014**

 **Email New England MHTTC**

HHS REGION 1
CT, ME, MA, NH, RI, VT



Northeast & Caribbean MHTTC

Rutgers School of Health Professions
Department of Psychiatric Rehabilitation
and Counseling Professions
675 Hoes Lane West, 8th Floor
Piscataway, NJ 08854

 **908-889-2430**

 **Email Northeast & Caribbean MHTTC**

HHS REGION 2
NY, NJ, PR, USVI



Central East MHTTC

Danya Institute, Inc.
8737 Colesville Road Suite L - 203
Silver Spring, MD 20910

 **240-645-1145**

 **Email Central East MHTTC**

HHS REGION 3
DE, DC, MD, PA, VA, WV

We Love What We Have

Mosab Abu Toha

We love what we have, no matter how little,
because if we don't, everything will be gone. If we don't,
we will no longer exist, since there will be nothing here for us.
What's here is something that we are still
building. It's something we cannot yet see,
because we are part
of it.

Someday soon, this building will stand on its own, while we,
we will be the trees that protect it from the fierce
wind, the trees that will give shade
to children sleeping inside or playing on swings.