



Office of School Safety and Security

2022

Shane Sexton, Safe and Supportive Schools Program Manager

Chief of Police

- Manor ISD
- Concordia University Texas

MS, Organizational Leadership and Ethics

BA, Criminal Justice

LEMIT: Leadership Command College

Master Peace Officer

Mental Health Officer

De-escalation Instructor

Workplace Violence & Threat Specialist

Human Trafficking Investigator





Remember Why You Started.

- **Highlight the origins of the Safe and Supportive Schools Program**
- **Provide an overview of the SSS division and the work currently being done**
- **Provide information and resources from our work streams: physical safety, mental health and wellness, and educator training**

- Engage and participate
- Afford colleagues and peers space to participate
- What is learned here leaves here

The Focus of Our Work

The focus of our work is to ensure that school systems use an integrated approach that promotes a safe and supportive school program (SSSP) to ensure the wellness, learning, and physical and psychological safety across the learning community.

The SSSP is a multi-tiered support system that addresses school climate, the social and emotional domain, and behavioral and mental health and wellness. It includes collaboration with community, county, and state organizations; conducting threat assessments; and implementing a multi-hazard approach to prevent, prepare for, respond to, and recover from crisis situations.

We are committed to providing information, guidance, and resources to support the implementation of the SSSP which includes a multi-tiered system of supports that address the academic and non-academic needs of students.



SB 11 Origins



FEATURED RESOURCE

ENHANCING SCHOOL SAFETY USING A THREAT ASSESSMENT MODEL

An Operational Guide for
Preventing Targeted School Violence



U.S. Department of
Homeland Security
United States
Secret Service

National Threat Assessment Center
July 2018

- More than 200,000 school students have been exposed to gun violence since the Columbine school shooting in 1999.
- 6% high school students experienced weapon related threats in school
- 800,000 crimes and/or acts of violence perpetrated against students in the United States

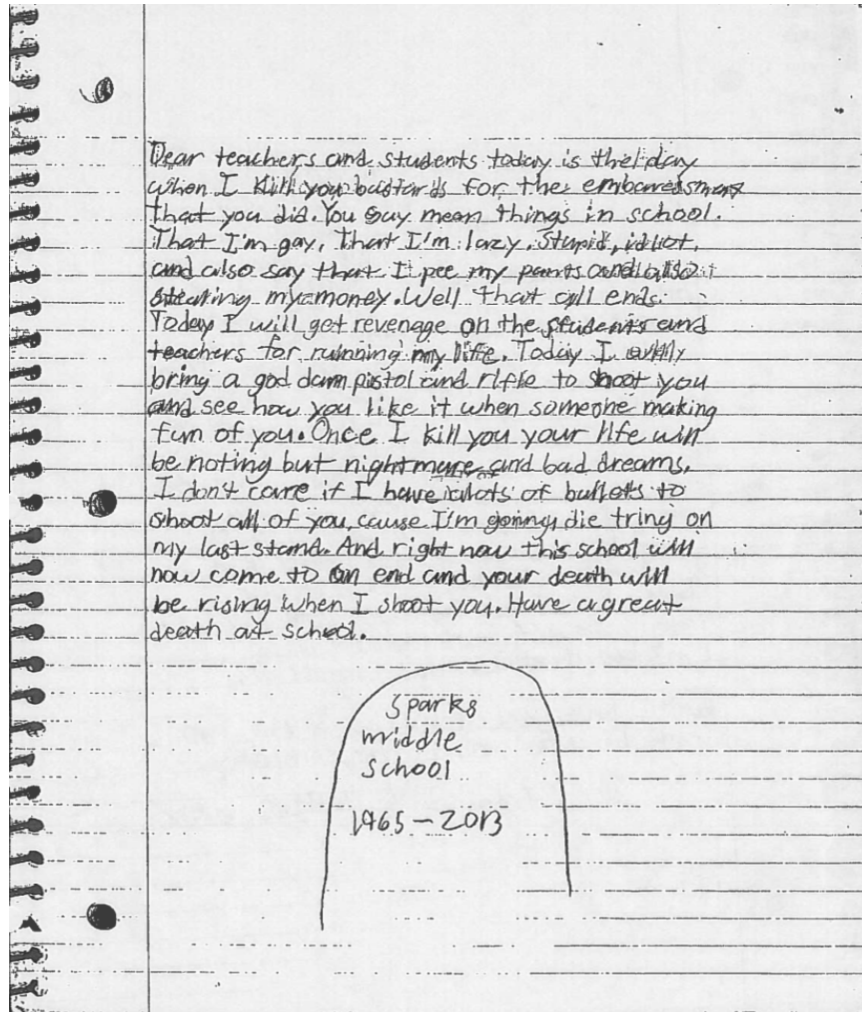
41 incidents of targeted school violence on K-12 campuses from 2008-2017

- Attackers had multiple motives, the most common being a grievance with classmates
- Half of the attackers showed an interest in violent topics
- All of the attackers experienced social stressors involving peers or romantic relationships
- Most attackers were victims of bullying, and the bullying behavior was observed by others

41 incidents of targeted school violence on K-12 campuses from 2008-2017

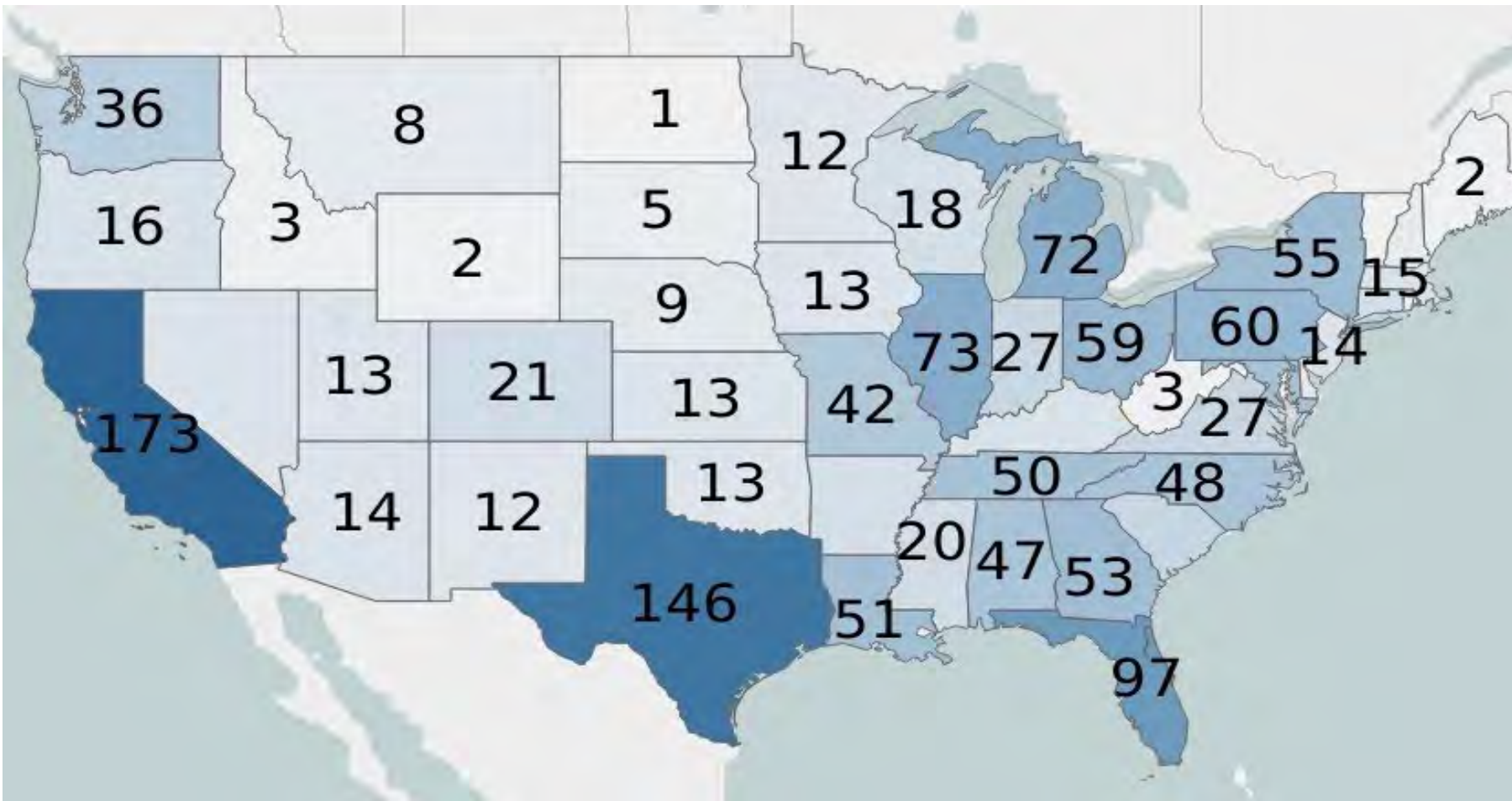
- Attackers had multiple motives, the most common being a grievance with classmates
- Half of the attackers showed an interest in violent topics
- All of the attackers experienced social stressors involving peers or romantic relationships
- Most attackers were victims of bullying, and the bullying behavior was observed by others

The next slide contains language that may be offensive to some.



“Today is the day when I kill you bastards for the embarrassment that you did. You say mean things in school. That I’m gay. That I’m lazy. Stupid, idiot, and also say that I pee my pants and also stealing my money. Well that all ends today.”

U.S. School Shootings 1970 - 2018



- California - 173
- Texas - 146
- Florida - 97
- Illinois - 73
- New York - 55

How big is the problem?

- About 1 in 5 high school students reported being bullied on school property in the last year.
- 8% of high school students had been in a physical fight on school property one or more times during the 12 months before the survey.
- More than 7% of high school students had been threatened or injured with a weapon (for example, a gun, knife, or club) on school property one or more times during the 12 months before the survey.
- Almost 9% of high school students had not gone to school at least 1 day during the 30 days before the survey because they felt they would be unsafe at school or on their way to or from school.

Improving School Safety in Texas



Governor Greg Abbott
August 27, 2019

Making it safe to learn:

- Positive School Climates
- Multi-tiered System of Support (MTSS)
- Behavioral Threat Assessments
- Staff Training
- Continuous Improvement
- Emergency Management

Disconnected Efforts

**School
Mental and
Behavioral
Health**

**School Safety
and Security**

**Academics and
Learning
Supports**

Connection of Efforts



Increased coordination among school safety stakeholders



Increased data collection to drive continuous improvement



Increased support for and coordination within campuses resulting from the Safe and Supportive School Program



Safe and Supportive School Program

Ensuring Physical and Psychological Safety



To ensure wellness, learning and physical and psychological safety across the learning community, an integrated approach is essential within a safe and supportive school program.

A safe and supportive school program is a systemic and **coordinated multitiered support system** that addresses **school climate**, the **social and emotional domain**, and **behavioral and mental health and wellness**; it includes **collaboration with** (community or external) **organizations**; conducting **behavioral threat assessments** and the implementation of a **multi-hazard approach to prevent, prepare, respond, and recover** from crisis situations.

Safe and Supportive Schools Program Teams

Each team shall:



(1) conduct a threat assessment that includes:

(A) assessing and reporting individuals who make threats of violence or exhibit harmful, threatening, or violent behavior in accordance with the policies and procedures adopted under Subsection (c); and

(B) gathering and analyzing data to determine the level of risk and appropriate intervention, including:

(i) referring a student for mental health assessment; and

(ii) implementing an escalation procedure, if appropriate based on the team's assessment, in accordance with district policy;

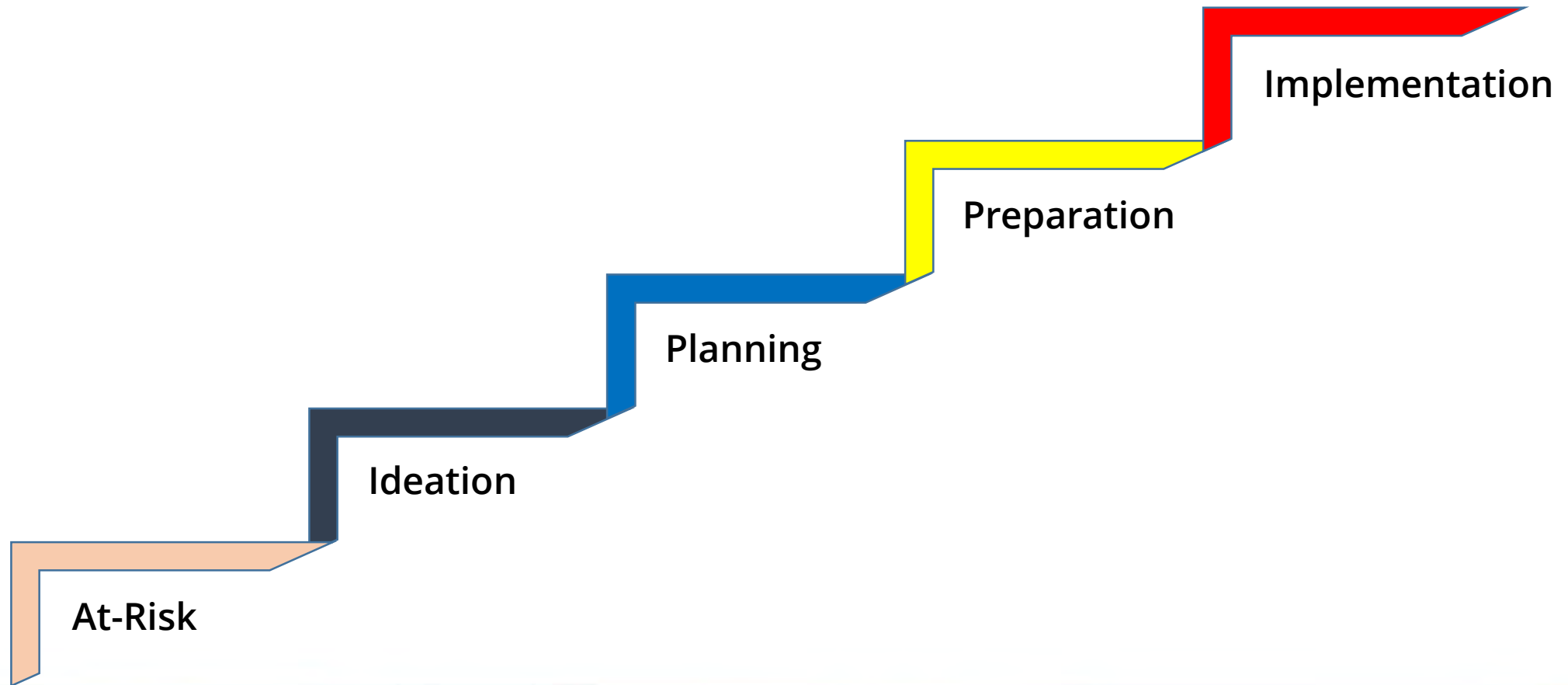


(2) provide guidance to students and school employees on recognizing harmful, threatening, or violent behavior that may pose a threat to the community, school, or individual; and



(3) support the district in implementing the district's multihazard emergency operations plan.

Pathway to Violence






School Mental Health

About School Mental Health

Mental health includes our emotional, psychological, and social wellbeing. It affects how we think, feel, and act. It also helps determine how we handle stress, relate to others, and make healthy choices. Mental health is important at every stage of life, from childhood and adolescence through adulthood. Mental health is equally as important as physical health. (Centers for Disease Control and Prevention, 2020)

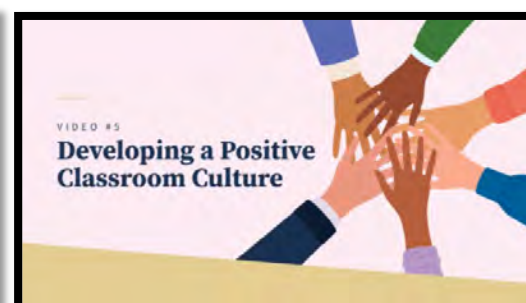
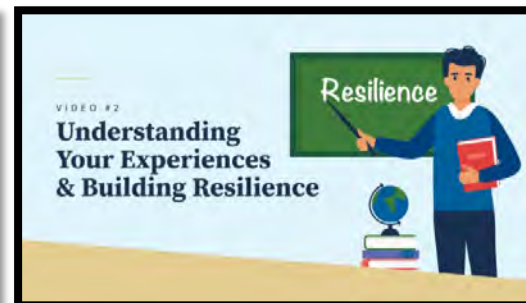
About School Mental Health



School mental health (SMH) encompasses a continuum of policies, procedures, and practices that ultimately promotes the social, emotional, and behavioral development and wellbeing of students to support their learning and success in school and life.

Trauma-Informed Training Series

- Understanding Trauma & Its Impact
- Understanding Your Experience & Building Resilience
- Understanding Your Student's Experiences
- Building Secure Relationships
- Developing a Positive Classroom Culture
- Building Strong Partnerships with Students' Families



texasprojectrestore.org

- 1 Increase and improve access** to culturally competent and developmentally appropriate school and community-based mental health services.
- 2 Increase awareness and identification** of mental health issues among adults working with young people.
- 3 Help students develop skills** that promote resilience, self-regulation and pro-social behaviors, avert development of mental health disorders and prevent youth violence.
- 4 Develop an infrastructure** that will sustain services at LEA/ESC's and *build statewide capacity for promoting mental health awareness, wellness, and evidenced-based practices.*



Statewide Plan for Student Mental Health

Senate Bill 11

December 2020



Access Reports: <https://schoolmentalhealthtx.org/>

TEC 38.354 and TEC 38.301-312 (86R)

The Collaborative Task Force on Public
School Mental Health Services

Year 1 Report

November 2, 2020

NEW! School Mental Health Resources and Tools: 2021-2022

1

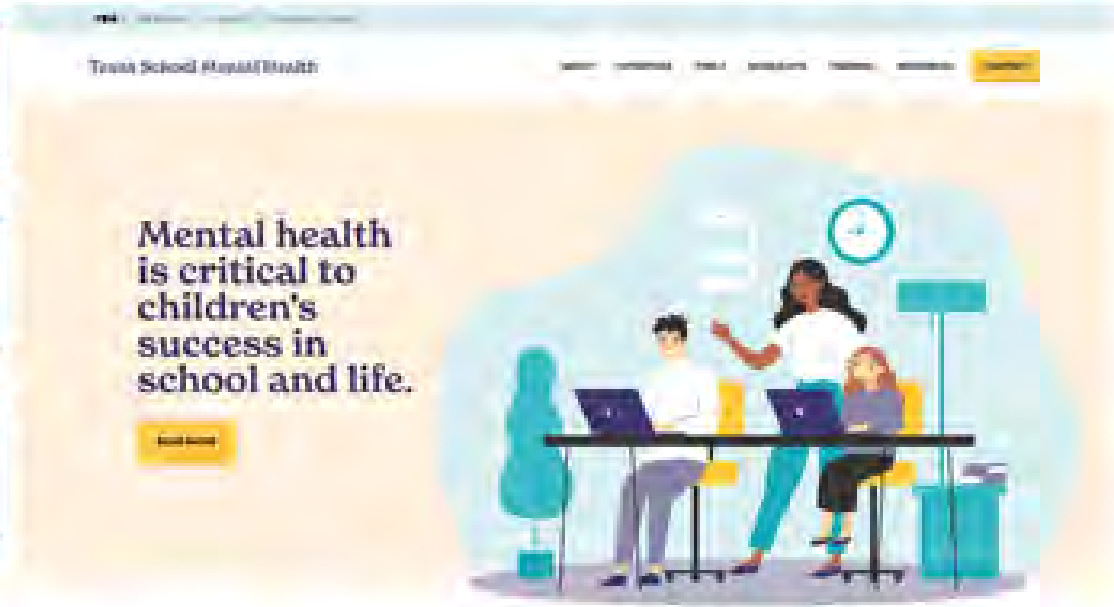
- School Mental Health Practice Guide and Toolkit

2

- Texas School Mental Health Website
<https://schoolmentalhealthtx.org/>

3

- Safe and Supportive Schools Program MTSS for Mental Health Learning Modules – Coming Soon!



Informing resources and advancing wellness and resiliency in education through collaborative efforts, including:



Advancing Wellness and Resiliency in Education



tcmhcc

CCNETWORK
Comprehensive Center Network

State of
Additional
Resources
Texas



- The Texas Health and Human Services Commission
- The Texas School Safety Center
- Texas Suicide Prevention Council and Coalition

- The Collaborative Task Force on School Mental Health Supports
- Texas System of Care, Community Resource Coordination Groups
- ESC Mental Health Professional Learning Community and Network



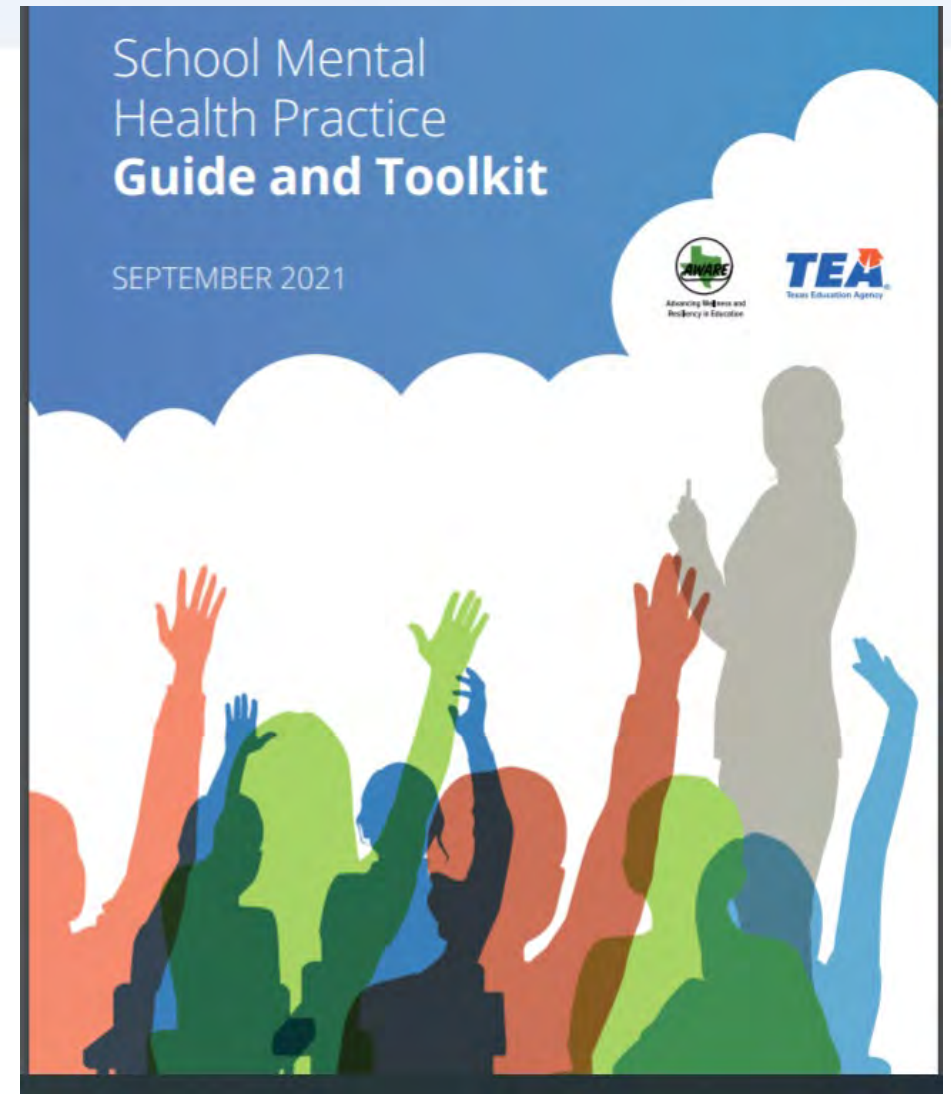
School Mental Health Website

Toolkit

The Texas School Mental Health Practice Guide and Toolkit provides information, considerations, resources, and tools for schools. The purpose is to help Local Education Agencies plan and provide a comprehensive school mental health system. This toolkit supports schools with readiness to plan interventions, services and supports for the Safe and Supportive School Program. Various resources and tools can be accessed in the toolkit library.

[DOWNLOAD THE TOOLKIT](#)

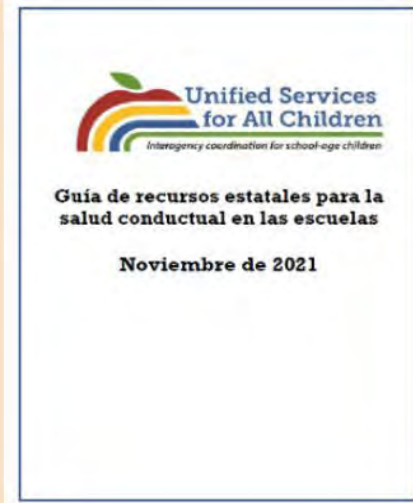
<https://schoolmentalhealthtx.org/>



Texas School Mental Health Website

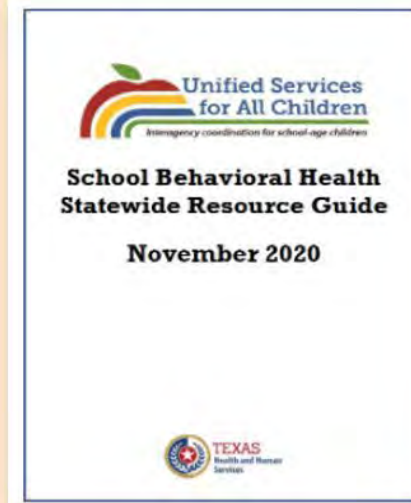
FILTER BY CATEGORY

- Assessing Fidelity and Quality (4)
- Community-based Resources (10)
- Consent and Referral Forms (6)
- Resiliency and Trauma-Informed Schools (3)
- School Climate (2)
- Screening and Needs Identification (8)
- Student Support and Care Management Tools (10)
- Suicide Prevention (3)
- Systems Planning Tools (9)



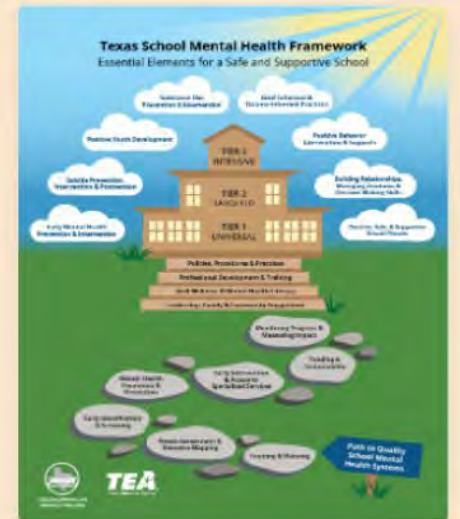
COMMUNITY-BASED RESOURCES

USAC School Behavioral Health Statewide Resource Guide Spanish



COMMUNITY-BASED RESOURCES

USAC School Behavioral Health Statewide Resource Guide



SYSTEMS PLANNING TOOLS

Texas School Mental Health Framework

This handout provides a

School Mental Health Practice Guide and Toolkit

School Mental Health Practice Guide and Toolkit

SEPTEMBER 2021



Advancing Wellness and Resilience in Schools



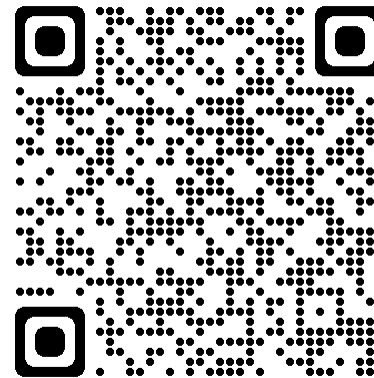
Texas Education Agency



School Mental Health Practice Guide and Toolkit

Contents

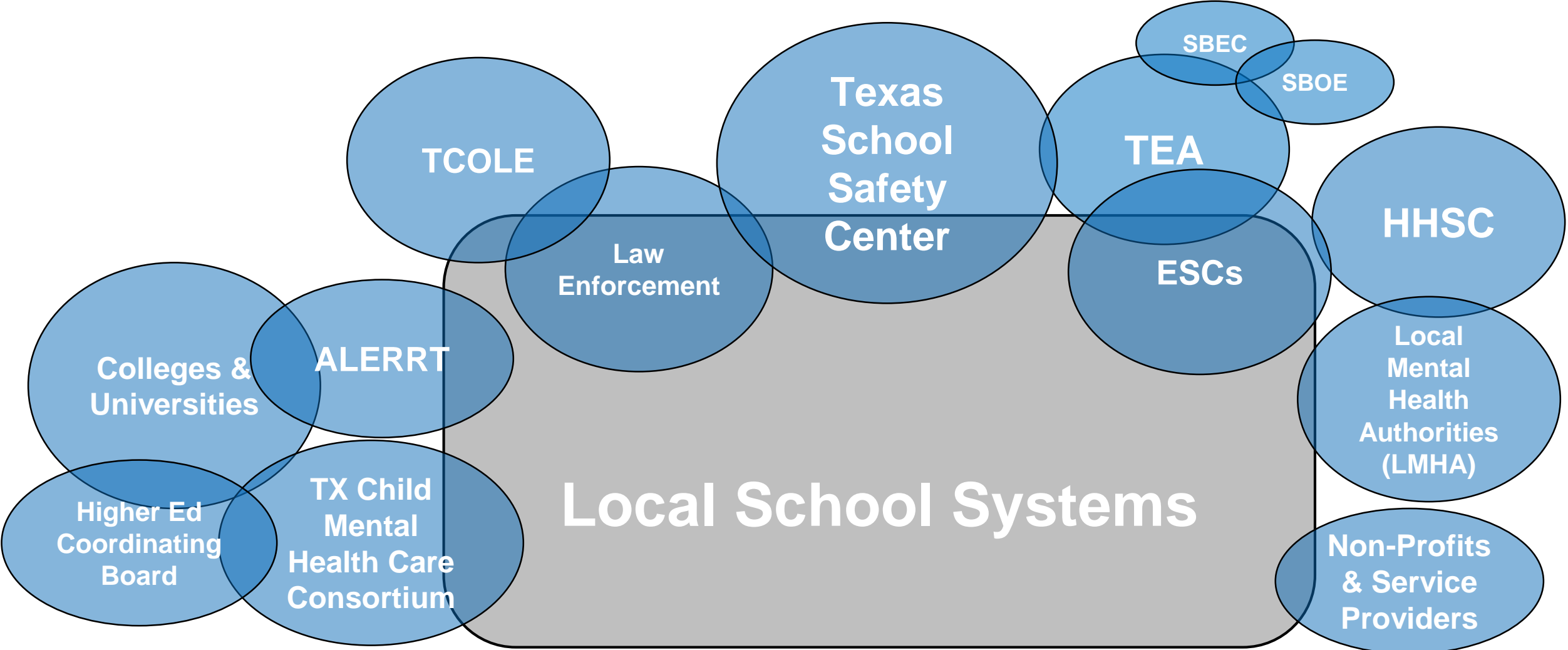
1 Introduction: What Is School Mental Health?	1
2 Why Does School Mental Health Matter?	2
3 What Are the Benefits of School Mental Health?	5
4 How Does School Mental Health Meet TEA Strategic Priorities?	7
5 What Are the Highlights of Texas Legislation on School Mental Health?	9
6 What Are the Foundational Components of School Mental Health in Texas?	12
7 How Does School Mental Health Support the Safe and Supportive Schools Program?	15
8 How Does My LEA Start Building a Comprehensive School Mental Health System?	24
9 What Guidance Is Available for State-Required School Mental Health Practices, Procedures, and Training?	28
10 Where Can I Learn More about School Mental Health Components, Tools, and Resources?	32
11 How Do I Access TEA School Mental Health Tools in the Toolkit?	43
12 Acknowledgments	44
13 Tools and Resources	46





What's Next?

The K-12 School Safety Eco-System: Key Components



Facilitate an open and honest dialogue related to needs, challenges and opportunities to make schools safer for students to learn, grow and play.

We don't know what we don't know.

And.... we won't know unless you share.

Next Two Months - Learn, Learn, Learn

Traveling over the next several months to Listen, Learn, and:



Visit several ESC's, serving LEA's of various sizes, across the state



Walk campuses and learning from district and campus leadership



Listen to the concerns of campus staff



Observe strong and struggling systems related to school safety

**Don't forget that, maybe
you are the lighthouse
in someone else's storm!**





Questions

shane.sexton@tea.texas.gov